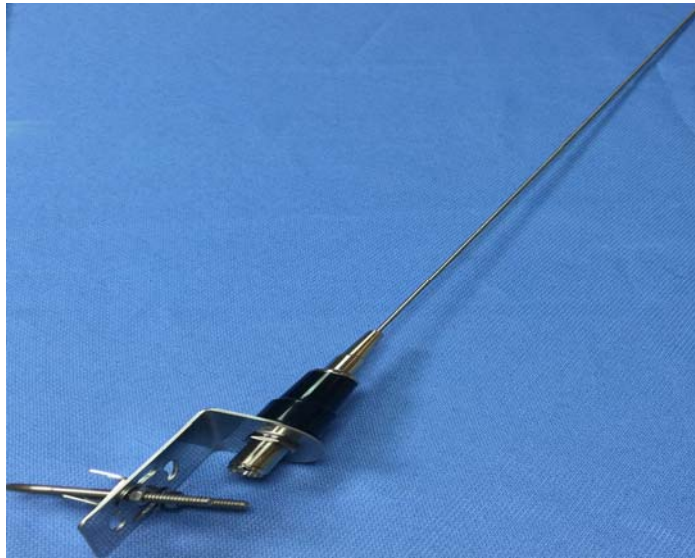


SUS WHIP VHF ANTENNA

Model : MV-160



1. GENERAL DESCRIPTION

P/N
MV-160-PL259(F)

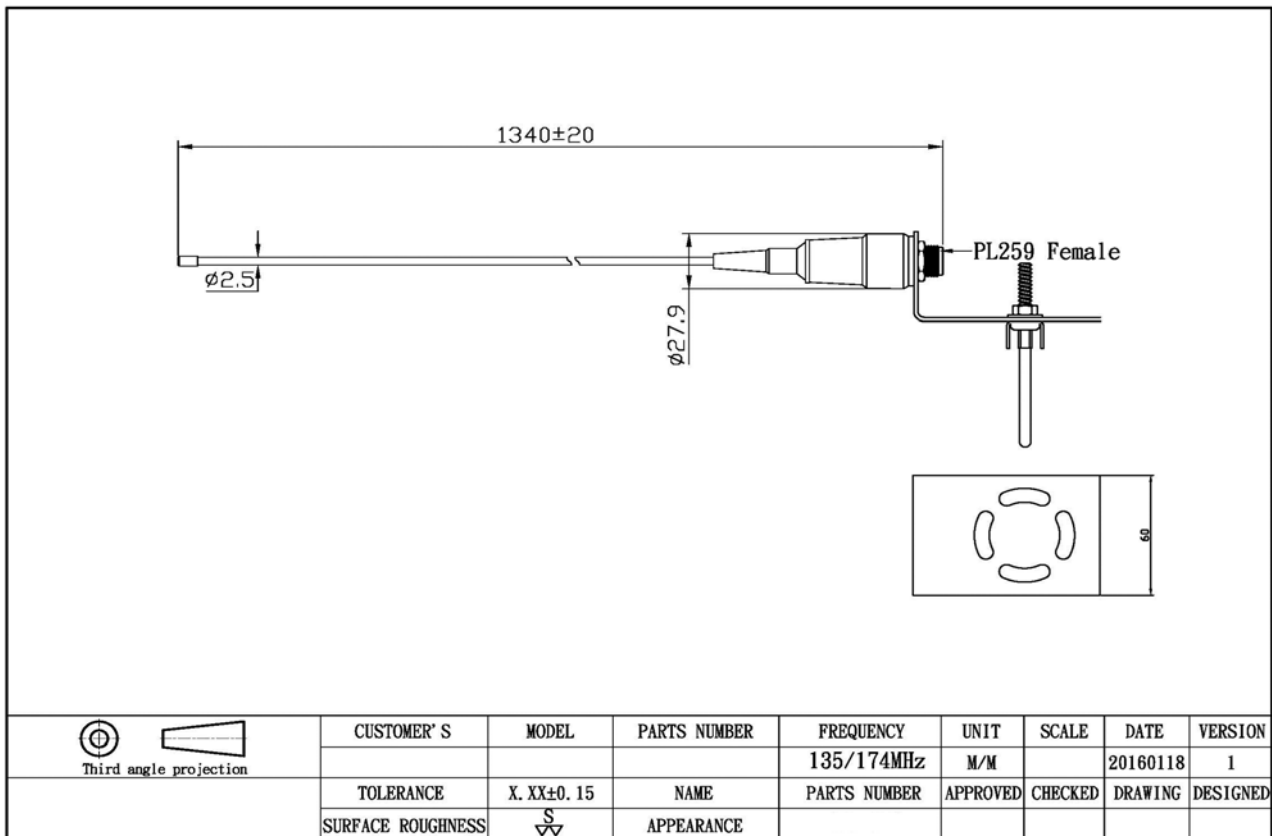
1.1 Electrical Properties

Parameter	Description
Frequency Band	135~174MHz
Nominal Impedance	50 ohm
Polarization	Vertical
V.S.W.R	2.0:1

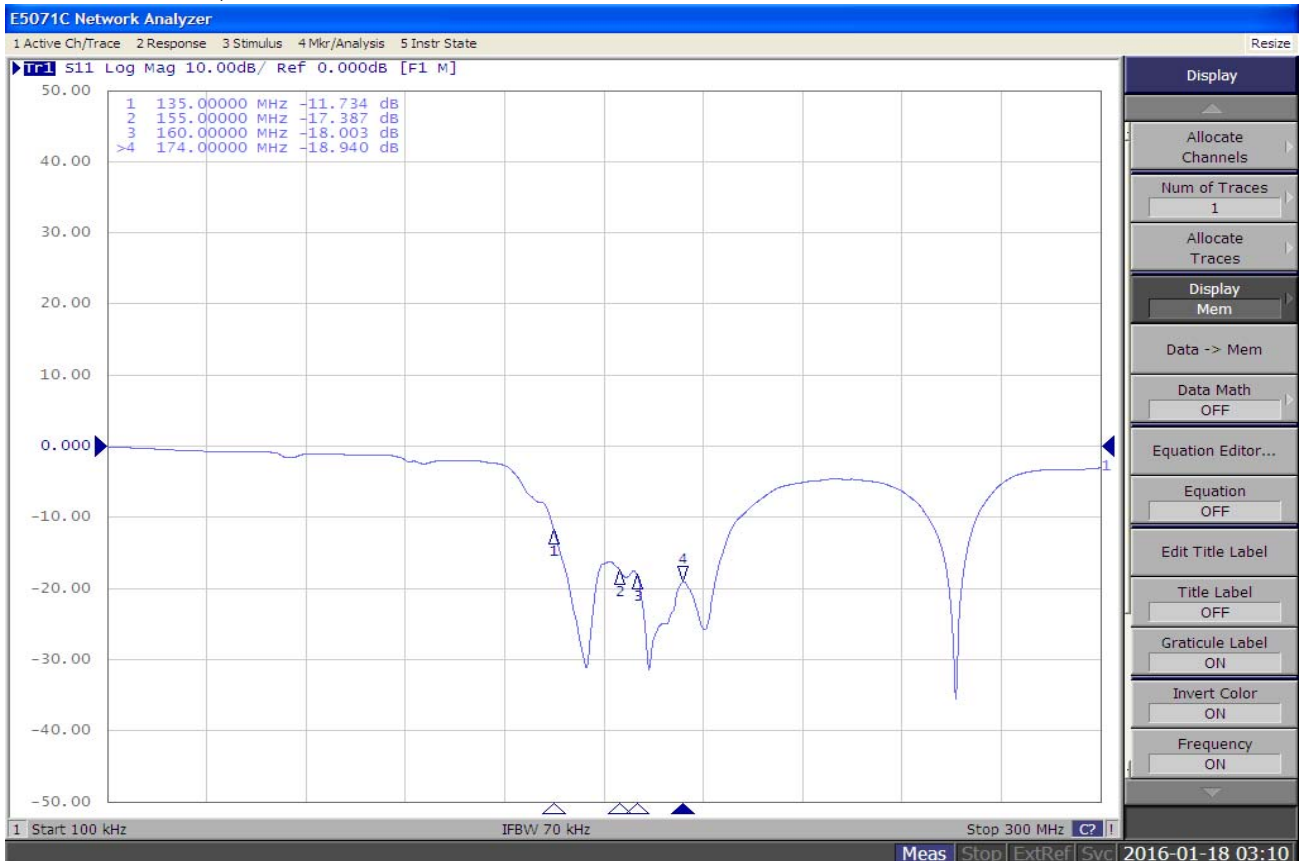
1.2 Mechanical Properties

Parameter	Description
Antenna Type	External Antenna
Touch Type	Screw Type
Connector Type	PL 259 (Female)
Antenna Dimensions	1340 mm \pm 20
Operating Temperature Range	-40°C~+80°C
Storage Temperature Range	-40°C~+80°C

2. APPEARANCE:



3. Return Loss, V.S.W.R. and Smith Chart

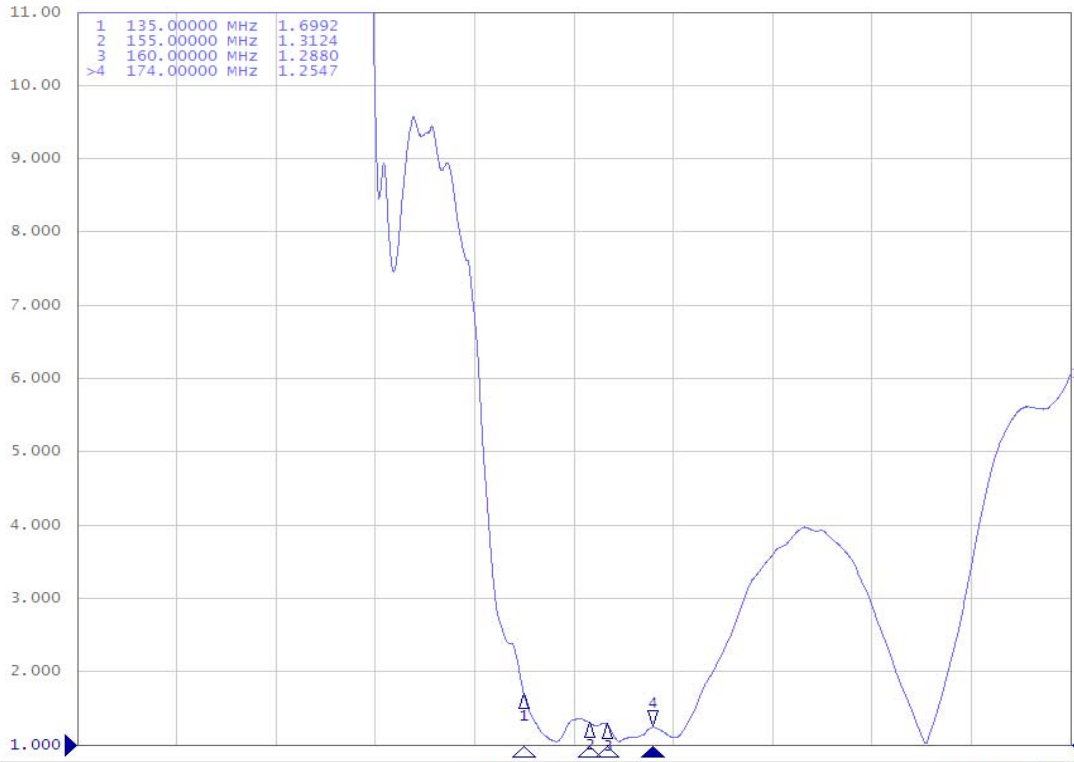


E5071C Network Analyzer

1 Active Ch/Trace 2 Response 3 Stimulus 4 Mkr/Analysis 5 Instr State

Resize

► **Tr1** S11 SWR 1.000/ Ref 1.000 [F1 M]



1 Start 100 kHz

IFBW 70 kHz

Stop 300 MHz C?

Meas Stop ExtRef Svc 2016-01-18 03:11

Format

SWR

Log Mag

Phase

Group Delay

Smith

Polar

Lin Mag

SWR

Real

Imaginary

Expand Phase

Positive Phase

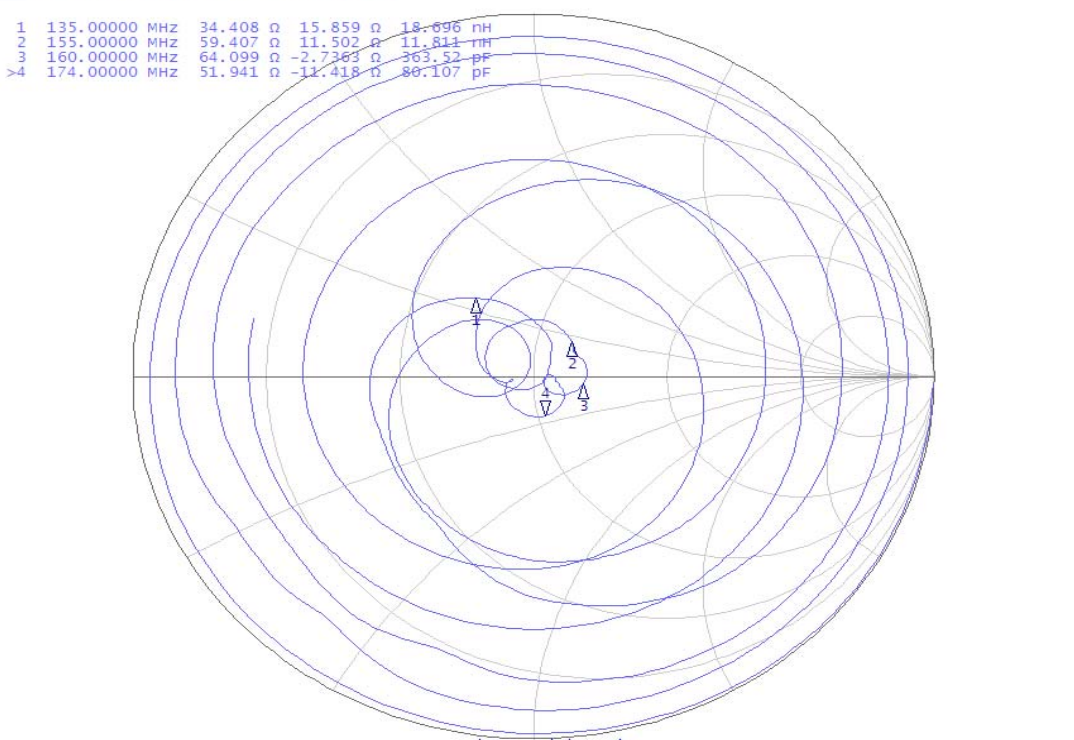
Return

E5071C Network Analyzer

1 Active Ch/Trace 2 Response 3 Stimulus 4 Mkr/Analysis 5 Instr State

Resize

► **Tr1** S11 Smith (R+jX) Scale 1.000U [F1 M]



1 Start 100 kHz

IFBW 70 kHz

Stop 300 MHz C?

Meas Stop ExtRef Svc 2016-01-18 03:11

Format

Smith (R+jX)

Log Mag

Phase

Group Delay

Smith

R + jX

Polar

Lin Mag

SWR

Real

Imaginary

Expand Phase

Positive Phase

Return