

# CAR LTE / GPS Passive Antenna

## MODEL: TC-821B

Inside Glass Antenna for JP LTE 815~875 & 1575 MHz



### 1. GENERAL DESCRIPTION

Model No	P/N
	TC-821B-3M-SMA(M)

Below is a table summarizing the antenna design specification.

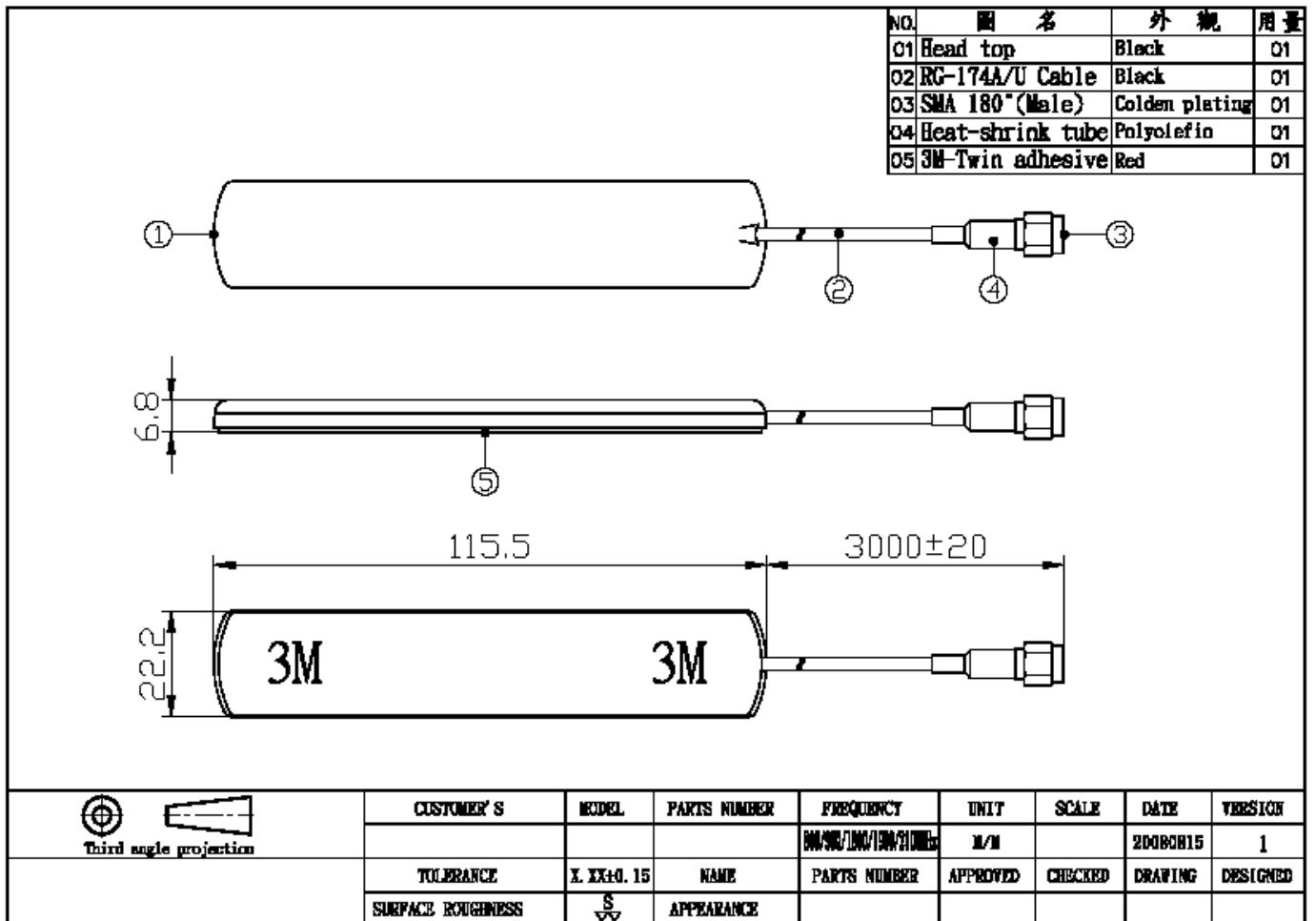
#### 1.1 Electrical Properties

Parameter	Description
Frequency Band	815~875 & 1575MHz RX : 860.0MHz ~ 875.0MHz TX : 815.0MHz~ 830.0MHz
Nominal Impedance	50 ohm
Polarization	Vertical
Electrical Wave	Dipole
V.S.W.R	2.0:1
Antenna Peak Gain	0dBi
Note: Gain includes the cable loss	

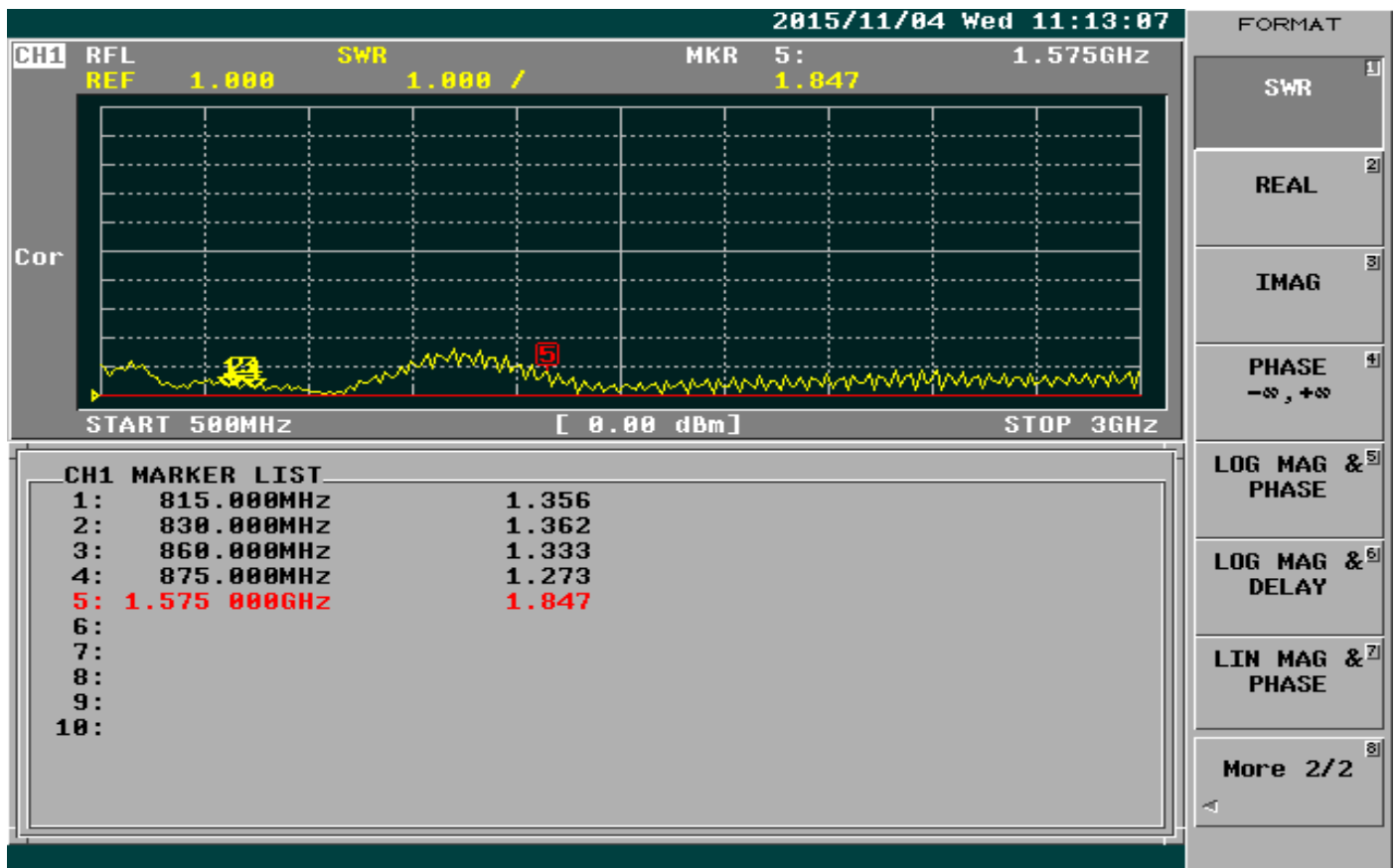
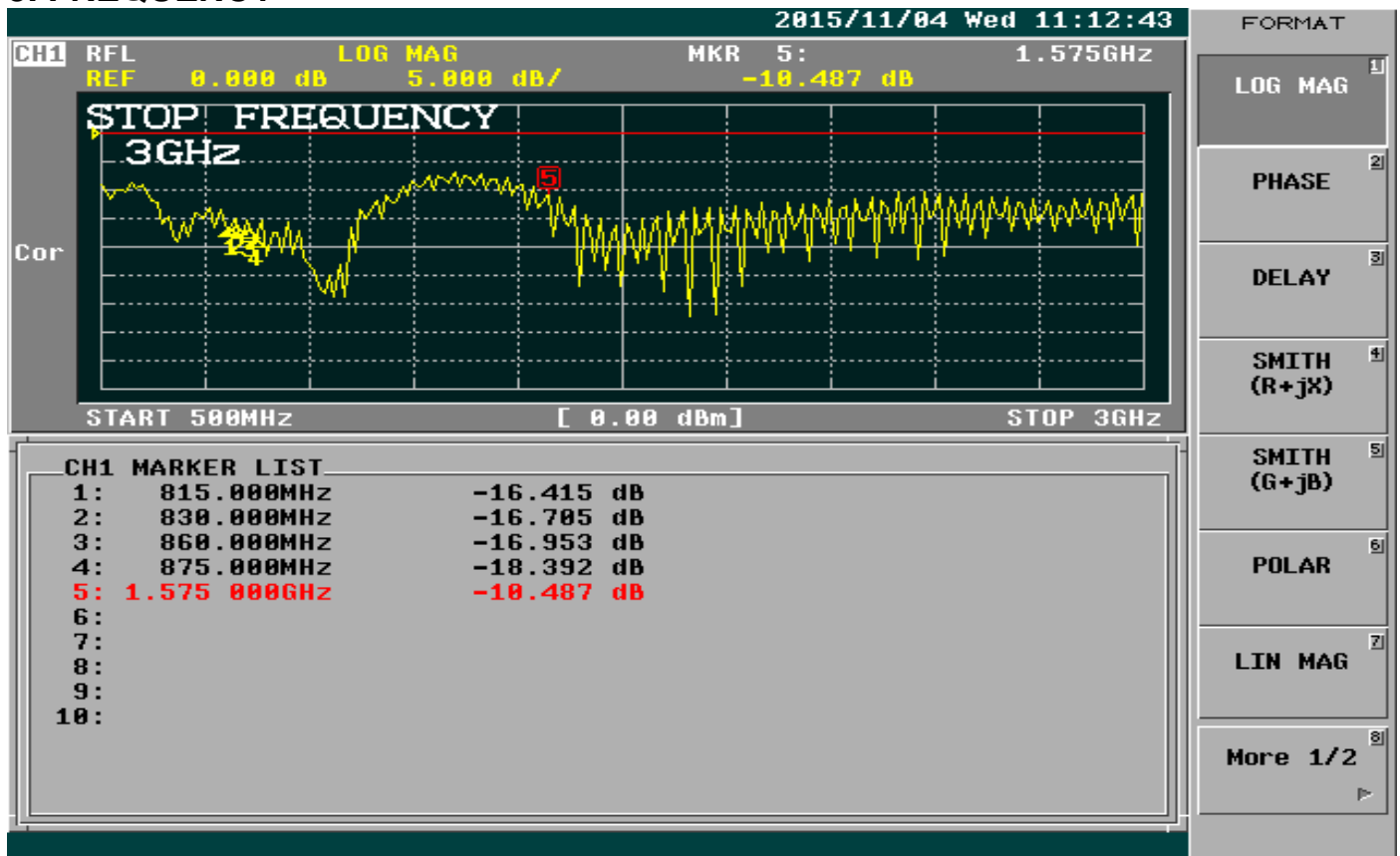
#### 1.2 Mechanical Properties

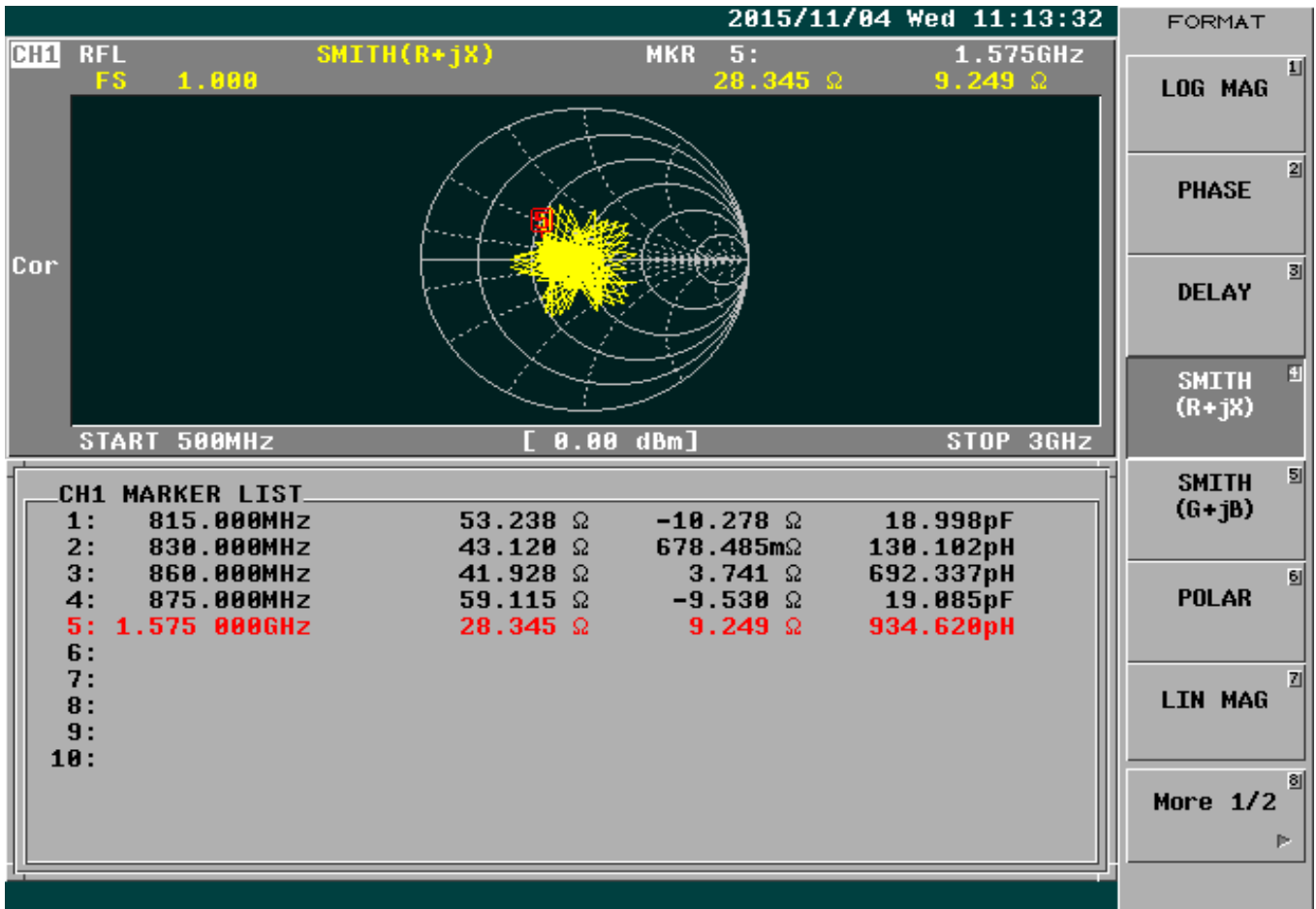
Parameter	Description
Antenna Material	ASA
Connector Type	SMA 180° male
Antenna Dimensions	115 mm ± 5
Antenna Cable Total Length	3000mm ± 20
Antenna Color	Black
Operating Temperature Range	-40°C~+80°C
Storage Temperature Range	-40°C~+80°C

## 2.Appearance



### 3. FREQUENCY





Test result:

Frequency (MHz)	815	830	860	875	1575
Average Gain (dB)	-4.43	-3.75	-3.8	-4.03	-6.53
Peak Gain (dBi)	0.23	1.03	1.16	0.71	-1.2
Efficiency (%)	36.0	42.0	41.68	39.47	22.21

