

Outdoor LTE/WIFI MIMO Antenna

MODEL: LW-68



1.. GENERAL DESCRIPTION

Model No	P/N
LW-68	LW-68-61CM-SMA(M)

Below is a table summarizing the antenna design specification.

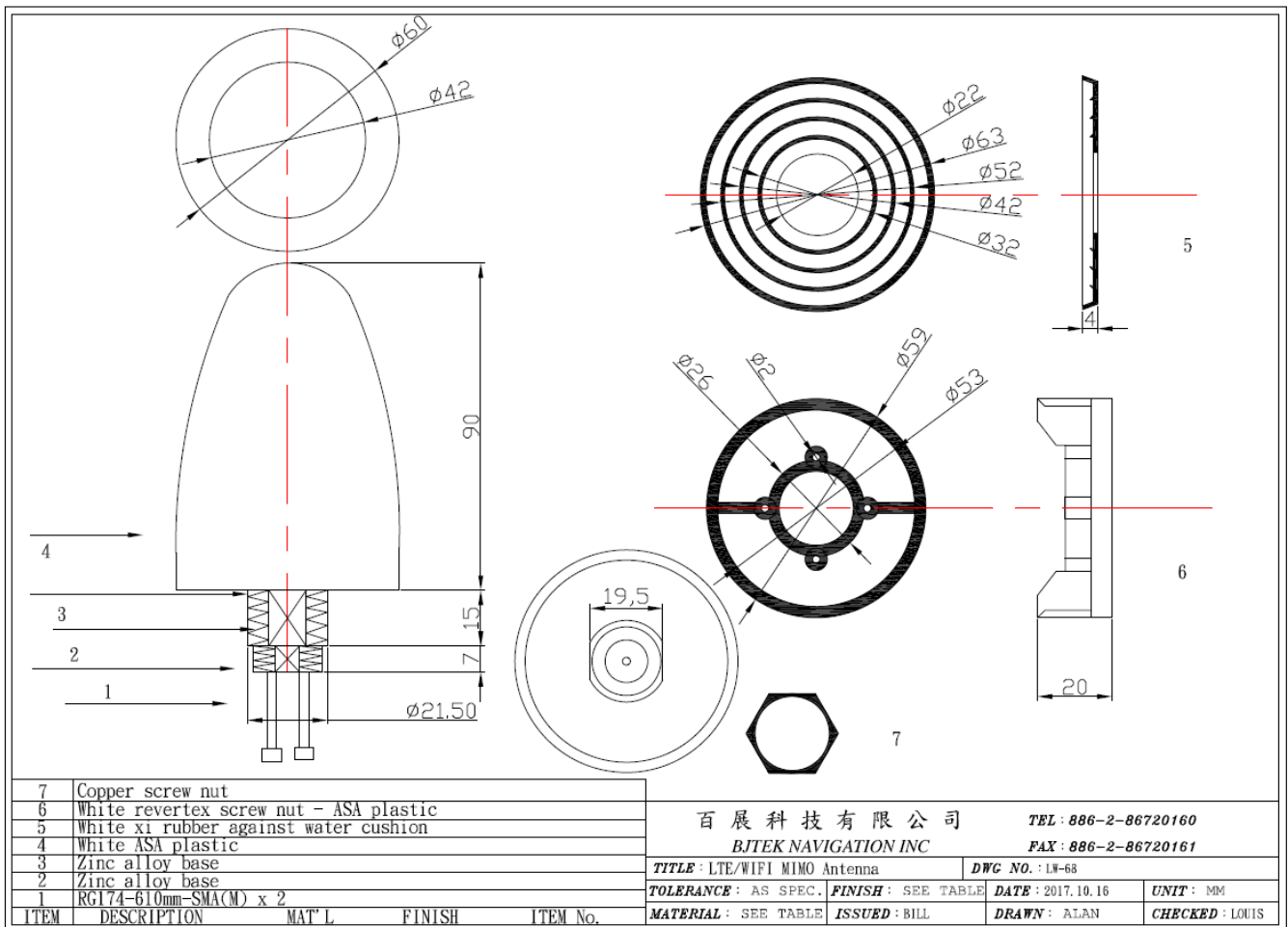
1.1 Electrical Properties

Parameter	Description
Frequency Band	Cable 1: 698~960/1710~2690Mhz Cable 2 : 2.4~2.5/5.1~5.85Ghz
Nominal Impedance	50 ohm
Polarization	Vertical
Admitted Power radiation	5W
V.S.W.R	3.5:1
Antenna Peak Gain	0~3db
Note: Gain includes the cable loss	

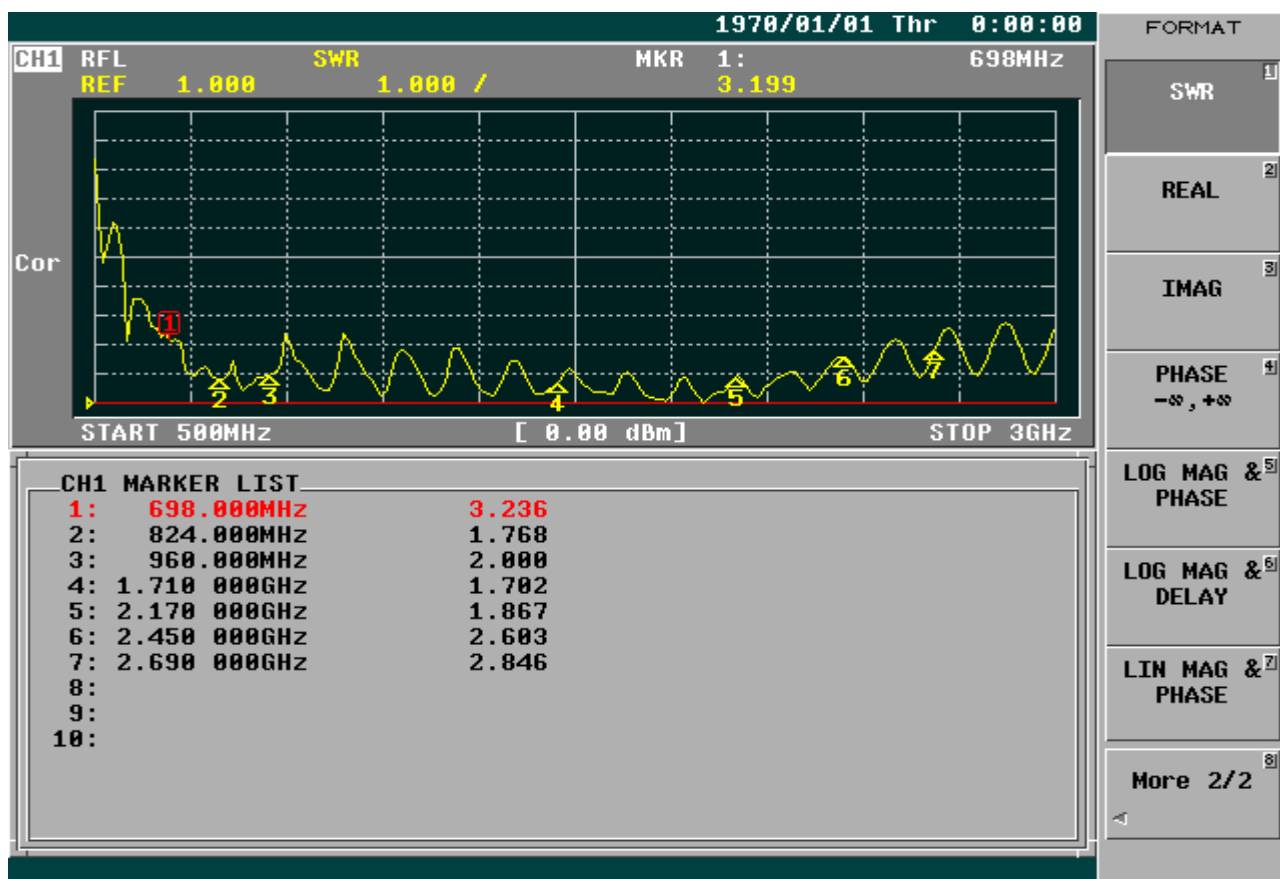
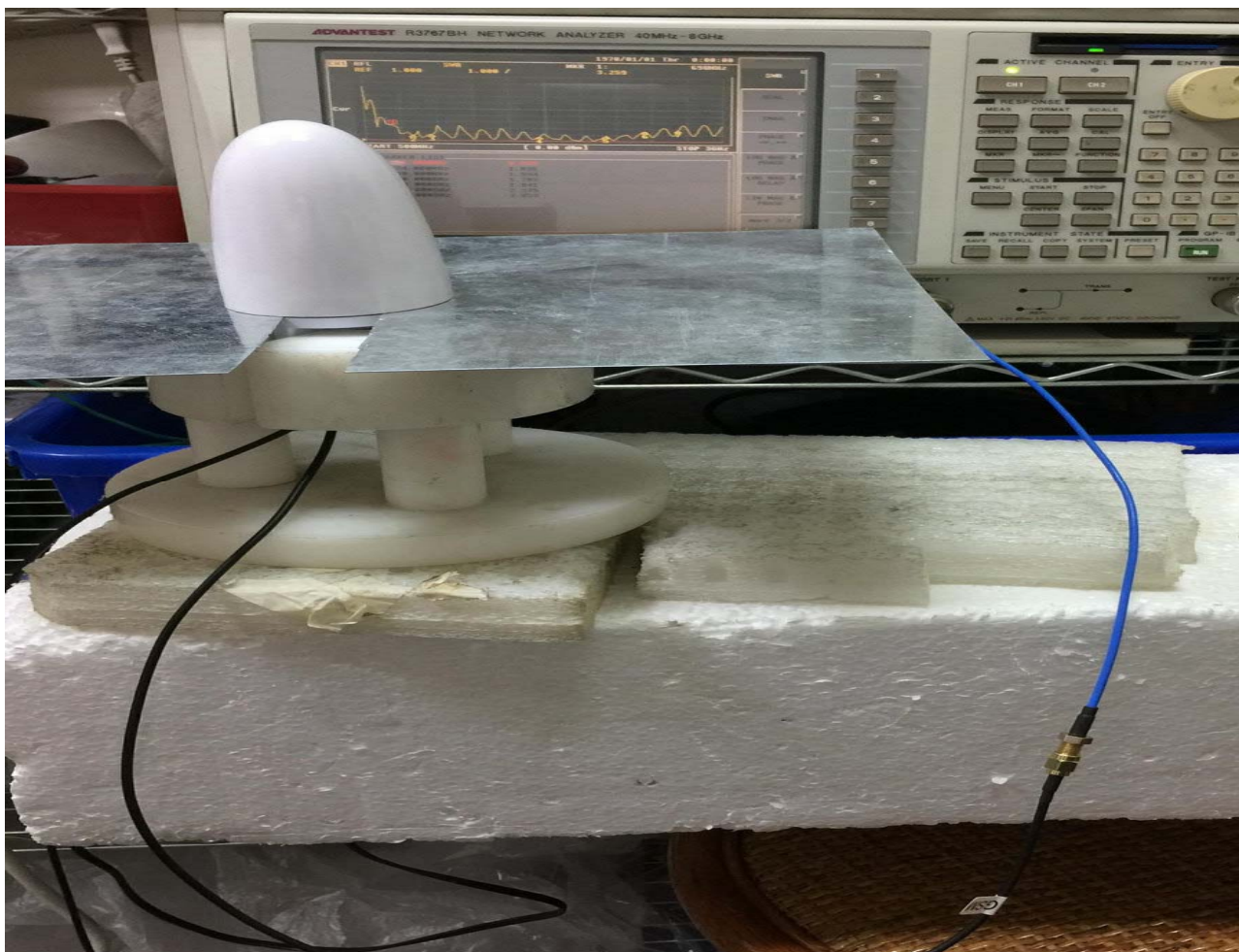
1.2 Mechanical Properties

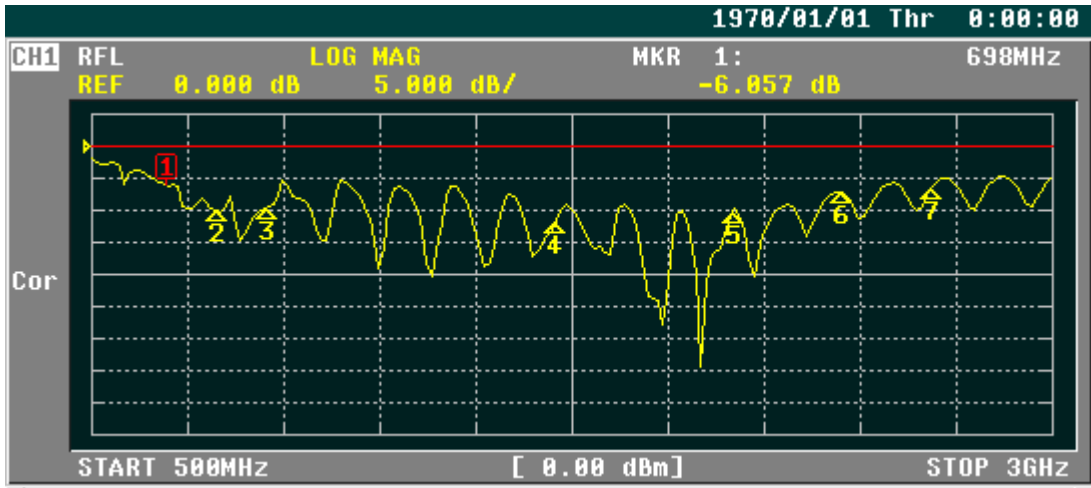
Parameter	Description
Antenna Type	External Antenna

Material	ASA-UV
Touch Type	Screw Type
Cable & Connector	RG174-610mm-SMA (M) x 2
Antenna Dimensions	60mm(Dia.) x 90mm(H)
Mounting	FB6 SUS L-Mounting (optional)
Antenna Color	White
Operating Temperature Range	-40°C~+80°C
Storage Temperature Range	-40°C~+80°C
Waterproof	IPX7



LTE/3G Test : ON 320x240 GND





CH1 MARKER LIST

1:	698.000MHz	-6.103 dB
2:	824.000MHz	-9.952 dB
3:	960.000MHz	-9.487 dB
4:	1.710 000GHz	-11.897 dB
5:	2.170 000GHz	-10.251 dB
6:	2.450 000GHz	-7.041 dB
7:	2.690 000GHz	-6.400 dB
8:		
9:		
10:		

FORMAT

LOG MAG 1

PHASE 2

DELAY 3

SMITH (R+jX) 4

SMITH (G+jB) 5

POLAR 6

LIN MAG 7

More 1/2 8



CH1 MARKER LIST

1:	698.000MHz	73.737 Ω	-65.036 Ω	3.505pF
2:	824.000MHz	84.044 Ω	-26.819 Ω	7.201pF
3:	960.000MHz	80.138 Ω	-31.521 Ω	5.259pF
4:	1.710 000GHz	31.740 Ω	6.367 Ω	592.666pH
5:	2.170 000GHz	57.740 Ω	-32.858 Ω	2.232pF
6:	2.450 000GHz	31.107 Ω	-34.136 Ω	1.903pF
7:	2.690 000GHz	101.235 Ω	-56.895 Ω	1.039pF
8:				
9:				
10:				

FORMAT

LOG MAG 1

PHASE 2

DELAY 3

SMITH (R+jX) 4

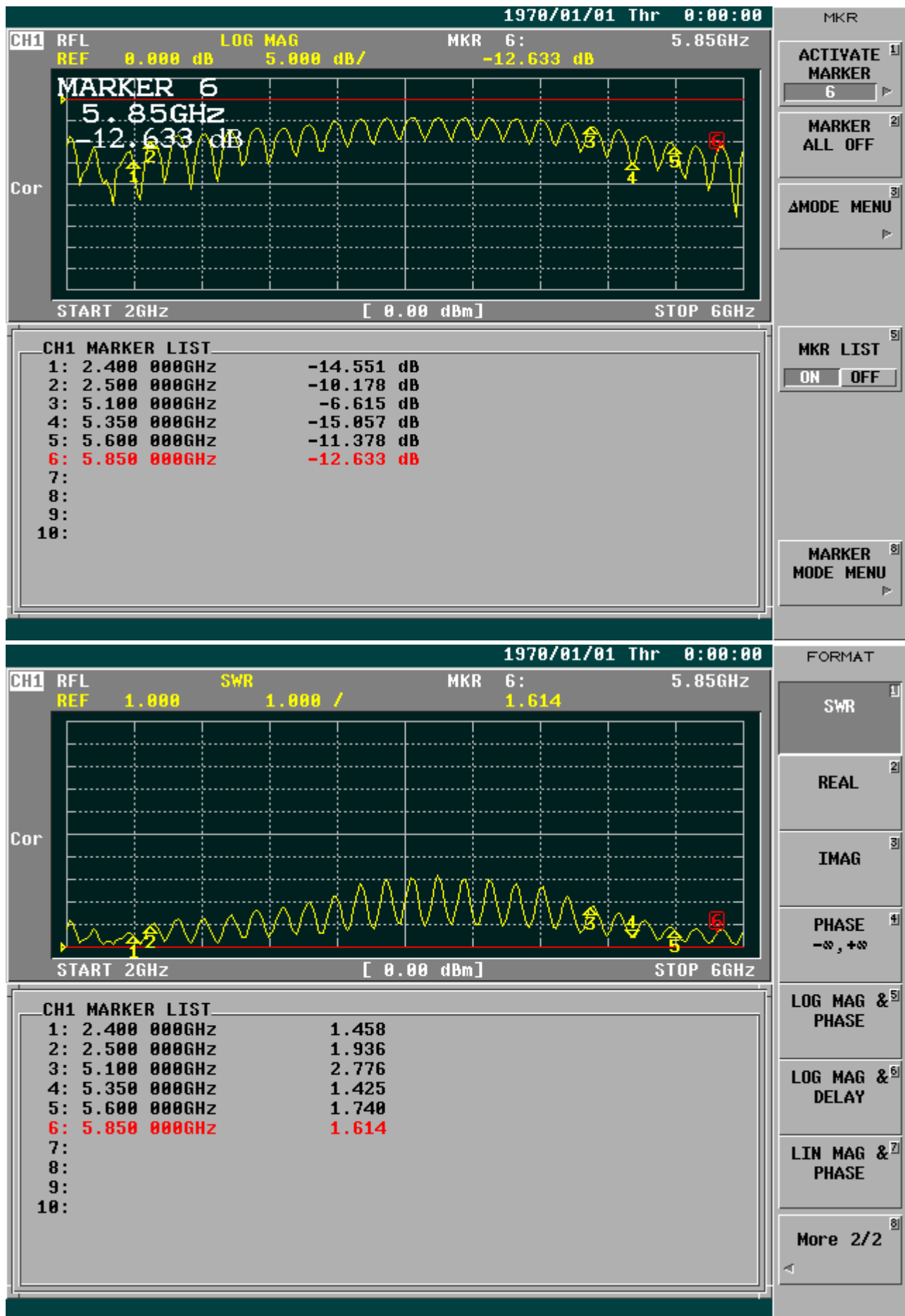
SMITH (G+jB) 5

POLAR 6

LIN MAG 7

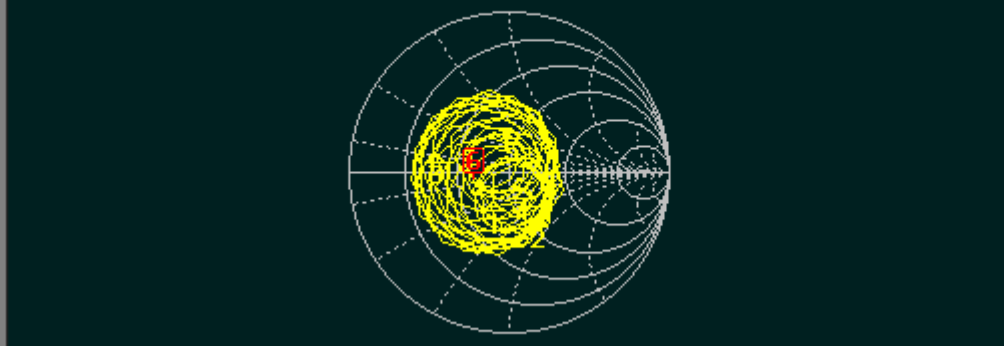
More 1/2 8

WIFI Test : ON 320x240 GND



CH1 RFL SMITH(R+jX) MKR 6: 5.85GHz
 FS 1.000 31.609 Ω -2.018 Ω

Cor



START 2GHz [0.00 dBm] STOP 6GHz

CH1 MARKER LIST

1:	2.400 000GHz	38.671 Ω	-13.016 Ω	5.094pF
2:	2.500 000GHz	58.762 Ω	-35.617 Ω	1.787pF
3:	5.100 000GHz	18.233 Ω	5.791 Ω	180.720pH
4:	5.350 000GHz	58.083 Ω	-12.523 Ω	2.375pF
5:	5.600 000GHz	44.256 Ω	25.924 Ω	736.800pH
6:	5.850 000GHz	31.609 Ω	-2.018 Ω	13.477pF
7:				
8:				
9:				
10:				

FORMAT

LOG MAG

PHASE

DELAY

SMITH (R+jX)

SMITH (G+jB)

POLAR

LIN MAG

More 1/2