

1.2Ghz Bendable Antenna

MODEL: TH-1200B



1. GENERAL DESCRIPTION

Model No	P/N
TH-1200B	TH1200B-SMA(M)

Below is a table summarizing the antenna design specification.

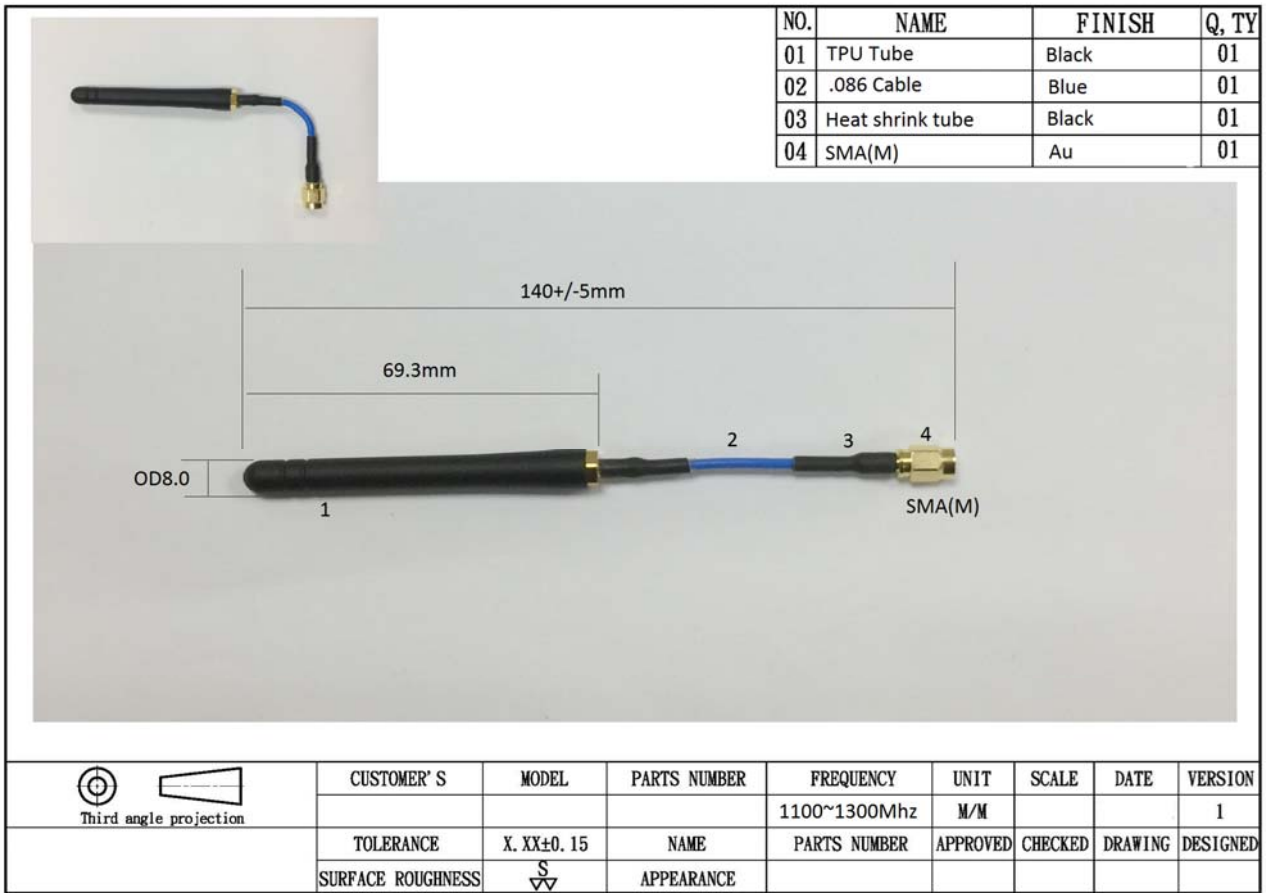
1.1 Electrical Properties

Parameter	Description
Frequency Band	1100~1300 MHz (1200Mhz)
Nominal Impedance	50 ohm
Polarization	Vertical
Electrical Wave	Dipole
Return Loss	Please See Data-1
V.S.W.R	2.0 : 1
Gain	0db

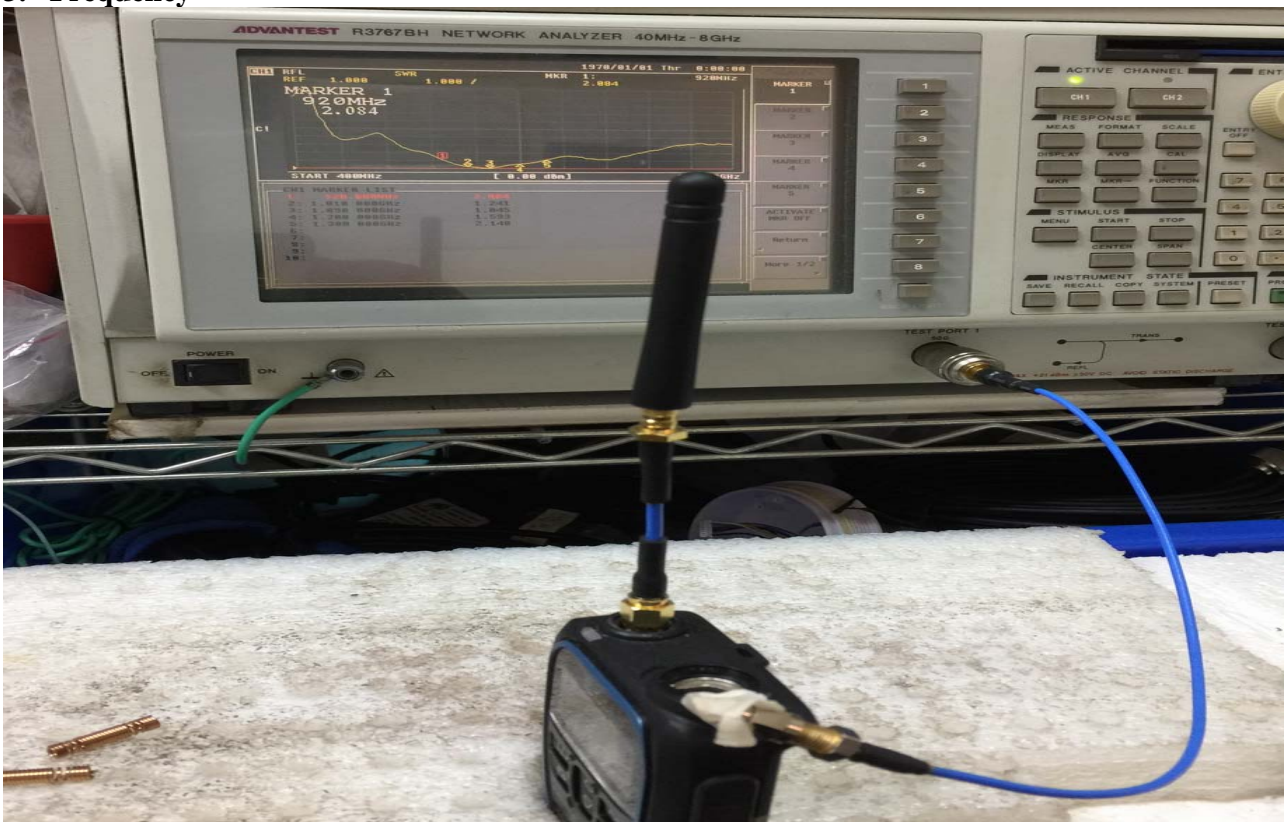
1.2 Mechanical Properties

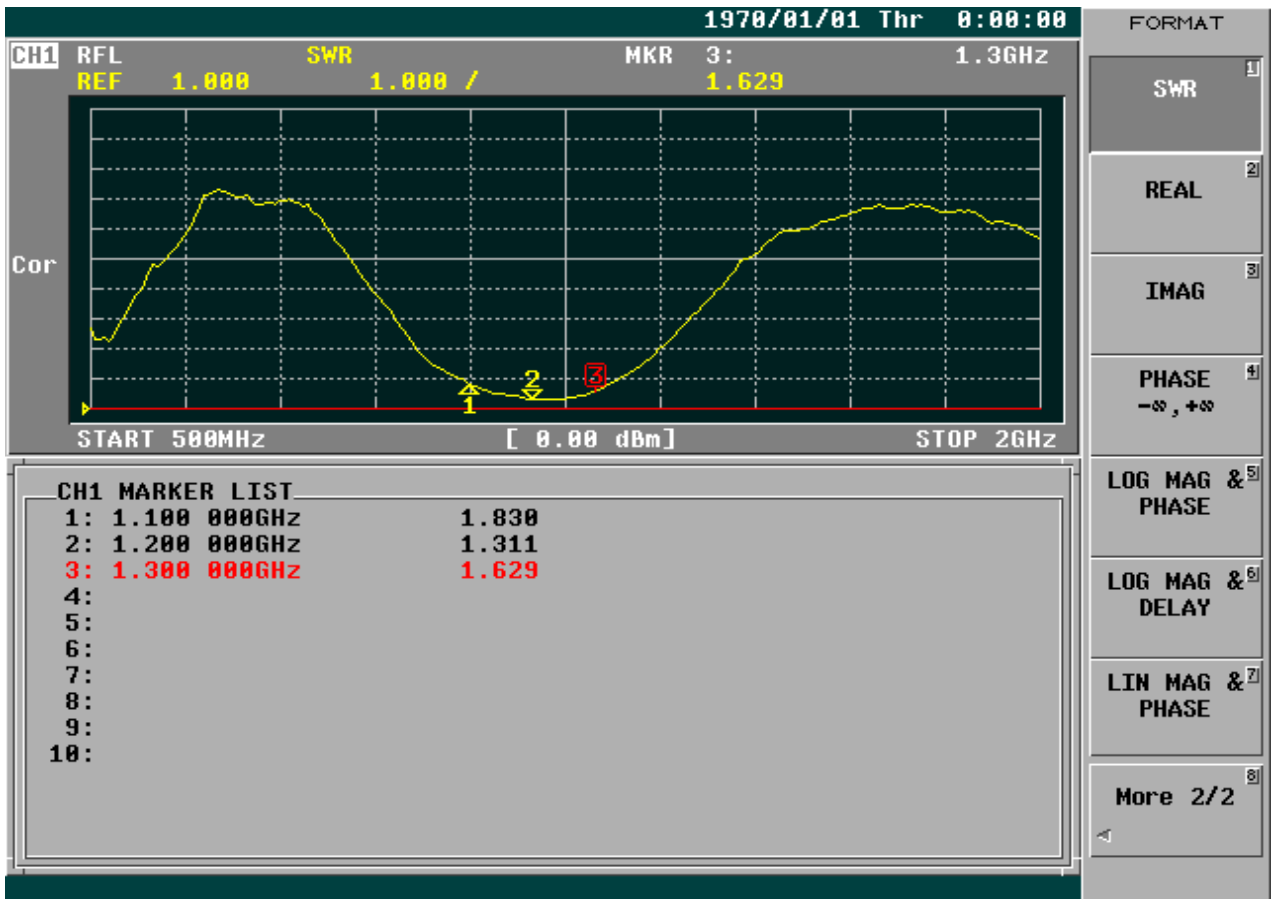
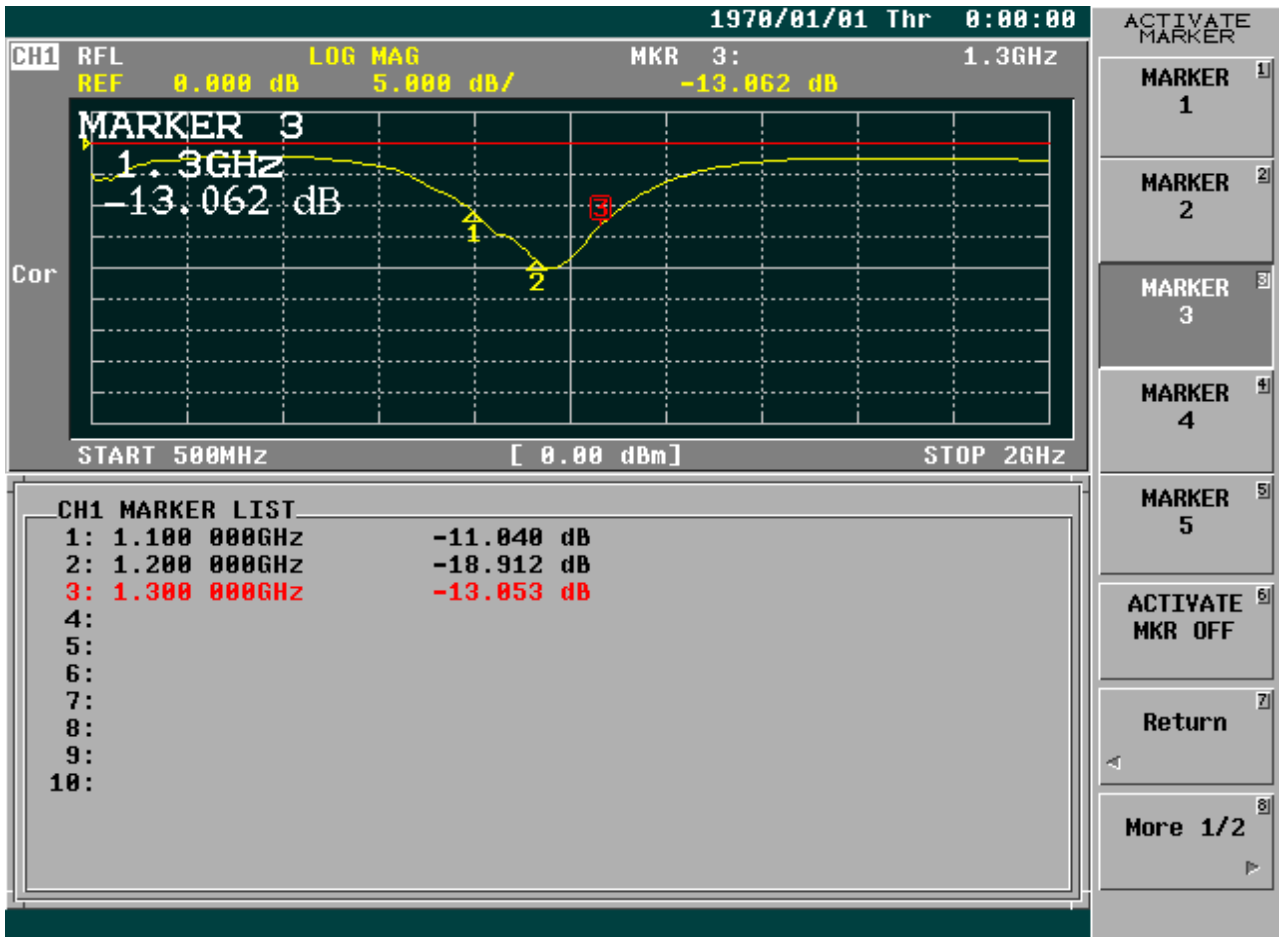
Parameter	Description
Antenna Type	External Antenna
Touch Type	Screw Type
Connector Type	SMA(Male)
Antenna Dimensions	140mm \pm 5
Antenna Color	Black
Operating Temperature Range	-30°C~+70°C
Storage Temperature Range	-30°C~+70°C

2. Appearance



3. Frequency

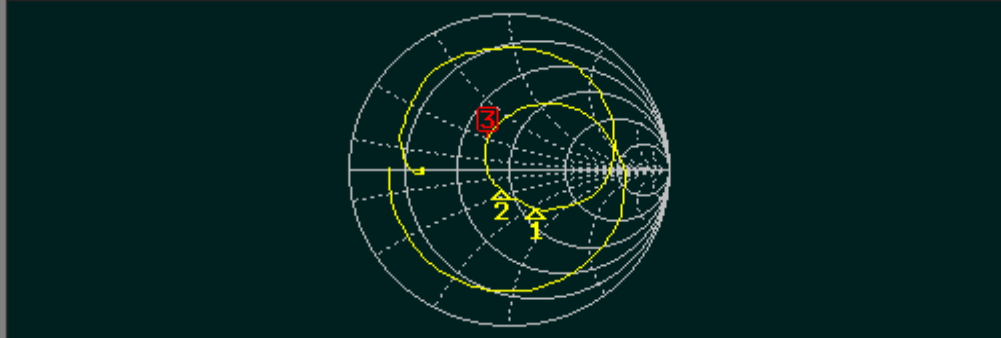




1970/01/01 Thr 0:00:00

CH1 RFL SMITH(R+jX) MKR 3: 1.3GHz
FS 1.000 36.195 Ω 15.835 Ω

Cor



START 500MHz [0.00 dBm] STOP 2GHz

CH1 MARKER LIST

1:	1.100 000GHz	59.598 Ω	-32.099 Ω	4.507pF
2:	1.200 000GHz	43.270 Ω	-10.712 Ω	12.300pF
3:	1.300 000GHz	36.195 Ω	15.835 Ω	1.938nH
4:				
5:				
6:				
7:				
8:				
9:				
10:				

FORMAT

LOG MAG

PHASE

DELAY

SMITH
(R+jX)

SMITH
(G+jB)

POLAR

LIN MAG

More 1/2