

UHF Bendable Antenna

MODEL: TH-340



1. GENERAL DESCRIPTION

Model No	P/N
TH-340	TH340-SMA(M)

Below is a table summarizing the antenna design specification.

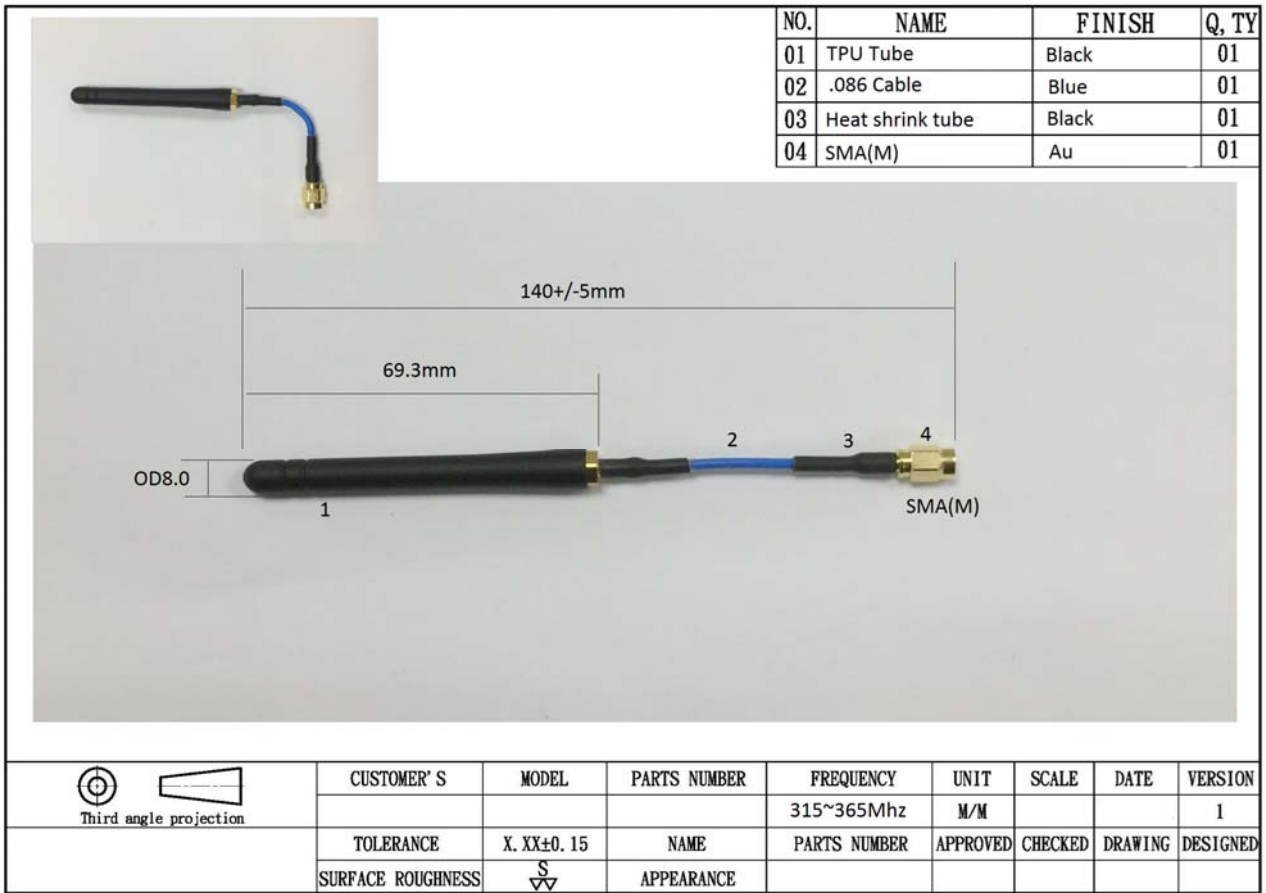
1.1 Electrical Properties

Parameter	Description
Frequency Band	315~365 MHz (340Mhz)
Nominal Impedance	50 ohm
Polarization	Vertical
Electrical Wave	Dipole
Return Loss	Please See Data-1
V.S.W.R	2.0 : 1
Gain	0db

1.2 Mechanical Properties

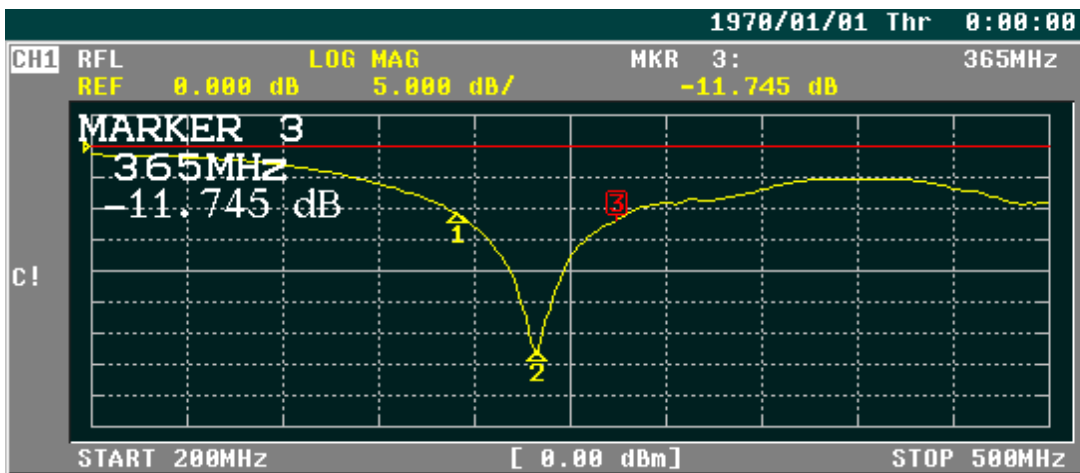
Parameter	Description
Antenna Type	External Antenna
Touch Type	Screw Type
Connector Type	SMA(Male)
Antenna Dimensions	140mm \pm 5
Antenna Color	Black
Operating Temperature Range	-30°C~+70°C
Storage Temperature Range	-30°C~+70°C

2. Appearance



3. Frequency





CH1 MARKER LIST

1:	315.000MHz	-10.920 dB
2:	340.000MHz	-32.828 dB
3:	365.000MHz	-11.759 dB
4:		
5:		
6:		
7:		
8:		
9:		
10:		

ACTIVATE MARKER

MARKER 1

MARKER 2

MARKER 3

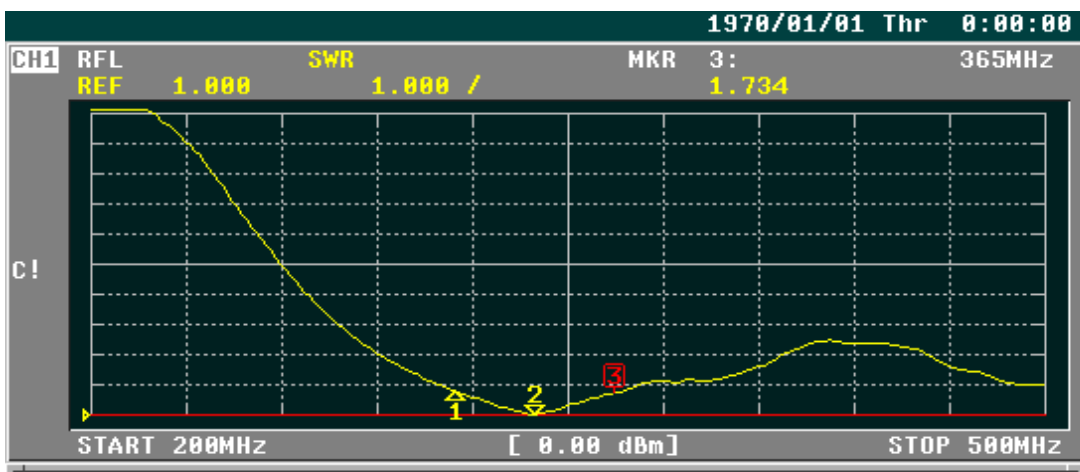
MARKER 4

MARKER 5

ACTIVATE MKR OFF

Return

More 1/2



CH1 MARKER LIST

1:	315.000MHz	1.779
2:	340.000MHz	1.032
3:	365.000MHz	1.734
4:		
5:		
6:		
7:		
8:		
9:		
10:		

FORMAT

SWR

REAL

IMAG

PHASE -∞, +∞

LOG MAG & PHASE

LOG MAG & DELAY

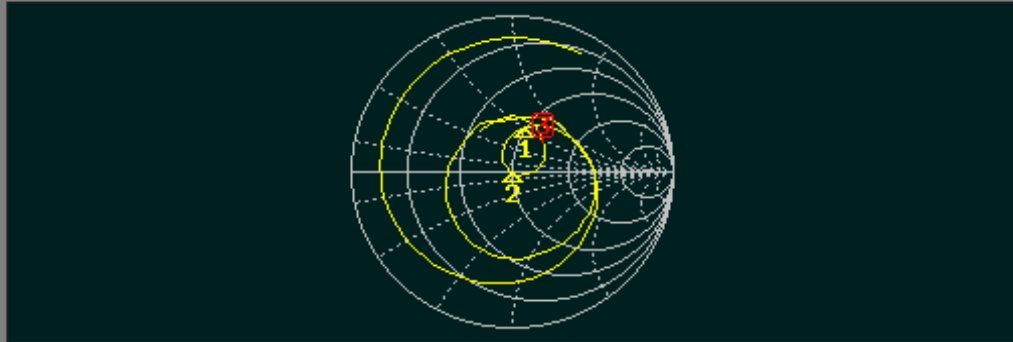
LIN MAG & PHASE

More 2/2

1970/01/01 Thr 0:00:00

CH1 RFL SMITH(R+jX) MKR 3: 365MHz
FS 1.000 66.471 Ω 27.363 Ω

C!



START 200MHz [0.00 dBm] STOP 500MHz

CH1 MARKER LIST

1:	315.000MHz	48.832 Ω	29.427 Ω	14.868nH
2:	340.000MHz	50.424 Ω	-791.817mΩ	591.175pF
3:	365.000MHz	66.471 Ω	27.363 Ω	11.931nH
4:				
5:				
6:				
7:				
8:				
9:				
10:				

FORMAT

LOG MAG

PHASE

DELAY

SMITH
(R+jX)

SMITH
(G+jB)

POLAR

LIN MAG

More 1/2