

900Mhz Antenna

MODEL: TH-900H



1.. GENERAL DESCRIPTION

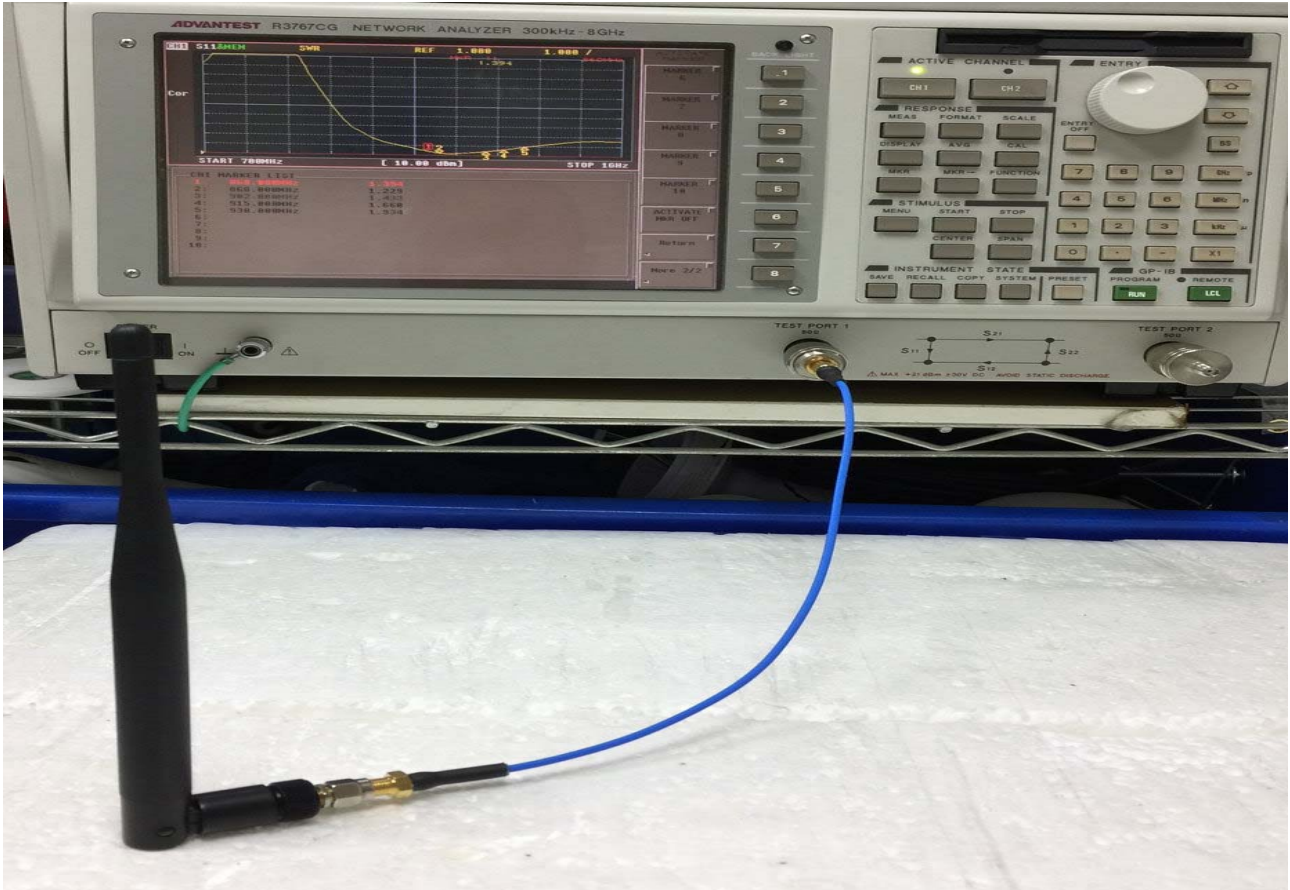
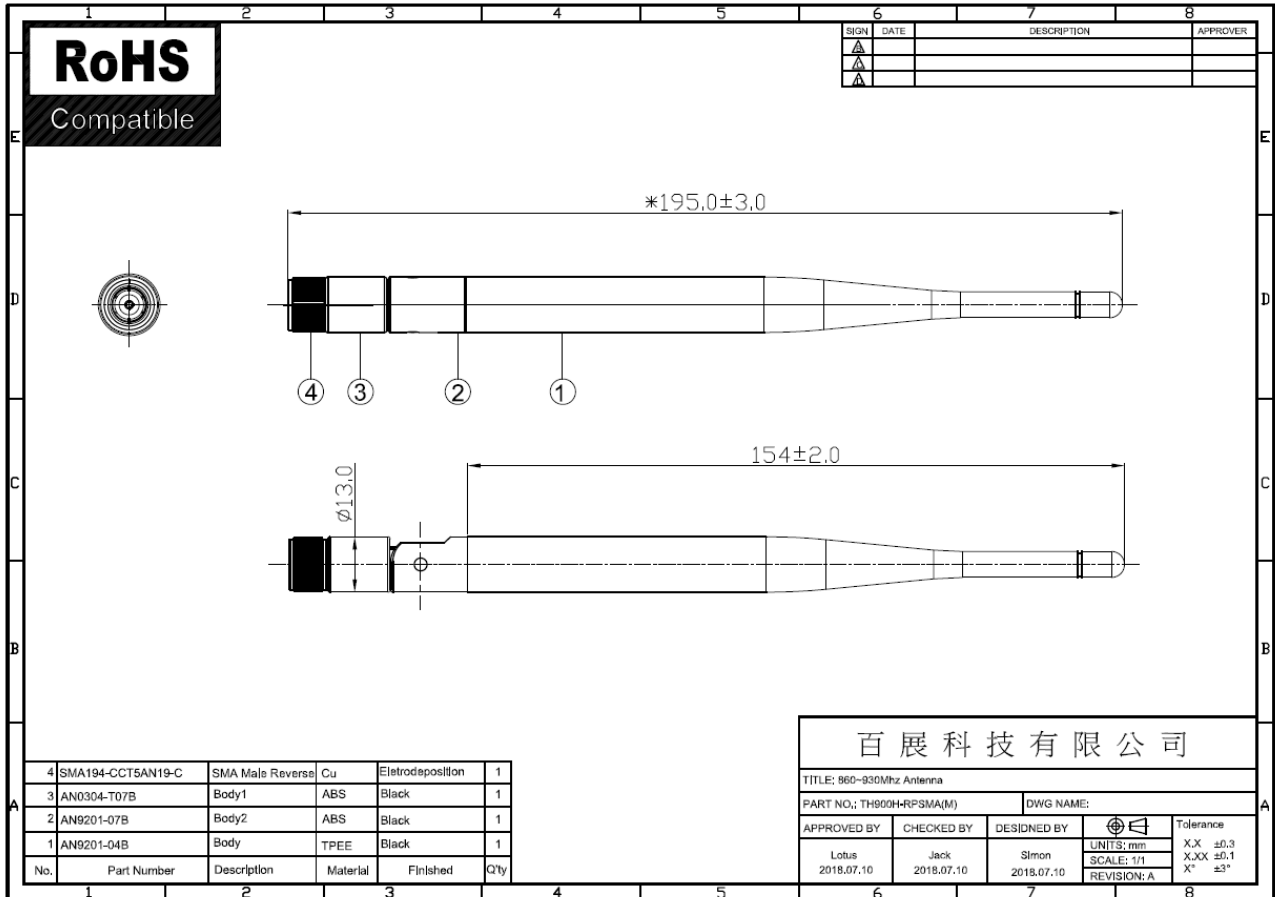
Model No
TH900H-RPSMA(M)

1.1 Electrical Properties

Parameter	Description
Frequency Band	860-930MHz
Nominal Impedance	50 ohm
Polarization	Vertical
V.S.W.R	2.5:1
Gain	1-3db

1.2 Mechanical Properties

Parameter	Description
Antenna Type	External Antenna
Material	TPE
Touch Type	Screw Type
Connector Type	RPSMA(M) connector or SMA(M)
Antenna Dimensions	195mm \pm 3.0
Antenna Color	Black
Operating Temperature Range	-30°C~+70°C
Storage Temperature Range	-30°C~+70°C





CH1 MARKER LIST

1:	860.000MHz	1.434
2:	868.000MHz	1.281
3:	902.000MHz	1.508
4:	915.000MHz	1.730
5:	930.000MHz	2.028
6:		
7:		
8:		
9:		
10:		

ACTIVATE MARKER

MARKER 6

MARKER 7

MARKER 8

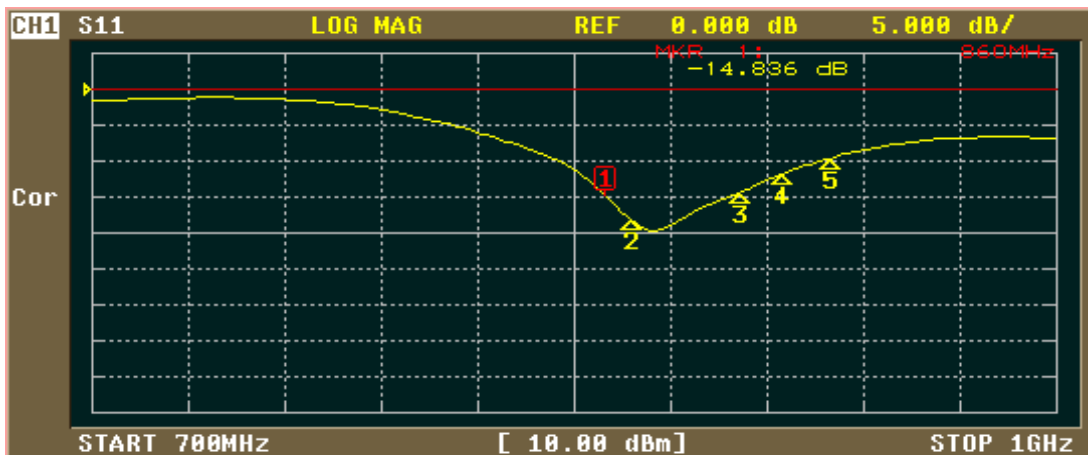
MARKER 9

MARKER 10

ACTIVATE MKR OFF

Return

More 2/2



CH1 MARKER LIST

1:	860.000MHz	-14.828 dB
2:	868.000MHz	-18.228 dB
3:	902.000MHz	-14.260 dB
4:	915.000MHz	-11.734 dB
5:	930.000MHz	-9.551 dB
6:		
7:		
8:		
9:		
10:		

FORMAT

LOG MAG

PHASE

DELAY

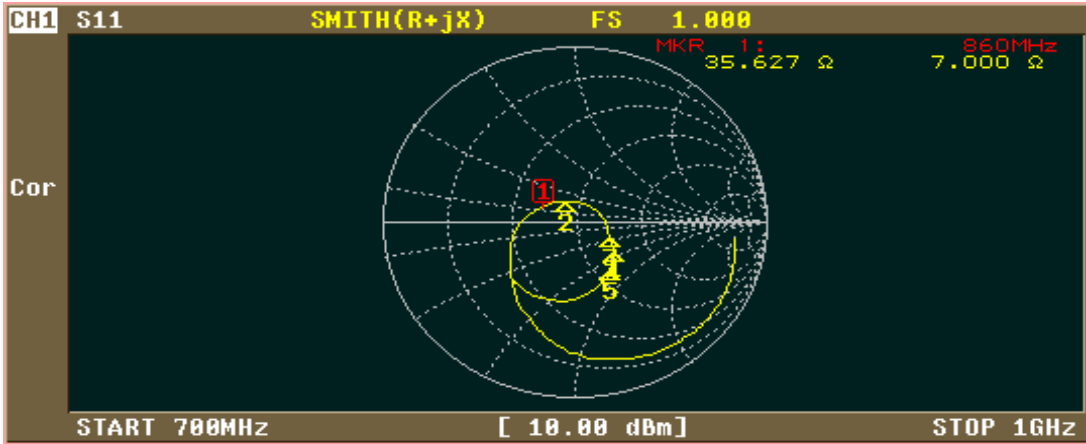
SMITH (R+jX)

SMITH (G+jB)

POLAR

LIN MAG

More 1/2



- FORMAT
- LOG MAG 1
 - PHASE 2
 - DELAY 3
 - SMITH (R+jX) 4
 - SMITH (G+jB) 5
 - POLAR 6
 - LIN MAG 7
 - More 1/2 8

CH1 MARKER LIST

1:	860.000MHz	35.628 Ω	6.994 Ω	1.294nH
2:	868.000MHz	44.072 Ω	10.647 Ω	1.952nH
3:	902.000MHz	70.316 Ω	-13.092 Ω	13.476pF
4:	915.000MHz	68.985 Ω	-25.254 Ω	6.887pF
5:	930.000MHz	58.877 Ω	-36.818 Ω	4.648pF
6:				
7:				
8:				
9:				
10:				