

UHF Omni Antenna

Model : TH-610C



1.. GENERAL DESCRIPTION

P/N
TH-610C-N(M)

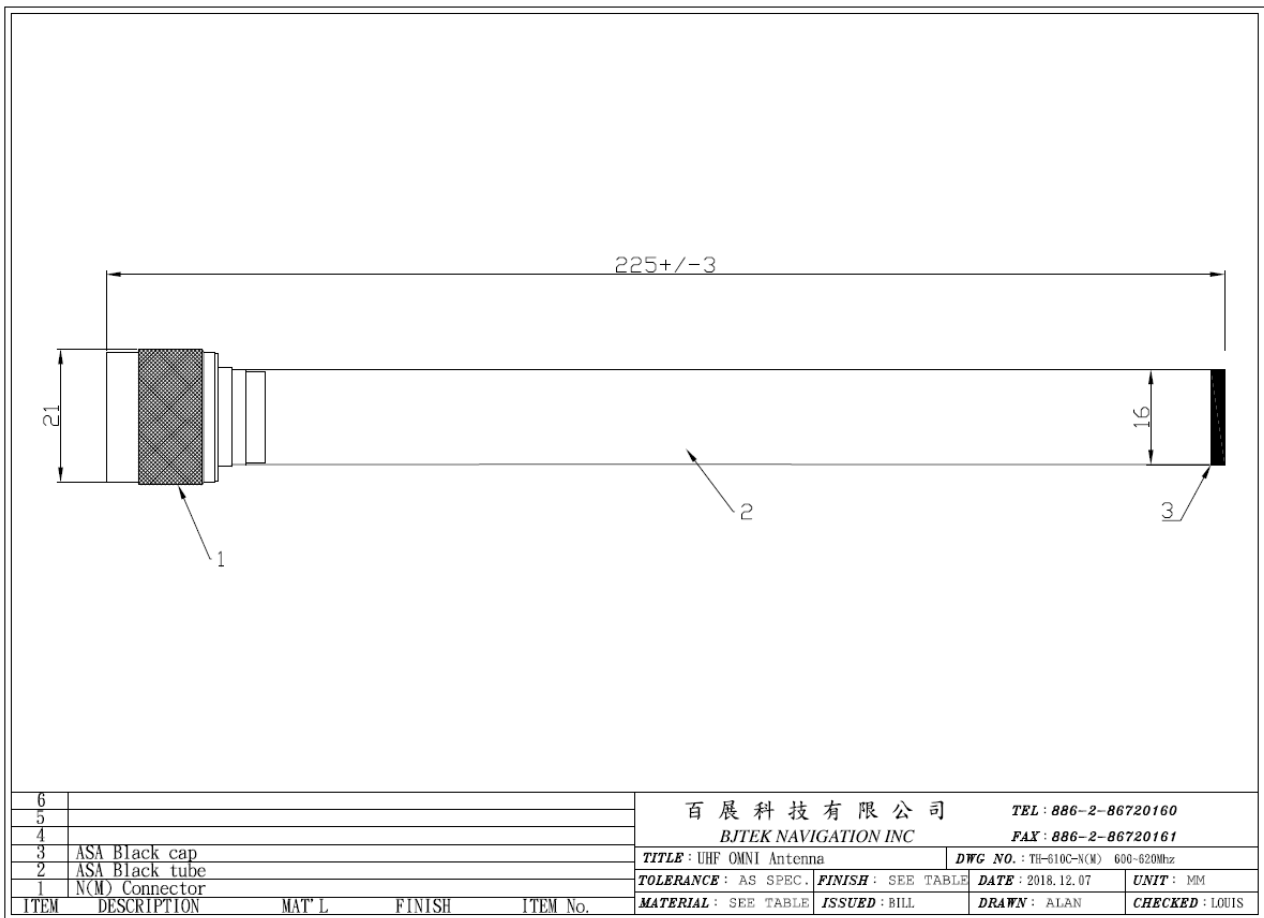
1.1 Electrical Properties

Parameter	Description
Frequency Band	600~620MHz
Nominal Impedance	50 ohm
Polarization	Vertical
V.S.W.R	2.0:1

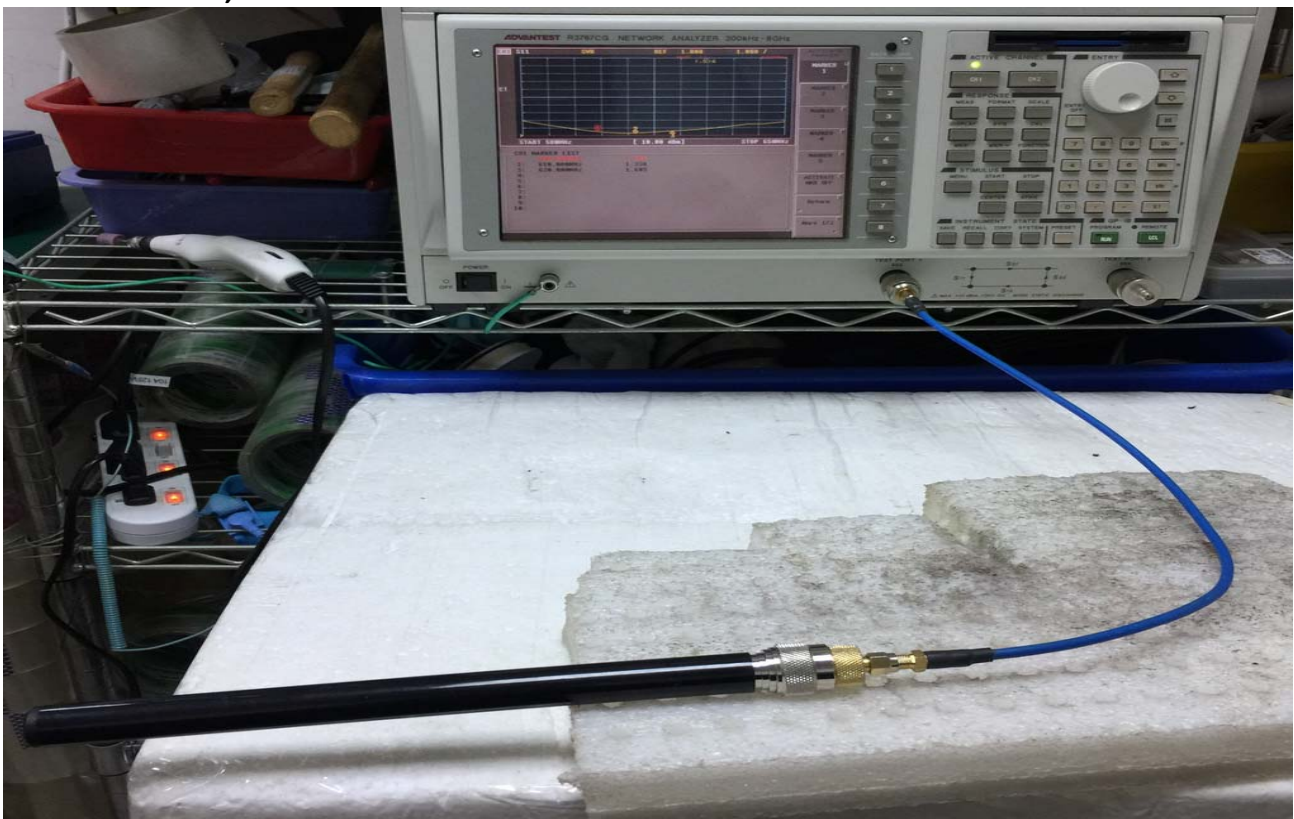
1.2 Mechanical Properties

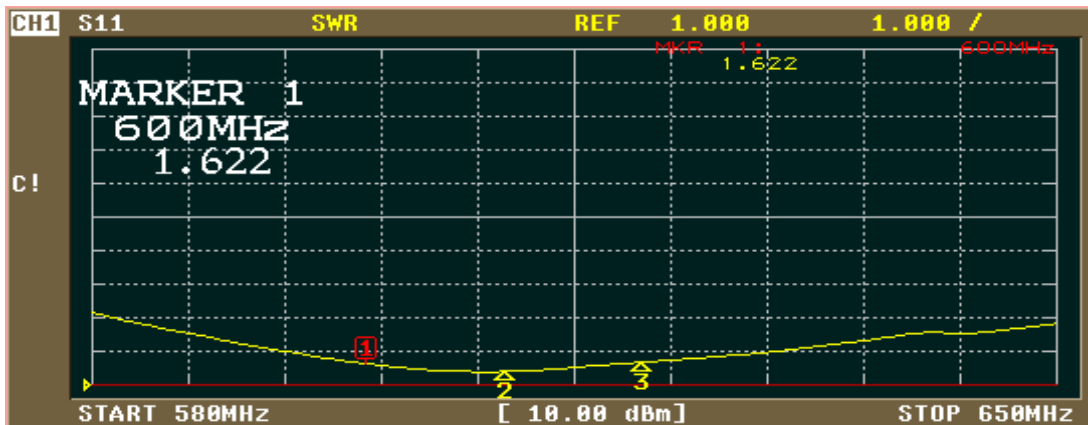
Parameter	Description
Antenna Type	External Antenna
Material	ASA
Mount Type	Screw Type
Connector Type	N Connector (Male)
Antenna Dimensions	225mm \pm 3
Antenna Color	Black
Operating Temperature Range	-30°C~+80°C
Storage Temperature Range	-30°C~+80°C

2. Appearance



3. Return Loss, V.S.W.R. and Smith Chart





CH1 MARKER LIST

1:	600.000MHz	1.622
2:	610.000MHz	1.398
3:	620.000MHz	1.678
4:		
5:		
6:		
7:		
8:		
9:		
10:		

ACTIVATE MARKER

MARKER 1

MARKER 2

MARKER 3

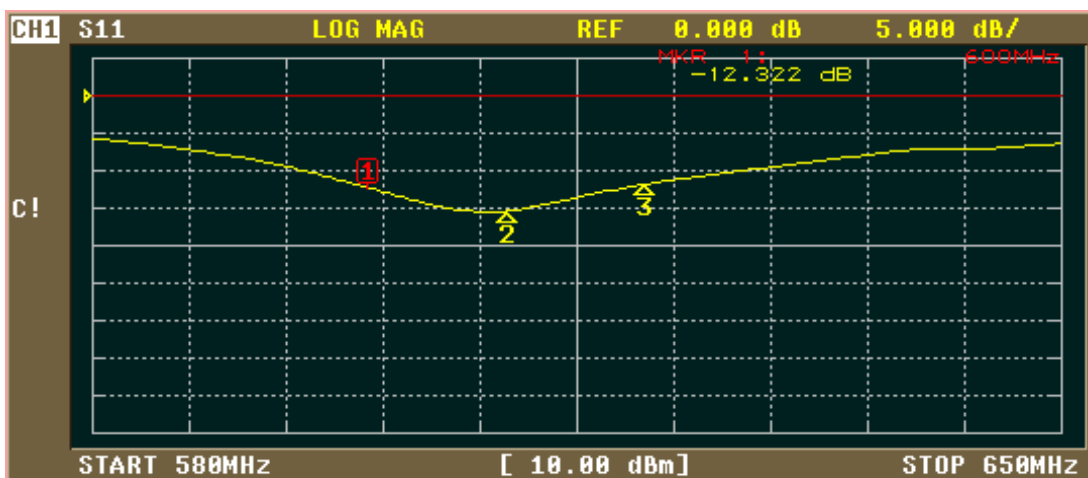
MARKER 4

MARKER 5

ACTIVATE MKR OFF

Return

More 1/2



CH1 MARKER LIST

1:	600.000MHz	-12.328 dB
2:	610.000MHz	-15.365 dB
3:	620.000MHz	-11.815 dB
4:		
5:		
6:		
7:		
8:		
9:		
10:		

FORMAT

LOG MAG

PHASE

DELAY

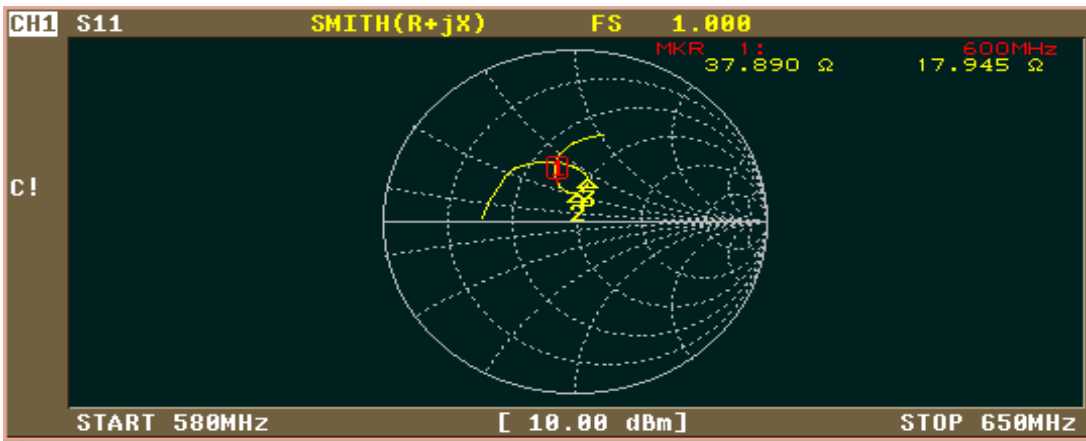
SMITH (R+jX)

SMITH (G+jB)

POLAR

LIN MAG

More 1/2



- FORMAT
- LOG MAG 1
 - PHASE 2
 - DELAY 3
 - SMITH (R+jX) 4
 - SMITH (G+jB) 5
 - POLAR 6
 - LIN MAG 7
 - More 1/2 8

CH1 MARKER LIST

1:	600.000MHz	37.931 Ω	17.958 Ω	4.761nH
2:	610.000MHz	47.947 Ω	16.784 Ω	4.358nH
3:	620.000MHz	58.116 Ω	26.599 Ω	6.828nH
4:				
5:				
6:				
7:				
8:				
9:				
10:				