

UHF Omni Antenna

Model : TH-450E



1.. GENERAL DESCRIPTION

P/N
TH-450E-N(M)

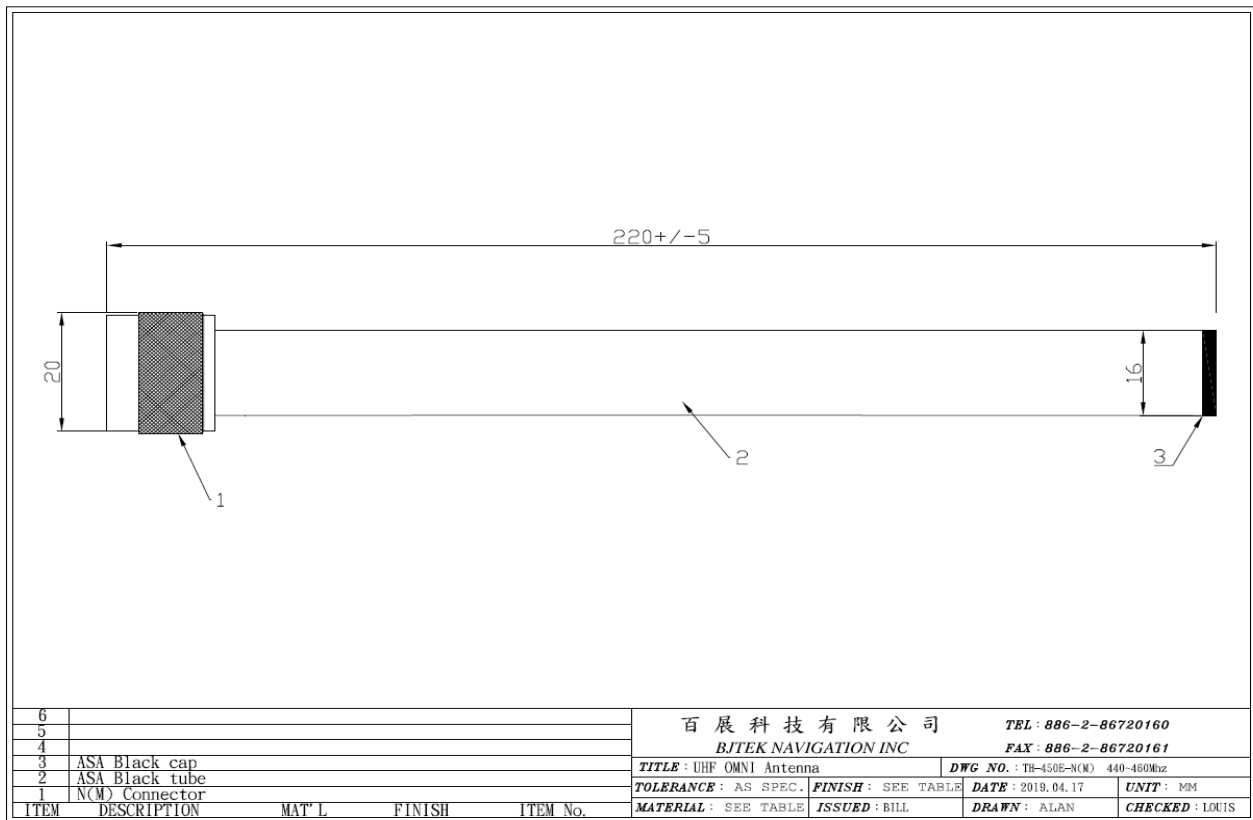
1.1 Electrical Properties

Parameter	Description
Frequency Band	440~460MHz
Nominal Impedance	50 ohm
Polarization	Vertical
V.S.W.R	3.0:1
Power	50-100W
Gain	2db

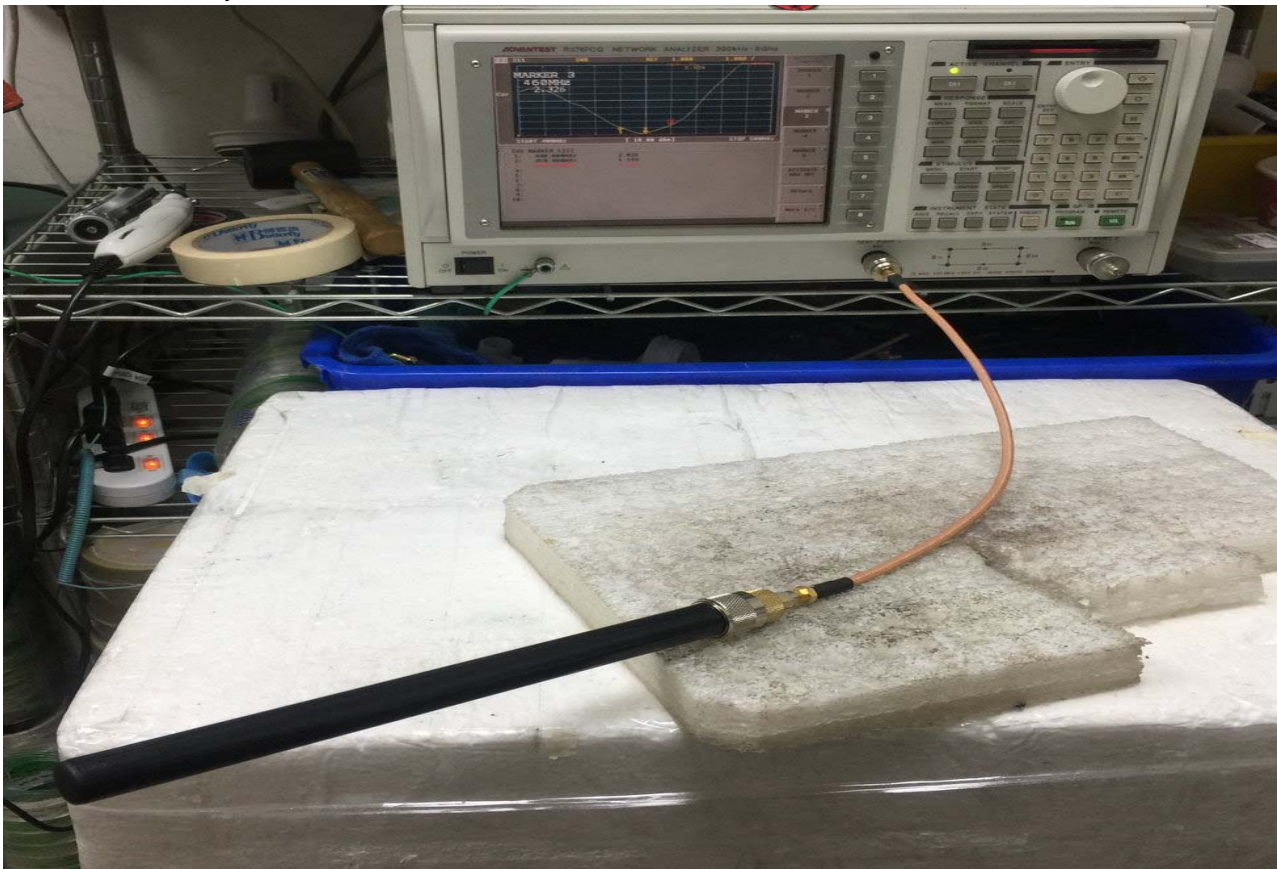
1.2 Mechanical Properties

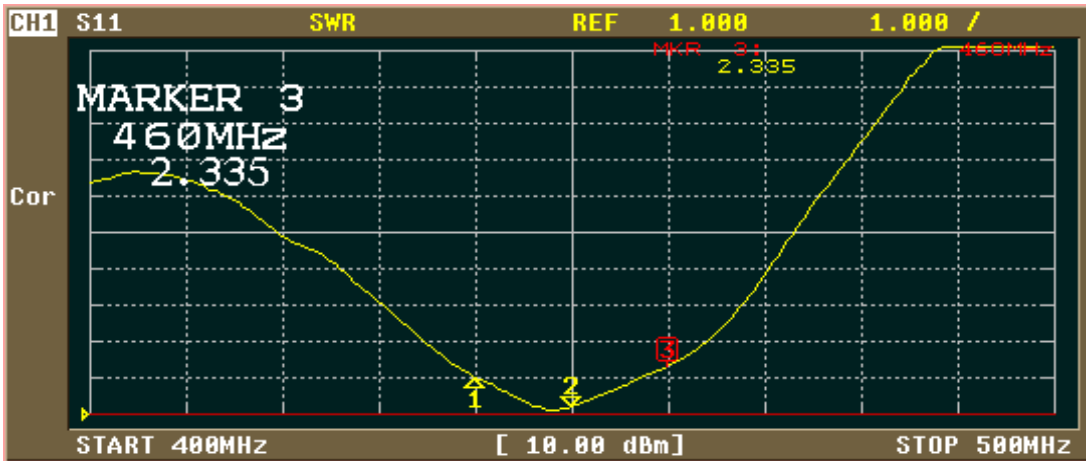
Parameter	Description
Antenna Type	External Antenna
Material	ASA
Touch Type	Screw Type
Connector Type	N Connector (Male)
Antenna Dimensions	220mm \pm 5
Antenna Color	Black
Operating Temperature Range	-30°C~+80°C
Storage Temperature Range	-30°C~+80°C

2. Appearance



3. Return Loss, V.S.W.R. and Smith Chart





CH1 MARKER LIST

1:	440.000MHz	2.026
2:	450.000MHz	1.226
3:	460.000MHz	2.335
4:		
5:		
6:		
7:		
8:		
9:		
10:		

ACTIVATE MARKER

MARKER 1

MARKER 2

MARKER 3

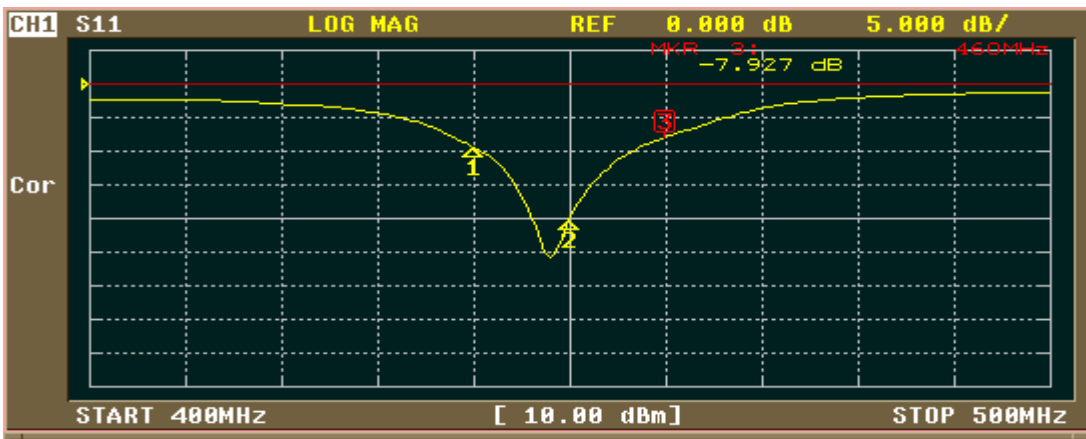
MARKER 4

MARKER 5

ACTIVATE MKR OFF

Return

More 1/2



CH1 MARKER LIST

1:	440.000MHz	-9.484 dB
2:	450.000MHz	-20.192 dB
3:	460.000MHz	-7.927 dB
4:		
5:		
6:		
7:		
8:		
9:		
10:		

FORMAT

LOG MAG

PHASE

DELAY

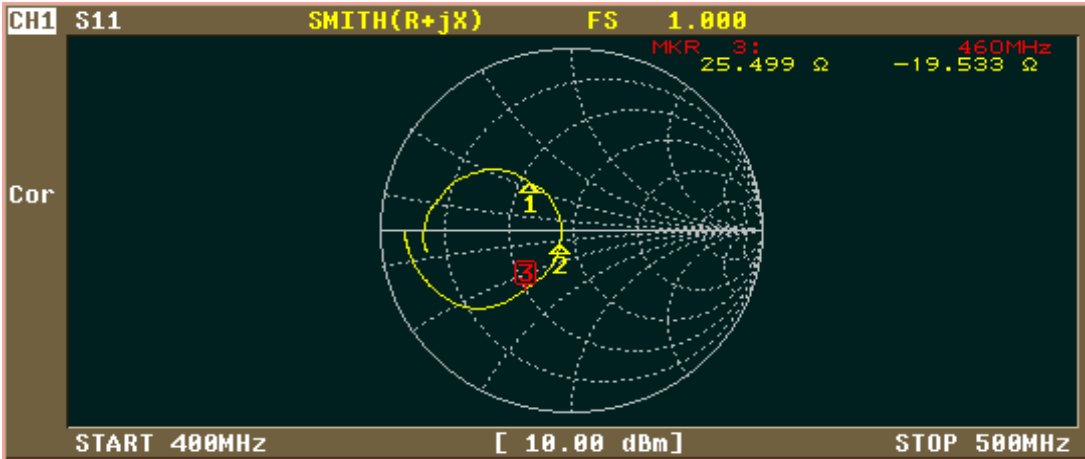
SMITH (R+jX)

SMITH (G+jB)

POLAR

LIN MAG

More 1/2



CH1 MARKER LIST

1:	440.000MHz	28.659 Ω	16.746 Ω	6.057nH
2:	450.000MHz	43.634 Ω	-6.739 Ω	52.479pF
3:	460.000MHz	25.498 Ω	-19.530 Ω	17.715pF
4:				
5:				
6:				
7:				
8:				
9:				
10:				

- FORMAT
- LOG MAG 1
 - PHASE 2
 - DELAY 3
 - SMITH (R+jX) 4
 - SMITH (G+jB) 5
 - POLAR 6
 - LIN MAG 7
 - More 1/2 8