

Ceramic Helix Passive Antenna For Beidou/GPS/Glonass/Iridium/L Band

MODEL: IA100P



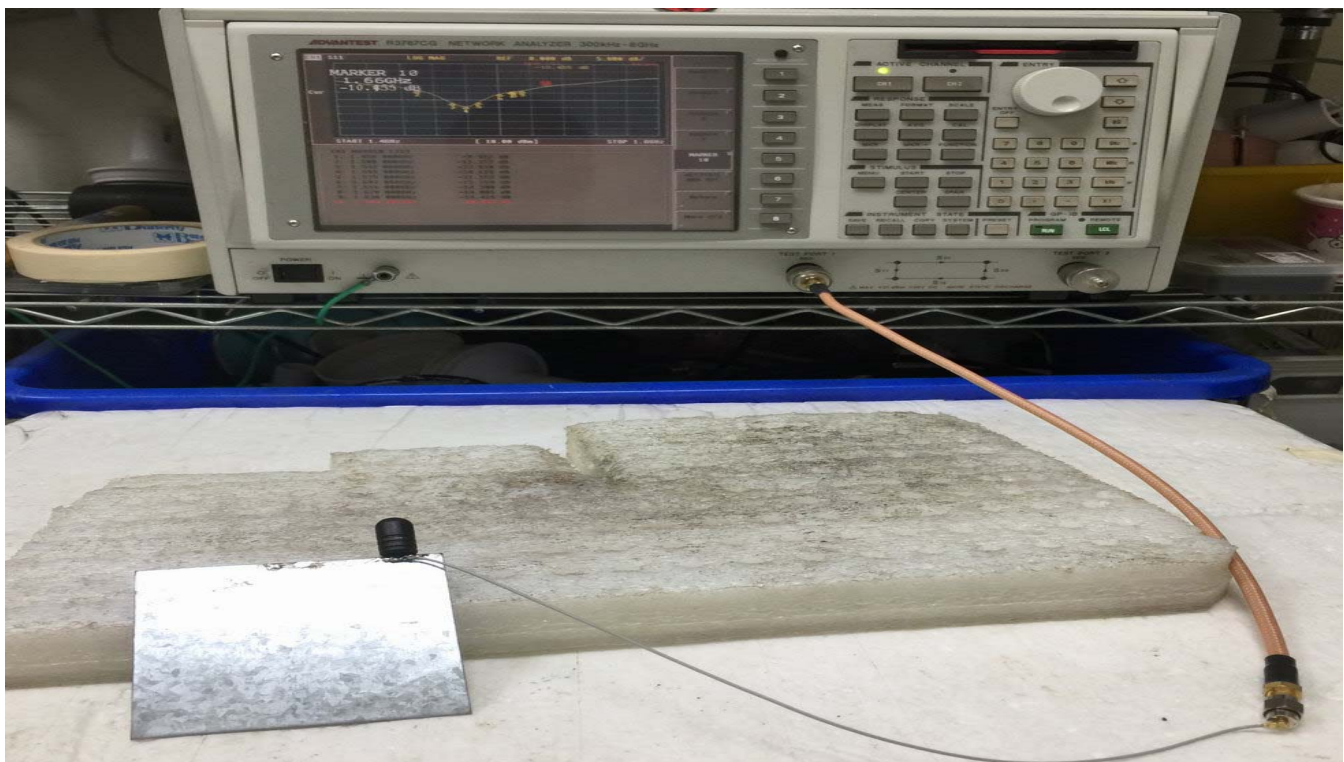
- Operation temperature: -40°C to +85°C
- Frequency range: 1450-1660MHz
- OD5.0mm x 17.3mm (+/-0.5mm)
- Bandwidth :200Mhz

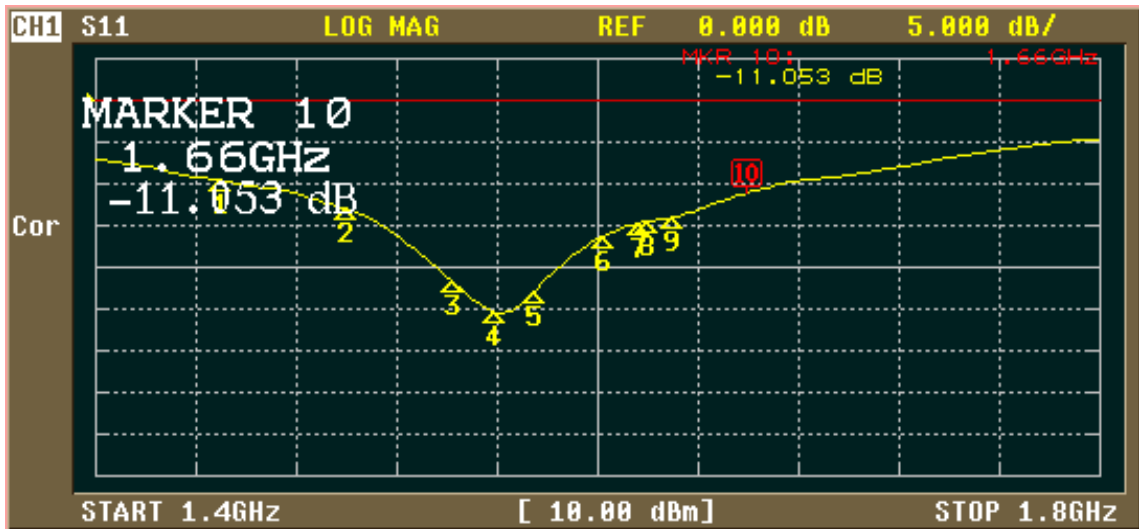
This product specifications are applied to the helical antenna composed of helix on the dielectric material and conducting mechanism used for the wireless communication system. **Please contact us when using this product for any other applications than described in the above.**

Electrical Characteristics:

Item	Specification
Center Frequency @ 70*70mm GND Plane & Plastic cover	1450.0-1660Mhz
Band Width @ Return Loss \leq -10dB	\geq 200
V.S.W.R. @ Center Frequency	\leq 1.5
Axial ratio	\leq 3
Polarization	RHCP
Impedance	50

Return Loss and Smith-char :





ACTIVATE MARKER

MARKER 6

MARKER 7

MARKER 8

MARKER 9

MARKER 10

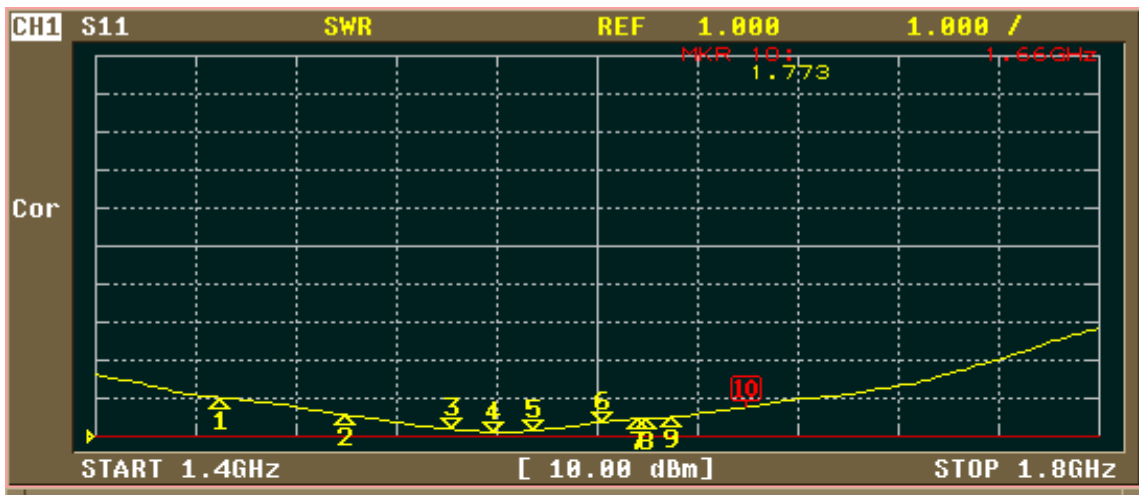
ACTIVATE MKR OFF

Return

More 2/2

CH1 MARKER LIST

1:	1.450 000GHz	-9.569 dB
2:	1.500 000GHz	-13.014 dB
3:	1.542 000GHz	-21.488 dB
4:	1.559 000GHz	-25.382 dB
5:	1.575 000GHz	-22.905 dB
6:	1.602 000GHz	-16.293 dB
7:	1.616 000GHz	-14.732 dB
8:	1.620 000GHz	-14.487 dB
9:	1.630 000GHz	-14.046 dB
10:	1.660 000GHz	-11.053 dB



FORMAT

SWR

REAL

IMAG

PHASE -∞, +∞

LOG MAG & PHASE

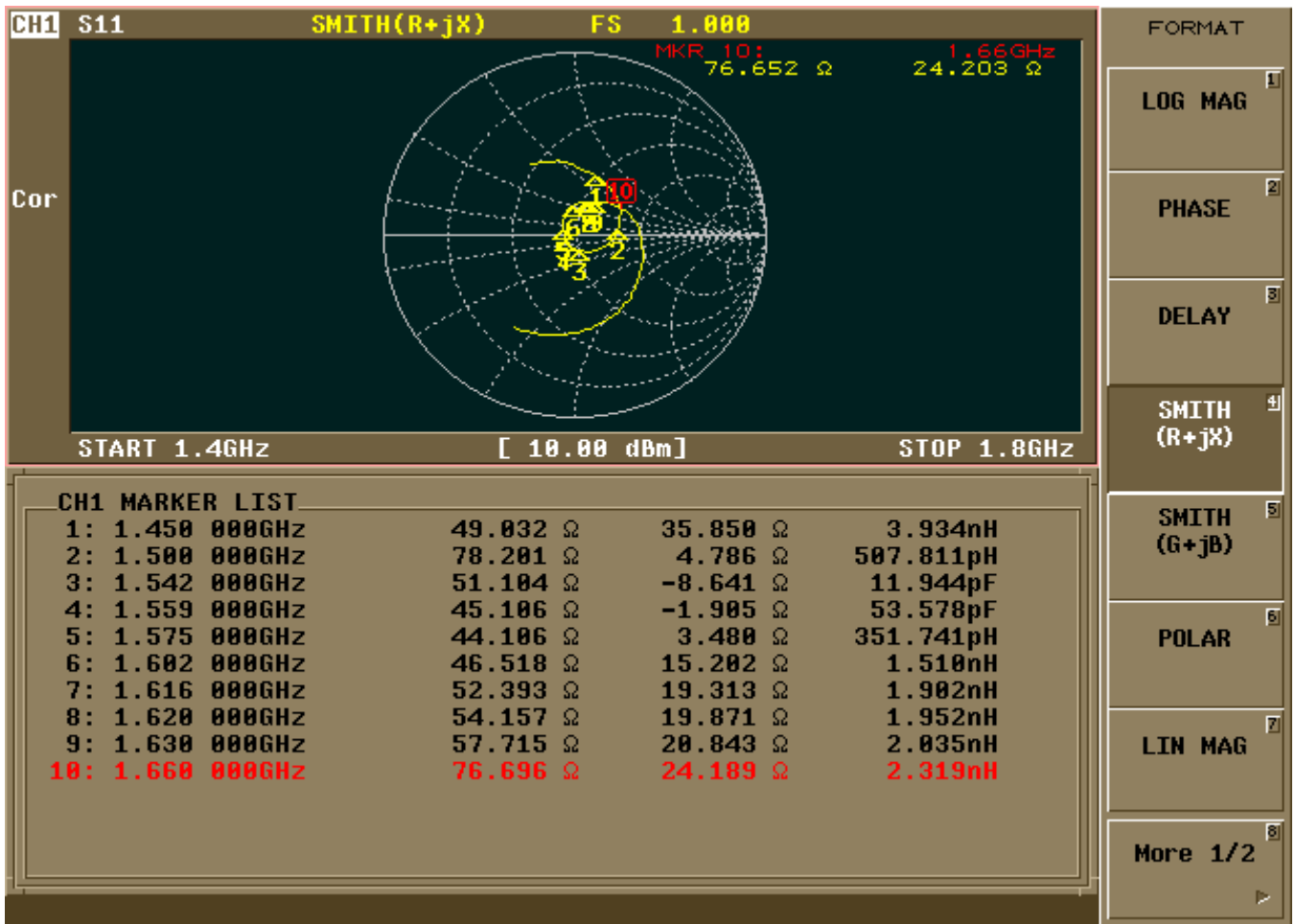
LOG MAG & DELAY

LIN MAG & PHASE

More 2/2

CH1 MARKER LIST

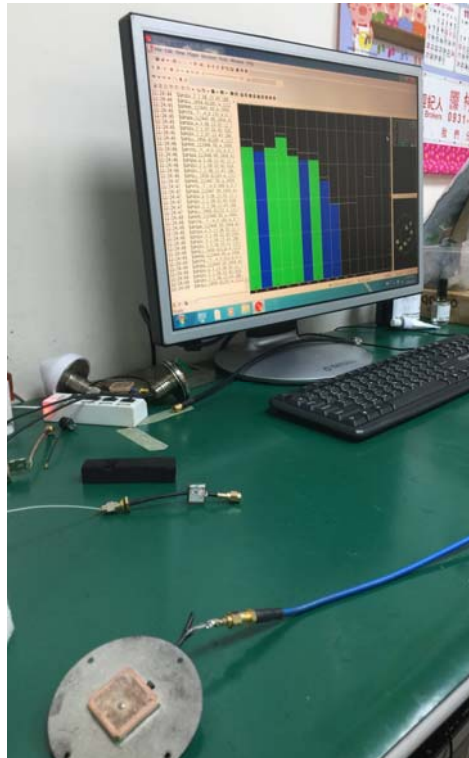
1:	1.450 000GHz	2.027
2:	1.500 000GHz	1.566
3:	1.542 000GHz	1.186
4:	1.559 000GHz	1.116
5:	1.575 000GHz	1.156
6:	1.602 000GHz	1.379
7:	1.616 000GHz	1.457
8:	1.620 000GHz	1.471
9:	1.630 000GHz	1.506
10:	1.660 000GHz	1.773



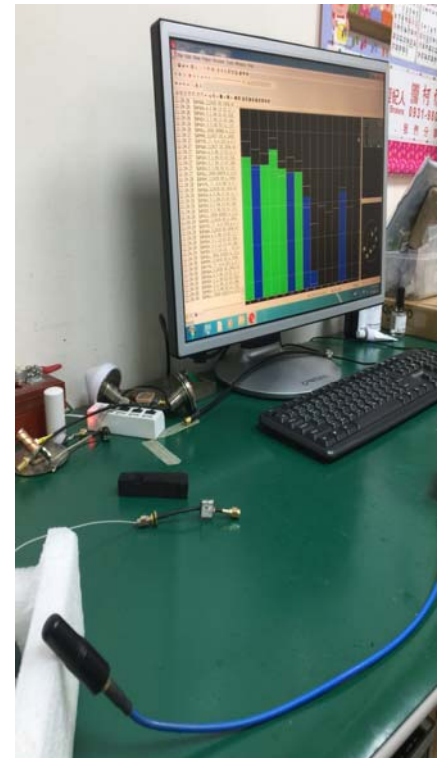
IA100P

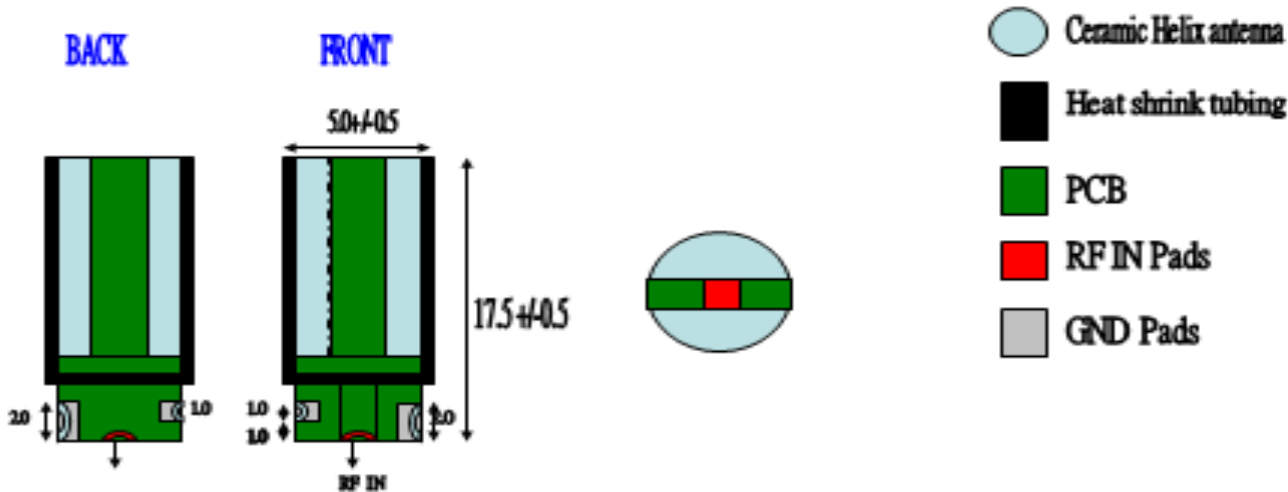


GAM25



Other Ceramic Helix Antenna

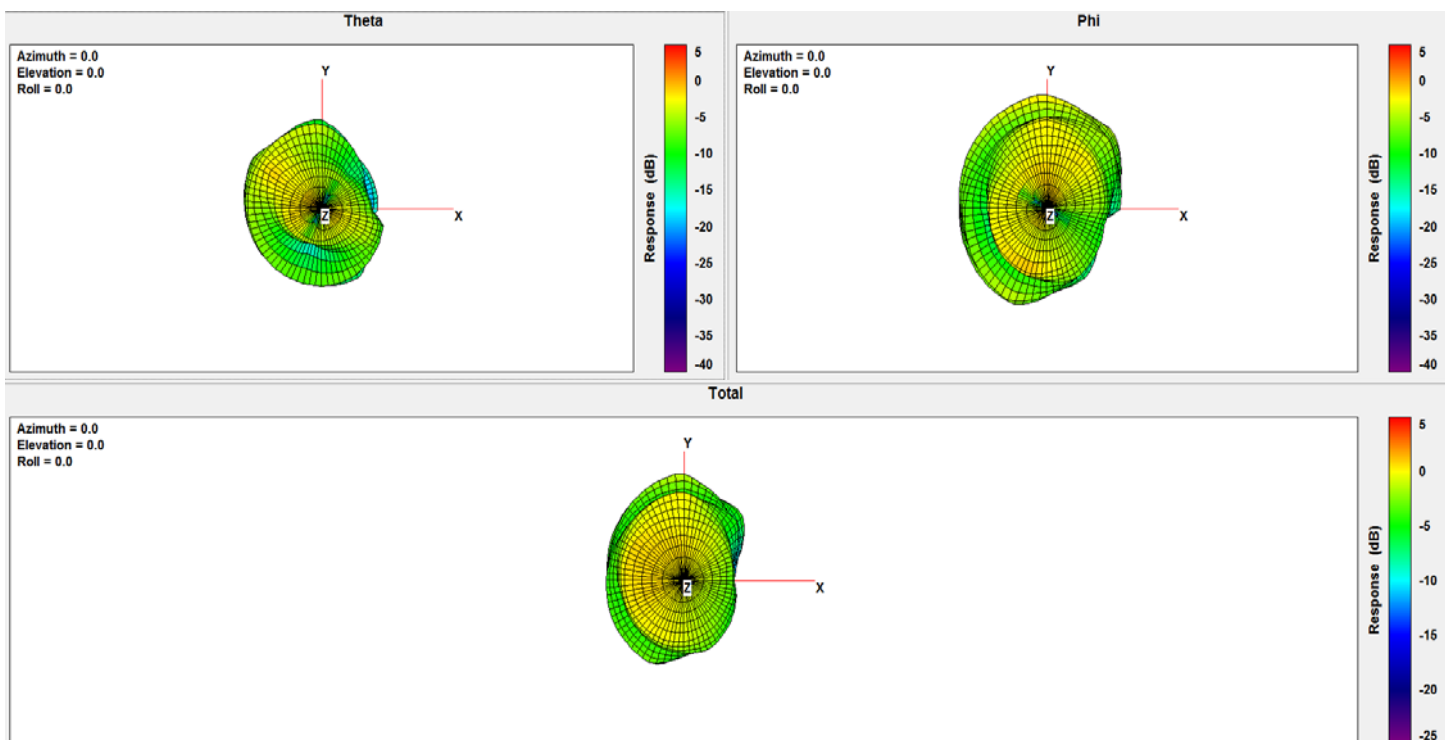




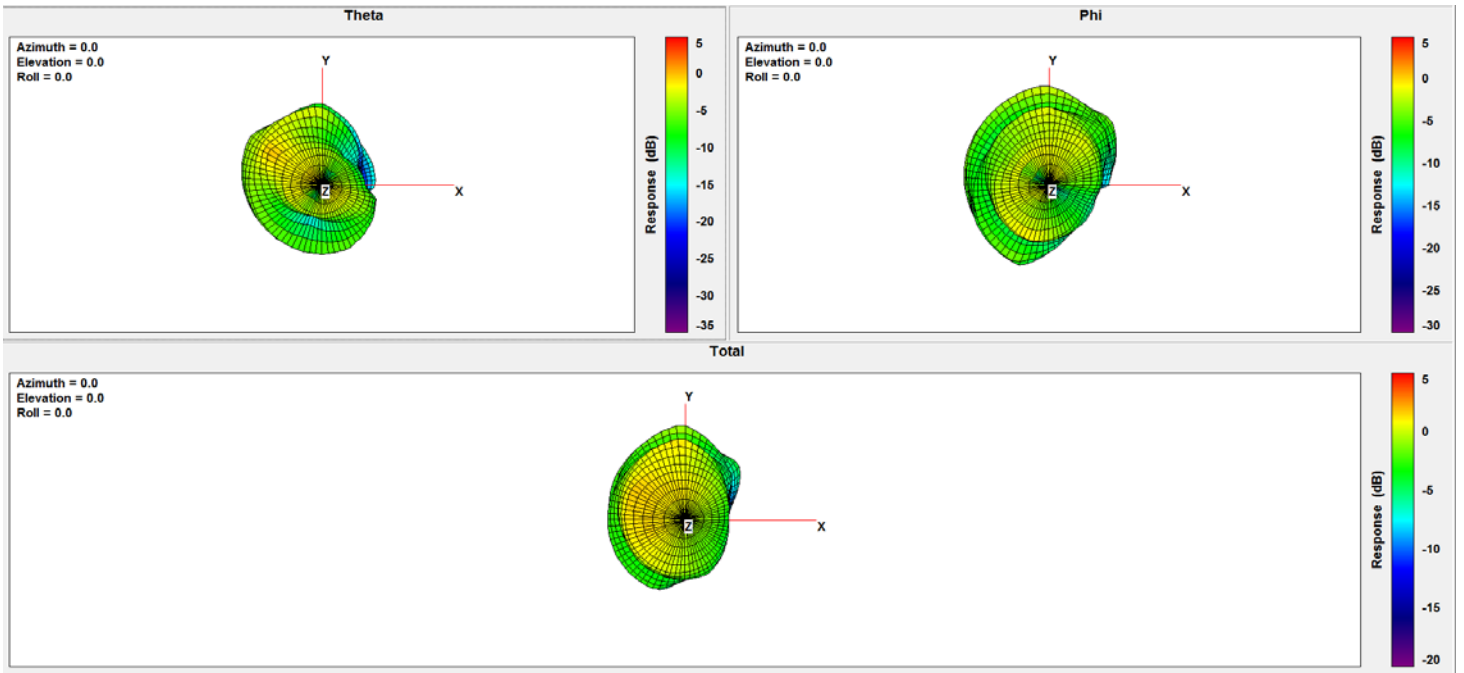
ON 70*70mm GND Test :

Frequency (MHz)	1450	1500	1542	1559	1575	1602	1610	1616	1620	1626	1630	1660
Peak Gain (dBi)	1.22	2.22	2.796	2.84	2.91	3.03	3.04	2.97	2.97	2.94	2.86	2.54
Efficiency (%)	43.76	50.02	53.74	53.69	53.08	53.39	53.01	52.78	52.51	52.15	51.68	48.66

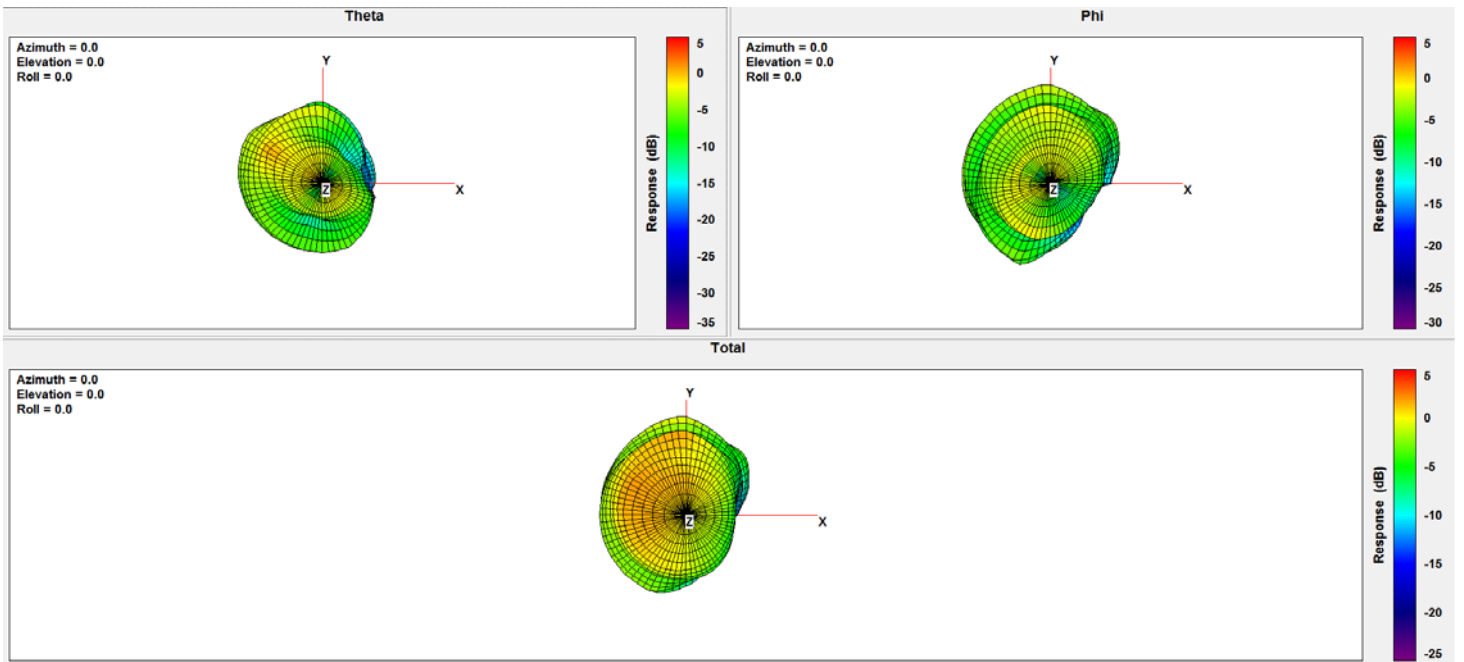
1450Mhz:



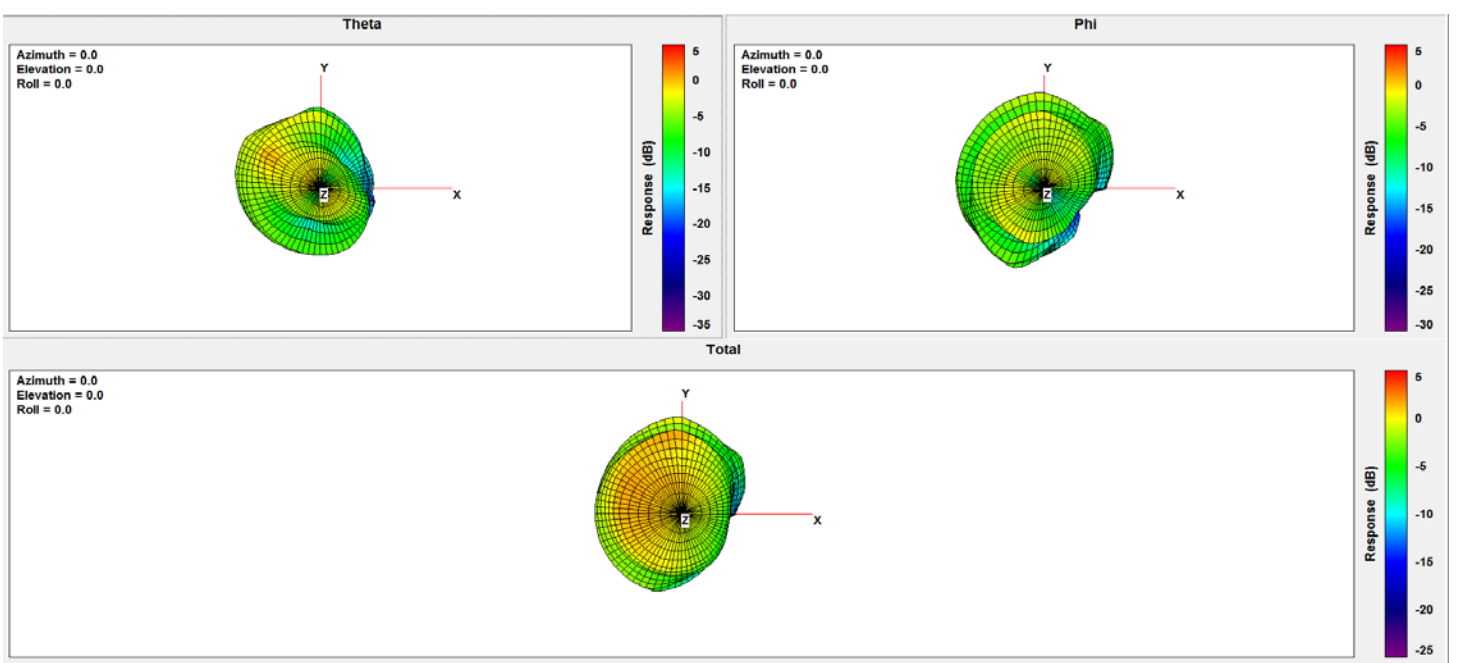
1500Mhz:



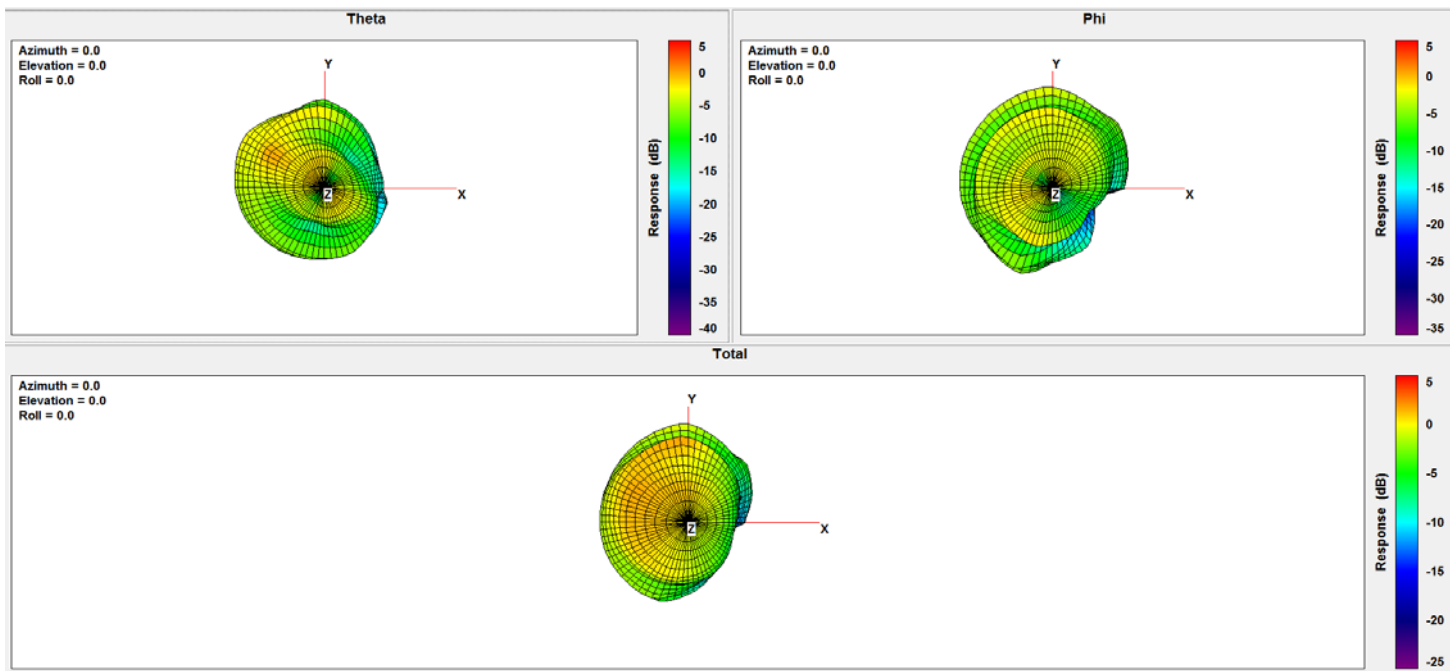
1542Mhz:



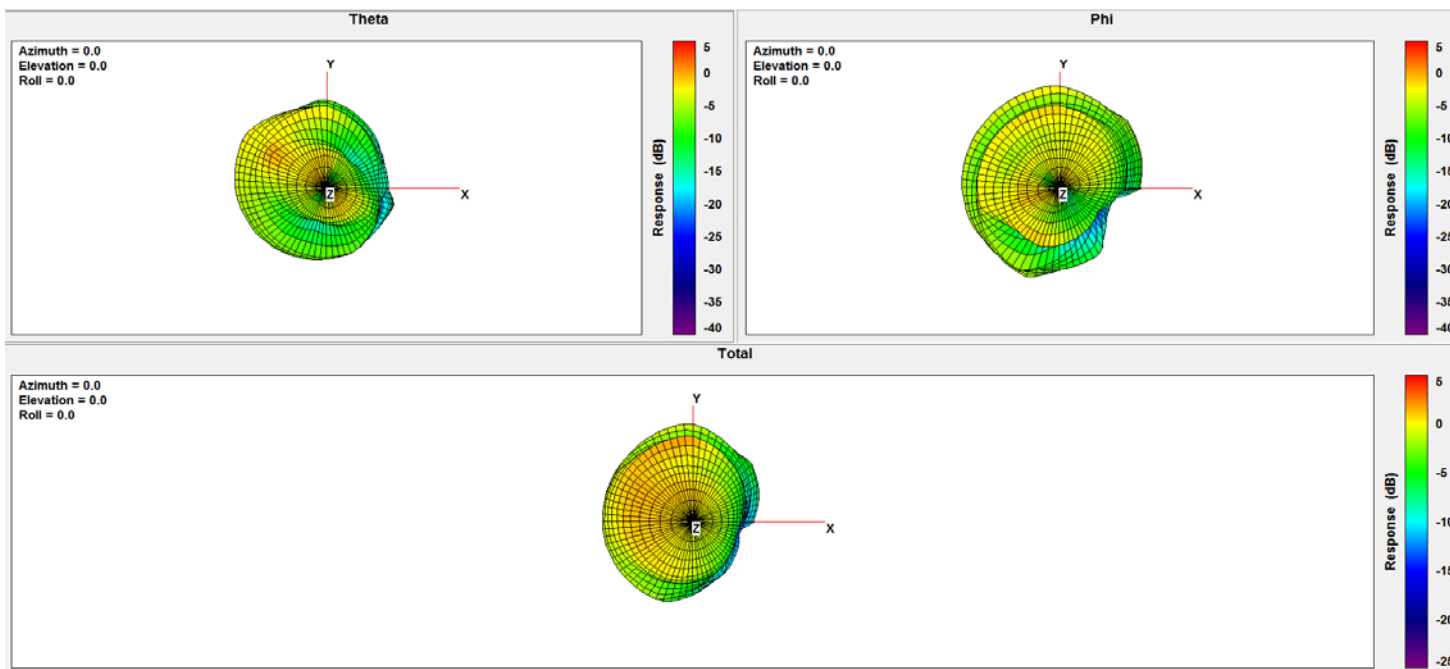
1559Mhz:



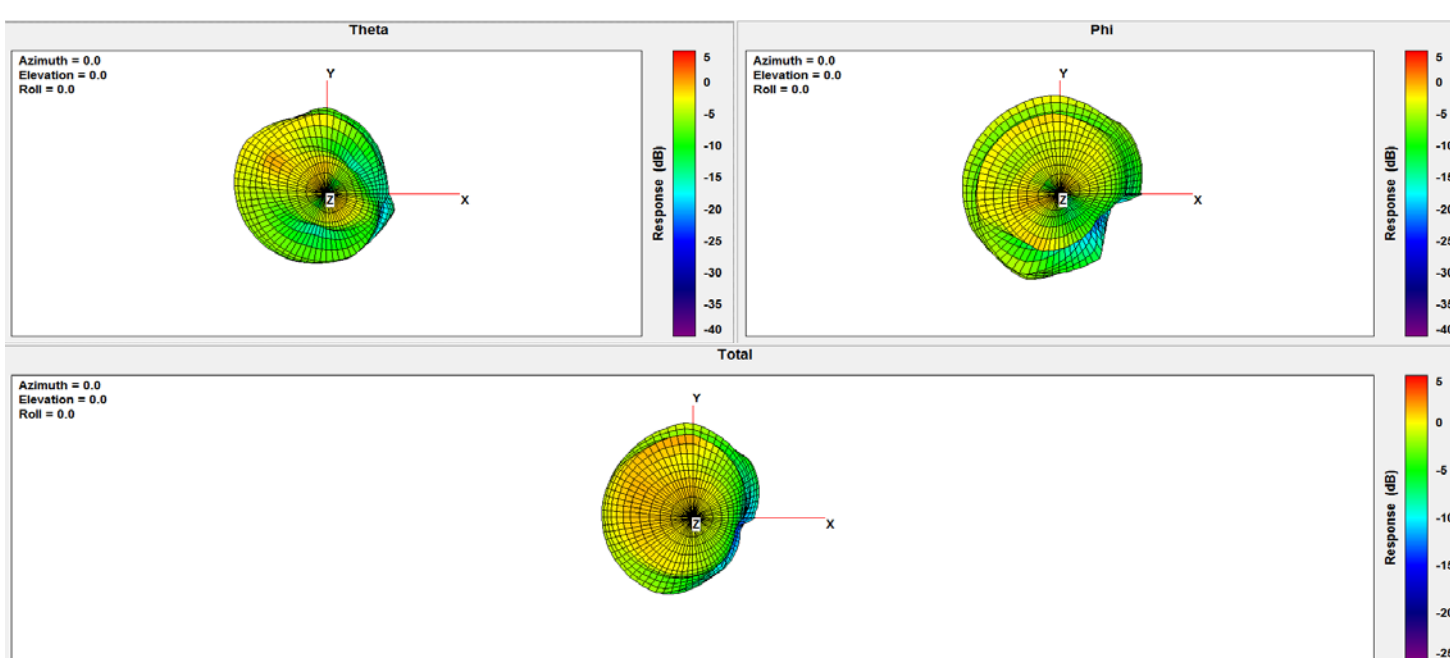
1575Mhz:



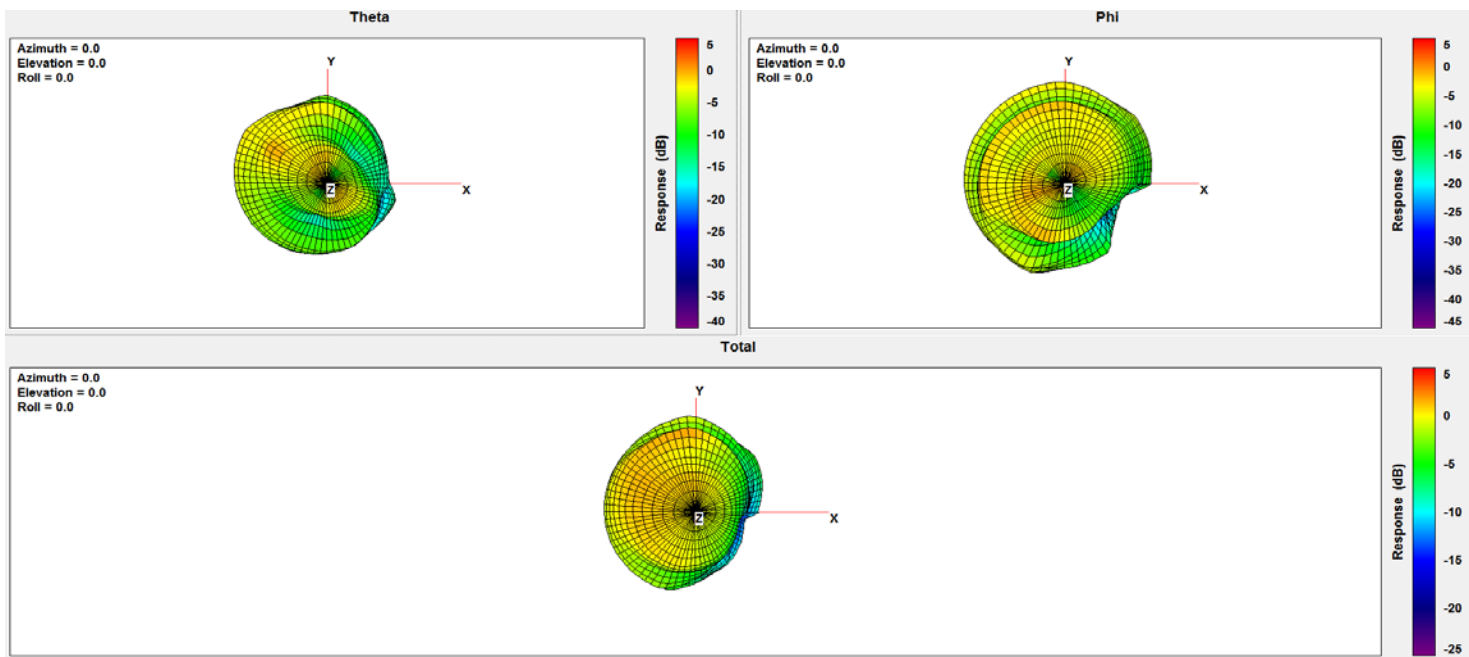
1602Mhz:



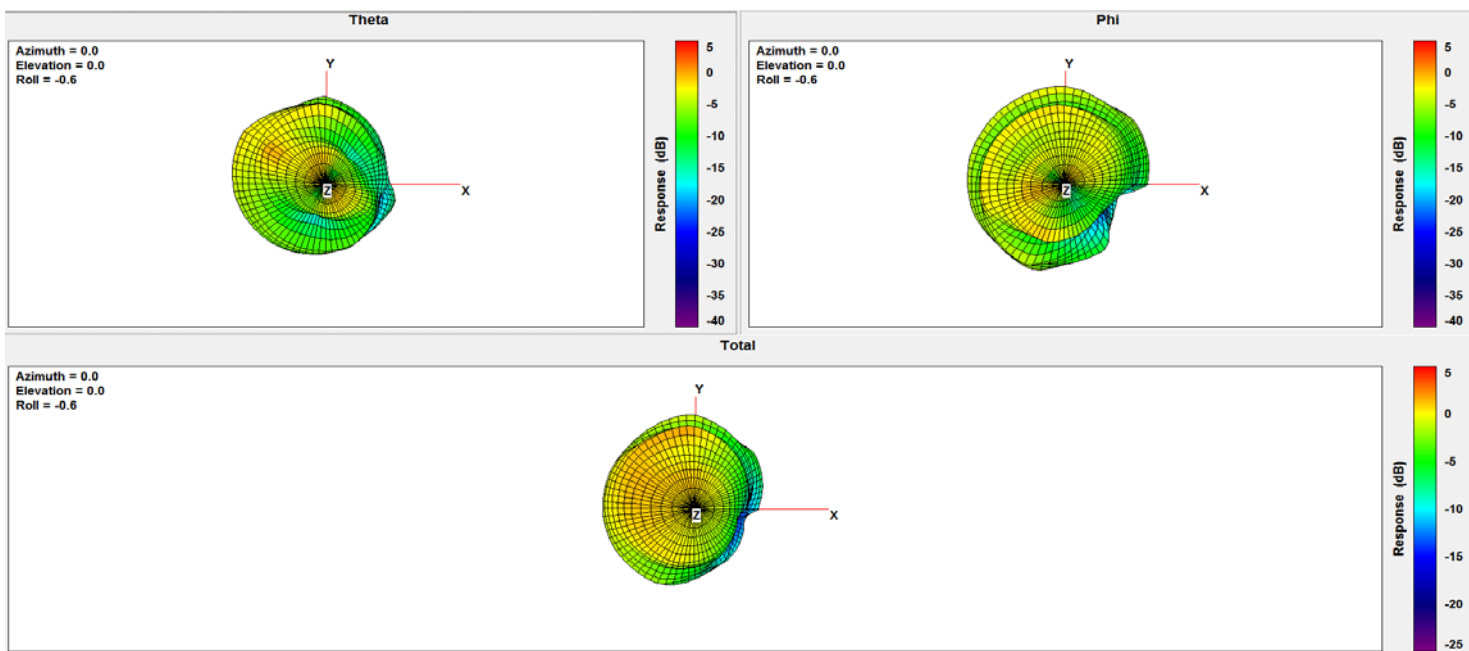
1610Mhz:



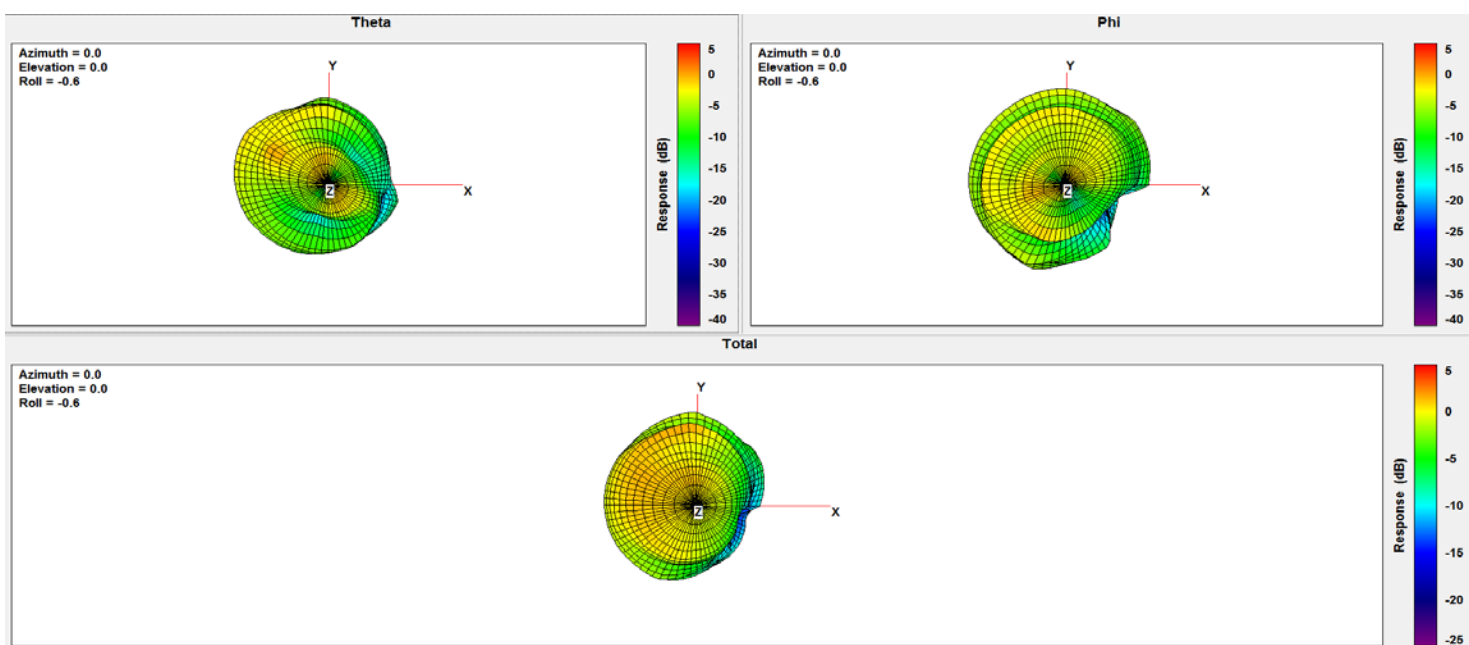
1616Mhz:



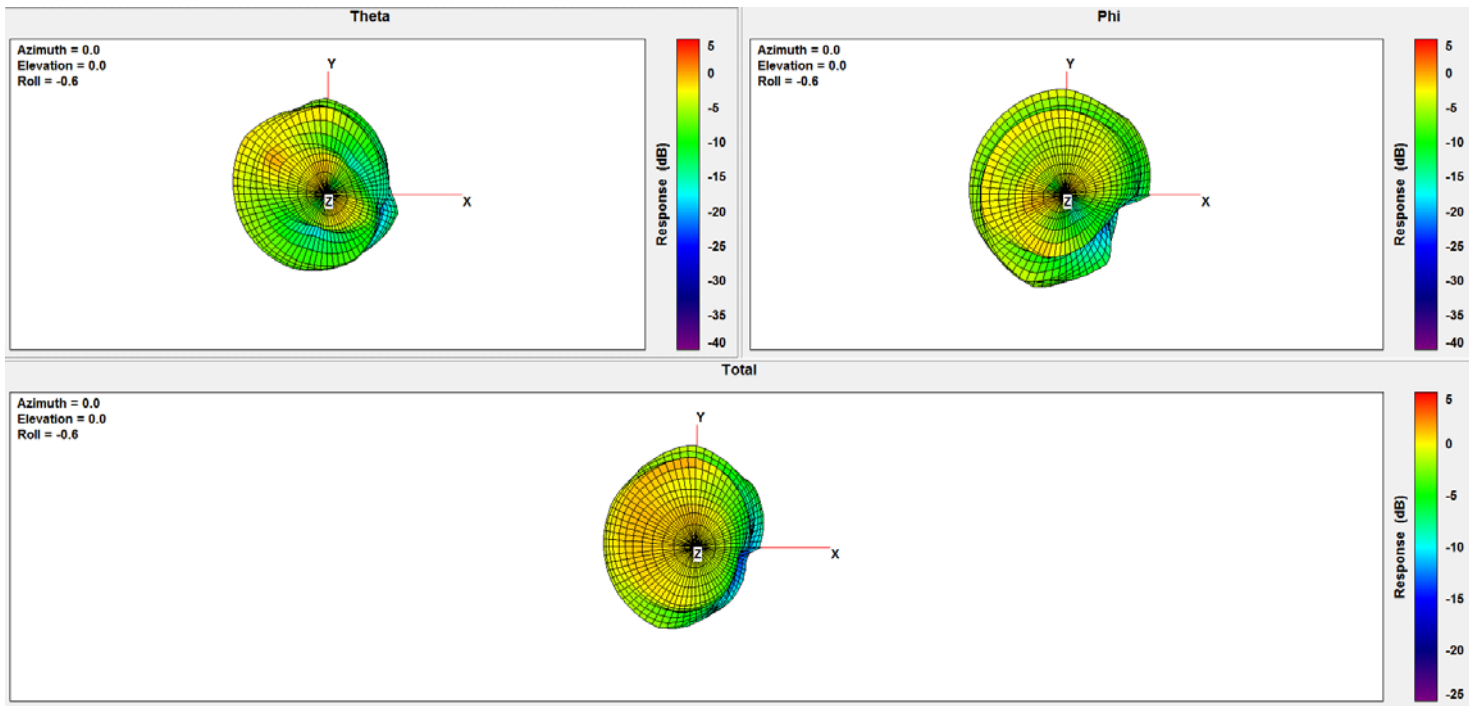
1620Mhz:



1626Mhz:



1630Mhz:



1660Mhz:

