

2.4&5.8G Antenna

MODEL: TH-2458M



1. GENERAL DESCRIPTION

Model No
TH2458M-SMA(M)

Below is a table summarizing the antenna design specification.

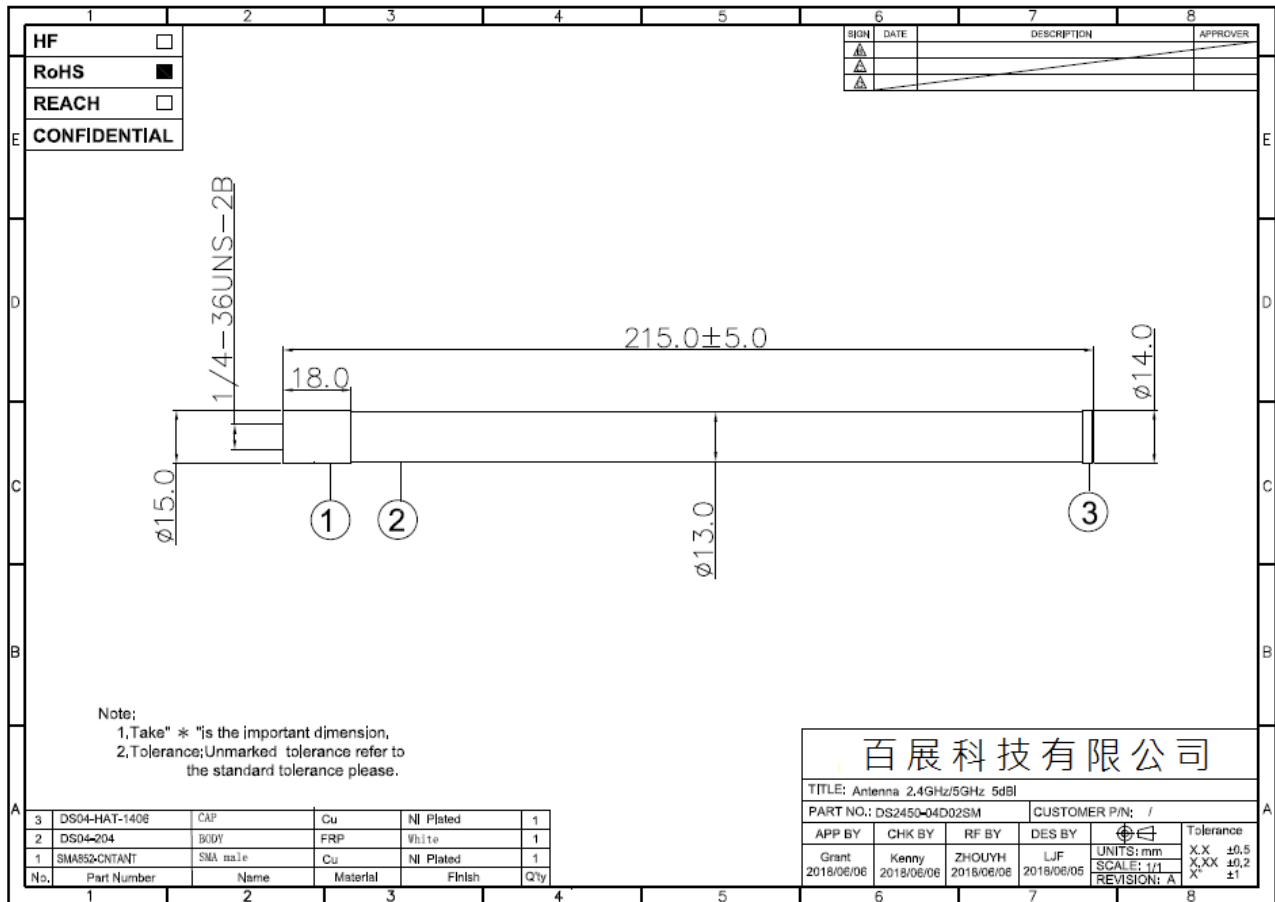
1.1 Electrical Properties

Parameter	Description
Frequency Band	2.4~2.5/5.1~5.85GHz
Nominal Impedance	50 ohm
Polarization	Vertical
Return Loss	Please See Data-1
V.S.W.R	3.0 : 1
Gain	3-5db

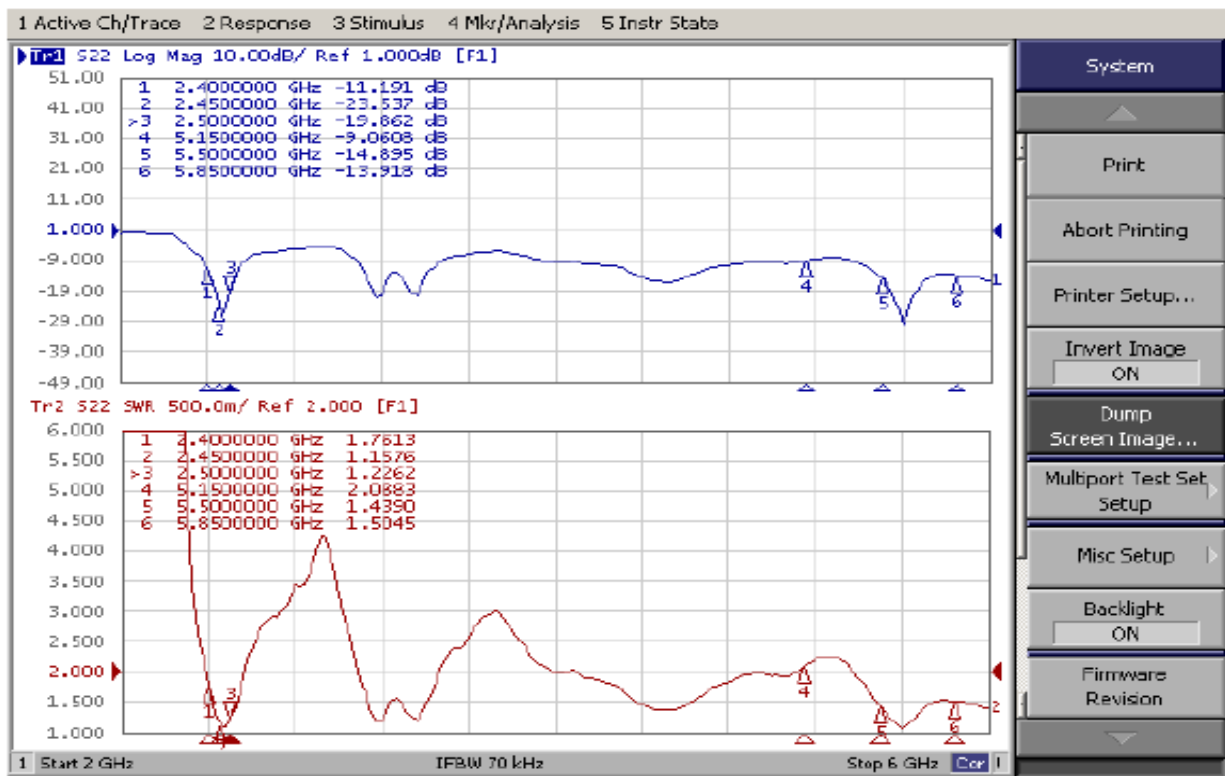
1.2 Mechanical Properties

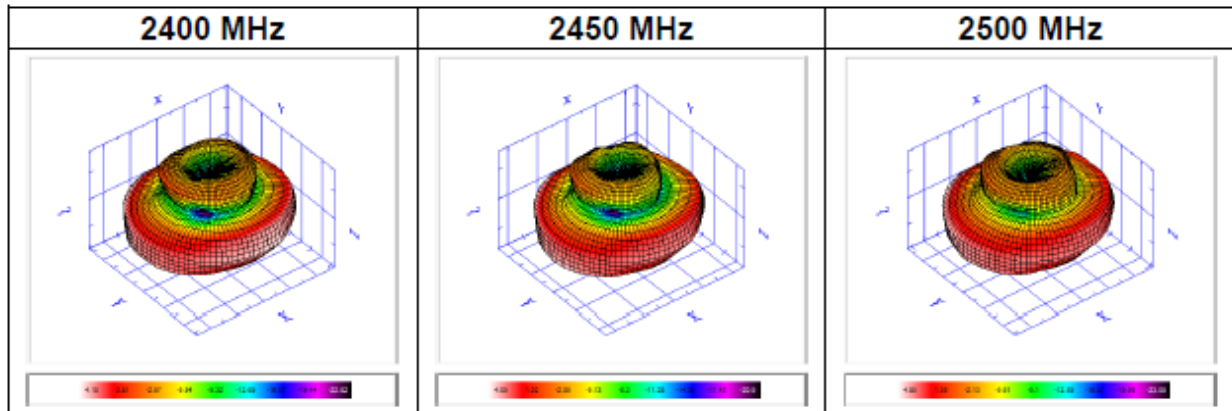
Parameter	Description
Antenna Type	External Antenna
Antenna Material	Glass Fiber
Touch Type	Screw Type
Connector Type	SMA (Male)
Antenna Dimensions	OD15 x 215mm \pm 5
Antenna Color	Black
Operating Temperature Range	-40°C~+80°C
Storage Temperature Range	-40°C~+80°C

2. Appearance

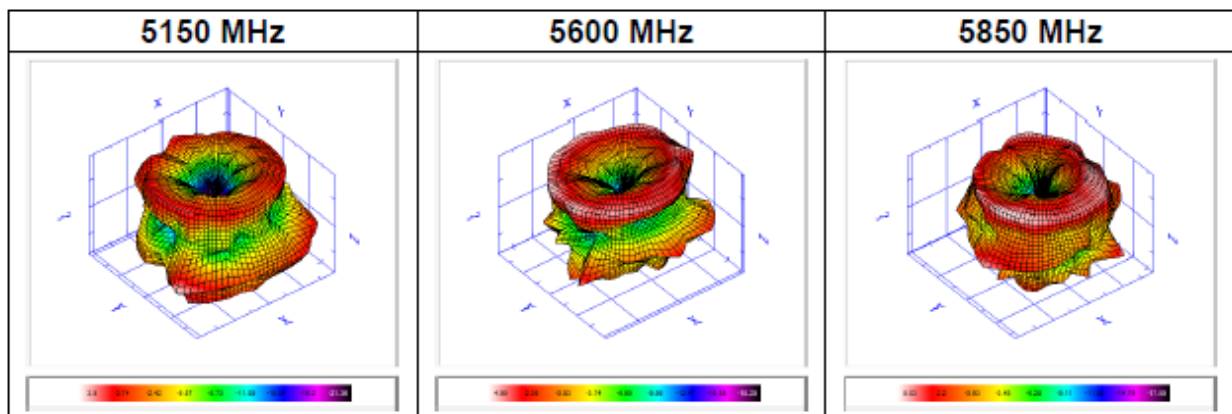


3. Frequency





Frequency	2400	2410	2420	2430	2440	2450	2460	2470	2480	2490	2500
E-Total Peak Gain (dBi)	4.16	4.04	4.35	4.17	3.89	4.09	4.35	4.62	4.92	4.93	4.85
Efficiency (%)	79.72	76.4	81.29	81.18	74.7	74.86	76.91	79.47	85.57	82.47	79.5
Average Gain (dB)	-0.98	-1.17	-0.9	-0.91	-1.27	-1.26	-1.14	-1	-0.68	-0.84	-1



Frequency	5150	5250	5350	5470	5600	5700	5725	5785	5800	5850
E-Total Peak Gain (dBi)	3.9	3.78	4.97	5.33	4.99	4.43	5.46	4.54	5.42	5.03
Efficiency (%)	57.75	60.33	62.49	70.75	67.38	61.28	66.93	73.95	74.59	85.79
Average Gain (dB)	-2.38	-2.19	-2.04	-1.5	-1.71	-2.13	-1.74	-1.31	-1.27	-0.67