

# RFID/Sigfox/ISM/LoRo UHF Passive Antenna

## MODEL: TH-900J



### 1.. GENERAL DESCRIPTION

Model No	P/N
TH-900J	TH900J-SMA(M)

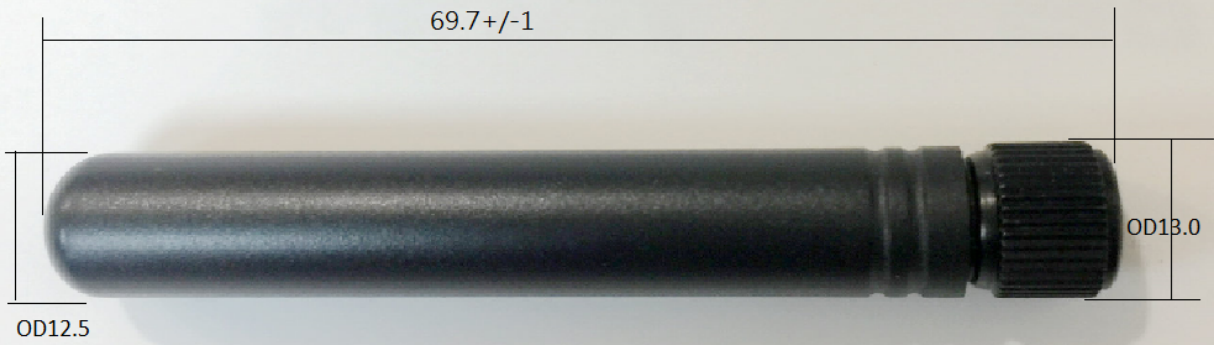
### 1.1 Electrical Properties



Parameter	Description
Frequency Band	698~960GHz
Nominal Impedance	50 ohm
Polarization	Vertical
Electrical Wave	1 /4 $\lambda$
Admitted Power radiation	1W
V.S.W.R	3.0:1 Max
Antenna Gain	0~1.5 dB

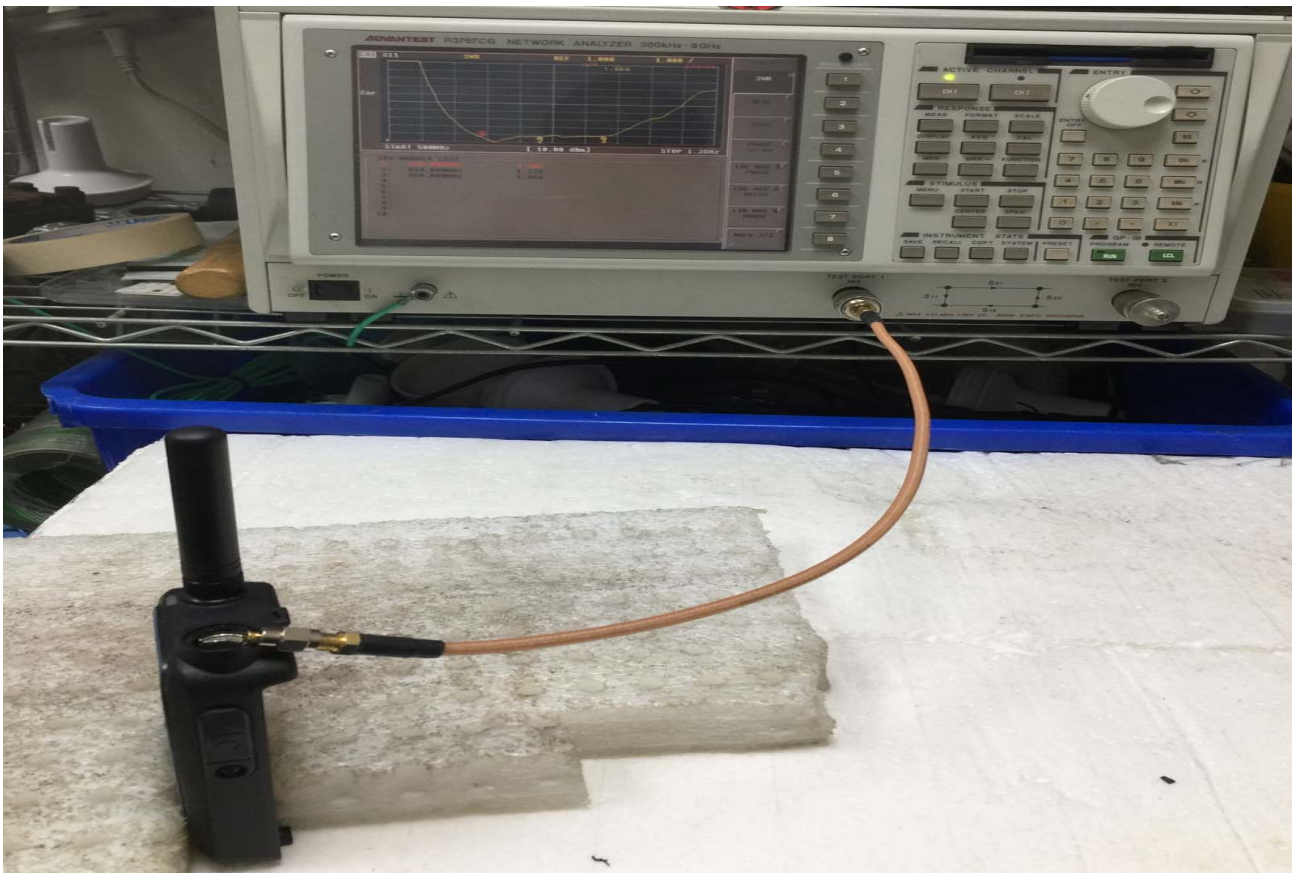
### 1.2 Mechanical Properties

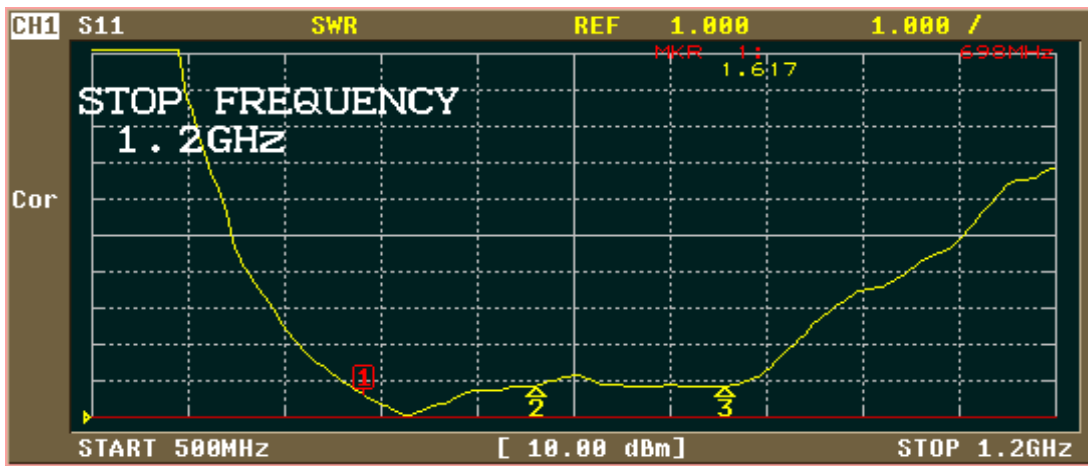
Parameter	Description
Antenna Type	External Antenna
Material	ASA-UV (UL94-HB)
Touch Type	Screw Type
Connector Type	SMA (Male)
Antenna Dimensions	OD12.5 x 69.7mm $\pm$ 1
Antenna Color	Black
Operating Temperature Range	-40°C~+80°C
Storage Temperature Range	-40°C~+80°C
Waterproof	IPX7 (Must match the silicone pad - optional)

NO.	NAME	Q, TY
01	ASA-UV Tube	01
02	SMA(M)	01



 Third angle projection	CUSTOMER'S	MODEL	PARTS NUMBER	FREQUENCY	UNIT	SCALE	DATE	VERSION
			TH-900J			M/M		20190805
	TOLERANCE	X. XX±0. 15	NAME	PARTS NUMBER	APPROVED	CHECKED	DRAWING	DESIGNED
	SURFACE ROUGHNESS		APPEARANCE					





CAL MENU

1 PORT FULL CAL

2 PORT CAL MENU

AUTO CAL

CLEAR CAL DATA

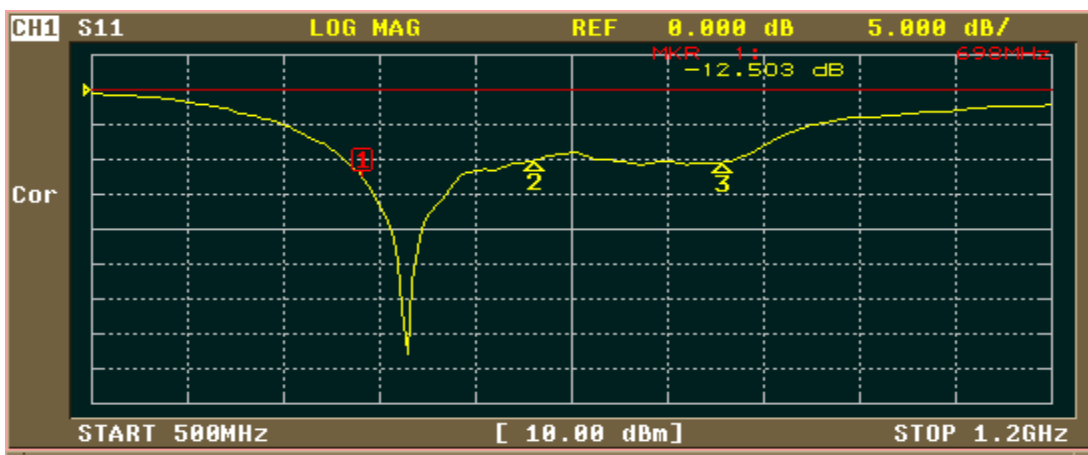
CAL KIT

N(50Ω)

Return

CH1 MARKER LIST

1:	698.000MHz	1.617
2:	824.000MHz	1.893
3:	960.000MHz	1.856
4:		
5:		
6:		
7:		
8:		
9:		
10:		



FORMAT

LOG MAG

PHASE

DELAY

SMITH (R+jX)

SMITH (G+jB)

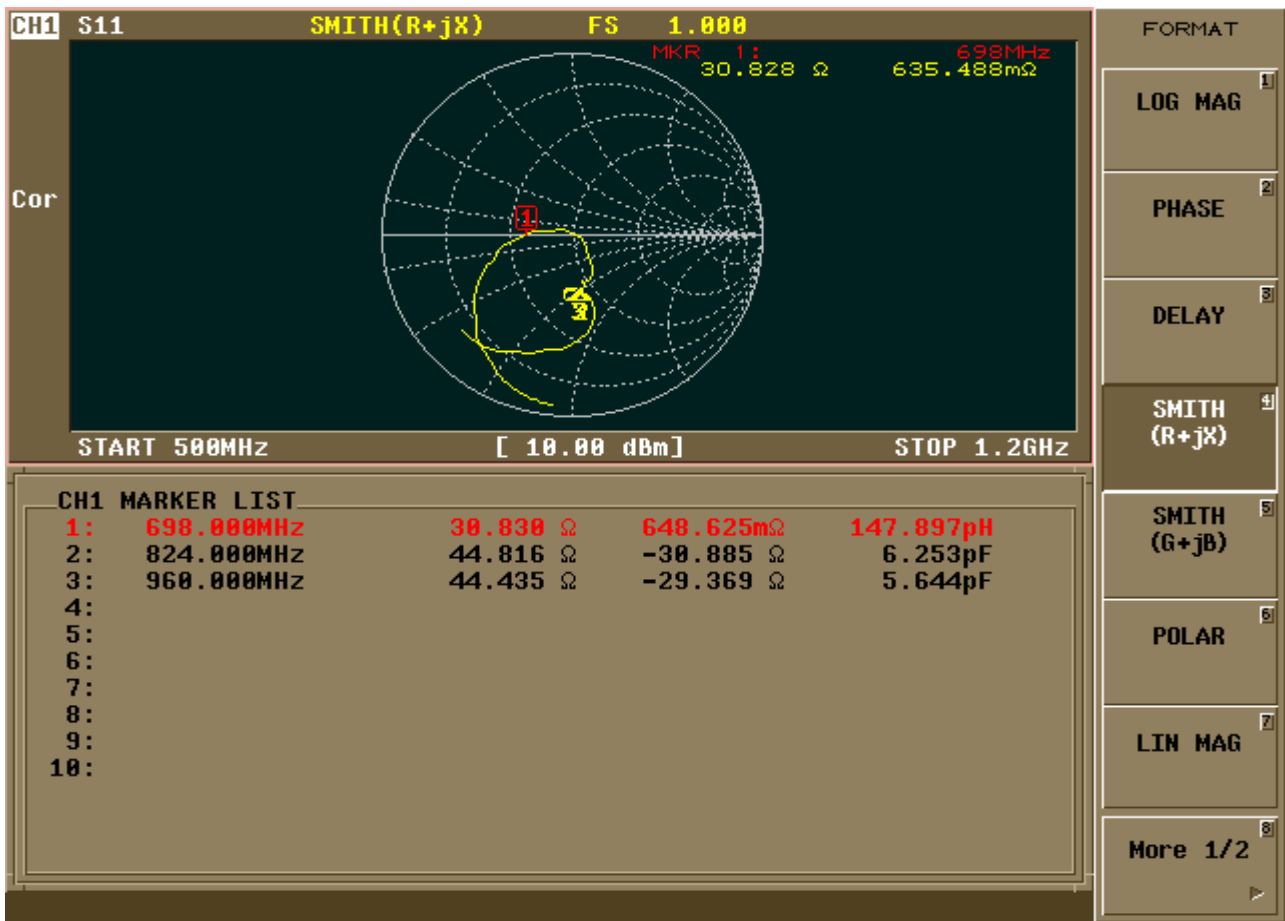
POLAR

LIN MAG

More 1/2

CH1 MARKER LIST

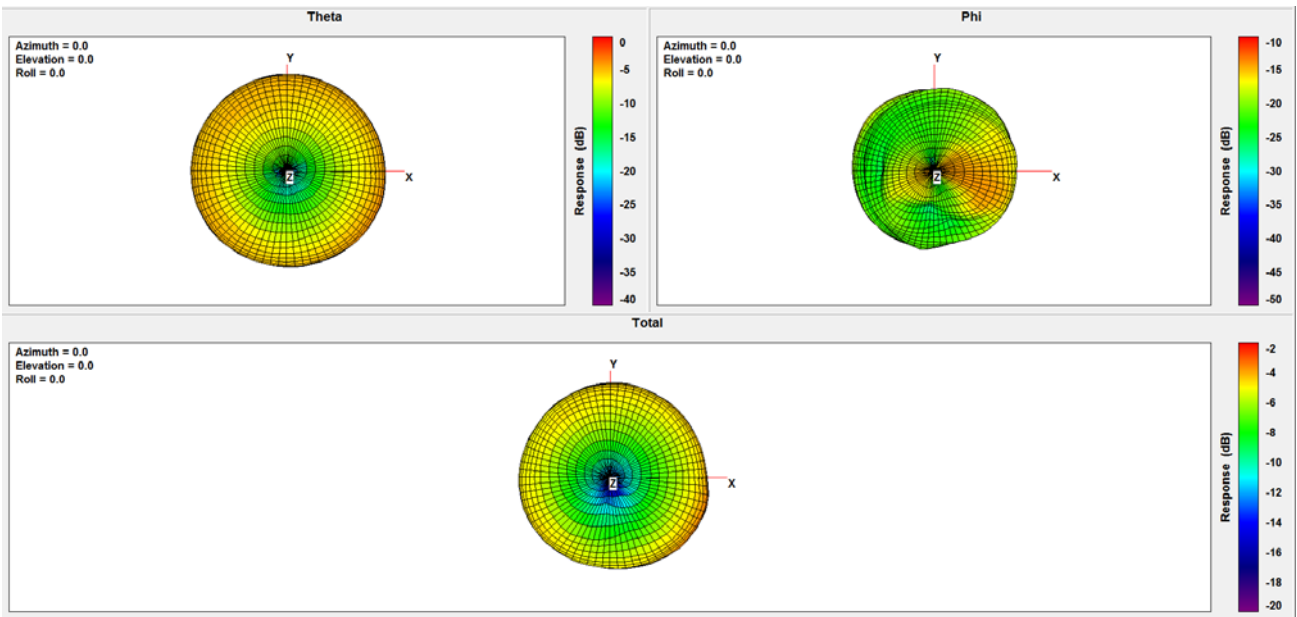
1:	698.000MHz	-12.503 dB
2:	824.000MHz	-10.029 dB
3:	960.000MHz	-10.402 dB
4:		
5:		
6:		
7:		
8:		
9:		
10:		



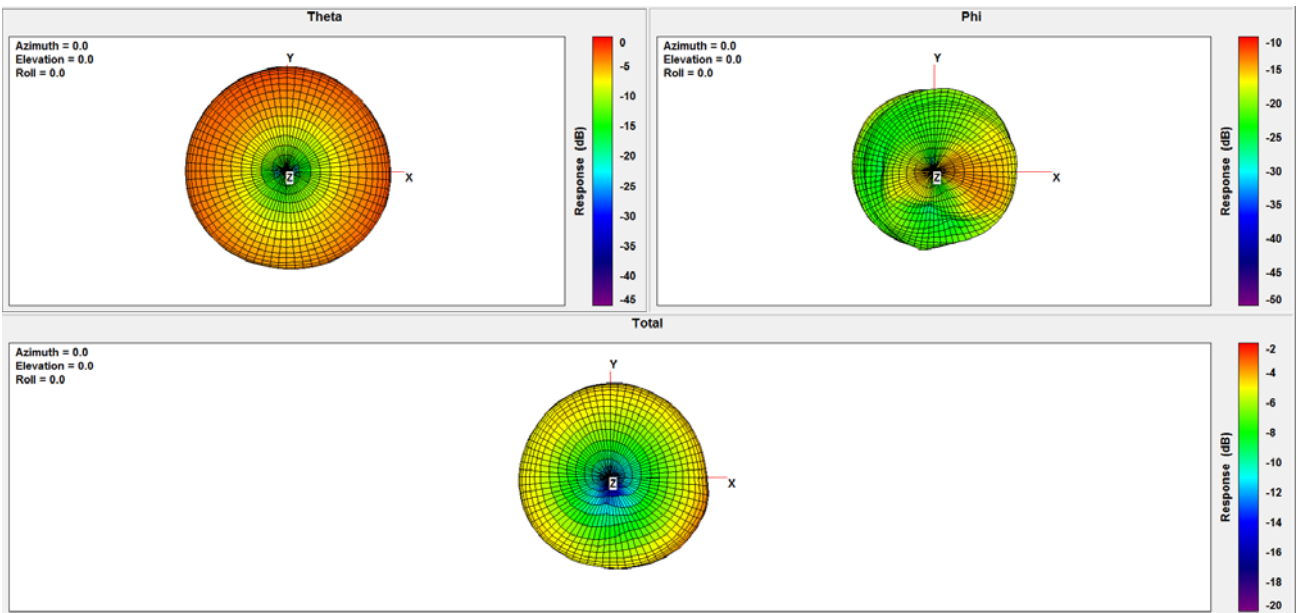
Frequency (MHz)	698	704	710	716	720	725	730	734	740	746	756	765
Peak Gain (dBi)	1.75	1.81	1.62	1.32	1.27	1.32	1.32	1.25	1.18	0.92	0.81	0.74
Efficiency (%)	60.47	62.70	62.57	62.80	62.38	61.63	60.86	59.83	58.45	56.74	57.20	56.64
Frequency (MHz)	772	777	782	787	791	806	821	824	836	849	862	869
Peak Gain (dBi)	0.76	0.74	0.76	0.68	0.61	0.48	0.63	0.64	0.84	1.11	1.31	1.38
Efficiency (%)	55.70	55.02	54.94	54.15	53.43	50.25	50.15	50.37	51.28	53.44	53.36	52.23

Frequency (MHz)	880	894	900	915	925	940	960					
Peak Gain (dBi)	1.43	1.15	1.08	0.99	0.94	0.94	0.73					
Efficiency (%)	51.73	49.47	48.91	48.11	47.58	47.88	46.45					

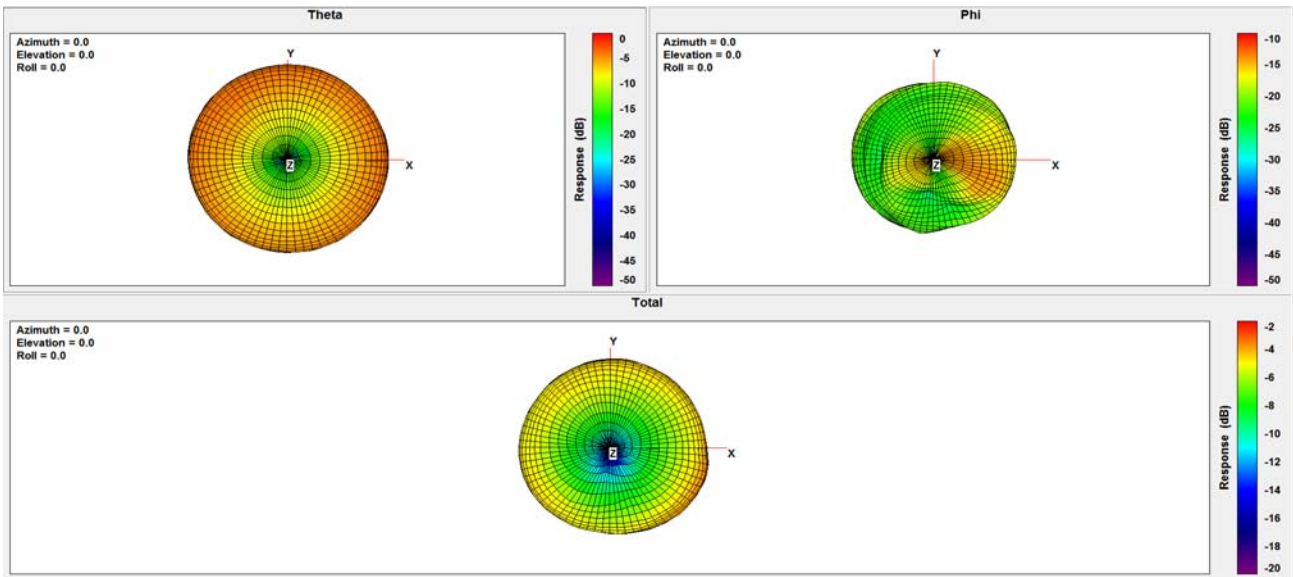
**698Mhz:**



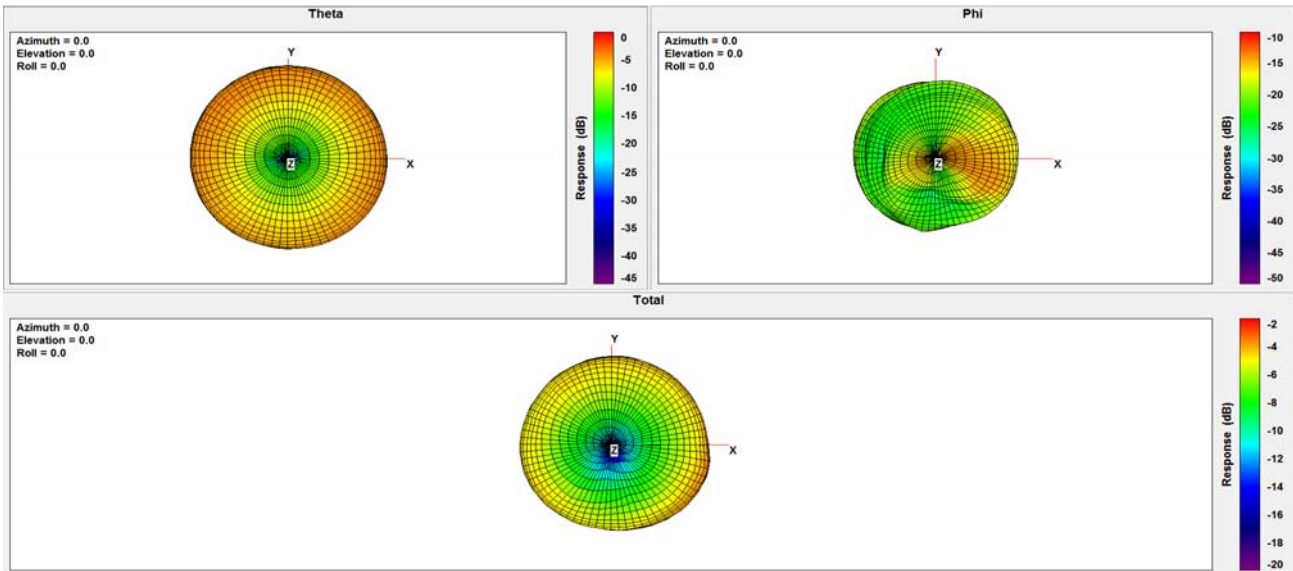
**756Mhz:**



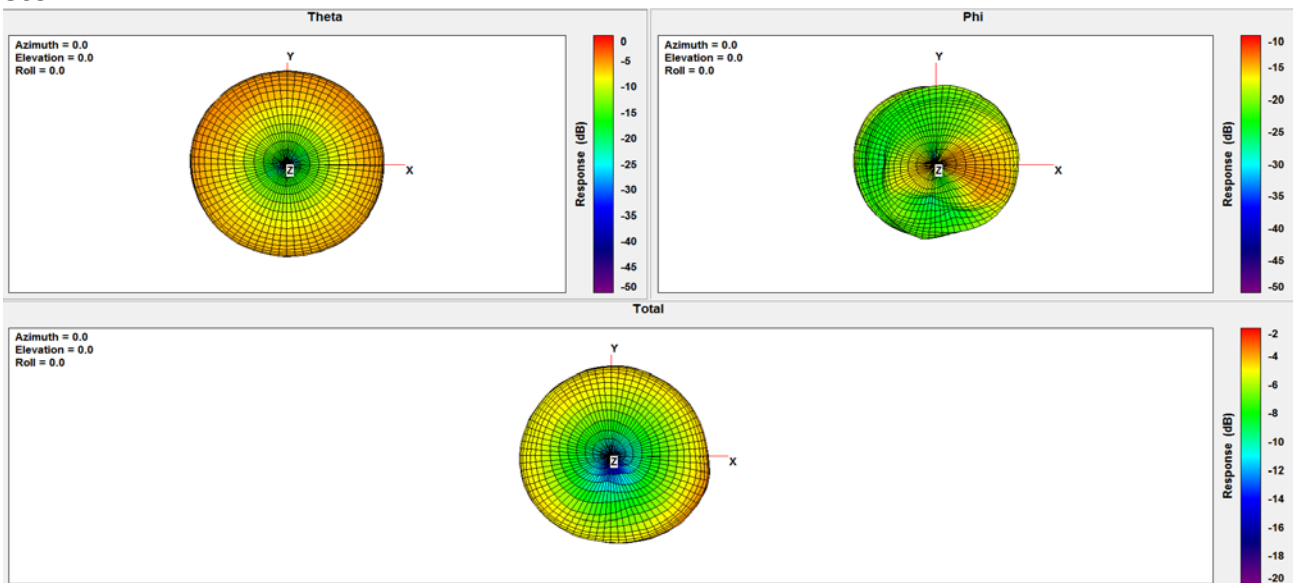
### 806Mhz:



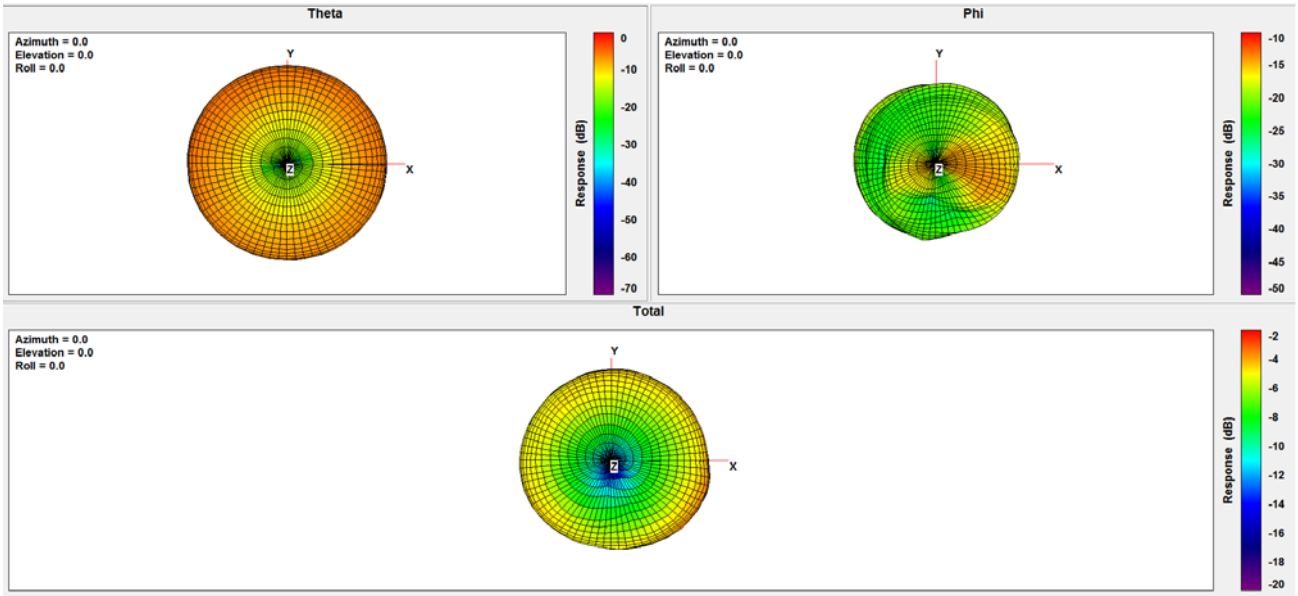
### 824Mhz:



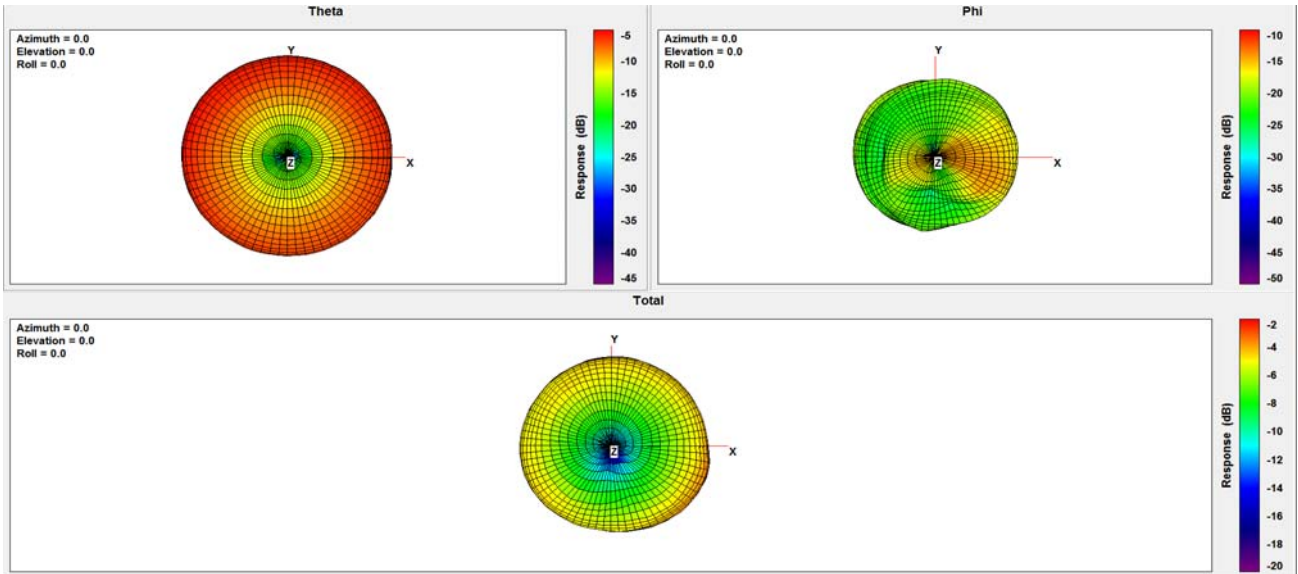
### 869Mhz:



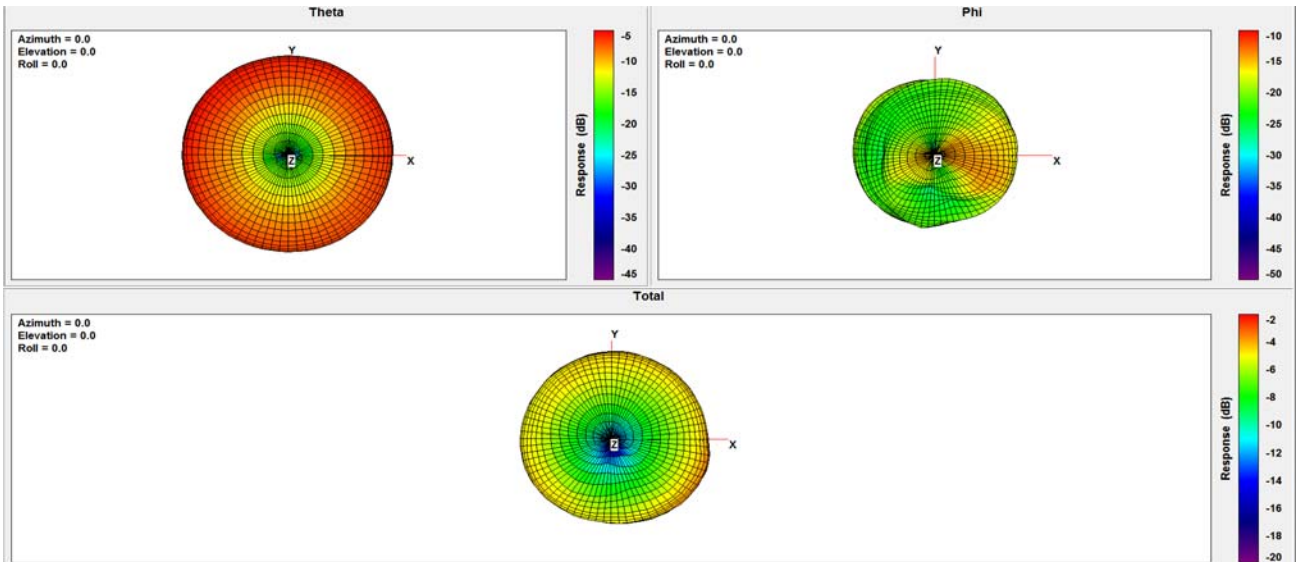
### 900Mhz:



### 915Mhz:



### 925Mhz:



# 960Mhz:

