

Outdoor Omni 2.4G & S Band Antenna

MODEL: TH-2527

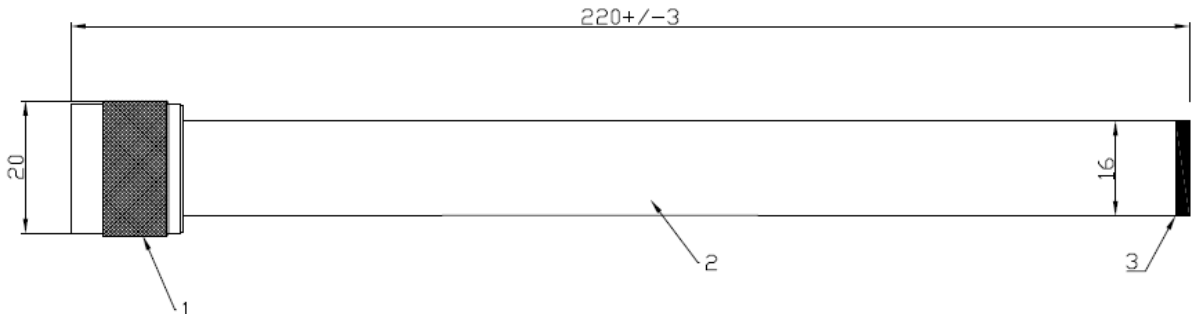


1. Electrical Properties

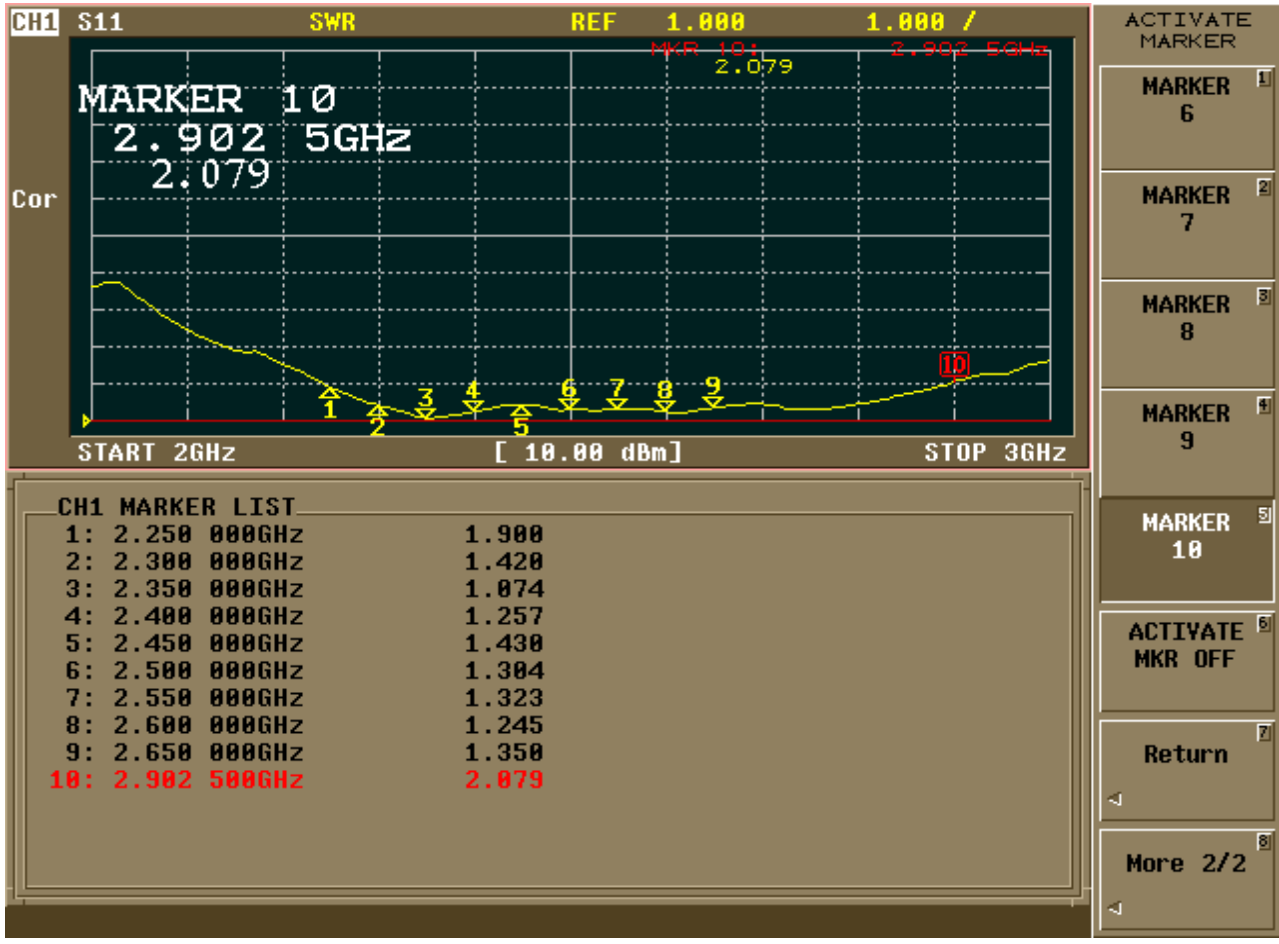
Parameter	Description
Frequency Band	2250-2900Mhz
Nominal Impedance	50 ohm
Polarization	Vertical
Electrical Wave	Dipole
Return Loss	Please See Data-1
V.S.W.R	2.0:1
Antenna Peak Gain	5dBi

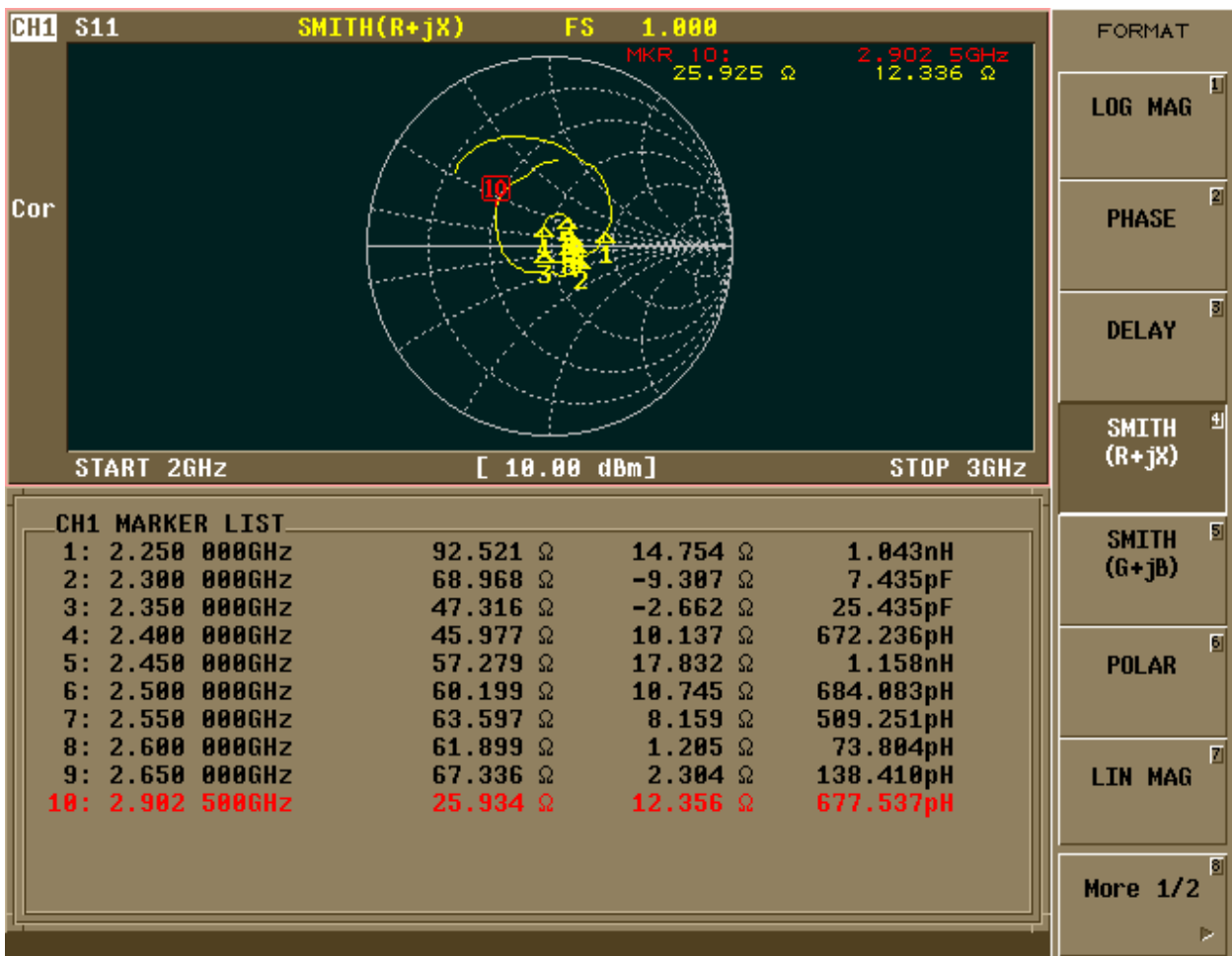
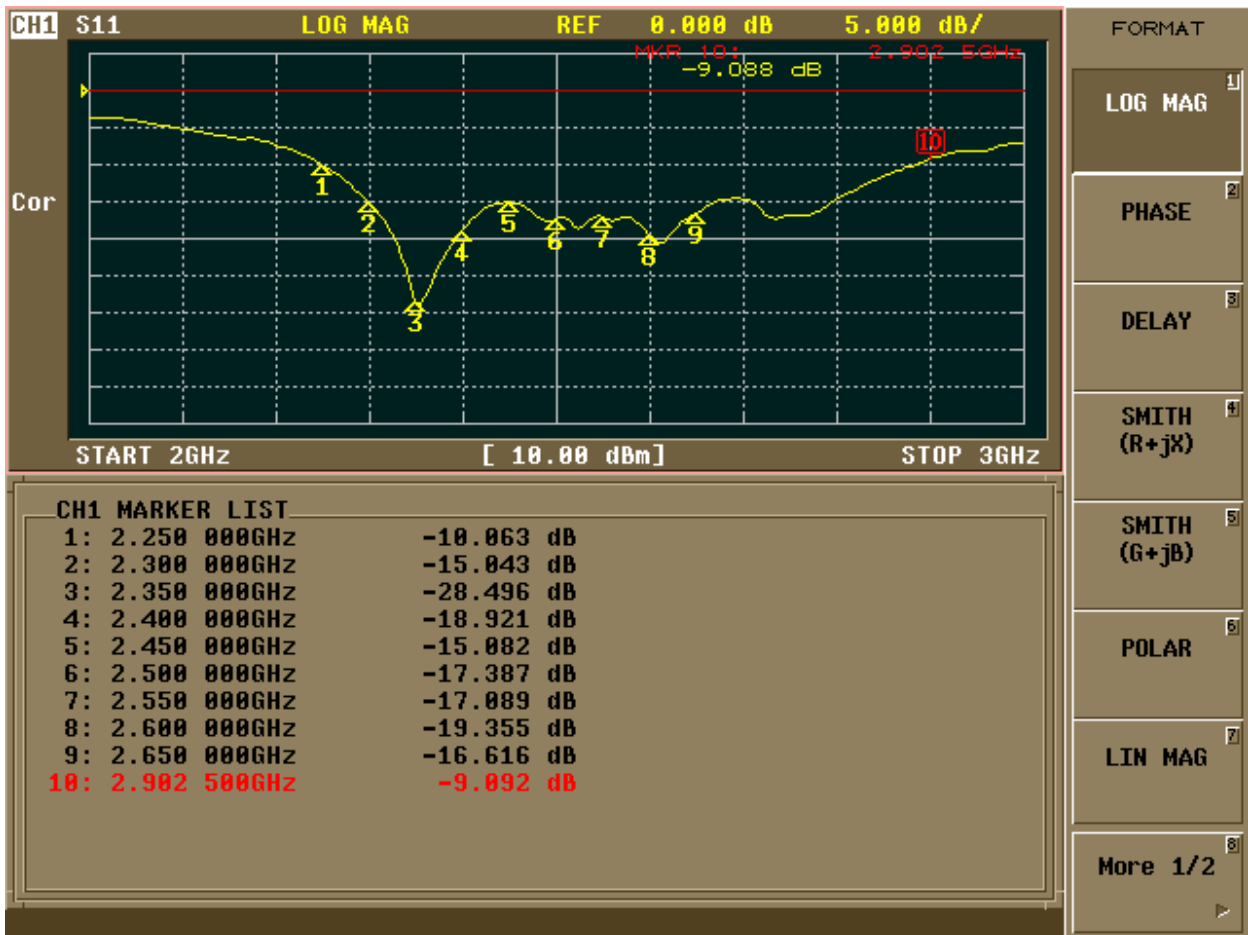
2. Mechanical Properties

Parameter	Description
Antenna Type	External Antenna
Connector Type	N(M)
Antenna Dimensions	220 mm \pm 3
Antenna Color	ASA-UV-Black
Operating Temperature Range	-40°C~+80°C
Storage Temperature Range	-40°C~+80°C
Waterproof	IPX7



6					百展科技有限公司	TEL: 886-2-86720160
5					BJTEK NAVIGATION INC	FAX: 886-2-86720161
4					TITLE: 2.4G Antenna DWG NO.: TH-2400F-X(0)	
3	ASA Black cap				TOLERANCE: AS SPEC.	FINISH: SEE TABLE
2	ASA Black tube				DATE: 2020.01.03	UNIT: MM
1	NCM Connector				MATERIAL: SEE TABLE	ISSUED: BILL
	ITEM DESCRIPTION	MAT'L	FINISH	ITEM No.	DRAWN: ALAN	CHECKED: LOUIS

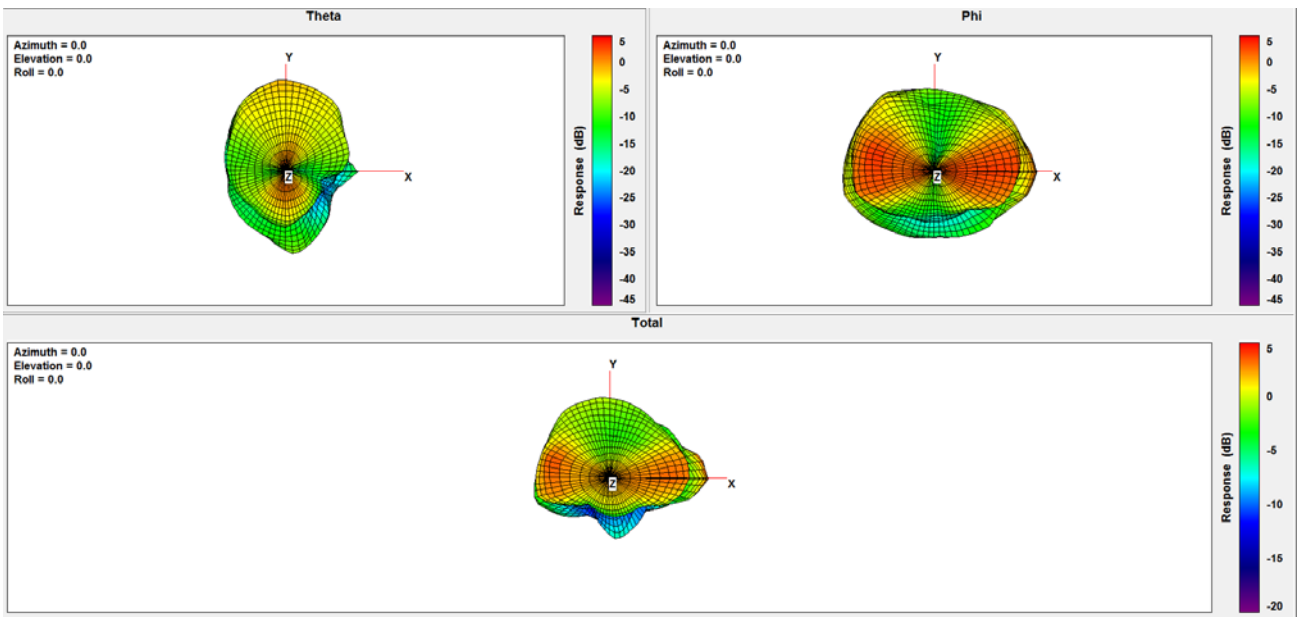




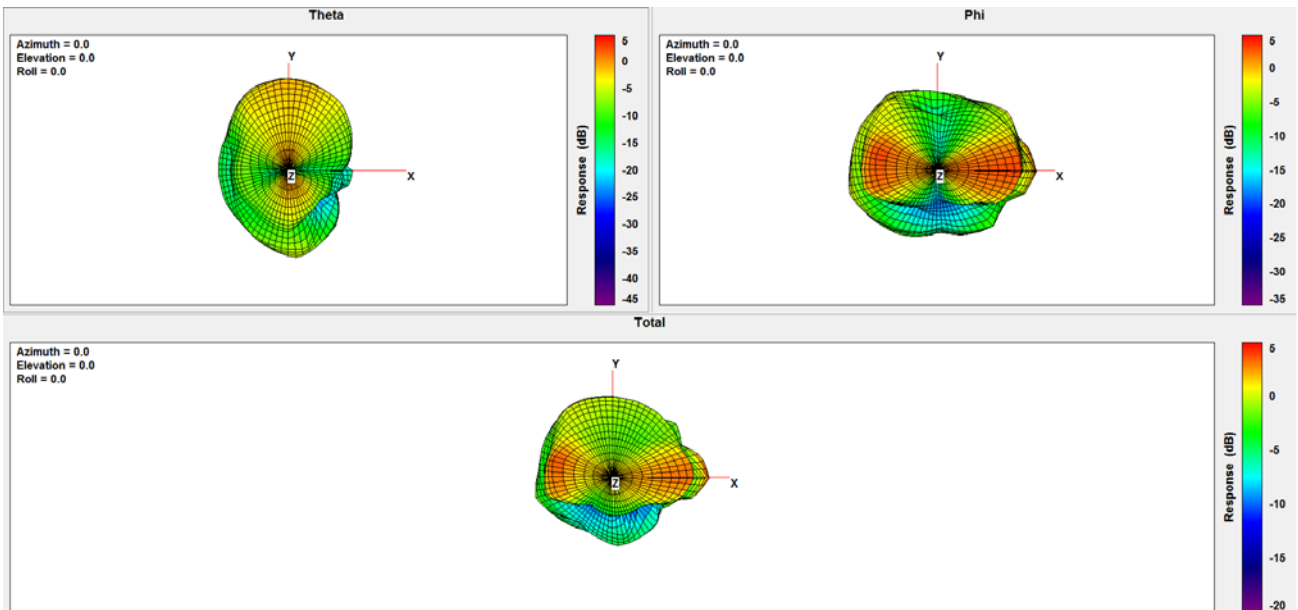
Test result:

Frequency (MHz)	2250	2300	2350	2400	2450	2500	2550	2575	2600	2625	2650	2700	2800	2900
Peak Gain (dBi)	4.72	4.55	3.12	2.63	2.11	2.82	3.54	3.87	3.91	4.05	3.93	3.39	2.51	2.11
Efficiency (%)	62.22	66.20	66.39	62.98	56.64	58.60	59.57	57.75	55.76	54.73	52.89	48.80	44.04	42.43

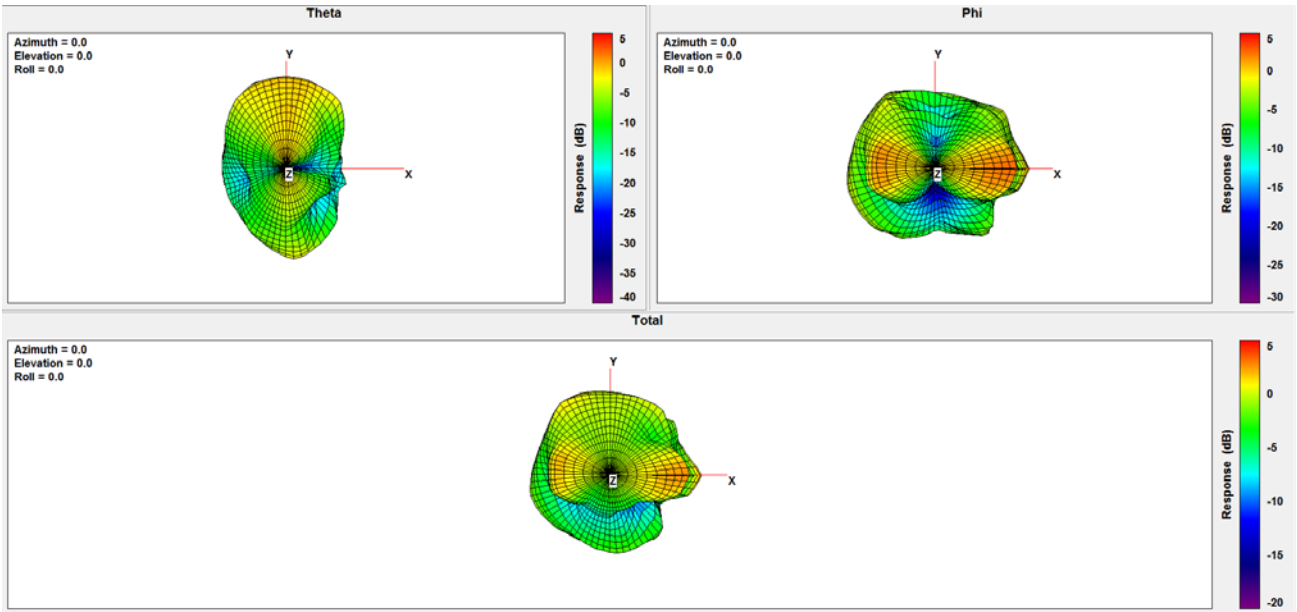
2.25G:



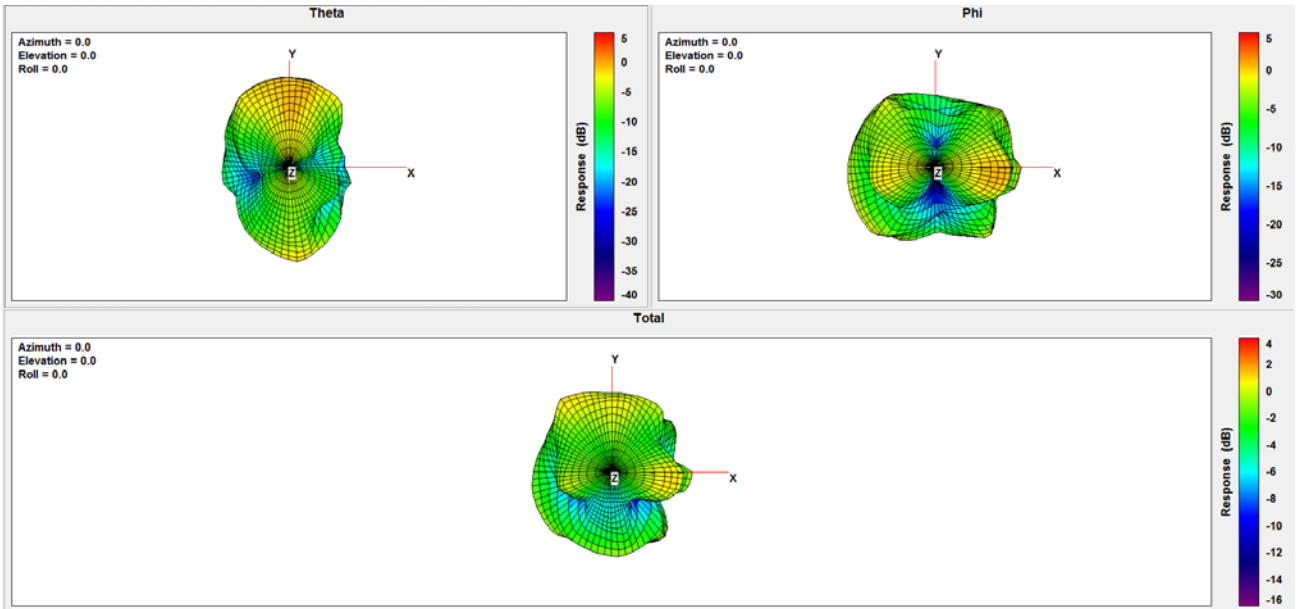
2.3G:



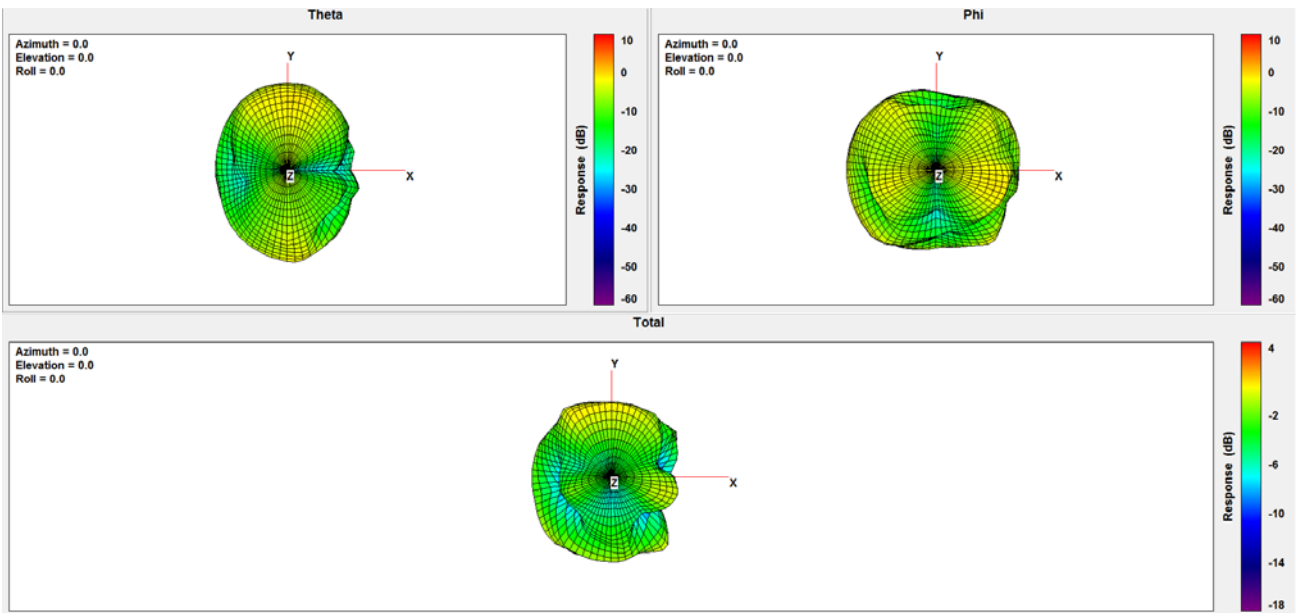
2.35G:



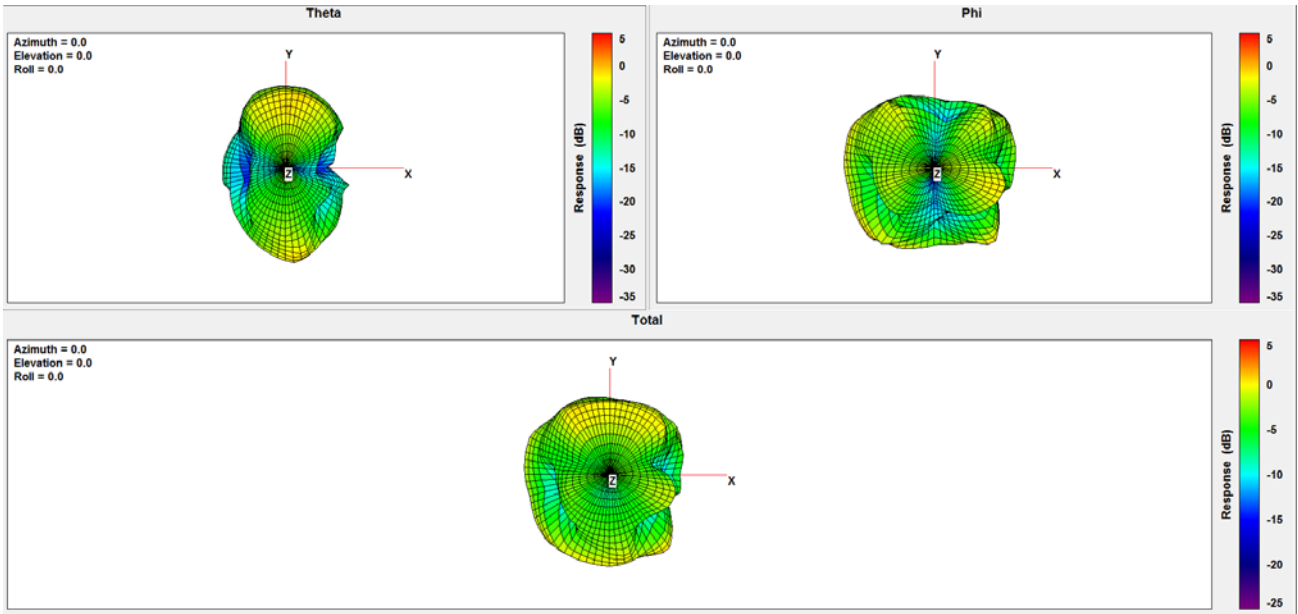
2.4G:



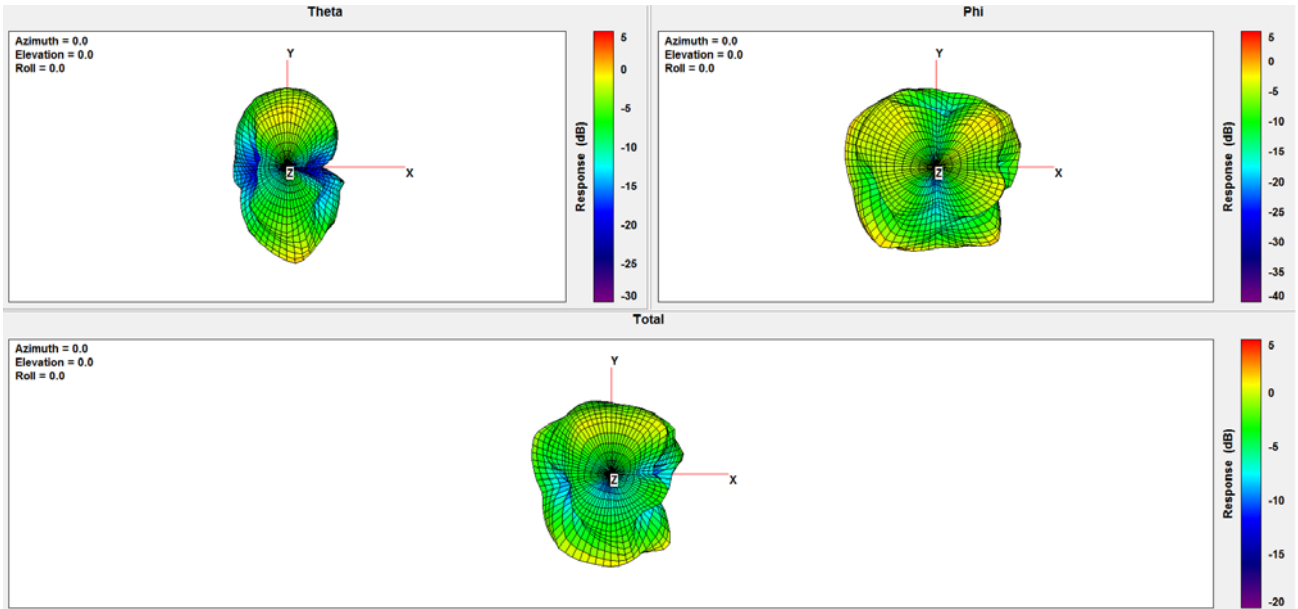
2.45G:



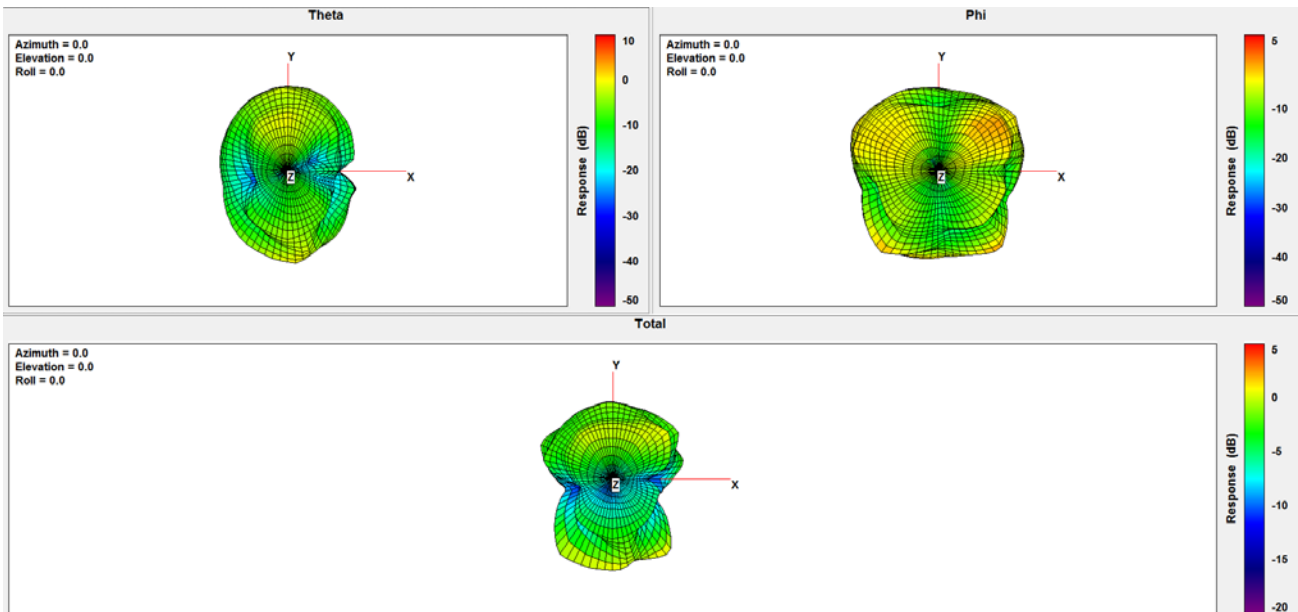
2.5G:



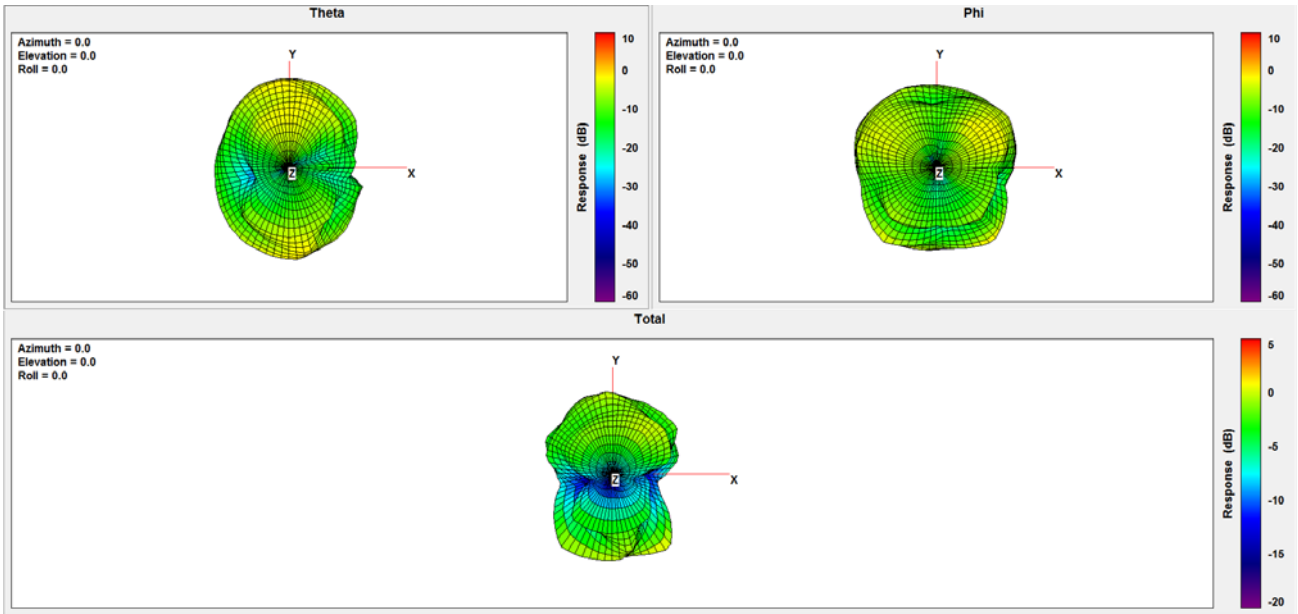
2.55G:



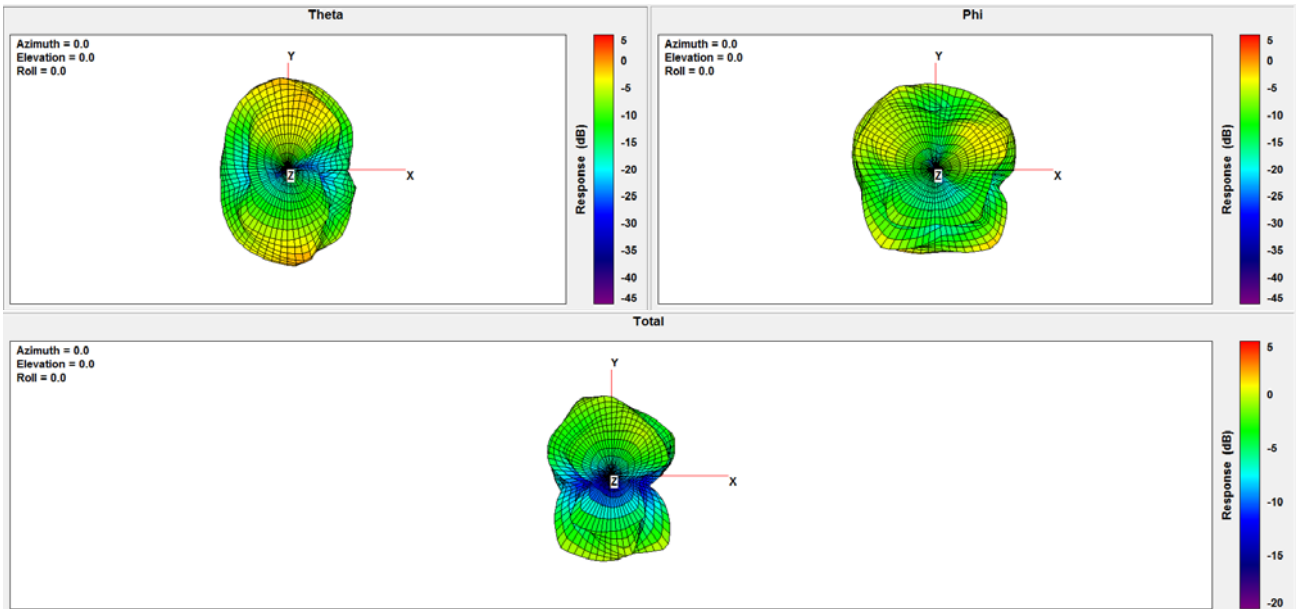
2.6G:



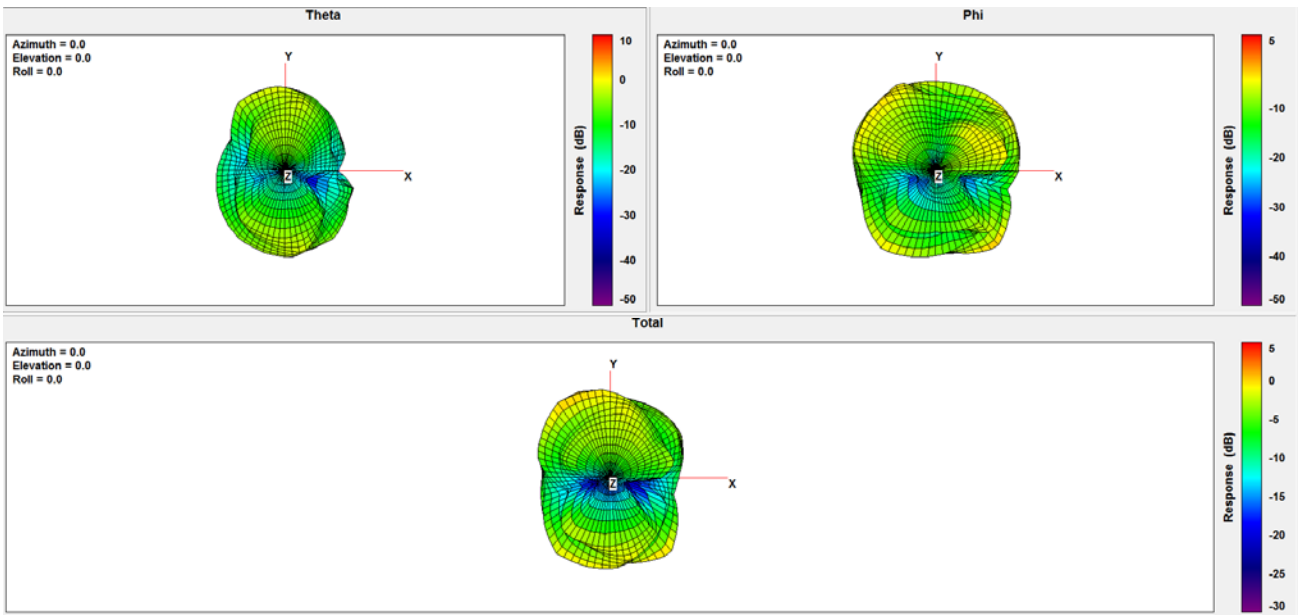
2.65G:



2.7G:



2.8G:



2.9G:

