

# Outdoor Omni 4.5G Antenna

## MODEL: TH-4500

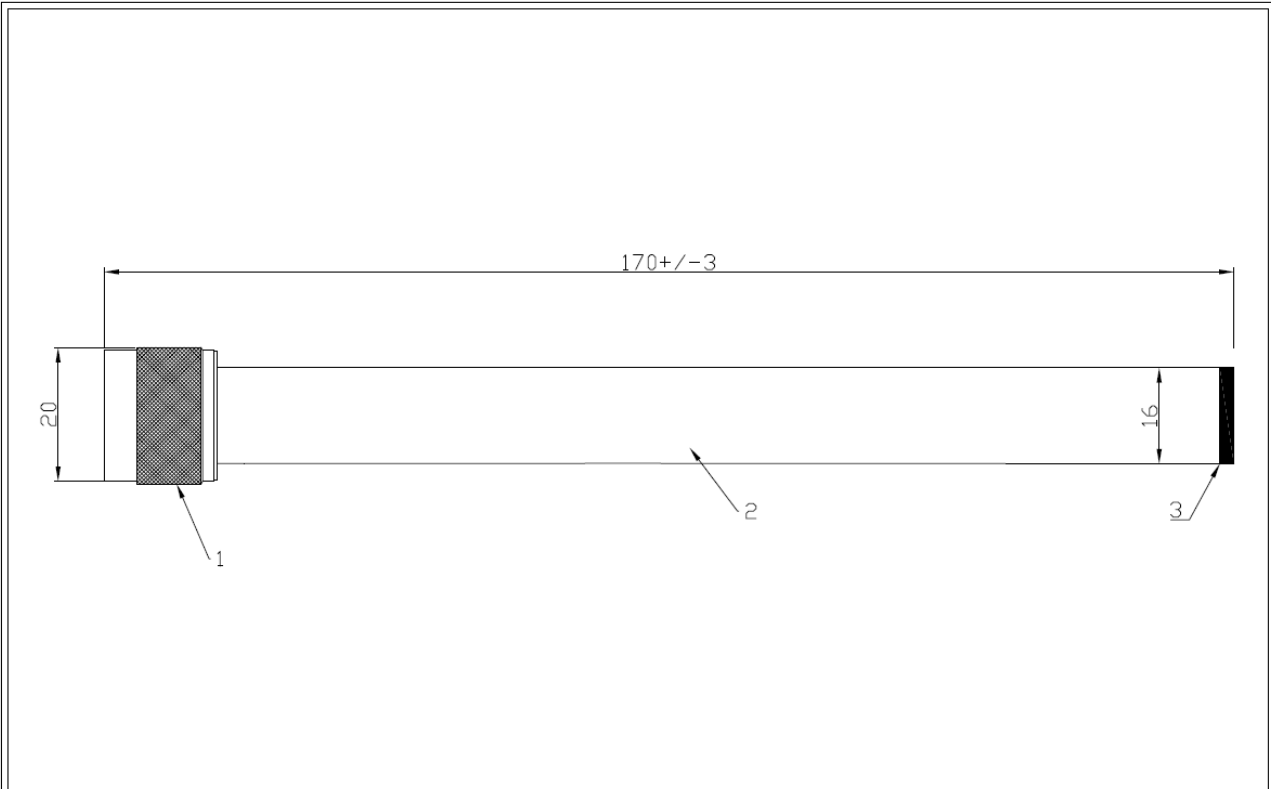


### 1. Electrical Properties

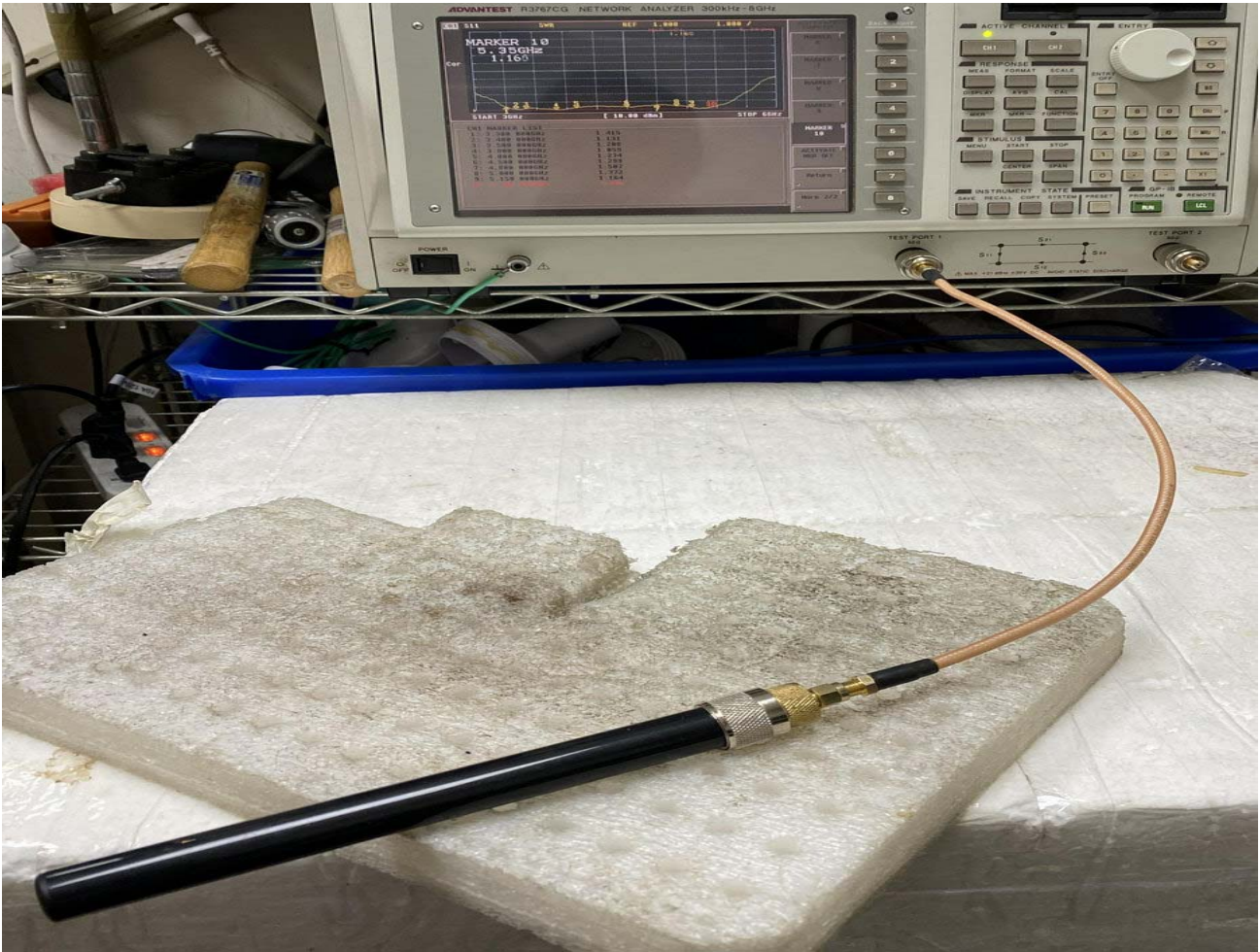
Parameter	Description
Frequency Band	3300-5350Mhz
Nominal Impedance	50 ohm
Polarization	Vertical
Electrical Wave	Dipole
Return Loss	Please See Data-1
V.S.W.R	2.0:1
Antenna Peak Gain	2~5 DBI

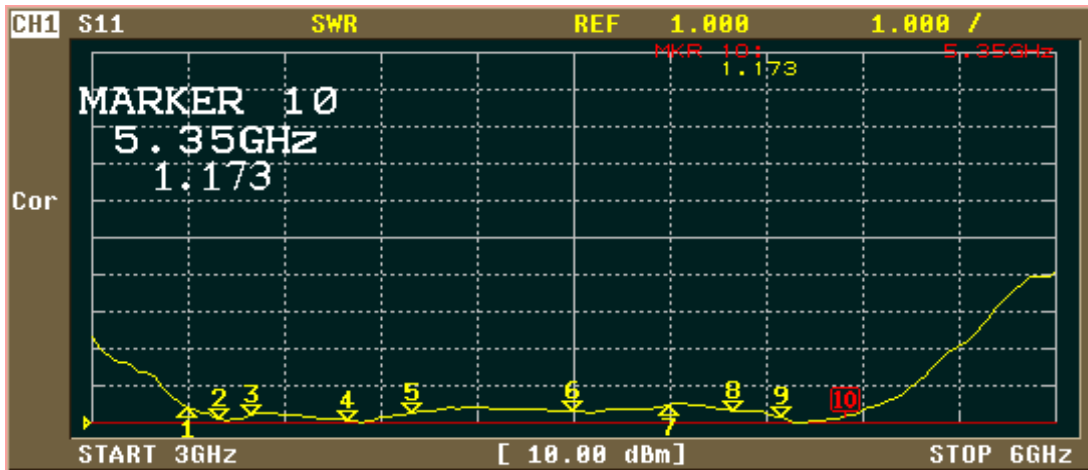
### 2. Mechanical Properties

Parameter	Description
Antenna Type	External Antenna
Connector Type	N(M)
Antenna Dimensions	170 mm $\pm$ 3
Antenna Color	ASA-UV-Black
Operating Temperature Range	-40°C~+80°C
Storage Temperature Range	-40°C~+80°C
Waterproof	IPX7



6									
5									
4									
3	ASA Black cap								
2	ASA Black tube								
1	N(M) Connector								
ITEM	DESCRIPTION	MAT'L	FINISH	ITEM No.	百展科技有限公司 BJTEK NAVIGATION INC		TEL: 886-2-86720160 FAX: 886-2-86720161		
					TITLE: 5.8G Antenna		DWG NO.: TH-5800-(NM)		
					TOLERANCE: AS SPEC.	FINISH: SEE TABLE	DATE: 2020.01.03	UNIT: MM	
					MATERIAL: SEE TABLE	ISSUED: BILL	DRAWN: ALAN	CHECKED: LOUIS	





ACTIVATE MARKER

MARKER 6

MARKER 7

MARKER 8

MARKER 9

MARKER 10

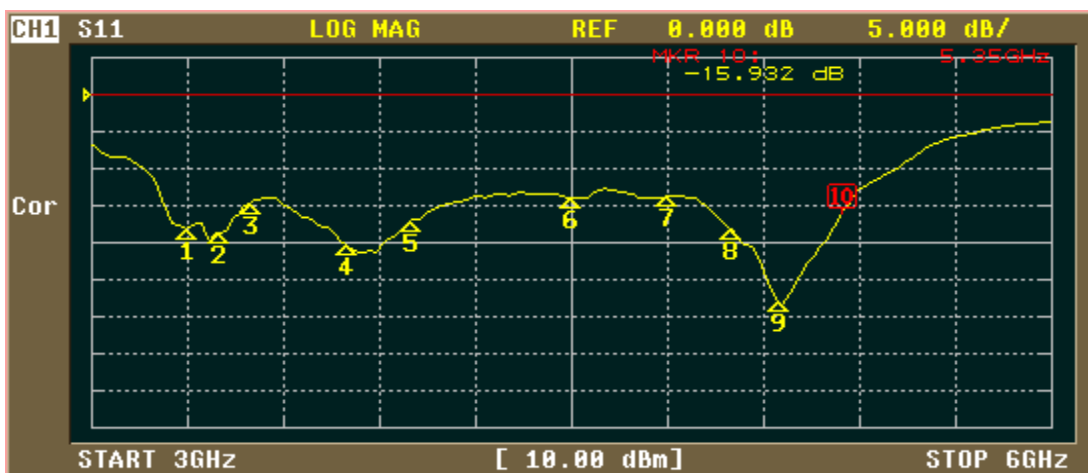
ACTIVATE MKR OFF

Return

More 2/2

CH1 MARKER LIST

1:	3.300 000GHz	1.395
2:	3.400 000GHz	1.096
3:	3.500 000GHz	1.228
4:	3.800 000GHz	1.060
5:	4.000 000GHz	1.274
6:	4.500 000GHz	1.304
7:	4.800 000GHz	1.496
8:	5.000 000GHz	1.338
9:	5.150 000GHz	1.133
10:	5.350 000GHz	1.177



FORMAT

LOG MAG

PHASE

DELAY

SMITH (R+jX)

SMITH (G+jB)

POLAR

LIN MAG

More 1/2

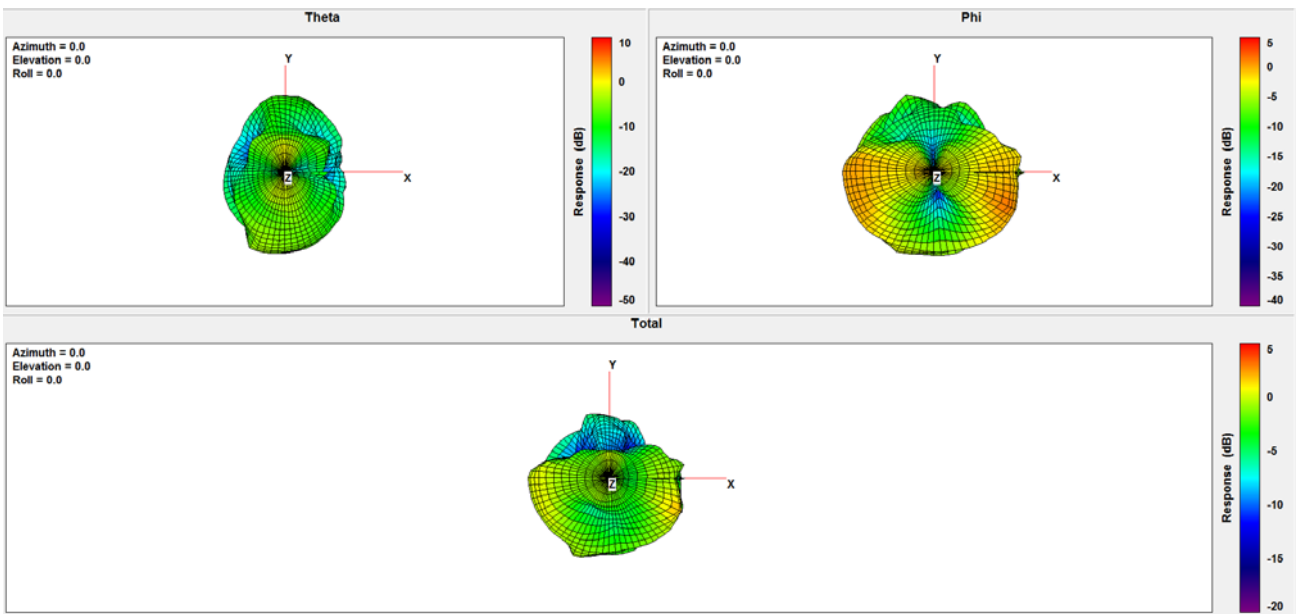
CH1 MARKER LIST

1:	3.300 000GHz	-18.146 dB
2:	3.400 000GHz	-18.665 dB
3:	3.500 000GHz	-14.524 dB
4:	3.800 000GHz	-20.385 dB
5:	4.000 000GHz	-17.065 dB
6:	4.500 000GHz	-13.930 dB
7:	4.800 000GHz	-13.684 dB
8:	5.000 000GHz	-18.186 dB
9:	5.150 000GHz	-28.109 dB
10:	5.350 000GHz	-15.932 dB

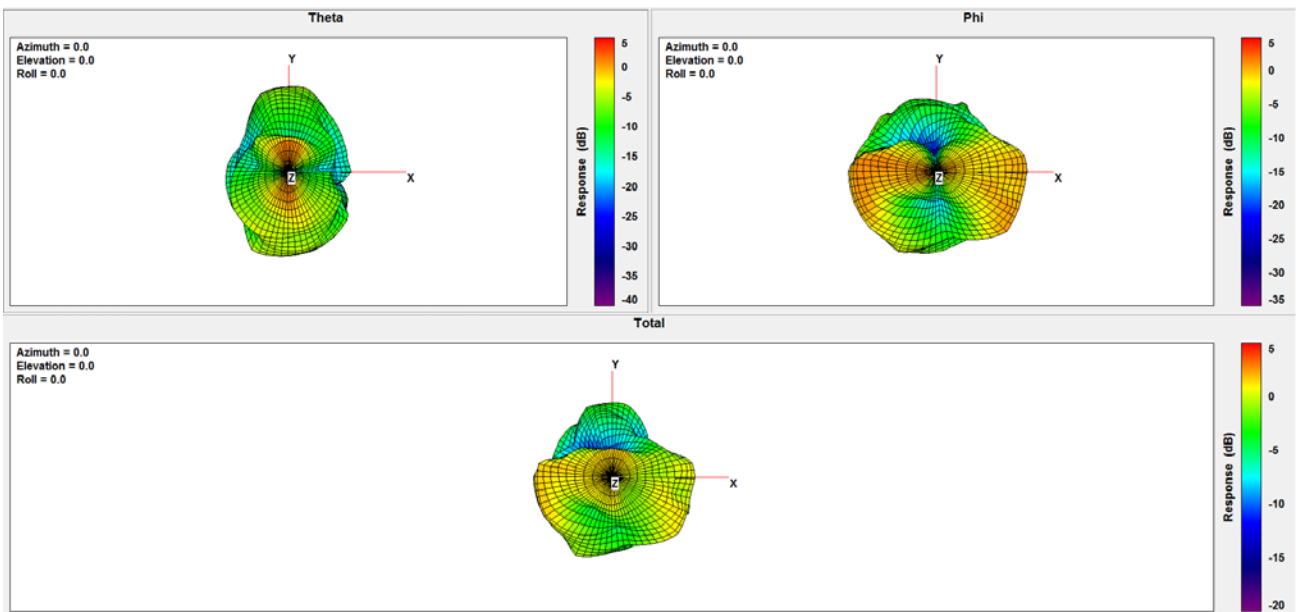
**Test result:**

Frequency (MHz)	3300	3400	3500	3800	4000	4500	4800	4900	5000	5150	5350
Peak Gain (dBi)	3.74	2.98	2.53	3.84	3.68	5.11	5.09	5.30	5.53	5.44	5.34
Efficiency (%)	43.42	52.70	55.95	66.07	57.36	72.69	77.45	72.67	77.27	76.15	73.28

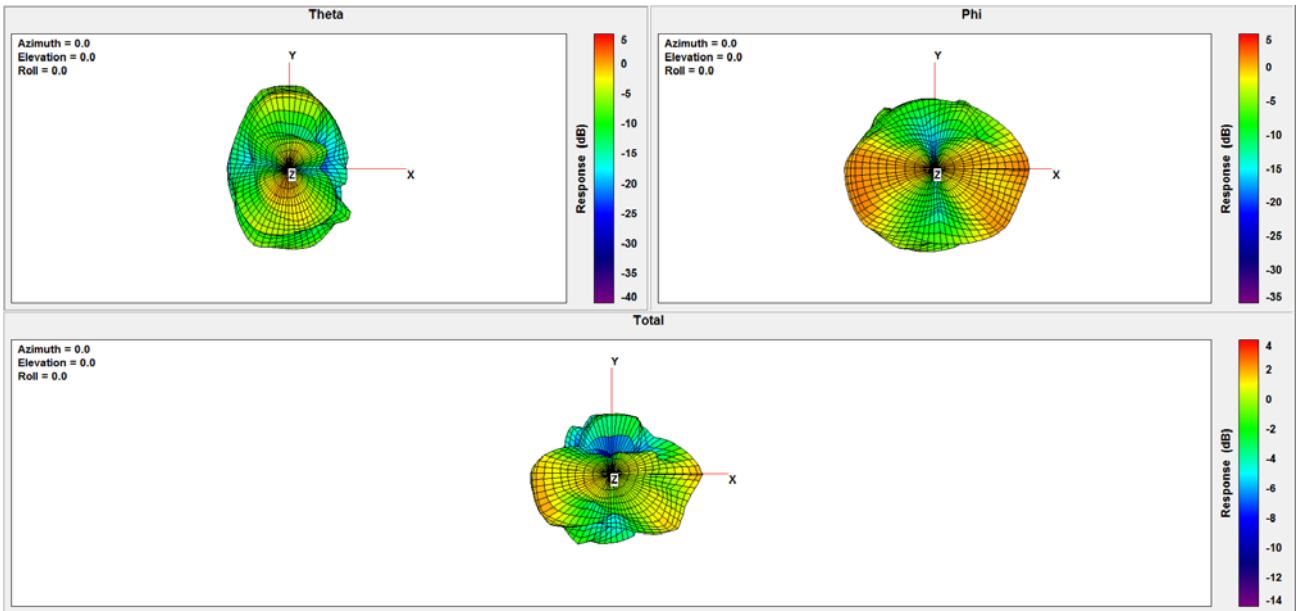
**3.3G:**



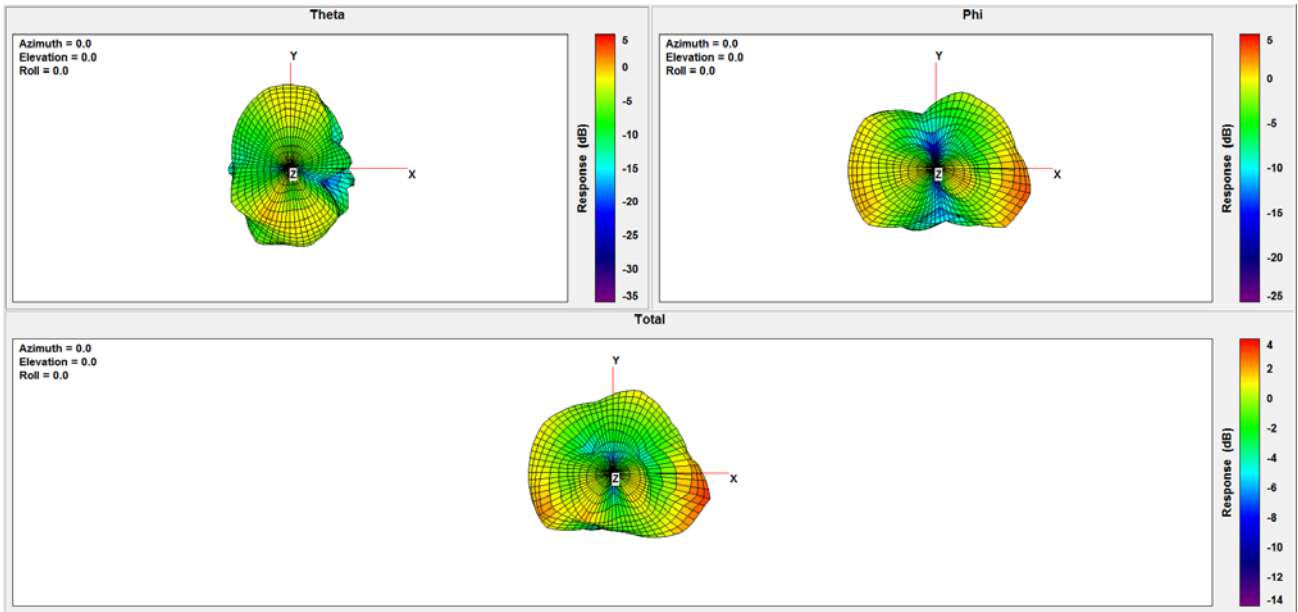
**3.4G:**



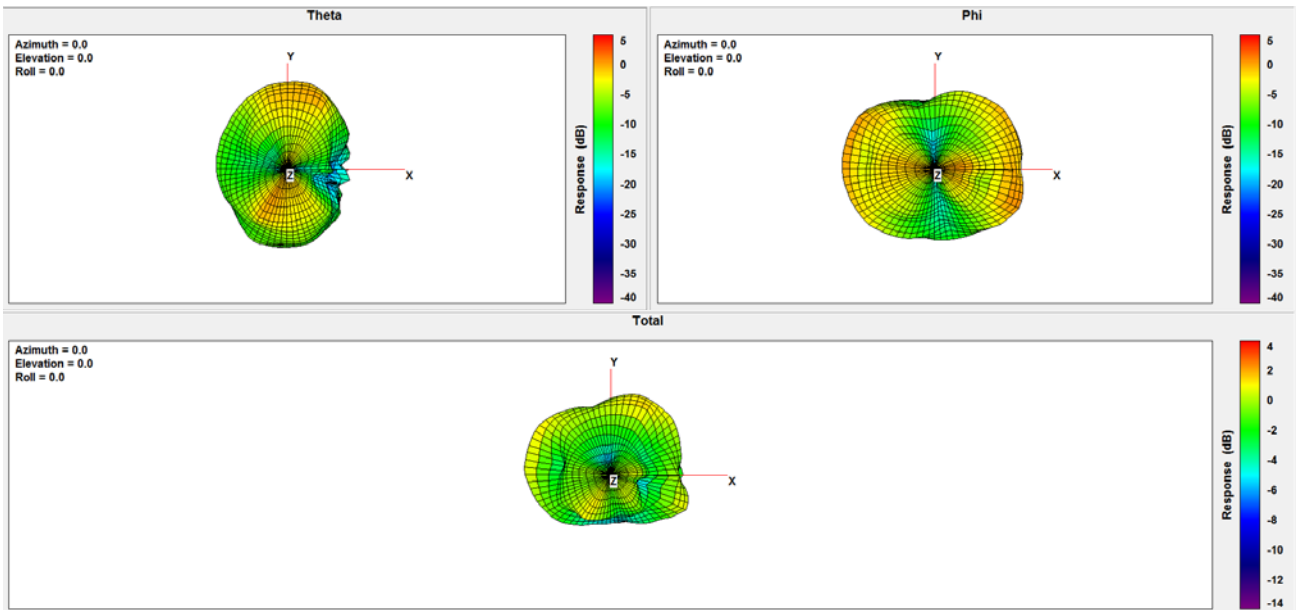
**3.5G:**



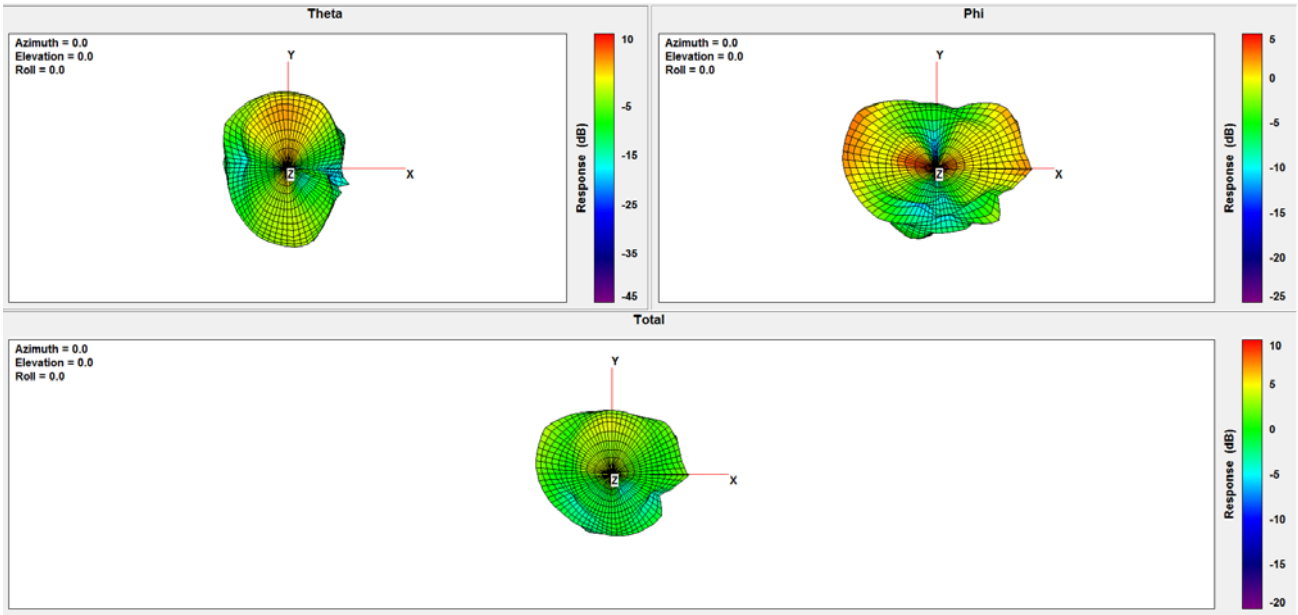
3.8G:



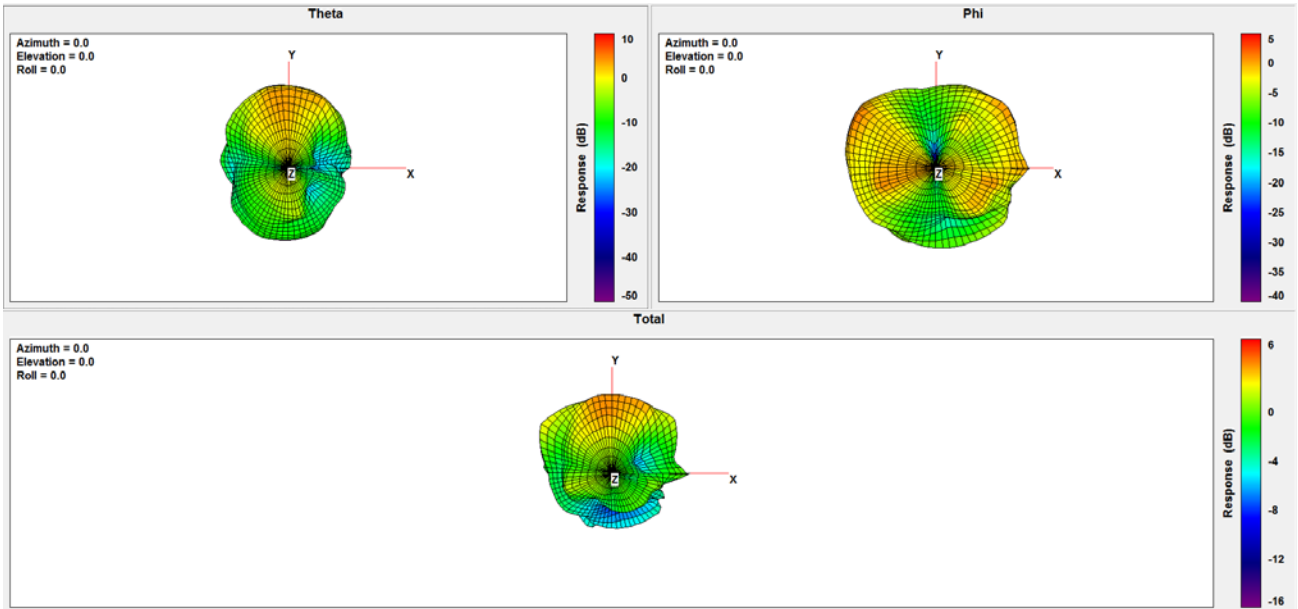
4.0G:



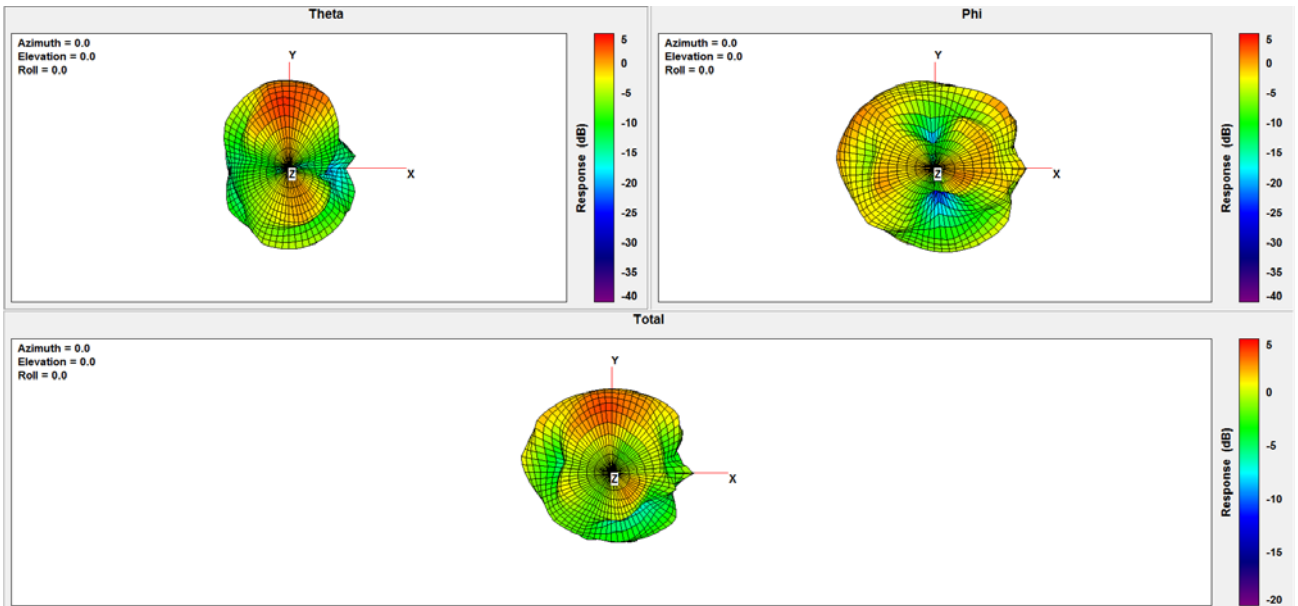
### 4.5G:



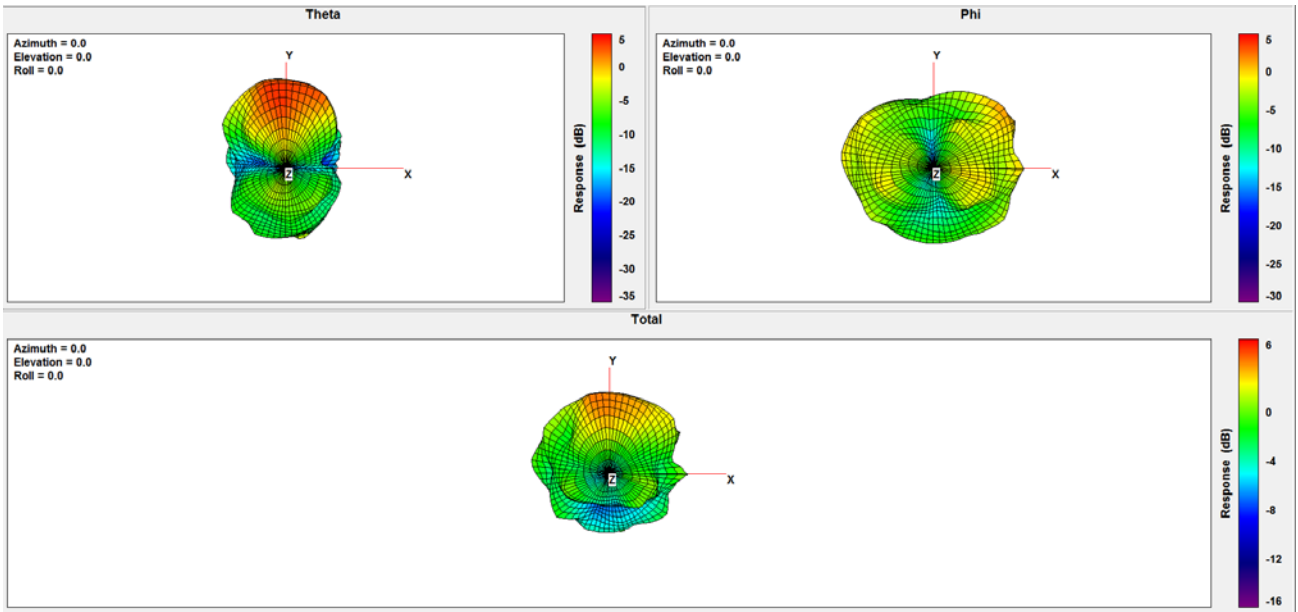
### 4.8G:



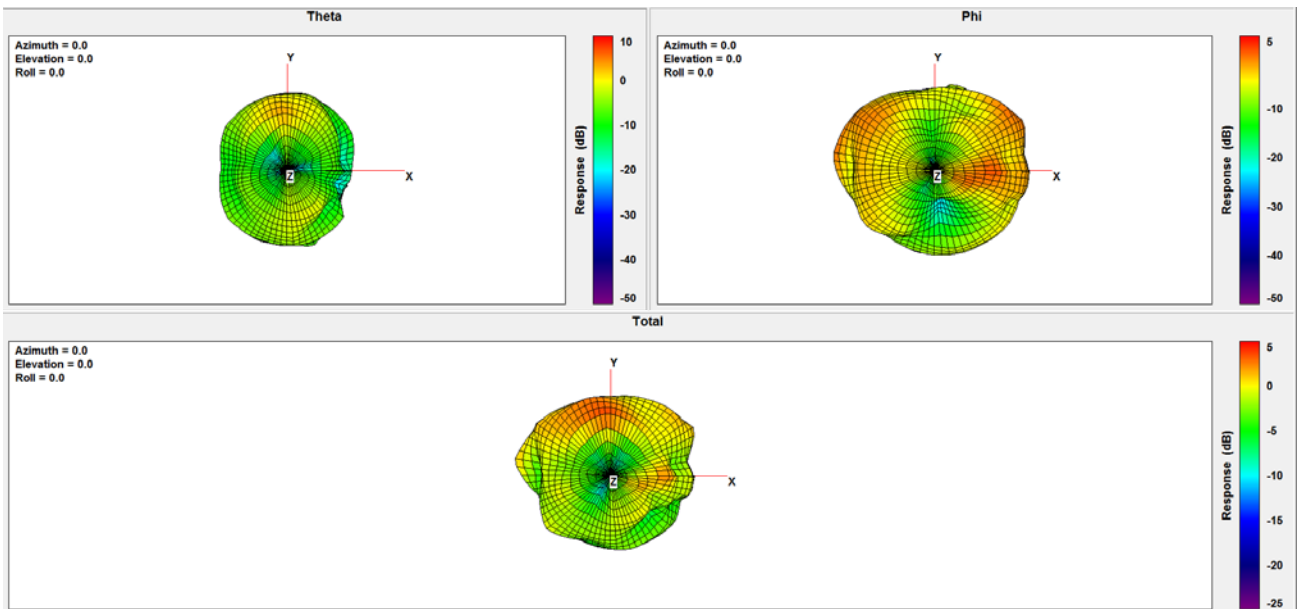
### 4.9G:



### 5.0G:



### 5.15G:



### 5.35G:

