

RFID/Sigfox/ISM/LoRo UHF Antenna

Model : TH-89D



1. GENERAL DESCRIPTION

P/N
TH-89D-SMA(M)

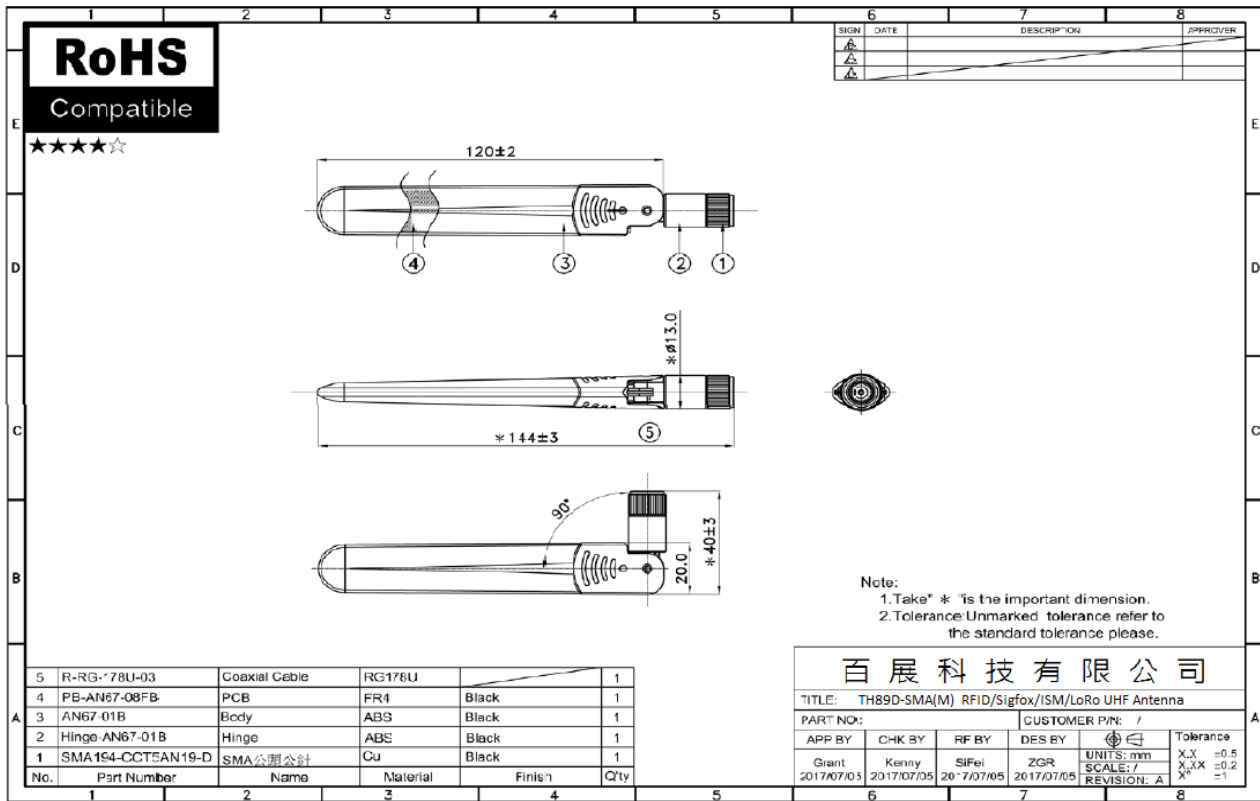
1.1 Electrical Properties

Parameter	Description
Frequency Band	824~960MHz
Nominal Impedance	50 ohm
Polarization	Vertical
V.S.W.R	2.0 : 1

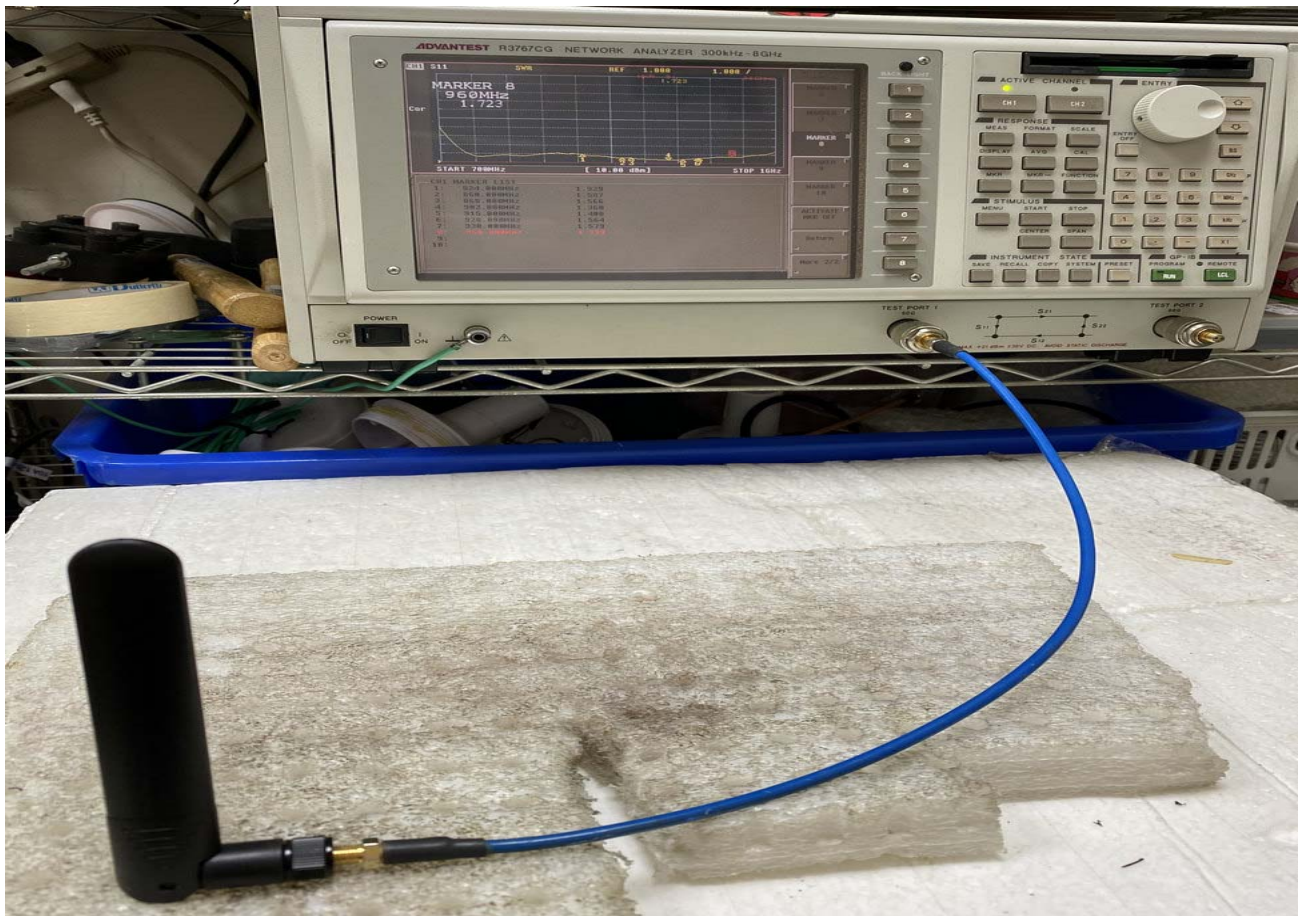
1.2 Mechanical Properties

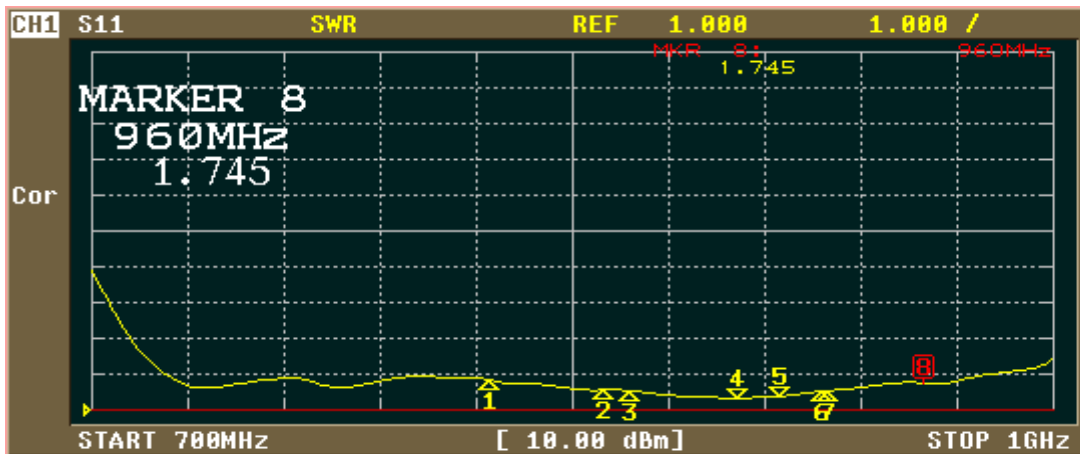
Parameter	Description
Antenna Type	External Antenna
Touch Type	Screw Type
Connector Type	SMA 180°(Male)
Antenna Dimensions	144mm±3
Antenna Color	Black
Operating Temperature Range	-30°C~+70°C
Storage Temperature Range	-30°C~+70°C

2. APPEARANCE:



3. Return Loss, V.S.W.R. and Smith Chart





ACTIVATE MARKER

MARKER 6

MARKER 7

MARKER 8

MARKER 9

MARKER 10

ACTIVATE MKR OFF

Return

More 2/2

CH1 MARKER LIST

1:	824.000MHz	1.837
2:	860.000MHz	1.553
3:	868.000MHz	1.532
4:	902.000MHz	1.326
5:	915.000MHz	1.375
6:	928.000MHz	1.521
7:	930.000MHz	1.536
8:	960.000MHz	1.748
9:		
10:		



FORMAT

LOG MAG

PHASE

DELAY

SMITH (R+jX)

SMITH (G+jB)

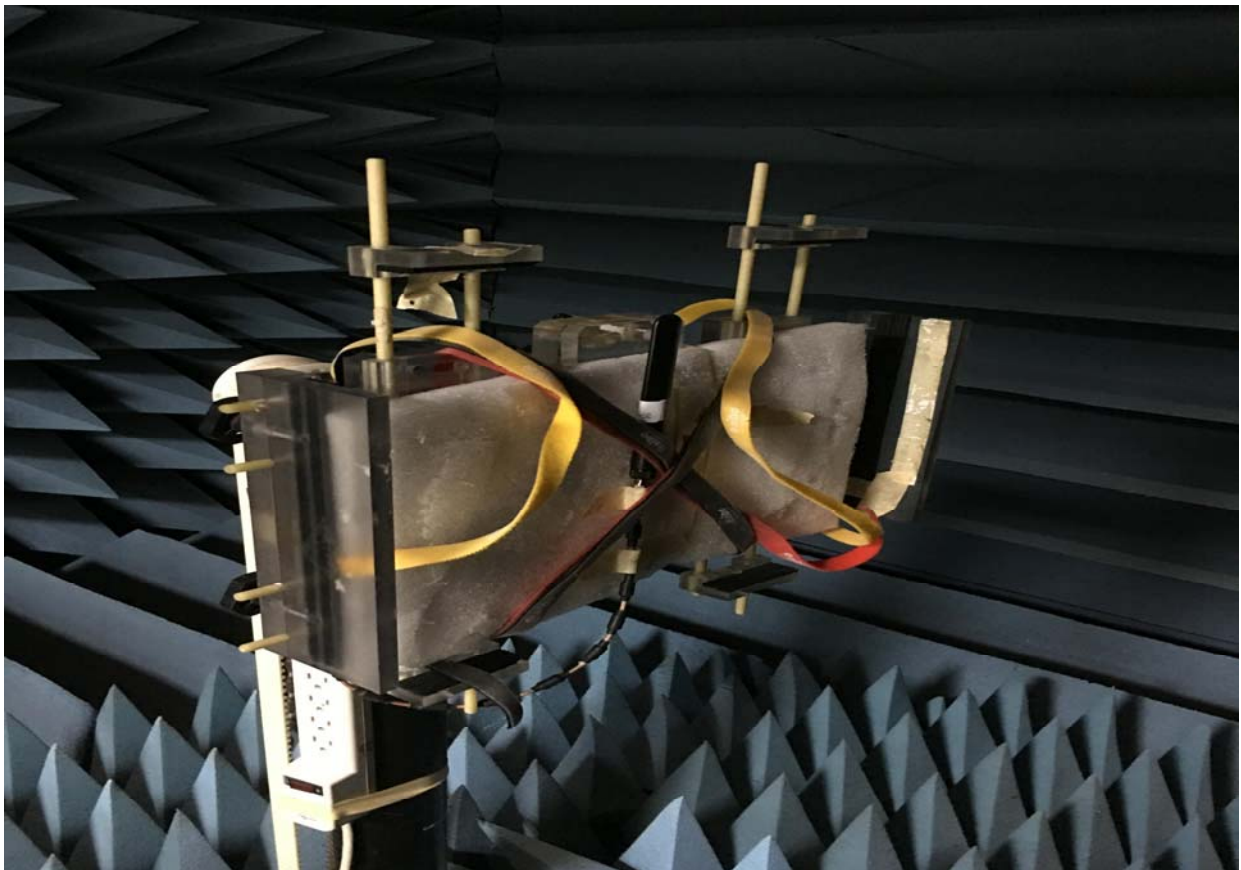
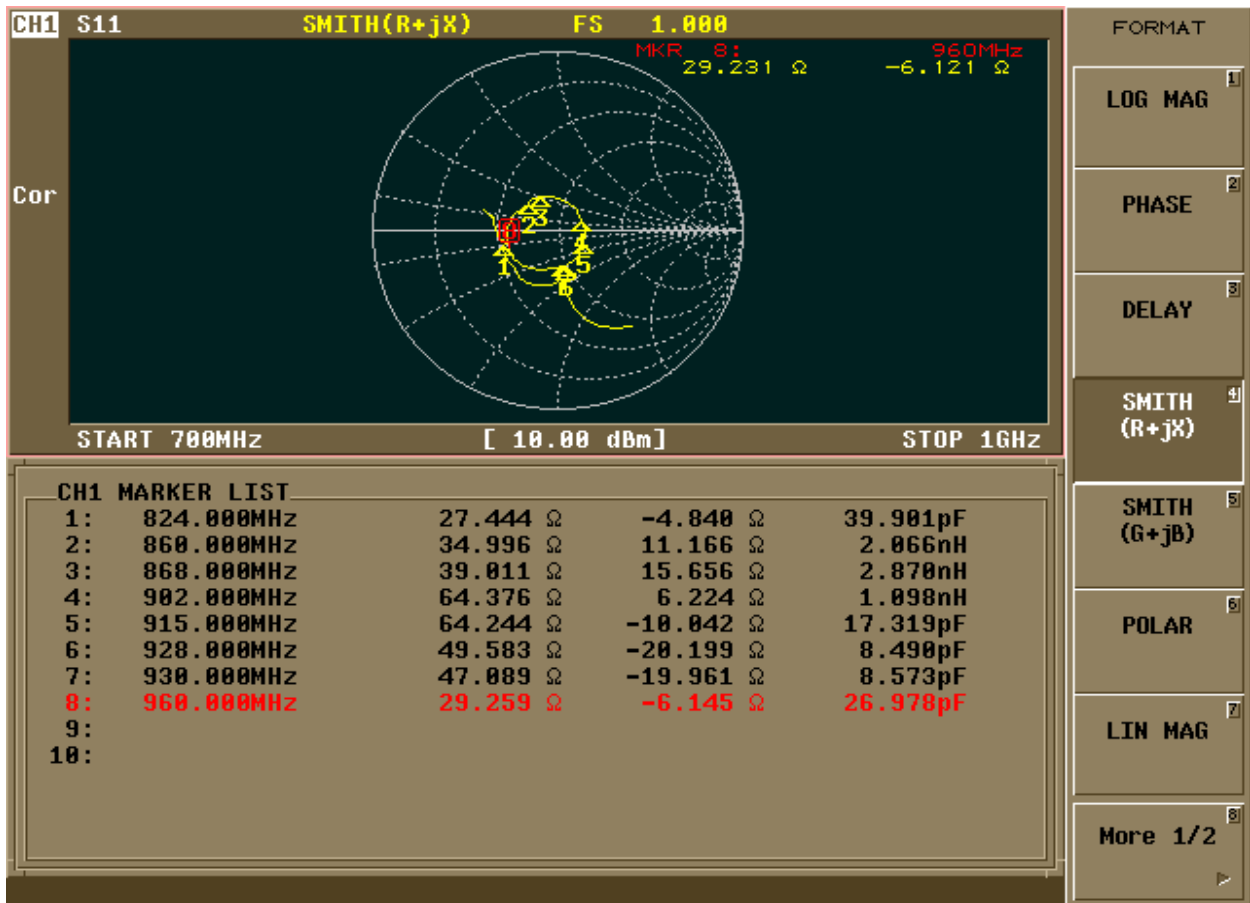
POLAR

LIN MAG

More 1/2

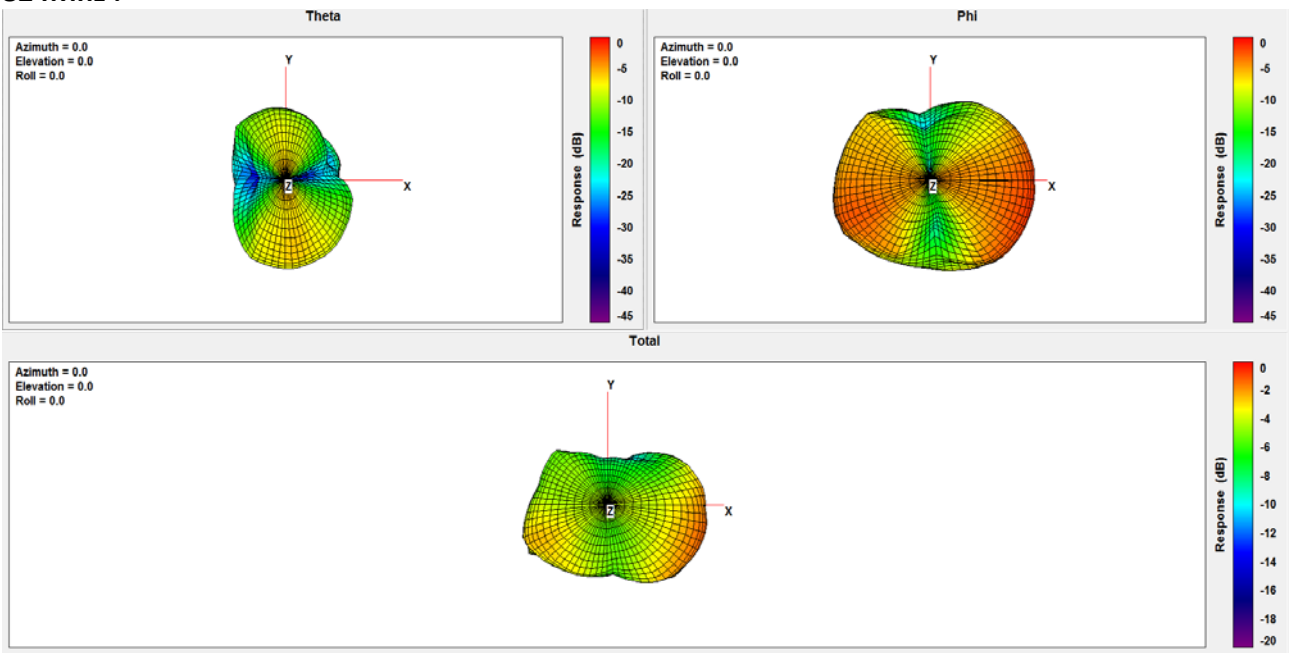
CH1 MARKER LIST

1:	824.000MHz	-10.585 dB
2:	860.000MHz	-13.213 dB
3:	868.000MHz	-13.487 dB
4:	902.000MHz	-17.281 dB
5:	915.000MHz	-16.297 dB
6:	928.000MHz	-13.930 dB
7:	930.000MHz	-13.729 dB
8:	960.000MHz	-11.194 dB
9:		
10:		

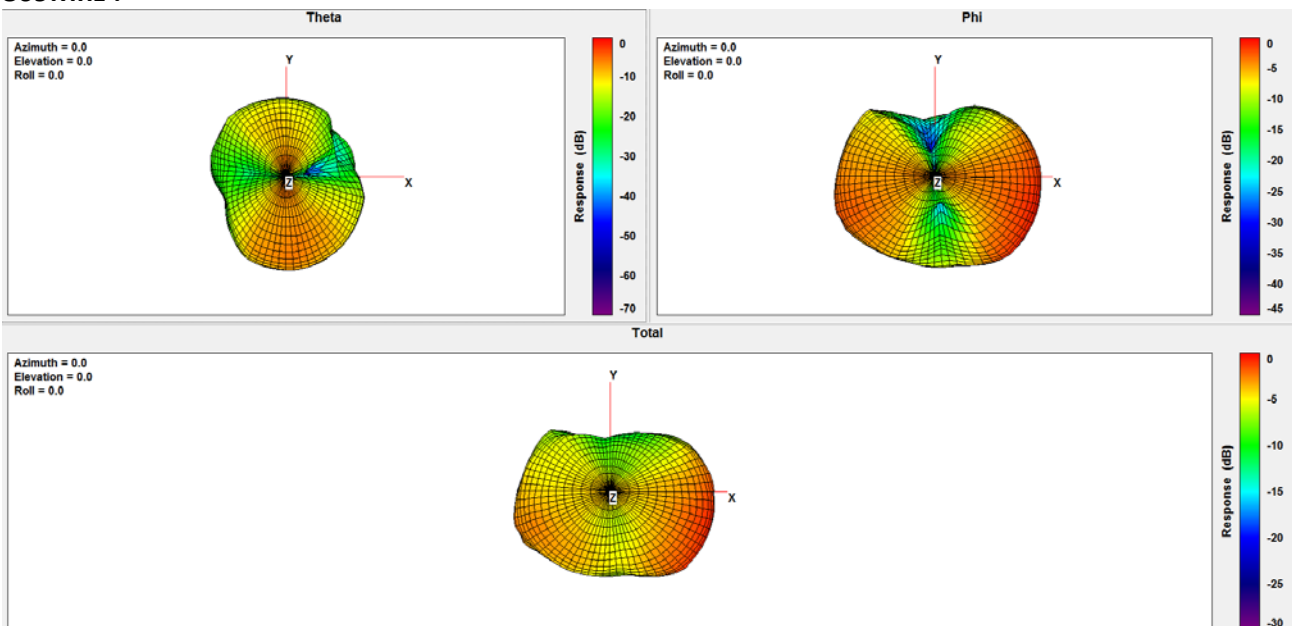


Frequency (MHz)	824	836	849	862	869	880	894	900	915	925	940	960
Peak Gain (dBi)	-1.07	-0.82	-0.50	-0.57	-0.67	-0.55	-0.43	-0.26	0.08	0.14	-0.09	-0.62
Efficiency (%)	33.01	34.07	36.16	36.12	35.69	35.55	34.14	33.96	33.91	33.60	32.42	29.05

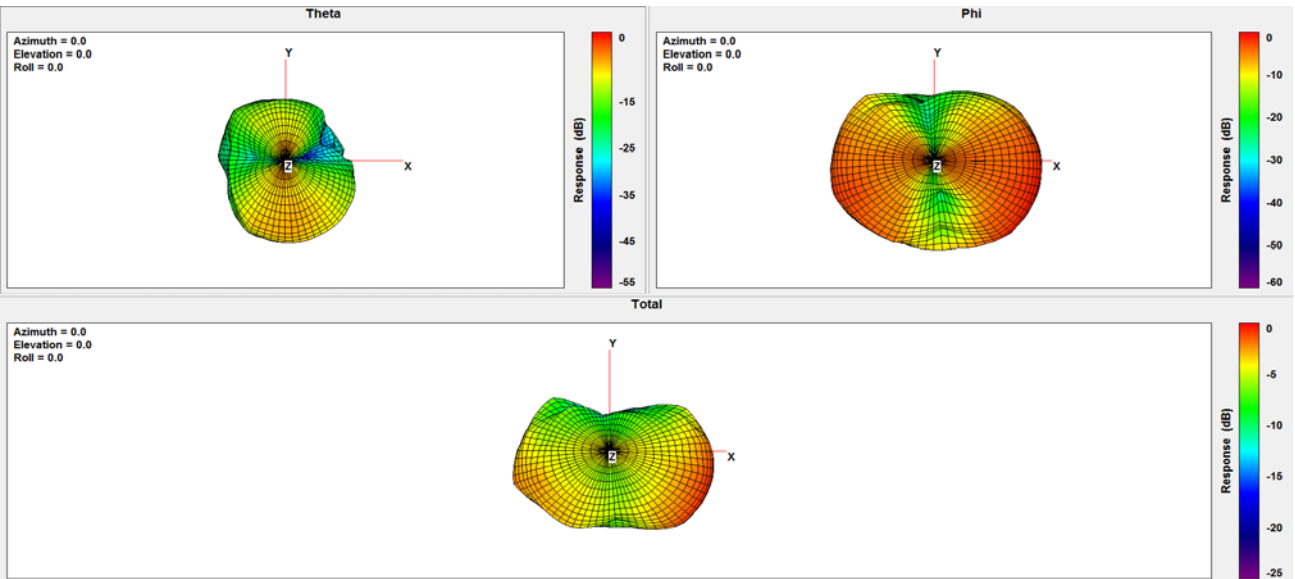
824Mhz :



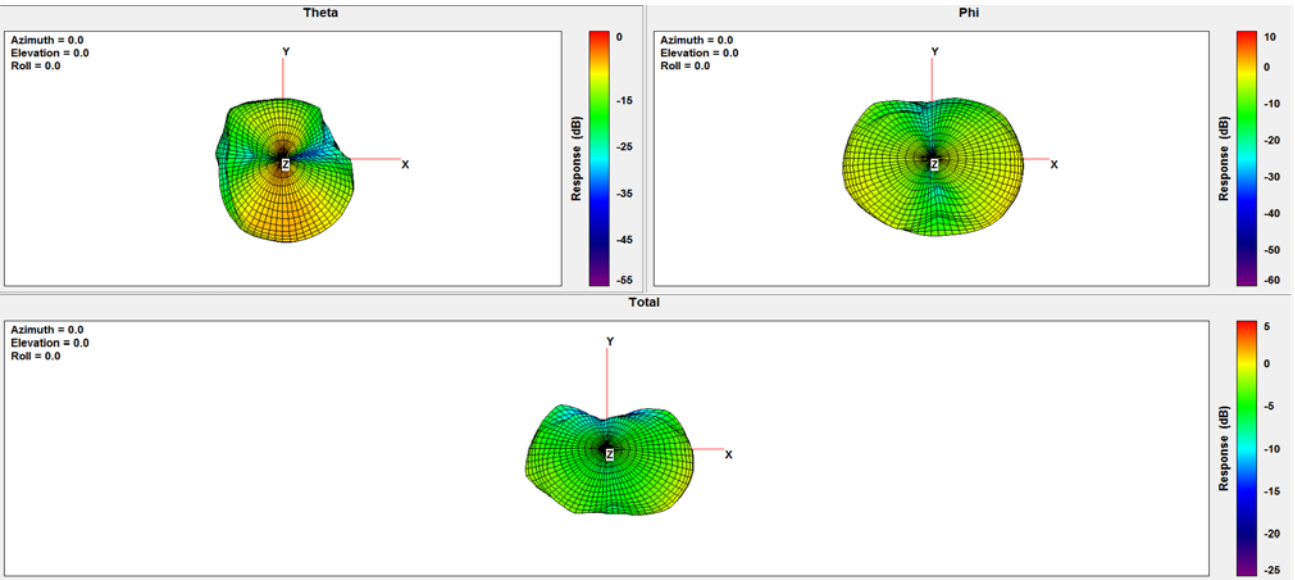
869Mhz :



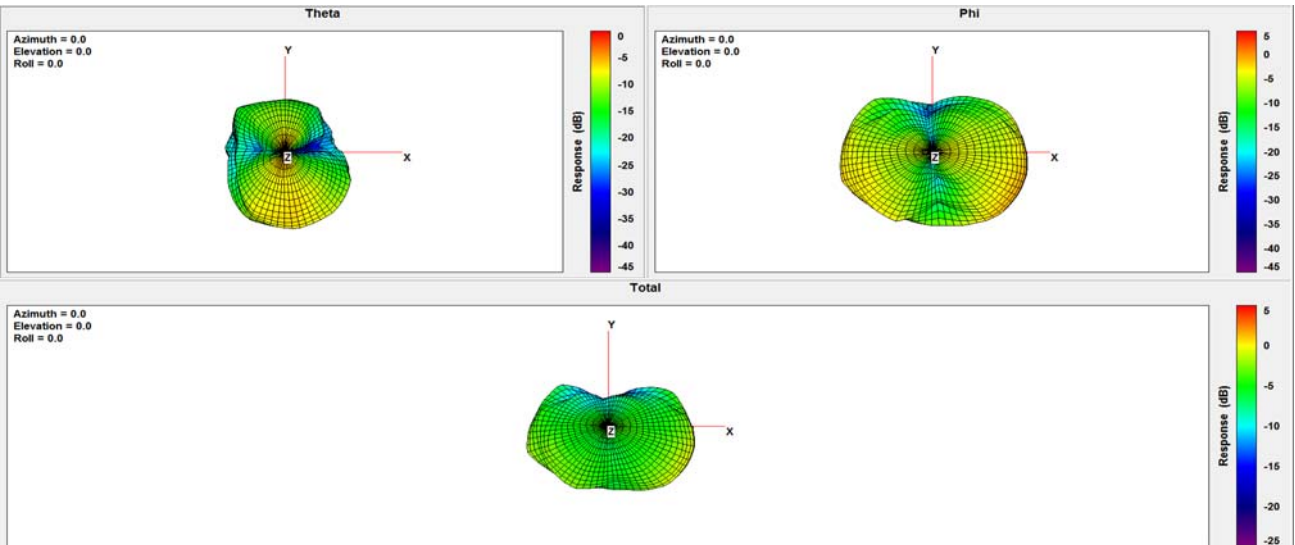
900Mhz :



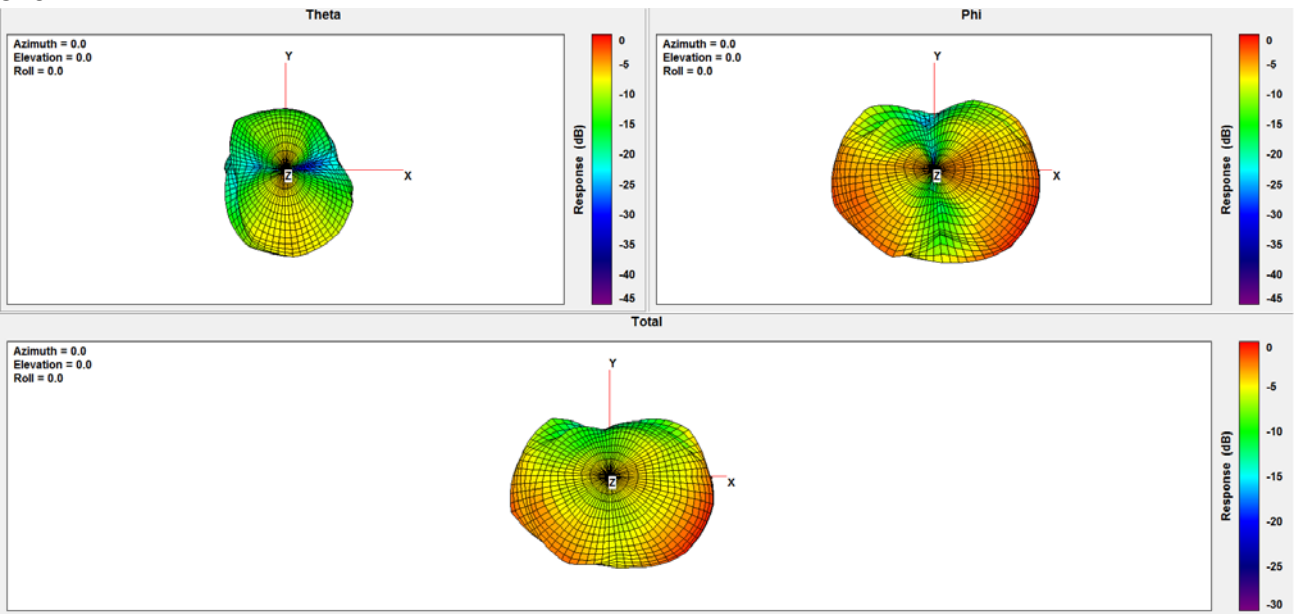
915Mhz :



925Mhz :



940Mhz :



960Mhz :

