

# L Band & 2.4G & S Band Antenna

MODEL: TH-1438B



## 1.. GENERAL DESCRIPTION

Model No
TH1438B-SMA(M)

### 1.1 Electrical Properties



Parameter	Description
Frequency Band	1425~1450 & 2400~2500MHz (VSWR:1.5:1 ) 1350~1500 & 2250~3000Mhz (VSWR:2.0:1 )
Nominal Impedance	50 ohm
Polarization	Vertical
V.S.W.R	2.0:1

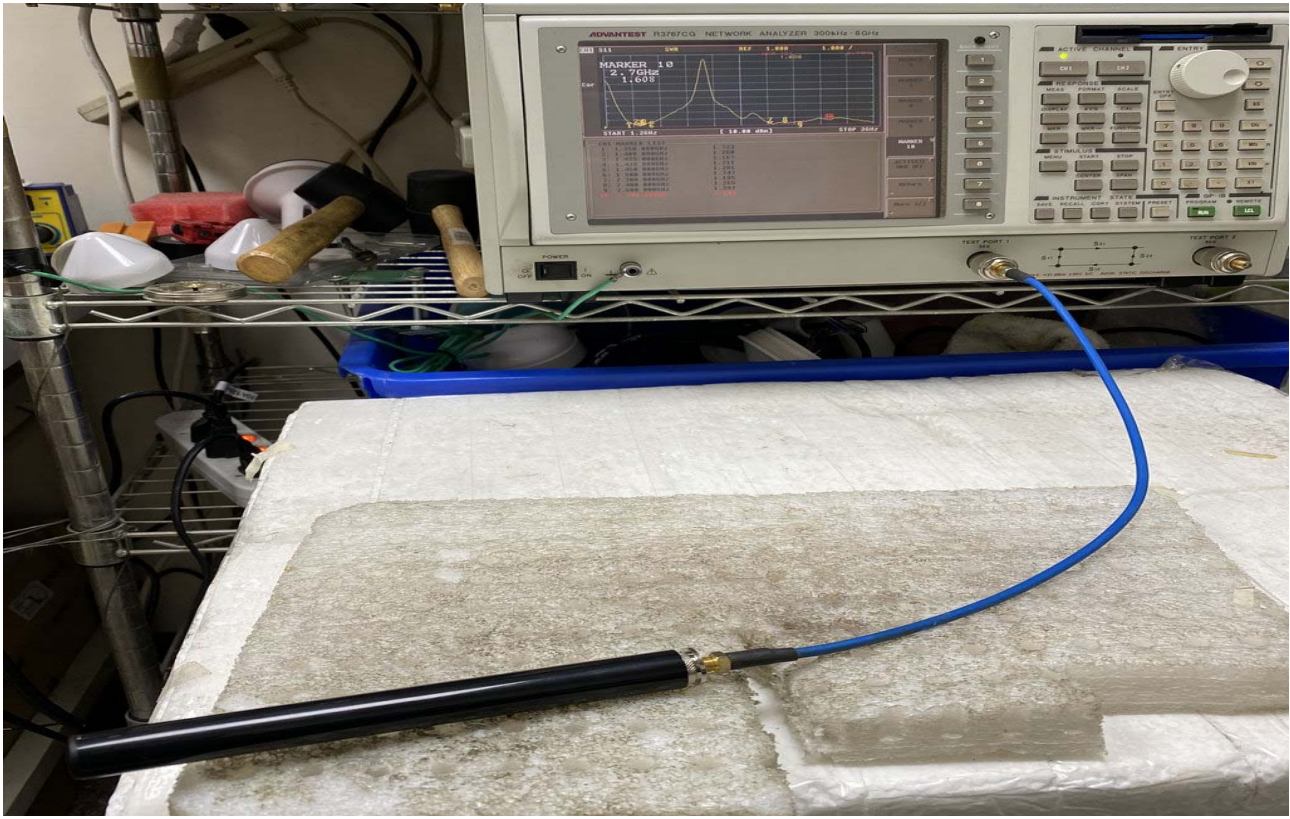
### 1.2 Mechanical Properties

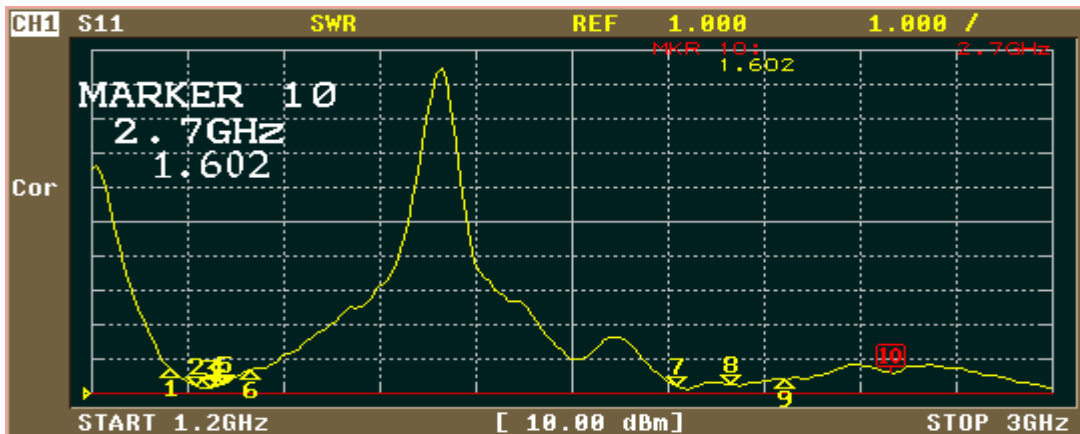
Parameter	Description
Antenna Type	External Antenna
Material	ASA
Touch Type	Screw Type
Connector Type	SMA connector (Male)
Antenna Dimensions	Ø16 x 155mm ±2
Antenna Color	Black
Operating Temperature Range	-30°C~+80°C
Storage Temperature Range	-30°C~+80°C

NO.	NAME	Q, TY
01	ASA-UV Tube	01
02	SMA(M)	01



 Third angle projection	CUSTOMER'S	MODEL	PARTS NUMBER	FREQUENCY	UNIT	SCALE	DATE	VERSION
		TH1438B			M/M		20200323	1
	TOLERANCE	X. XX±0.15	NAME	PARTS NUMBER	APPROVED	CHECKED	DRAWING	DESIGNED
	SURFACE ROUGHNESS		APPEARANCE					





ACTIVATE MARKER

MARKER 6

MARKER 7

MARKER 8

MARKER 9

MARKER 10

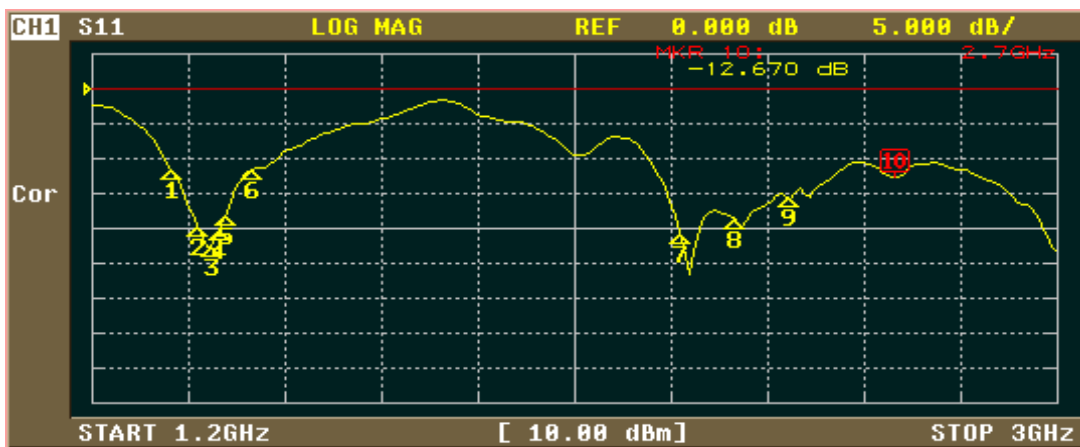
ACTIVATE MKR OFF

Return

More 2/2

CH1 MARKER LIST

1:	1.350 000GHz	1.701
2:	1.400 000GHz	1.217
3:	1.425 000GHz	1.160
4:	1.438 000GHz	1.214
5:	1.450 000GHz	1.284
6:	1.500 000GHz	1.698
7:	2.300 000GHz	1.192
8:	2.400 000GHz	1.260
9:	2.500 000GHz	1.399
10:	2.700 000GHz	1.682



FORMAT

LOG MAG

PHASE

DELAY

SMITH (R+jX)

SMITH (G+jB)

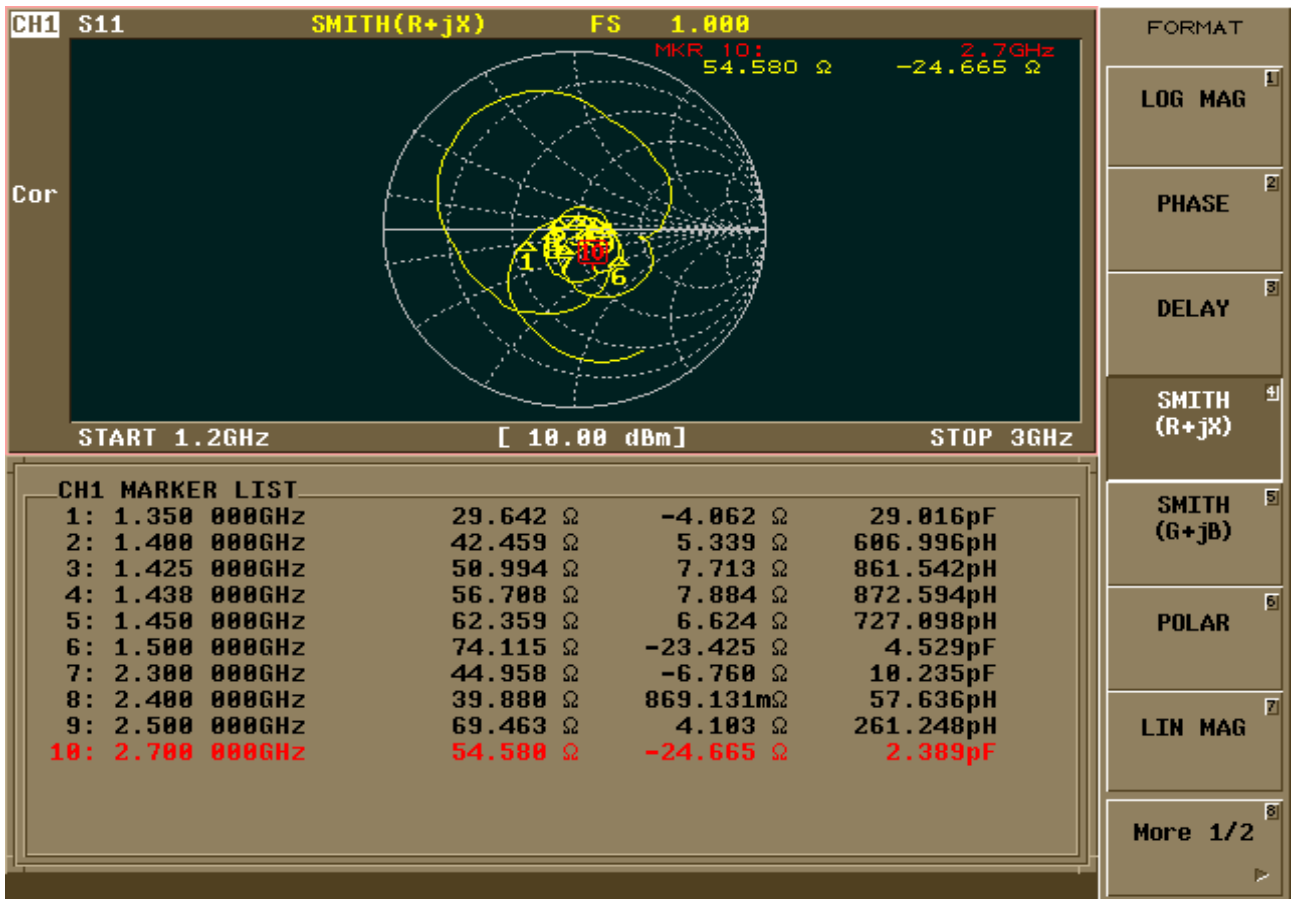
POLAR

LIN MAG

More 1/2

CH1 MARKER LIST

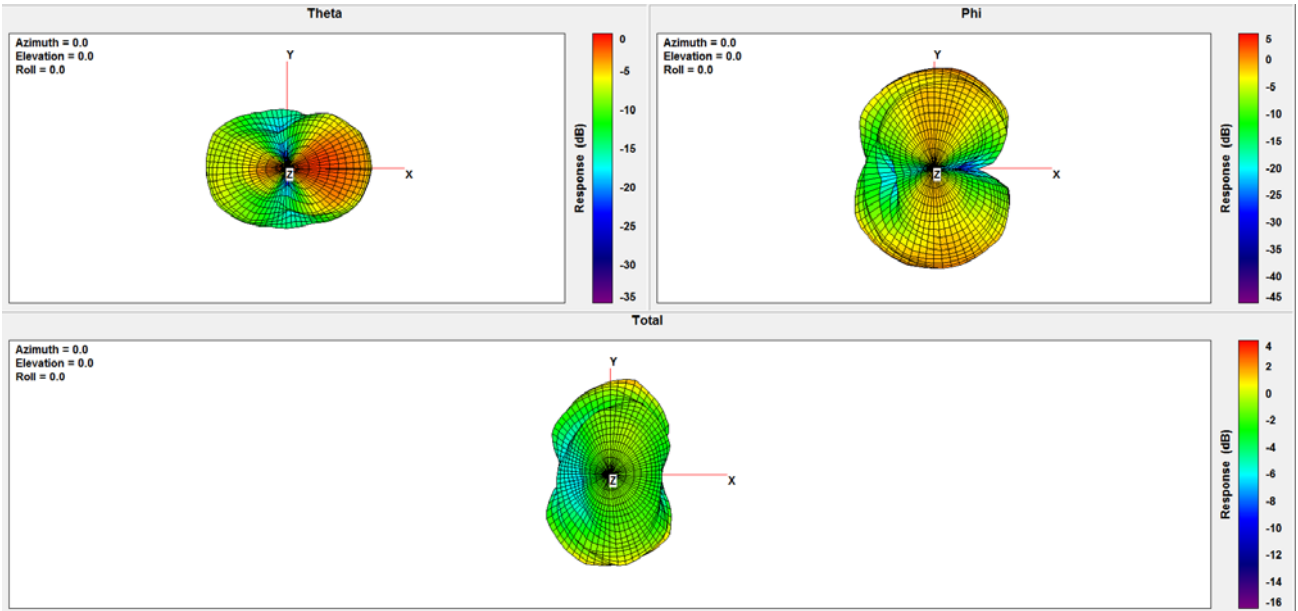
1:	1.350 000GHz	-11.696 dB
2:	1.400 000GHz	-19.981 dB
3:	1.425 000GHz	-22.456 dB
4:	1.438 000GHz	-20.326 dB
5:	1.450 000GHz	-18.094 dB
6:	1.500 000GHz	-11.446 dB
7:	2.300 000GHz	-21.096 dB
8:	2.400 000GHz	-18.637 dB
9:	2.500 000GHz	-15.548 dB
10:	2.700 000GHz	-12.670 dB



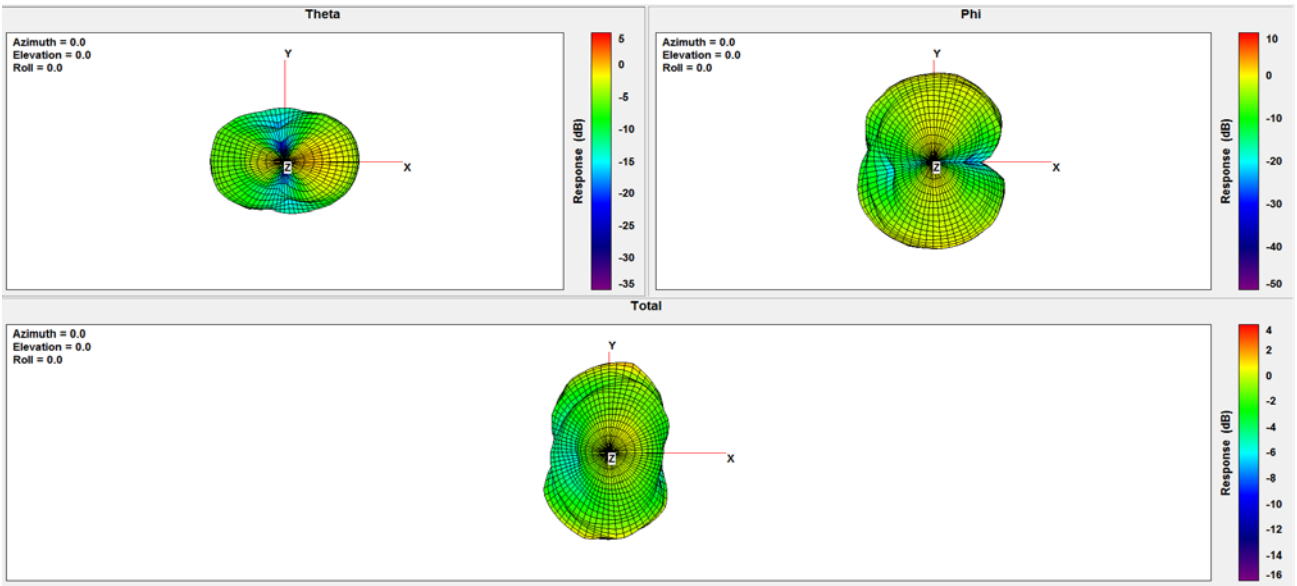


<b>Frequency (MHz)</b>	<b>1300</b>	<b>1350</b>	<b>1400</b>	<b>1425</b>	<b>1438</b>	<b>1450</b>	<b>1500</b>	<b>2250</b>	<b>2300</b>	<b>2350</b>	<b>2400</b>	<b>2450</b>
<b>Peak Gain (dBi)</b>	<b>2.26</b>	<b>2.59</b>	<b>2.39</b>	<b>2.02</b>	<b>2.02</b>	<b>1.97</b>	<b>1.53</b>	<b>3.15</b>	<b>3.17</b>	<b>3.28</b>	<b>2.85</b>	<b>2.00</b>
<b>Efficiency (%)</b>	<b>70.86</b>	<b>73.55</b>	<b>69.86</b>	<b>67.74</b>	<b>67.27</b>	<b>66.16</b>	<b>61.95</b>	<b>43.55</b>	<b>45.49</b>	<b>47.63</b>	<b>46.97</b>	<b>43.17</b>
<b>Frequency (MHz)</b>	<b>2500</b>	<b>2530</b>	<b>2575</b>	<b>2600</b>	<b>2625</b>	<b>2650</b>	<b>2690</b>	<b>2700</b>	<b>3000</b>			
<b>Peak Gain (dBi)</b>	<b>2.33</b>	<b>2.45</b>	<b>2.13</b>	<b>1.71</b>	<b>1.44</b>	<b>1.19</b>	<b>1.01</b>	<b>1.13</b>	<b>1.83</b>			
<b>Efficiency (%)</b>	<b>47.38</b>	<b>52.16</b>	<b>52.34</b>	<b>52.22</b>	<b>51.41</b>	<b>50.28</b>	<b>48.33</b>	<b>47.75</b>	<b>53.64</b>			

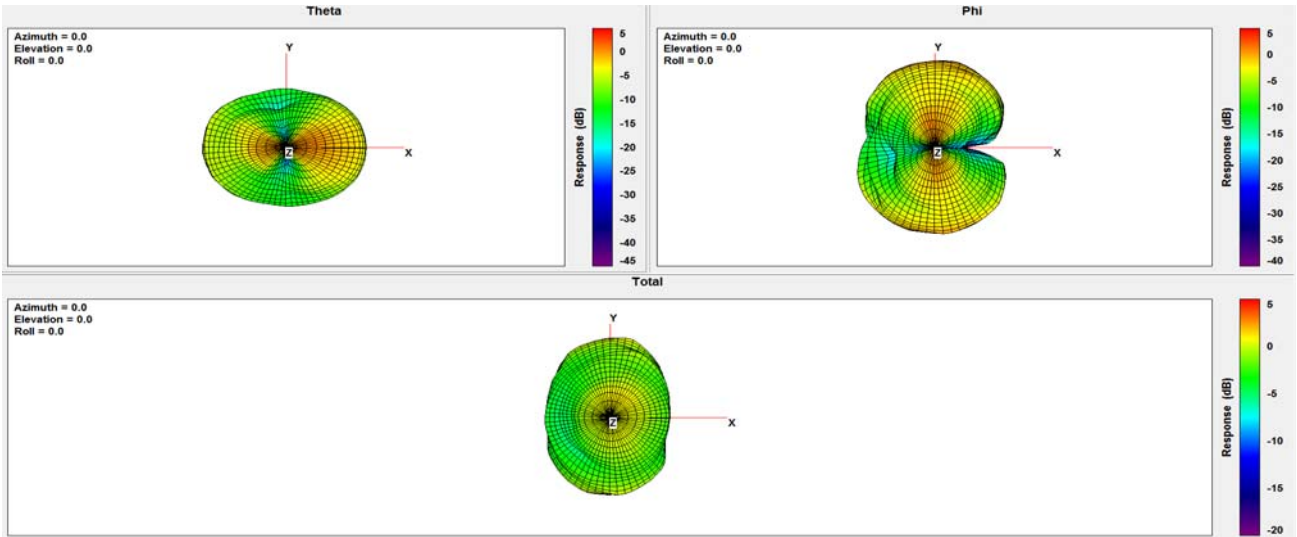
### 1300Mhz:



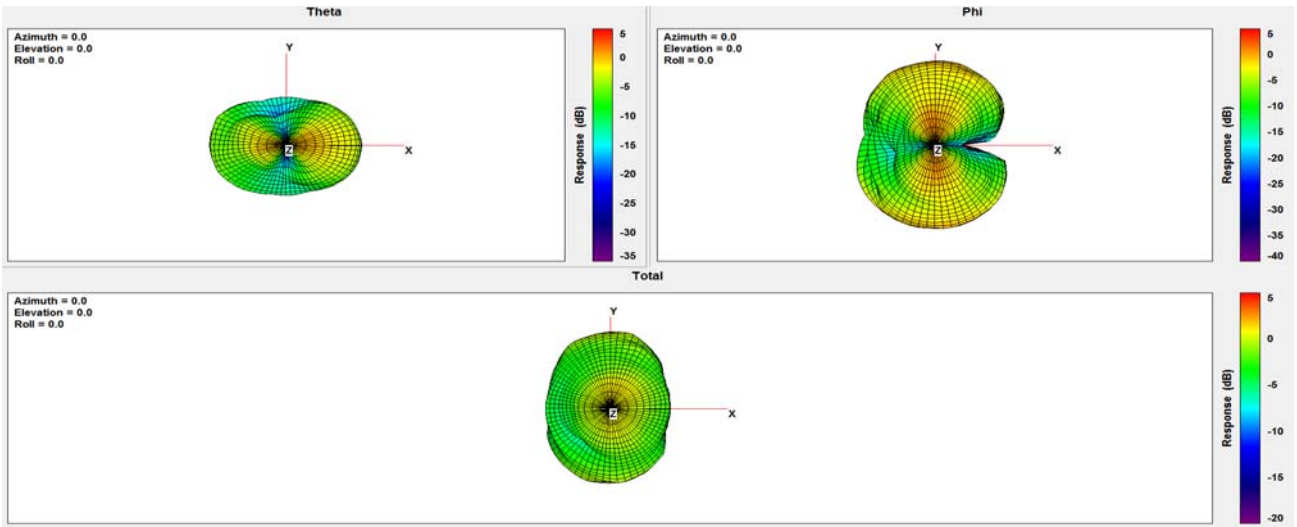
### 1350Mhz:



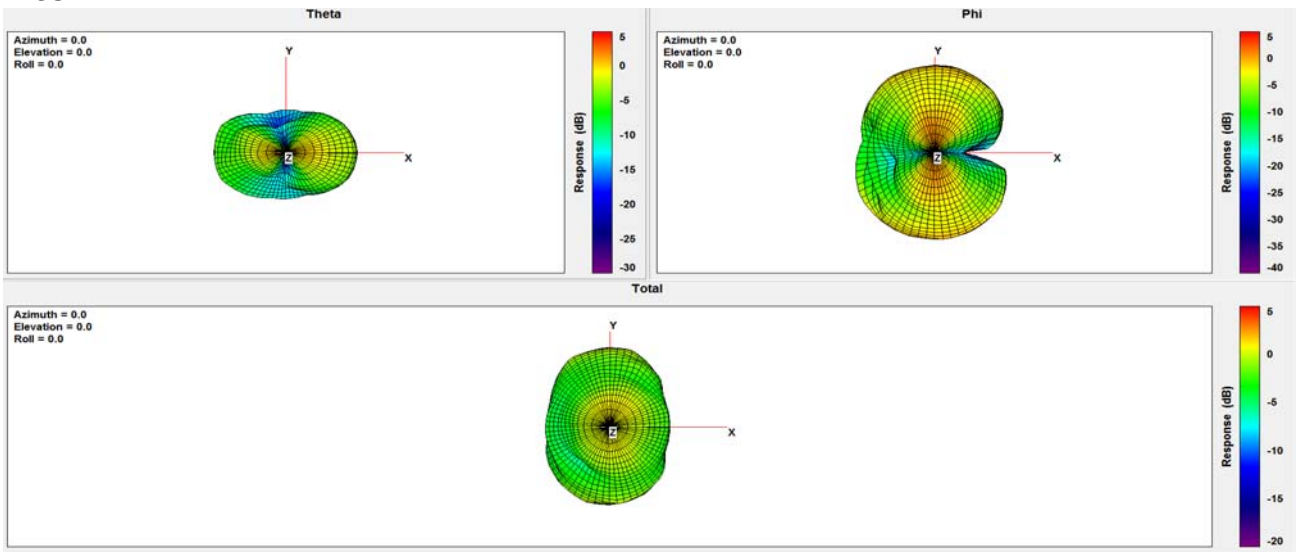
### 1400Mhz:



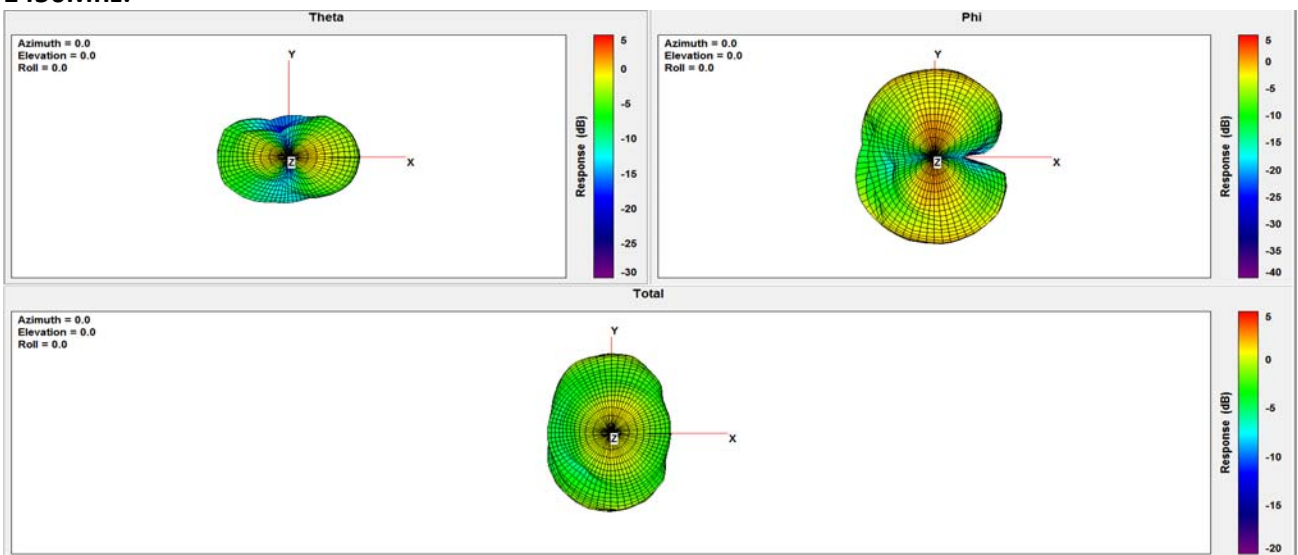
### 1425Mhz:



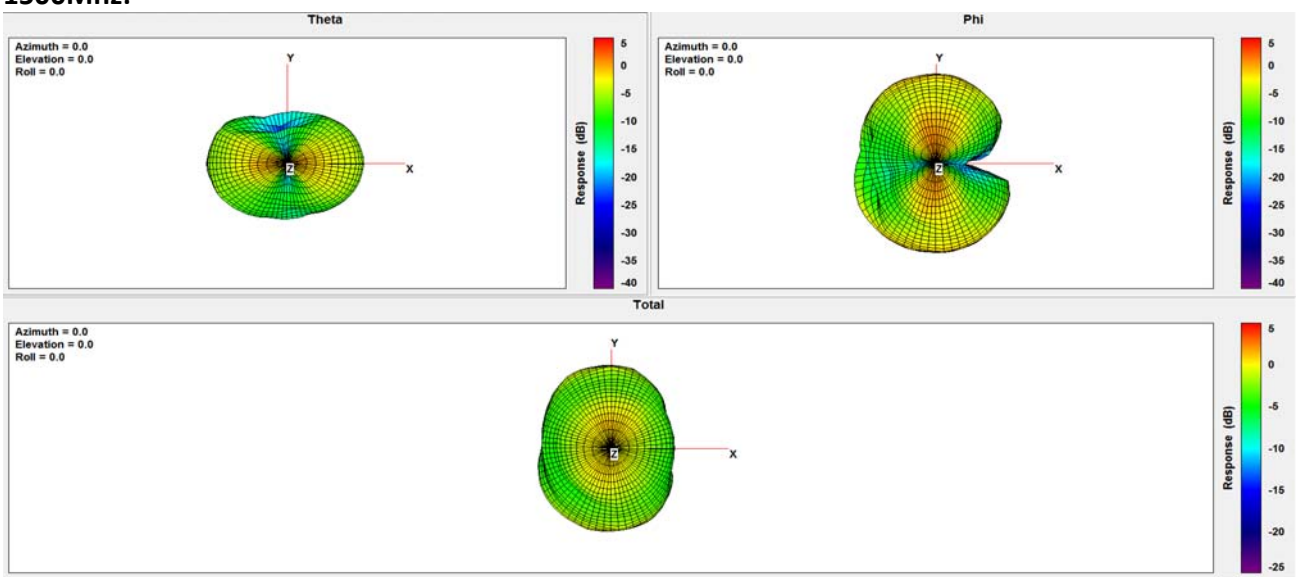
### 1438Mhz:



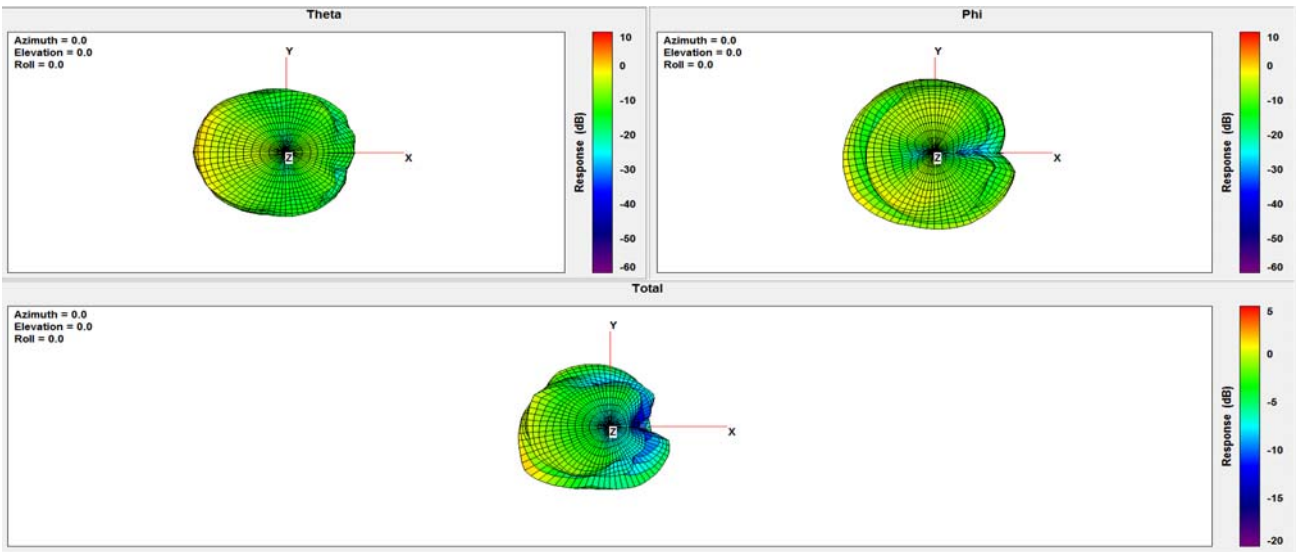
### 1450Mhz:



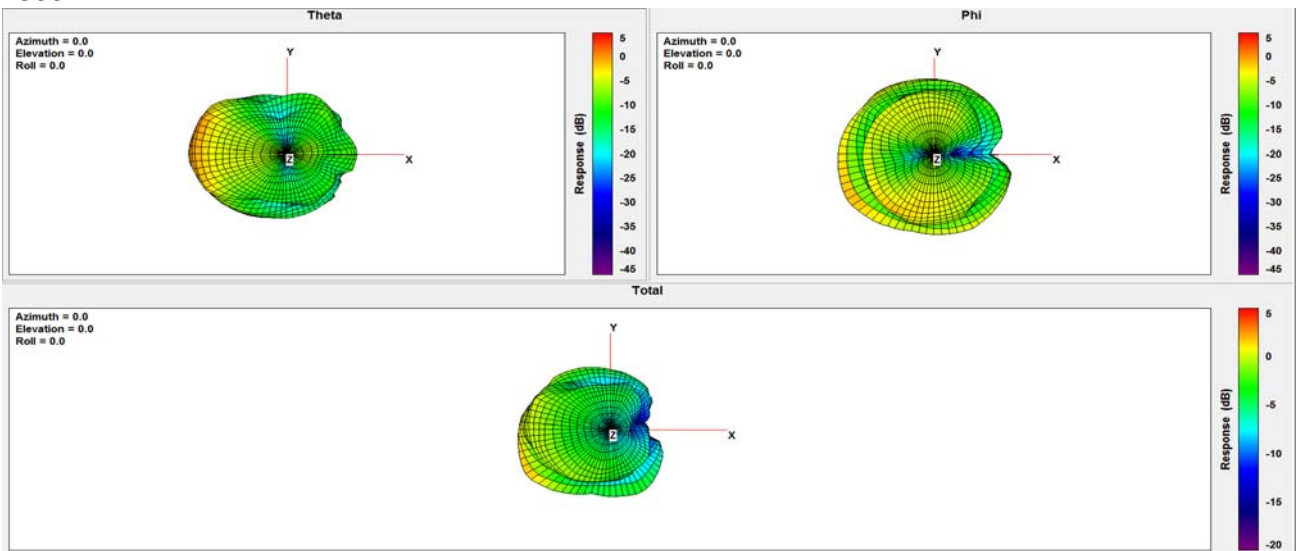
### 1500Mhz:



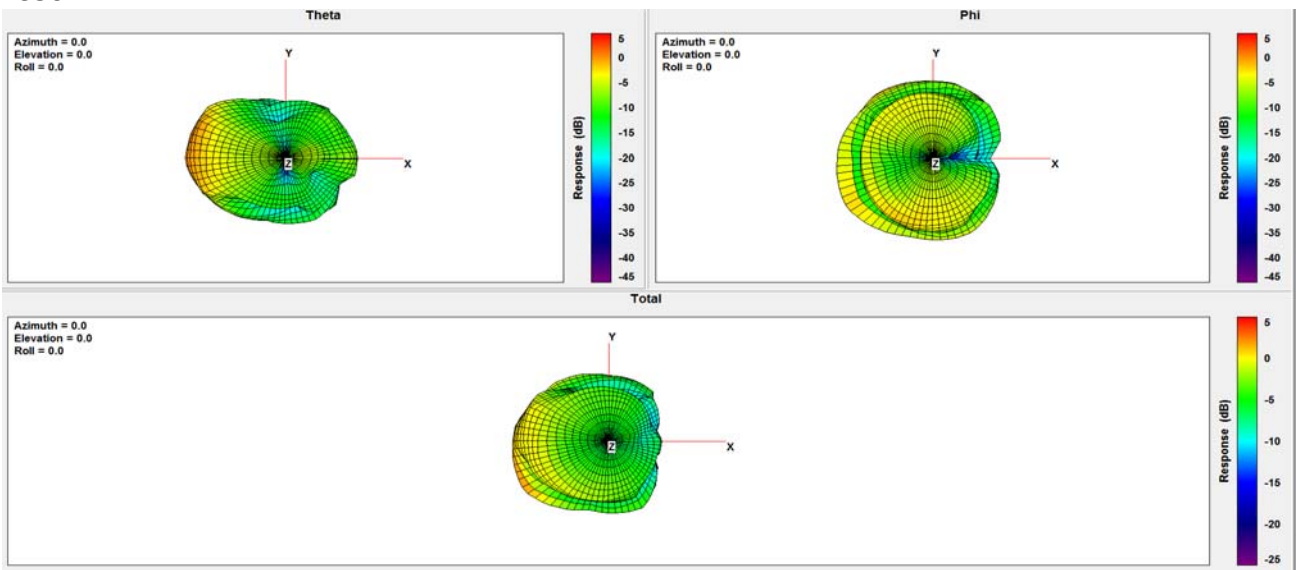
### 2250Mhz:



### 2300Mhz:

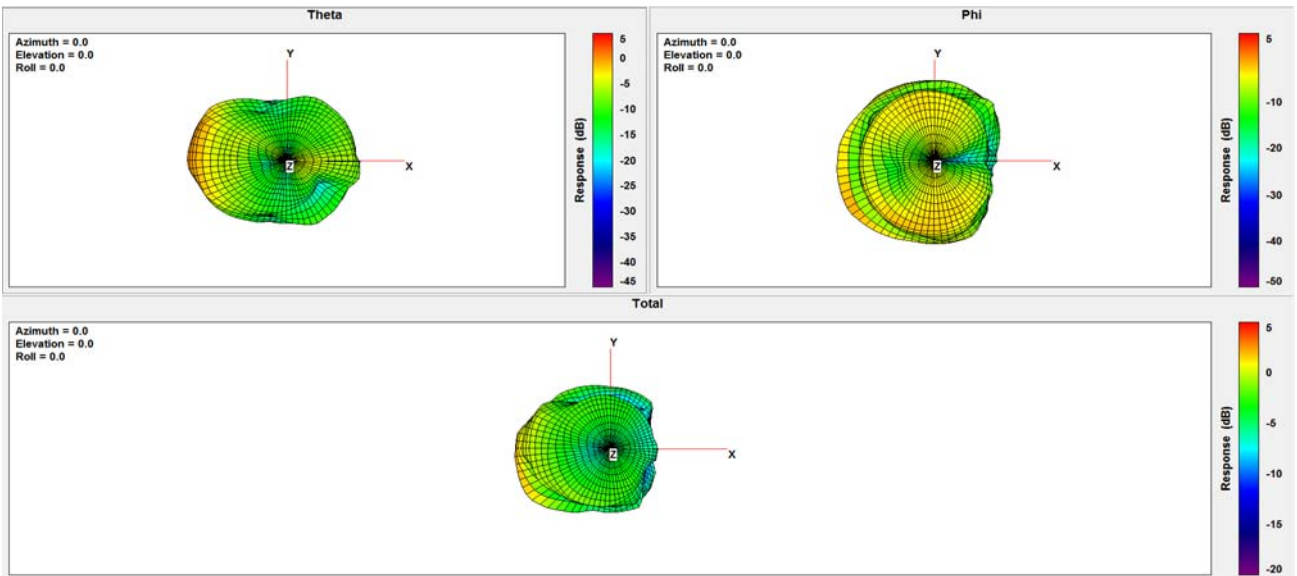


### 2350Mhz:

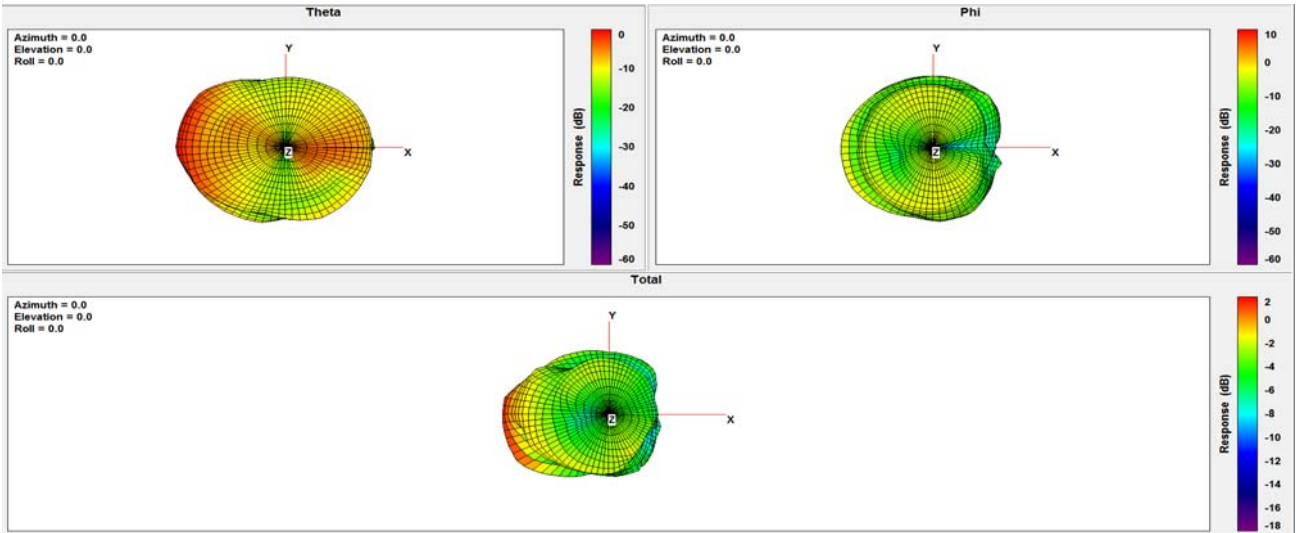




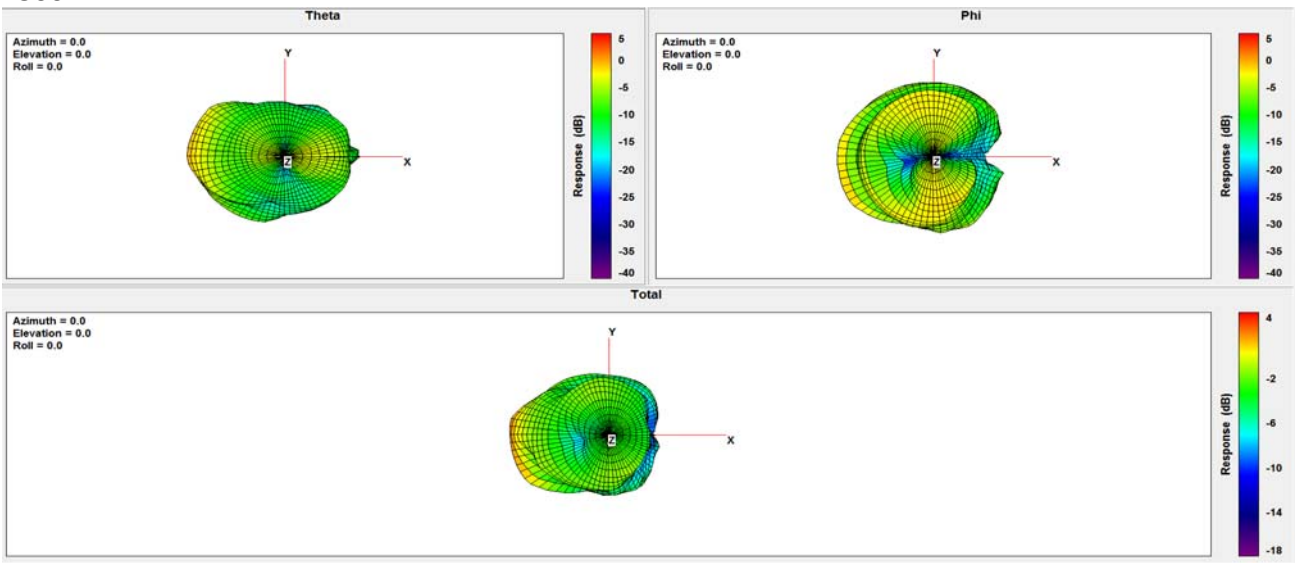
### 2400Mhz:



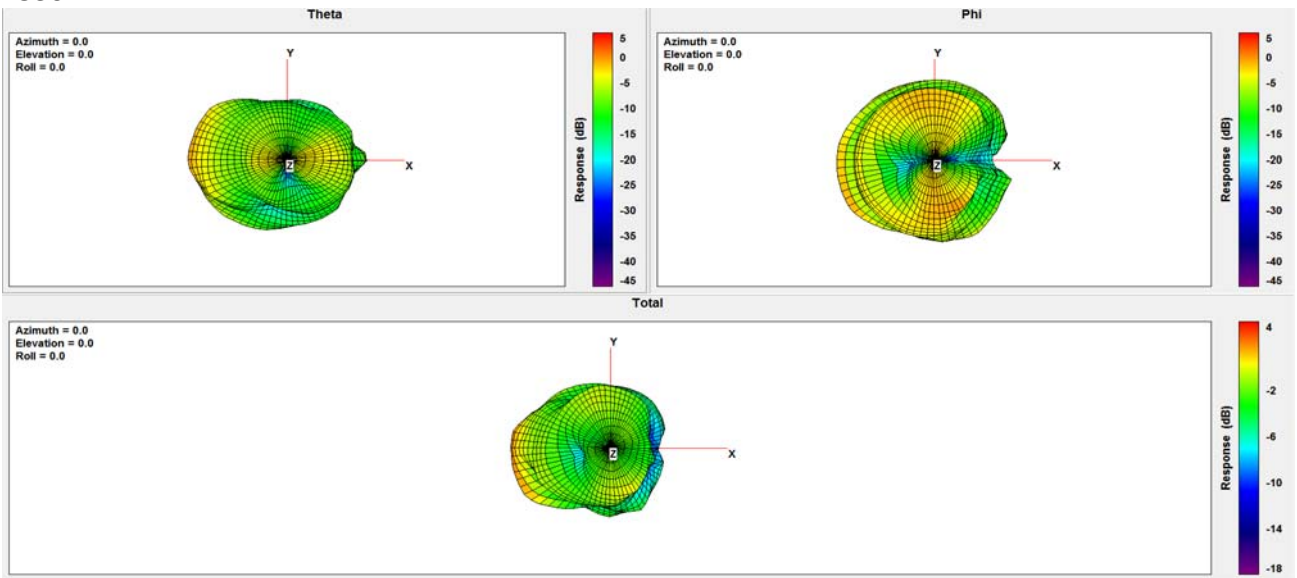
### 2450Mhz:



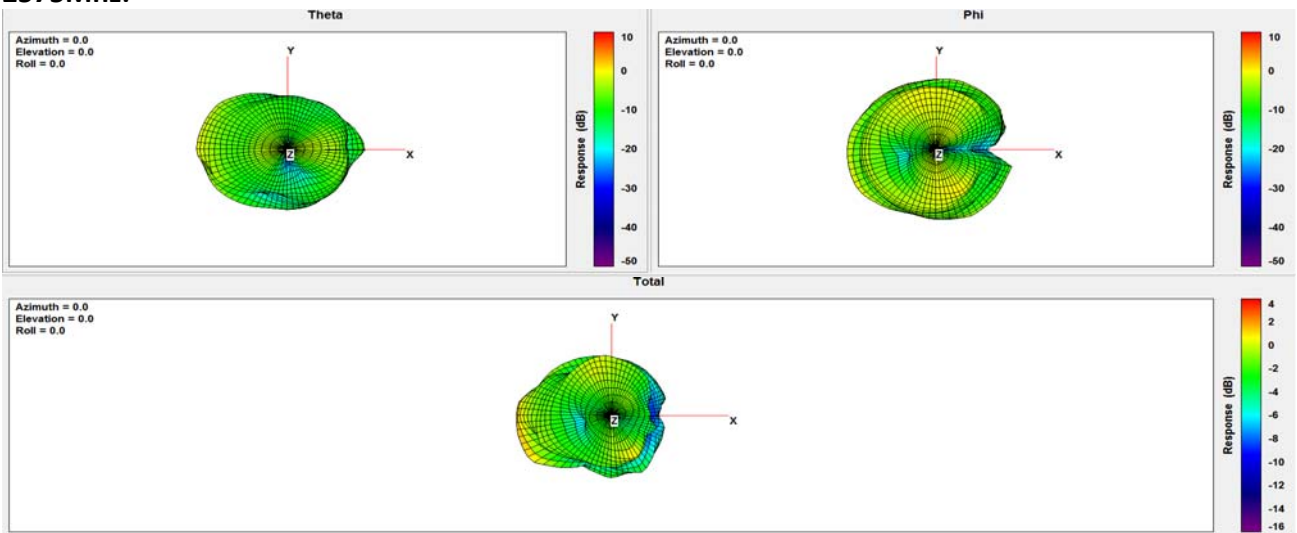
### 2500Mhz:



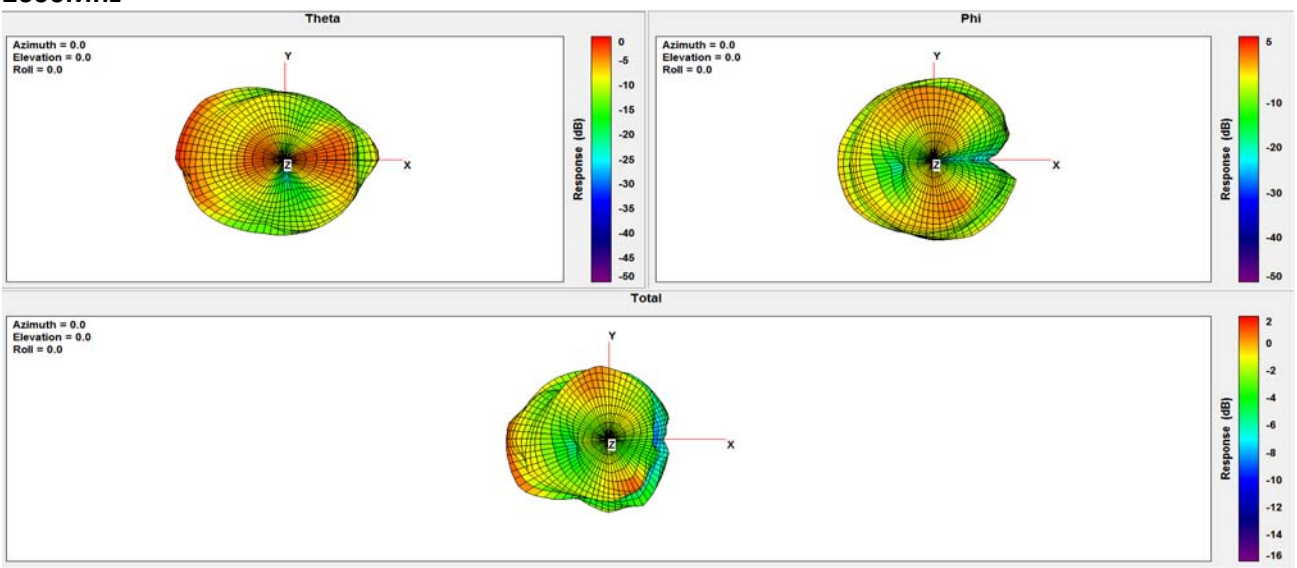
### 2530Mhz:



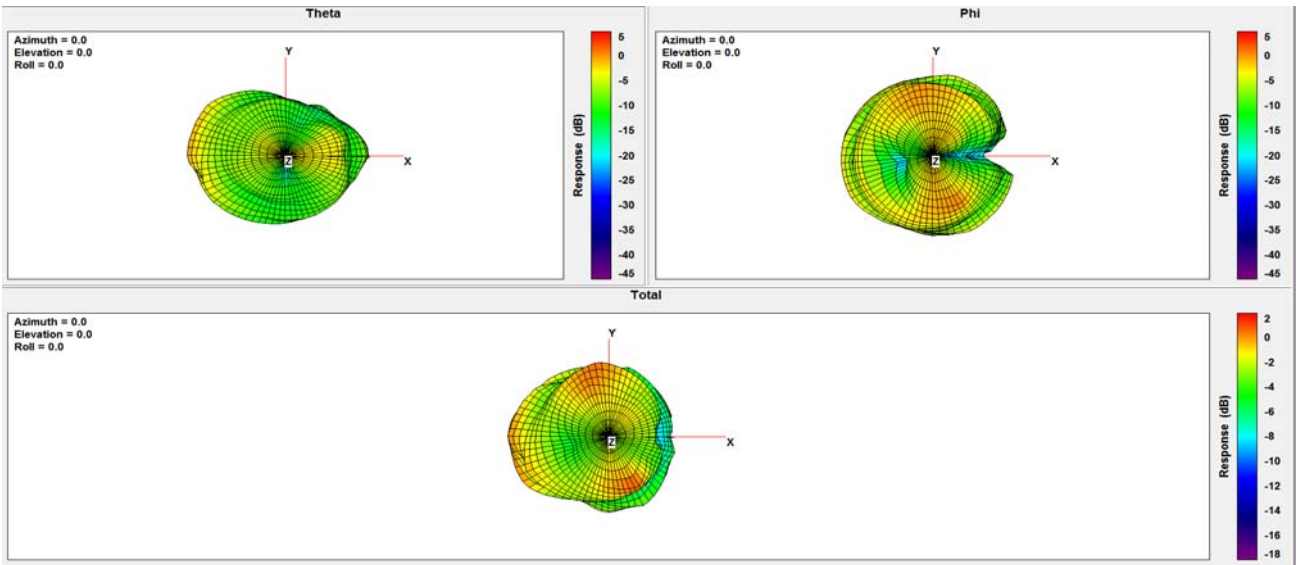
### 2575Mhz:



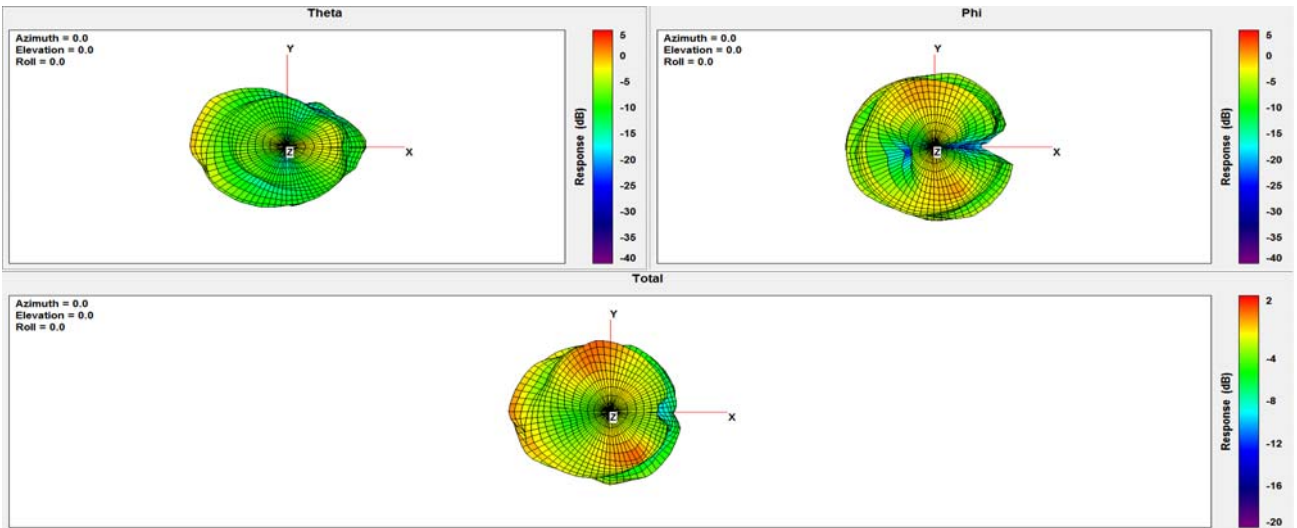
### 2600Mhz



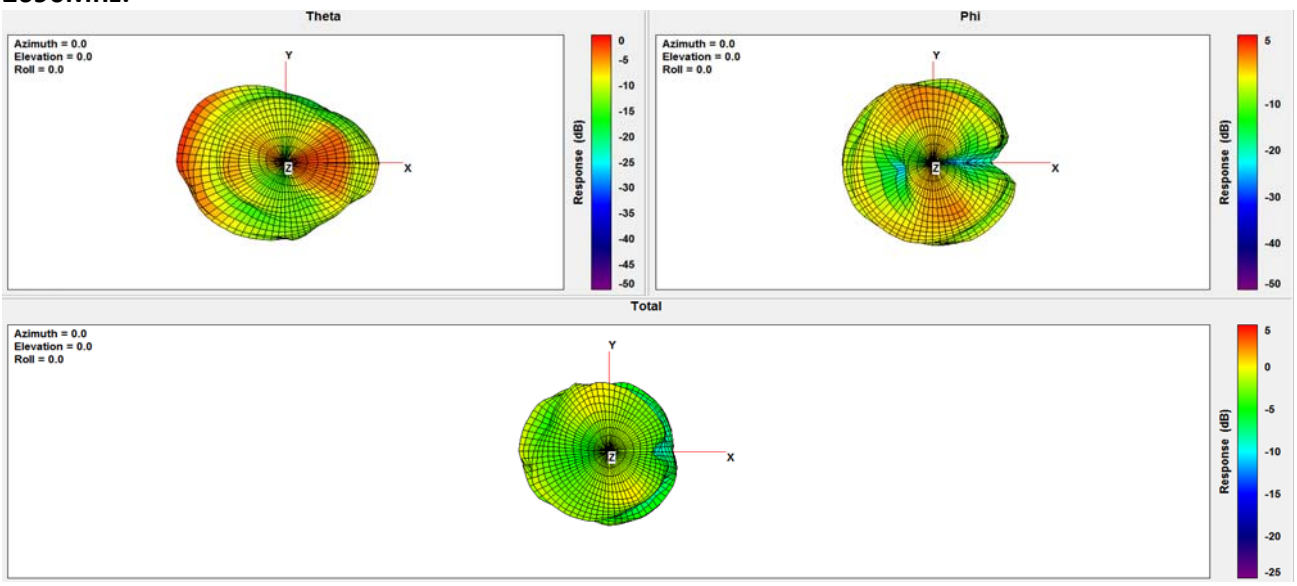
### 2625Mhz:



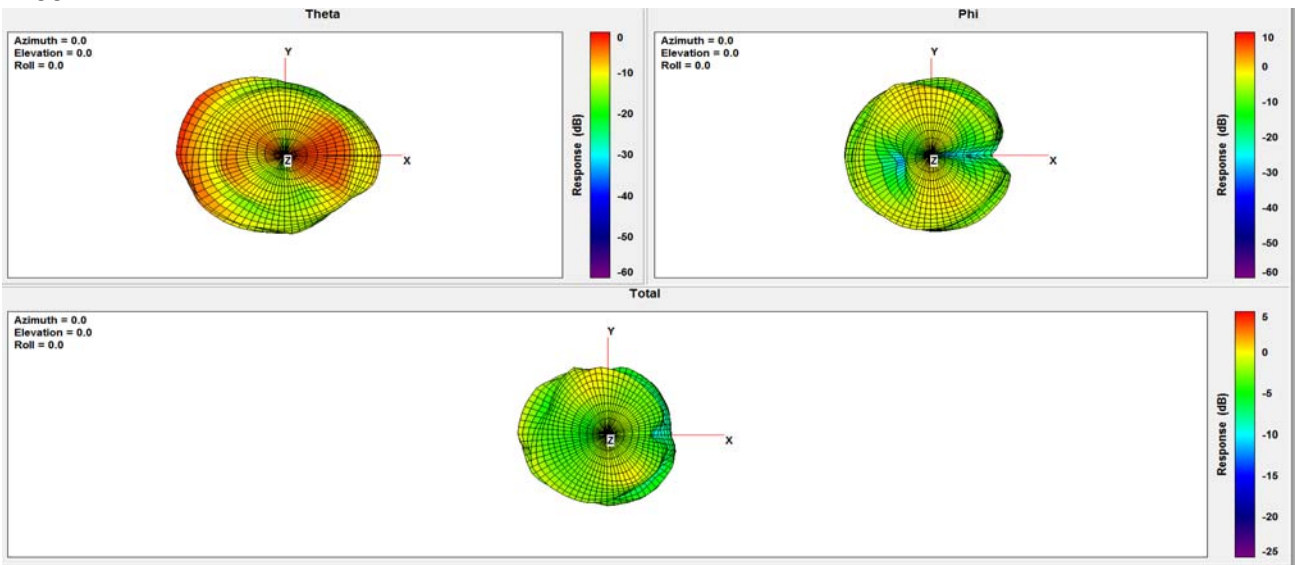
### 2650Mhz:



### 2690Mhz:



### 2700Mhz:



### 3000Mhz:

