

1.8~1.9Ghz Passive Antenna

MODEL: TH-1850



1.. GENERAL DESCRIPTION

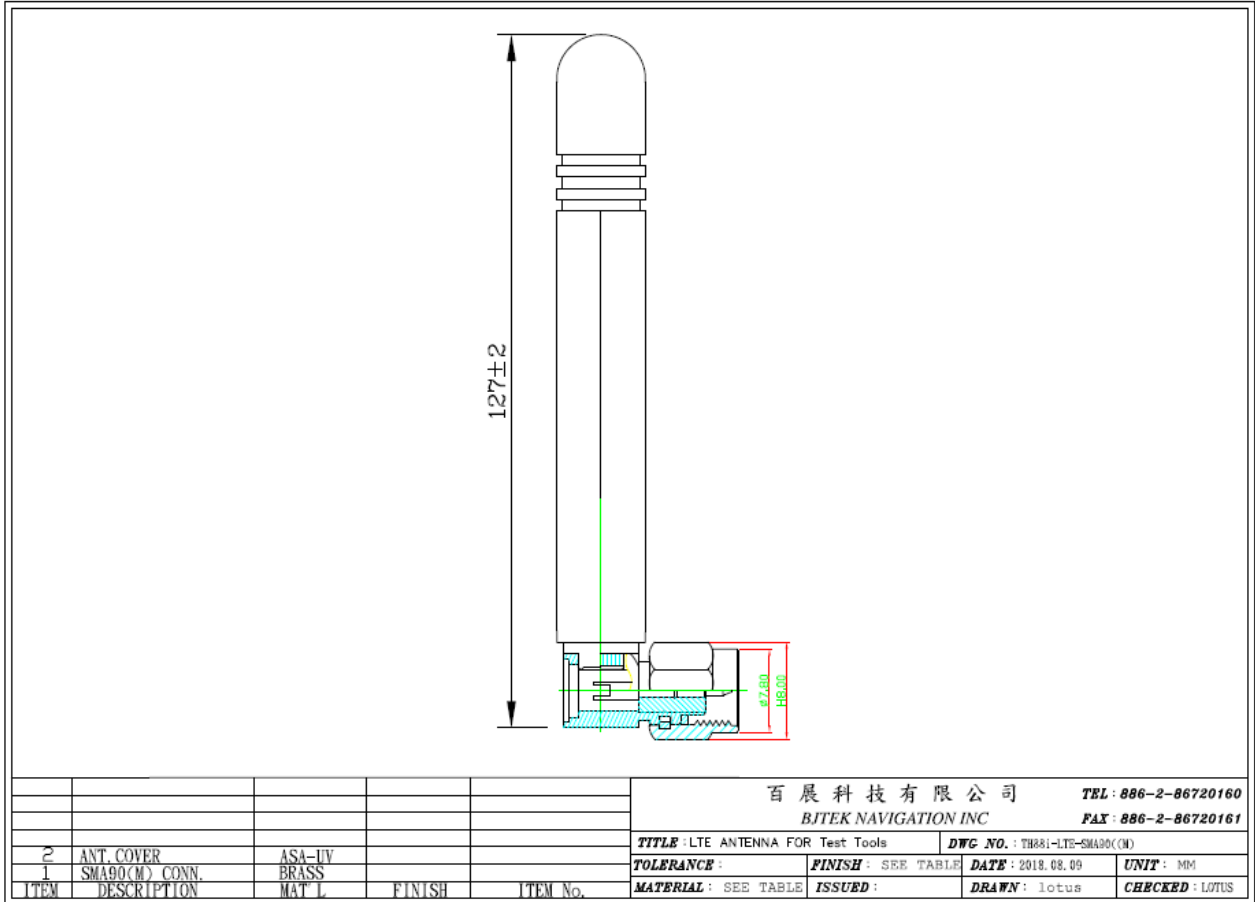
Model No	P/N
TH-1850	TH1850-SMA90(M)

1.1 Electrical Properties

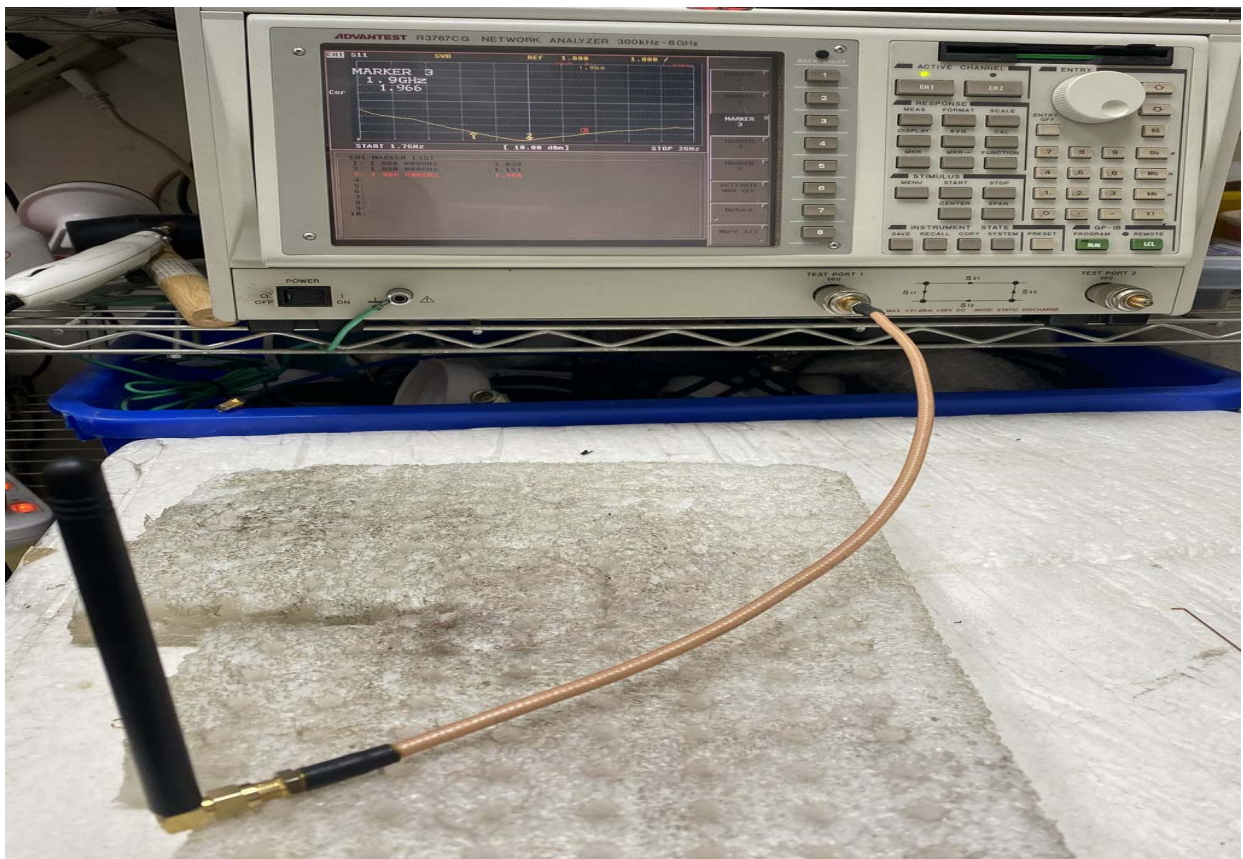
Parameter	Description
Frequency Band	1800~1900MHz
Nominal Impedance	50 ohm
Polarization	Vertical
Electrical	Dipole
Admitted Power radiation	1W
V.S.W.R	3.0:1 Max
Antenna peak Gain	0-2dB

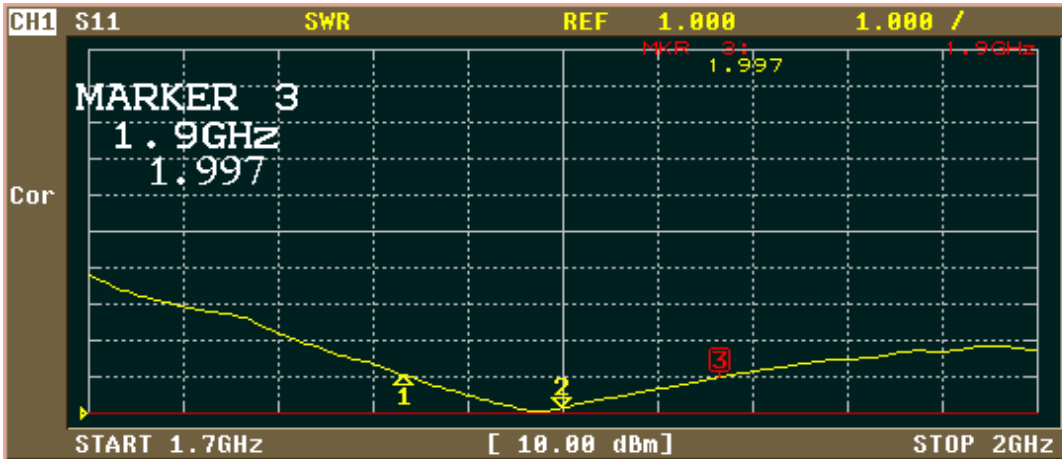
1.2 Mechanical Properties

Parameter	Description
Antenna Type	External Antenna
Material	ASA778T UV
Touch Type	Screw Type
Connector Type	SMA90 (Male)
Antenna Dimensions	OD9.4 x 127mm±2
Antenna Color	Black
Operating Temperature Range	-40°C~+85°C
Storage Temperature Range	-40°C~+85°C
Waterproof	IPX7



Test :





CH1 MARKER LIST

1:	1.800 000GHz	2.043
2:	1.850 000GHz	1.154
3:	1.900 000GHz	1.998
4:		
5:		
6:		
7:		
8:		
9:		
10:		

ACTIVATE MARKER

MARKER 1

MARKER 2

MARKER 3

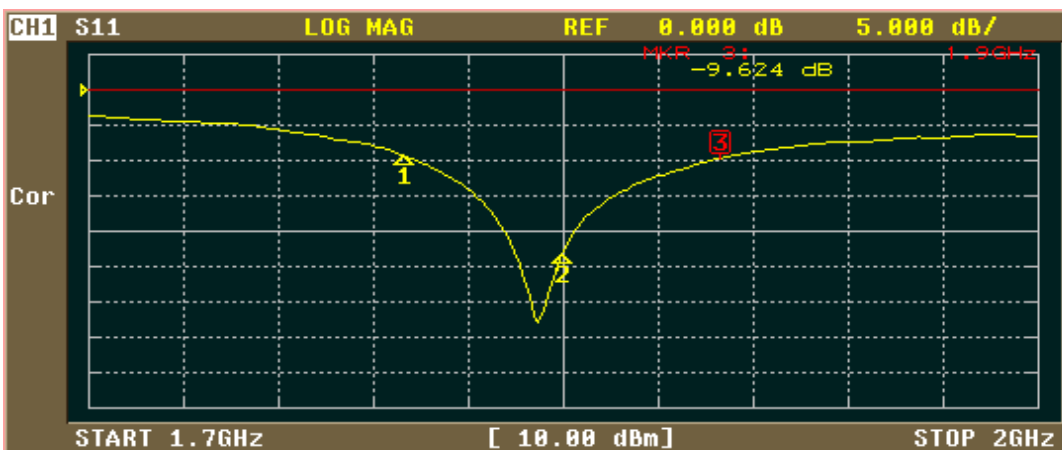
MARKER 4

MARKER 5

ACTIVATE MKR OFF

Return

More 1/2



CH1 MARKER LIST

1:	1.800 000GHz	-9.347 dB
2:	1.850 000GHz	-23.022 dB
3:	1.900 000GHz	-9.616 dB
4:		
5:		
6:		
7:		
8:		
9:		
10:		

FORMAT

LOG MAG

PHASE

DELAY

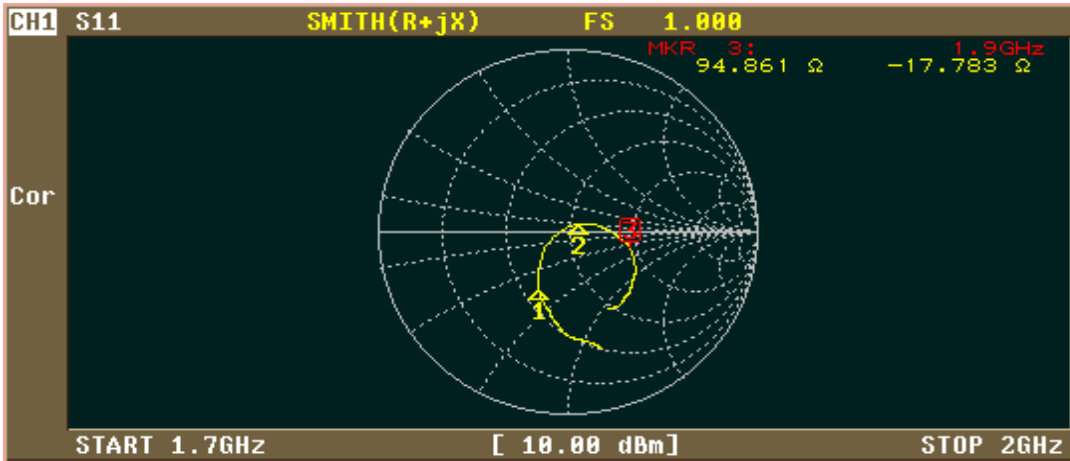
SMITH (R+jX)

SMITH (G+jB)

POLAR

LIN MAG

More 1/2



FORMAT

LOG MAG 1

PHASE 2

DELAY 3

SMITH (R+jX) 4

SMITH (G+jB) 5

POLAR 6

LIN MAG 7

More 1/2 8

CH1 MARKER LIST

1:	1.800 000GHz	30.957 Ω	-21.176 Ω	4.175pF
2:	1.850 000GHz	55.700 Ω	4.850 Ω	417.253pH
3:	1.900 000GHz	94.898 Ω	-17.766 Ω	4.714pF
4:				
5:				
6:				
7:				
8:				
9:				
10:				