

# 2400Mhz Passive Antenna

## MODEL: TH-2400E



### 1.. GENERAL DESCRIPTION

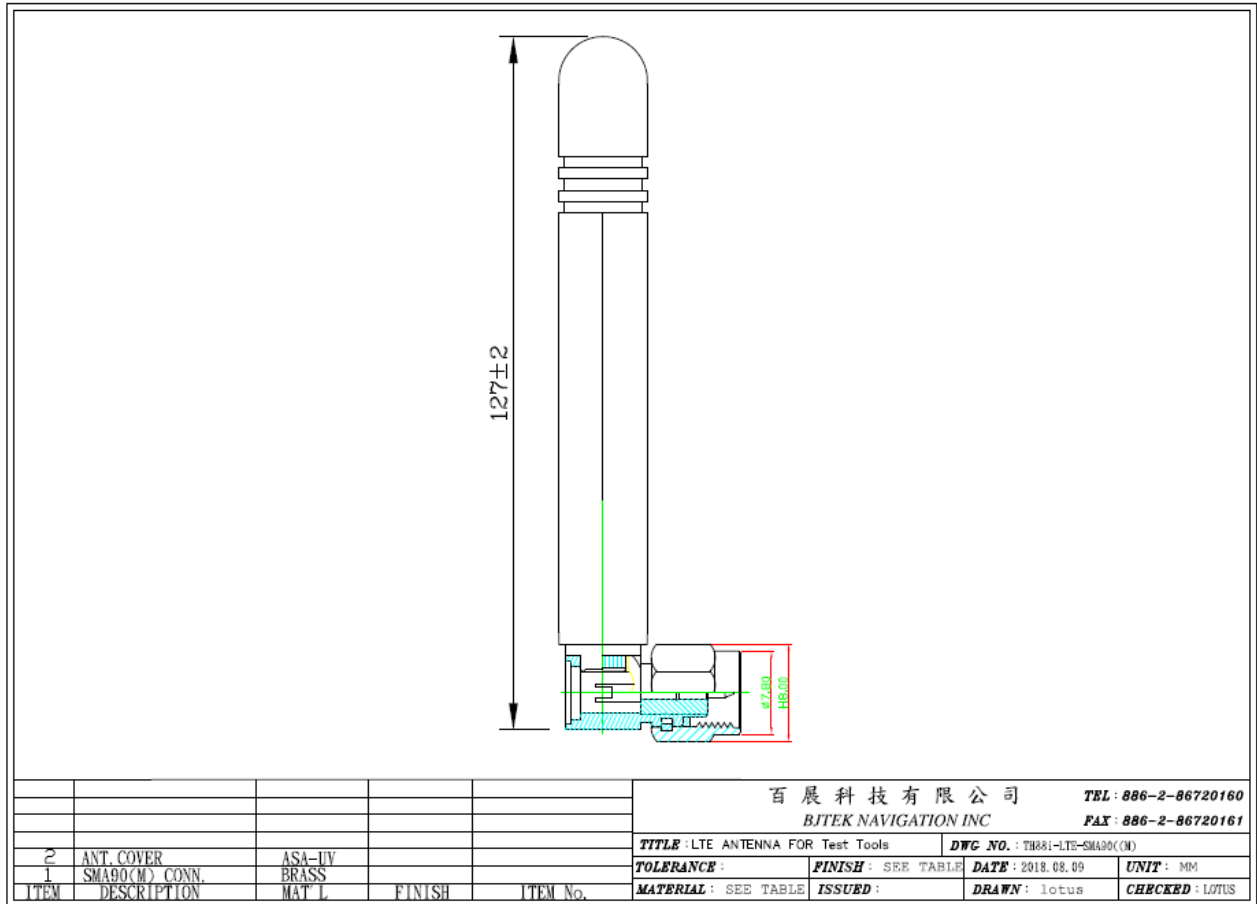
Model No	P/N
TH-2400E	TH2400E-SMA90(M)

#### 1.1 Electrical Properties

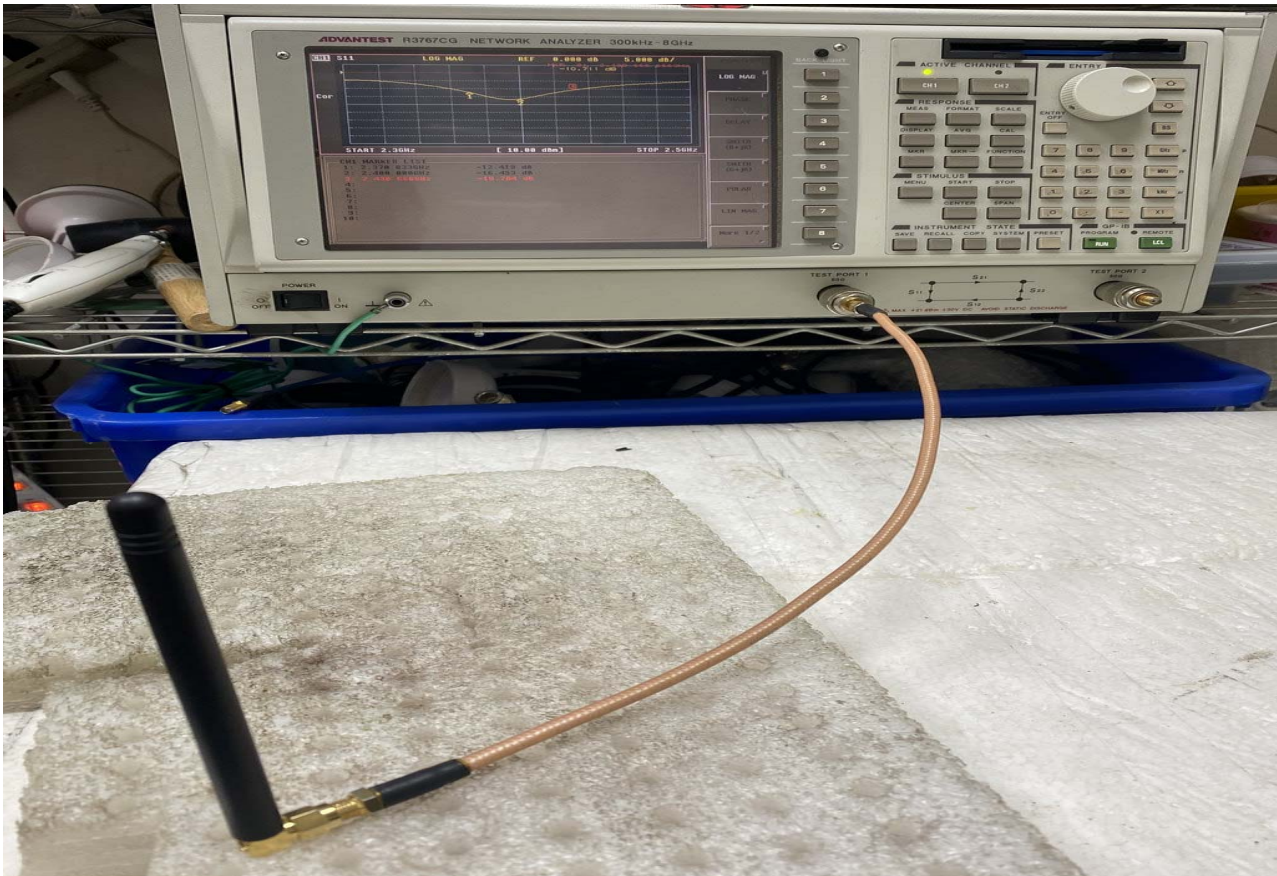
Parameter	Description
Frequency Band	2370~2430MHz
Nominal Impedance	50 ohm
Polarization	Vertical
Electrical	Dipole
Admitted Power radiation	1W
V.S.W.R	3.0:1 Max
Antenna peak Gain	0-2dB

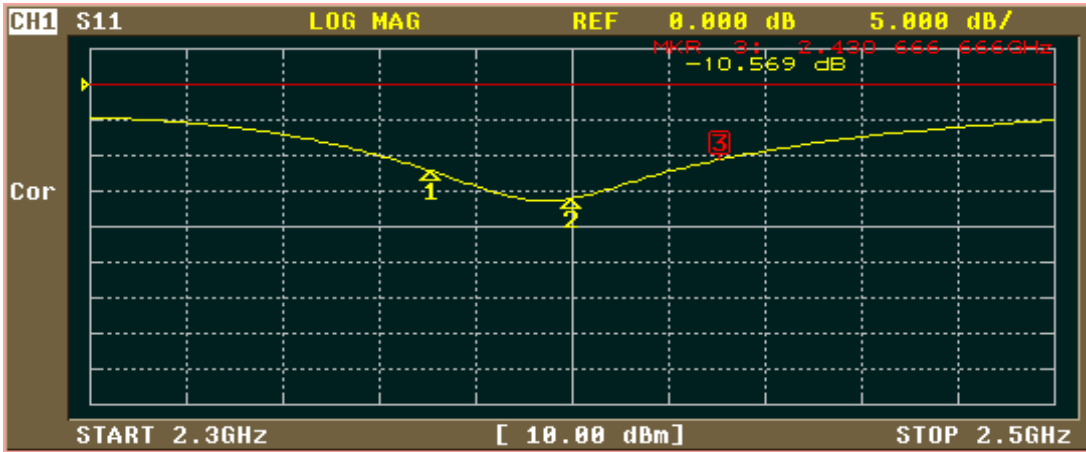
#### 1.2 Mechanical Properties

Parameter	Description
Antenna Type	External Antenna
Material	ASA778T UV
Touch Type	Screw Type
Connector Type	SMA90 (Male)
Antenna Dimensions	OD9.4 x 127mm±2
Antenna Color	Black
Operating Temperature Range	-40°C~+85°C
Storage Temperature Range	-40°C~+85°C
Waterproof	IPX7



**Test :**





CH1 MARKER LIST

1:	2.370 833GHz	-12.174 dB
2:	2.400 000GHz	-16.035 dB
3:	2.430 666GHz	-10.558 dB
4:		
5:		
6:		
7:		
8:		
9:		
10:		

FORMAT

LOG MAG <sup>1</sup>

PHASE <sup>2</sup>

DELAY <sup>3</sup>

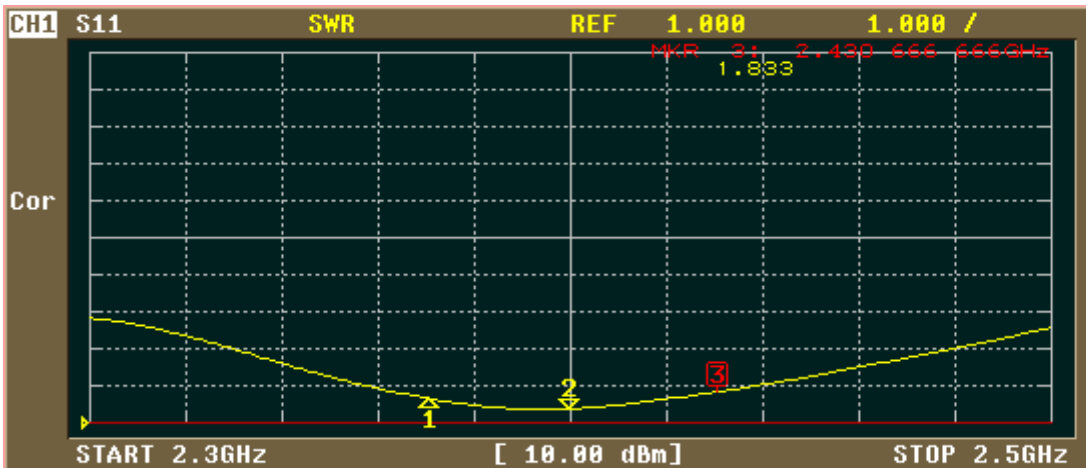
SMITH (R+jX) <sup>4</sup>

SMITH (G+jB) <sup>5</sup>

POLAR <sup>6</sup>

LIN MAG <sup>7</sup>

More 1/2 <sup>8</sup>



CH1 MARKER LIST

1:	2.370 833GHz	1.649
2:	2.400 000GHz	1.372
3:	2.430 666GHz	1.833
4:		
5:		
6:		
7:		
8:		
9:		
10:		

FORMAT

SWR <sup>1</sup>

REAL <sup>2</sup>

IMAG <sup>3</sup>

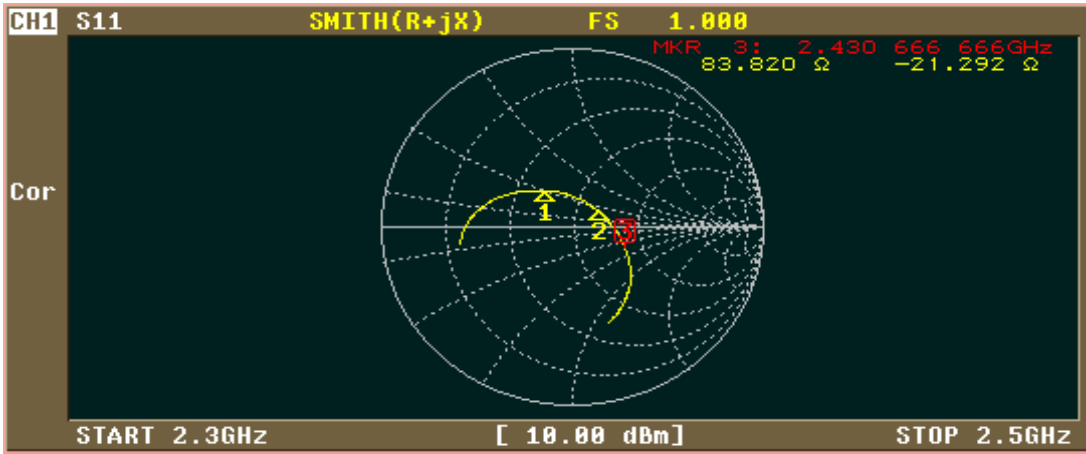
PHASE <sup>4</sup>  
-∞, +∞

LOG MAG & <sup>5</sup>  
PHASE

LOG MAG & <sup>6</sup>  
DELAY

LIN MAG & <sup>7</sup>  
PHASE

More 2/2 <sup>8</sup>



CH1 MARKER LIST

1:	2.370 833GHz	35.036 Ω	15.039 Ω	1.009nH
2:	2.400 000GHz	63.805 Ω	11.649 Ω	772.548pH
3:	2.430 666GHz	83.774 Ω	-21.257 Ω	3.080pF
4:				
5:				
6:				
7:				
8:				
9:				
10:				

- FORMAT
- LOG MAG
  - PHASE
  - DELAY
  - SMITH (R+jX)
  - SMITH (G+jB)
  - POLAR
  - LIN MAG
  - More 1/2