

Outdoor Omni 1.3G Antenna

MODEL: TH-1305

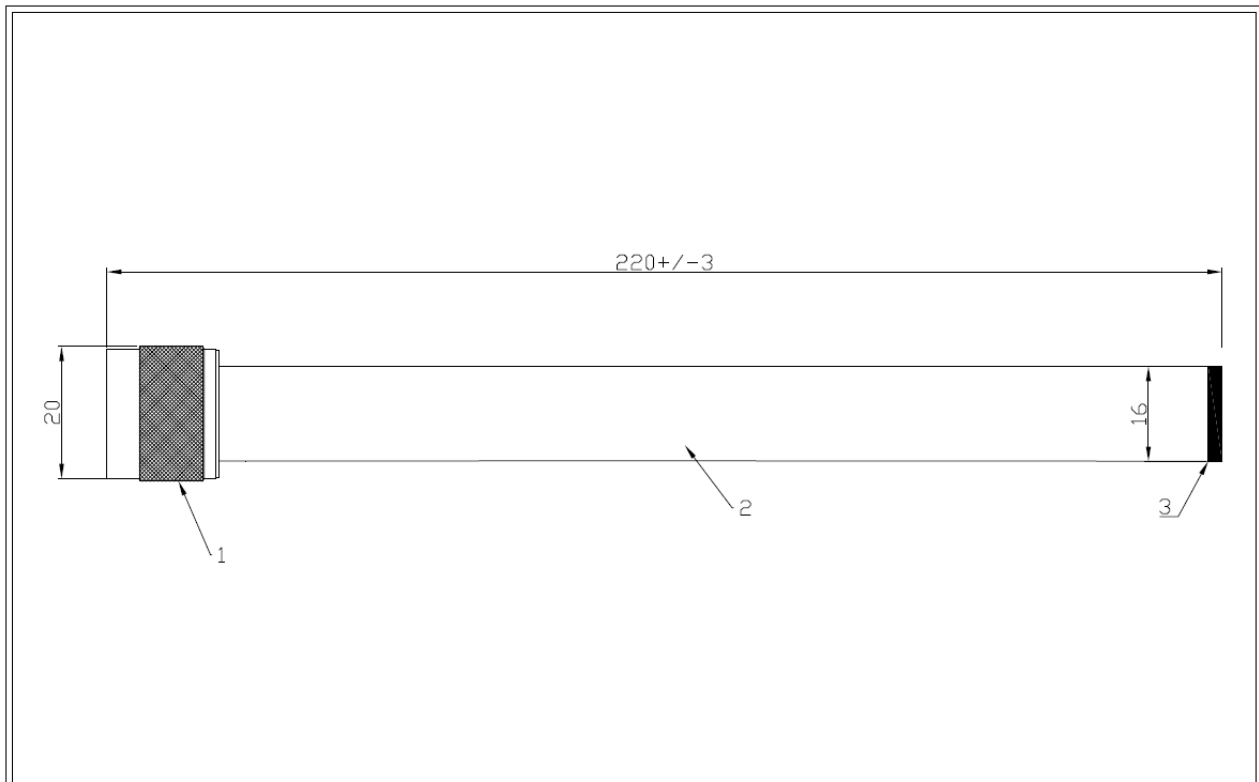


1. Electrical Properties

Parameter	Description
Frequency Band	1290-1320Mhz
Nominal Impedance	50 ohm
Polarization	Vertical
Electrical Wave	Dipole
Return Loss	Please See Data-1
V.S.W.R	2.0:1
Antenna Peak Gain	

2. Mechanical Properties

Parameter	Description
Antenna Type	External Antenna
Connector Type	N(M)
Antenna Dimensions	220 mm \pm 3
Antenna Color	ASA-UV-Black
Operating Temperature Range	-40°C~+80°C
Storage Temperature Range	-40°C~+80°C
Waterproof	IPX7



6									
5									
4									
3	ASA Black cap								
2	ASA Black tube								
1	N(M) Connector								
ITEM	DESCRIPTION	MAT'L	FINISH	ITEM No.	百展科技有限公司 BJTEK NAVIGATION INC		TEL: 886-2-86720160 FAX: 886-2-86720161	TITLE: 1.3G Antenna DWG NO.: TH-1305-N(M)	
					TOLERANCE: AS SPEC.	FINISH: SEE TABLE	DATE: 2020.07.13	UNIT: MM	
					MATERIAL: SEE TABLE	ISSUED: BILL	DRAWN: ALAN	CHECKED: LOUIS	



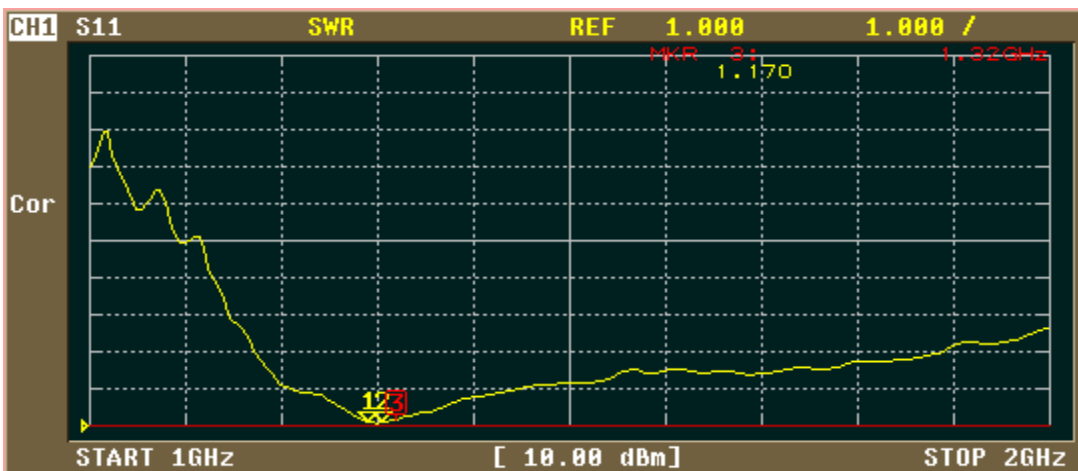


CH1 MARKER LIST

1:	1.290 000GHz	-24.665 dB
2:	1.305 000GHz	-27.898 dB
3:	1.320 000GHz	-21.512 dB
4:		
5:		
6:		
7:		
8:		
9:		
10:		

FORMAT

- LOG MAG ¹
- PHASE ²
- DELAY ³
- SMITH (R+jX) ⁴
- SMITH (G+jB) ⁵
- POLAR ⁶
- LIN MAG ⁷
- More 1/2 ⁸



CH1 MARKER LIST

1:	1.290 000GHz	1.124
2:	1.305 000GHz	1.079
3:	1.320 000GHz	1.170
4:		
5:		
6:		
7:		
8:		
9:		
10:		

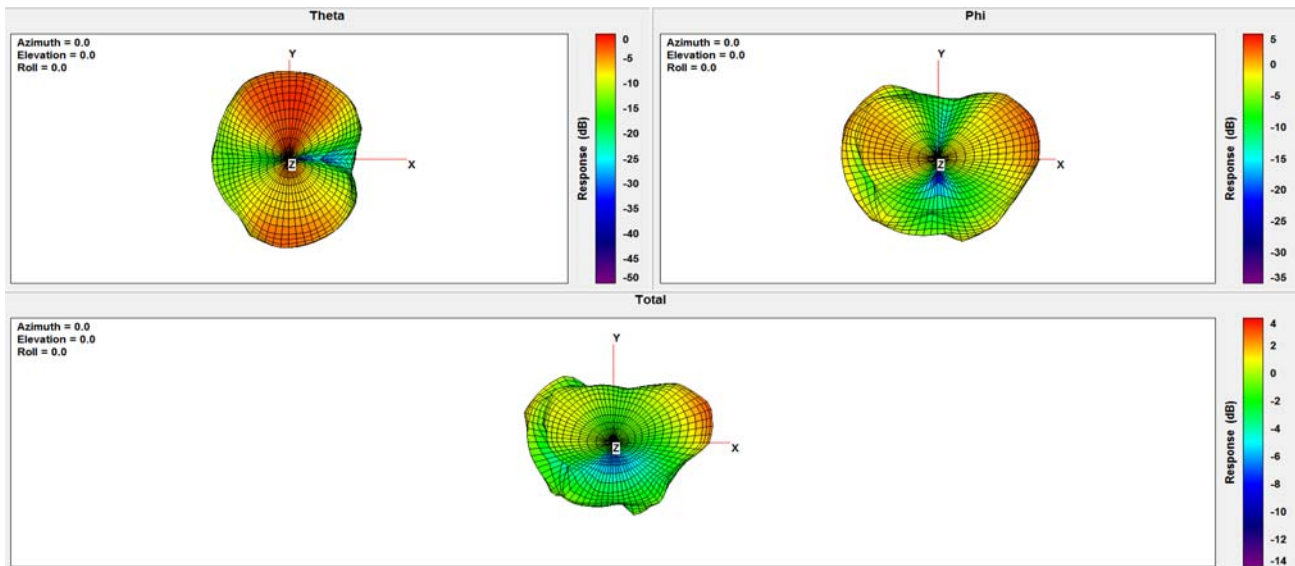
FORMAT

- SWR ¹
- REAL ²
- IMAG ³
- PHASE -∞, +∞ ⁴
- LOG MAG & PHASE ⁵
- LOG MAG & DELAY ⁶
- LIN MAG & PHASE ⁷
- More 2/2 ⁸

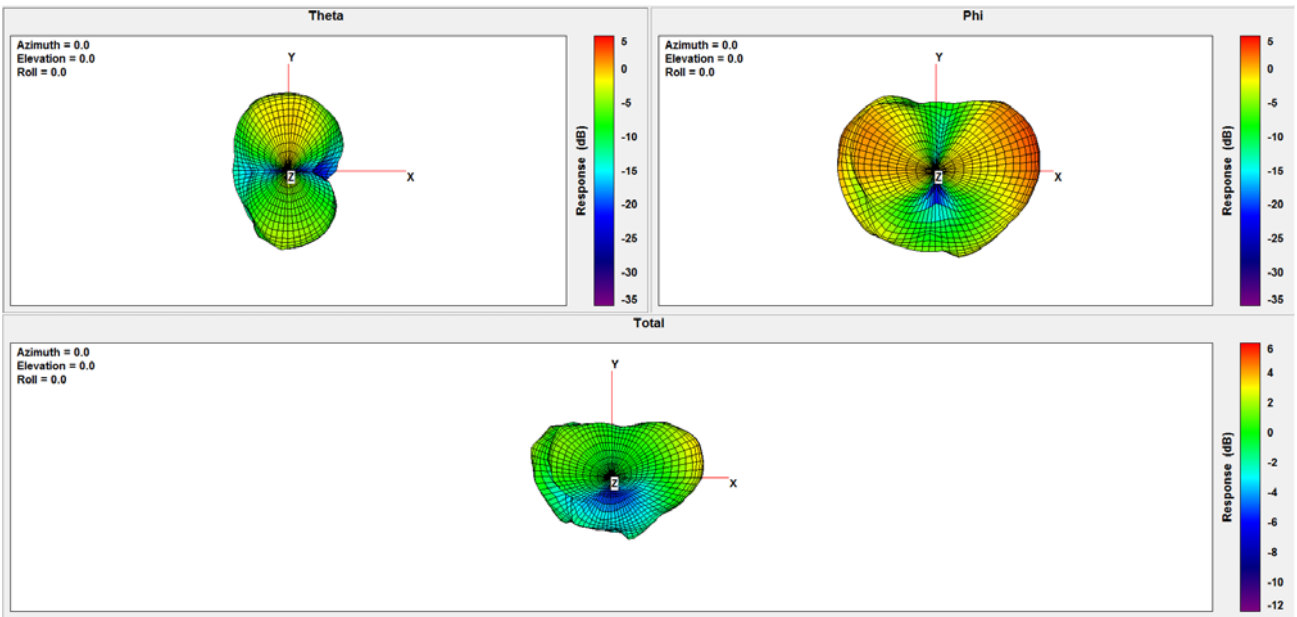


Frequency (MHz)	1200	1250	1290	1300	1305	1320	1350	1400
Peak Gain (dBi)	3.32	4.04	3.47	3.30	3.21	3.06	2.68	1.72
Efficiency (%)	78.86	86.97	82.98	80.22	78.29	76.27	68.89	59.06

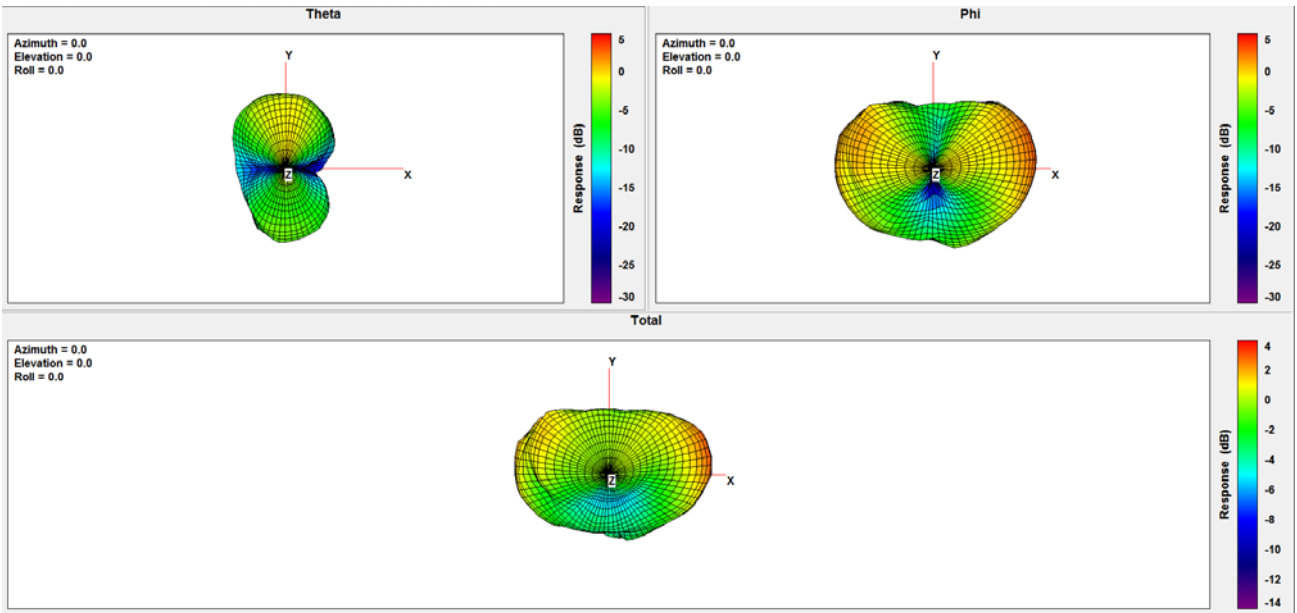
1200MHz:



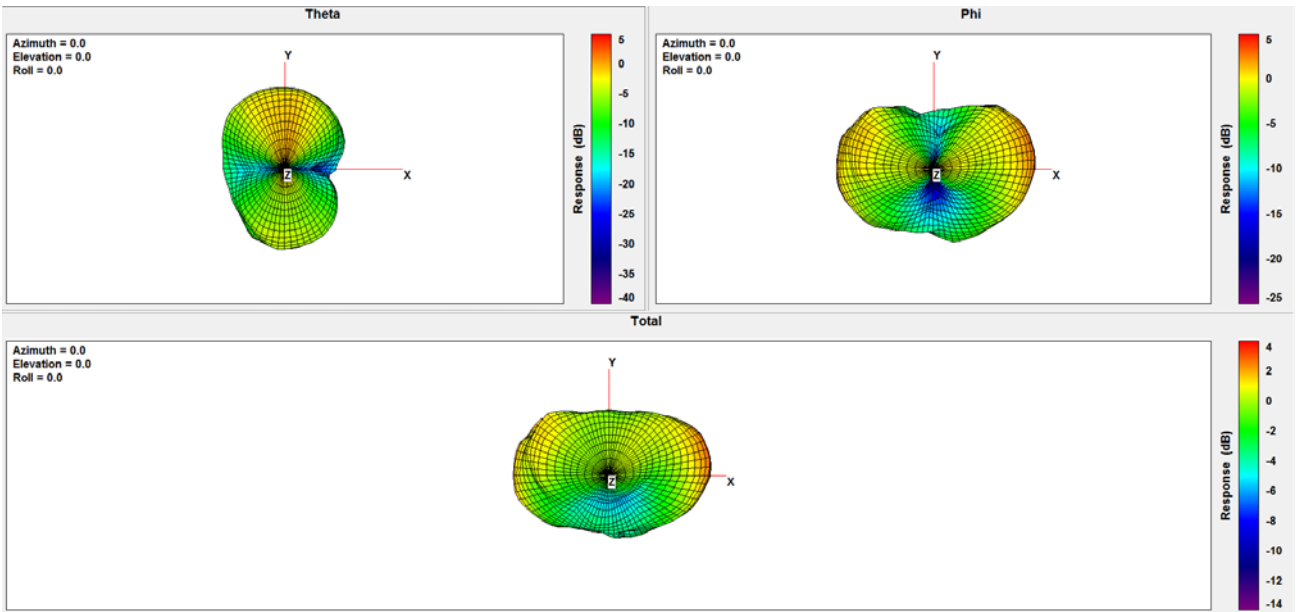
1250Mhz:



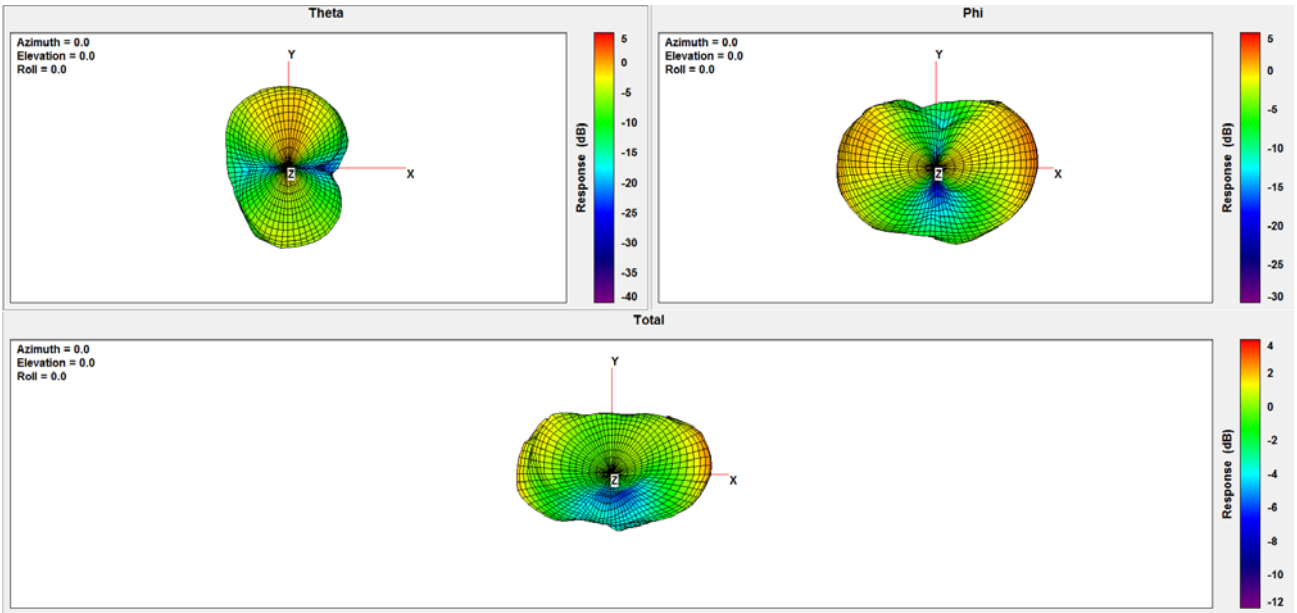
1290Mhz:



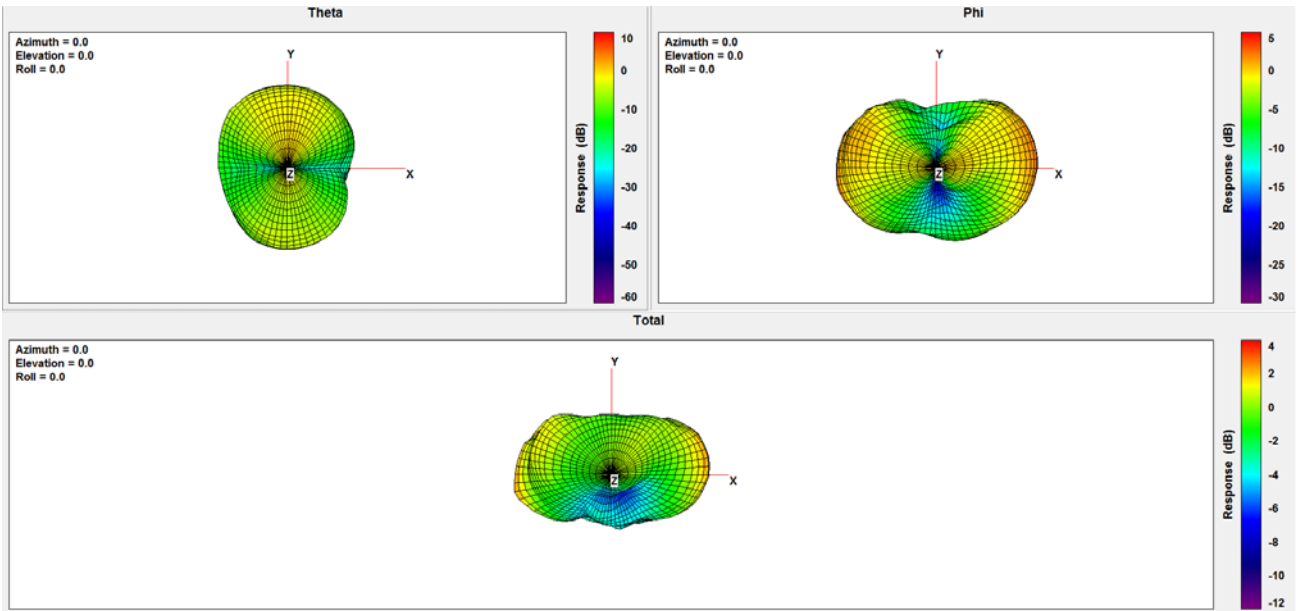
1300Mhz:



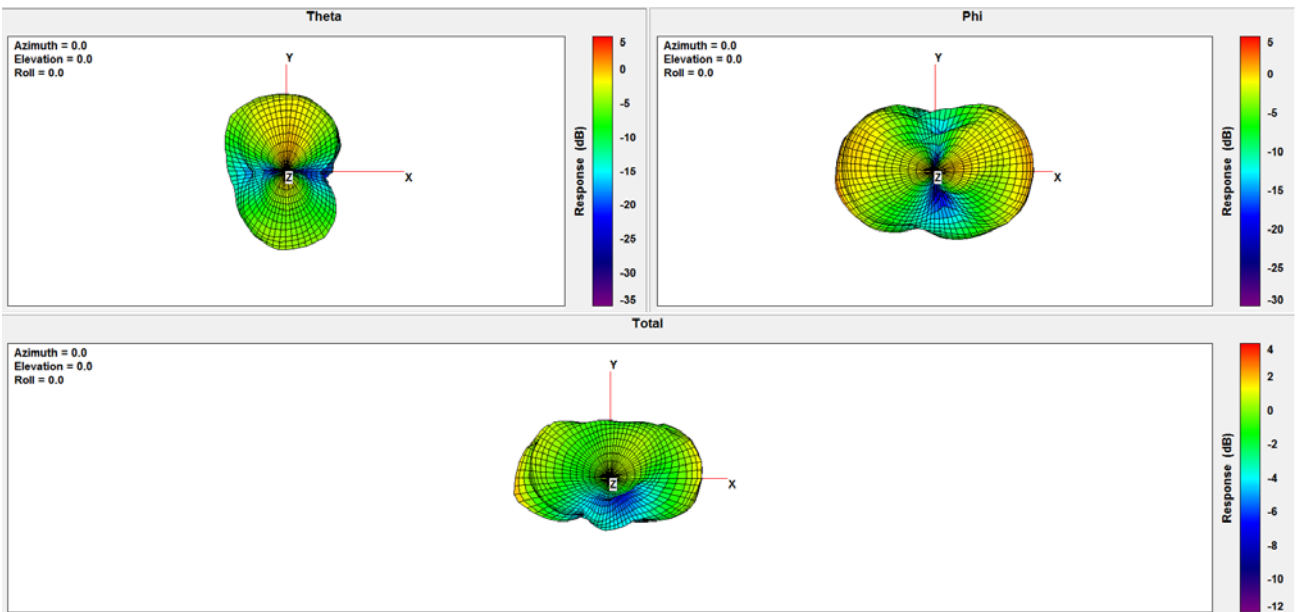
1305Mhz:



1320Mhz:



1350Mhz:



1400Mhz:

