

Outdoor Omni 1.7~2.7G Antenna

MODEL: TH-2200

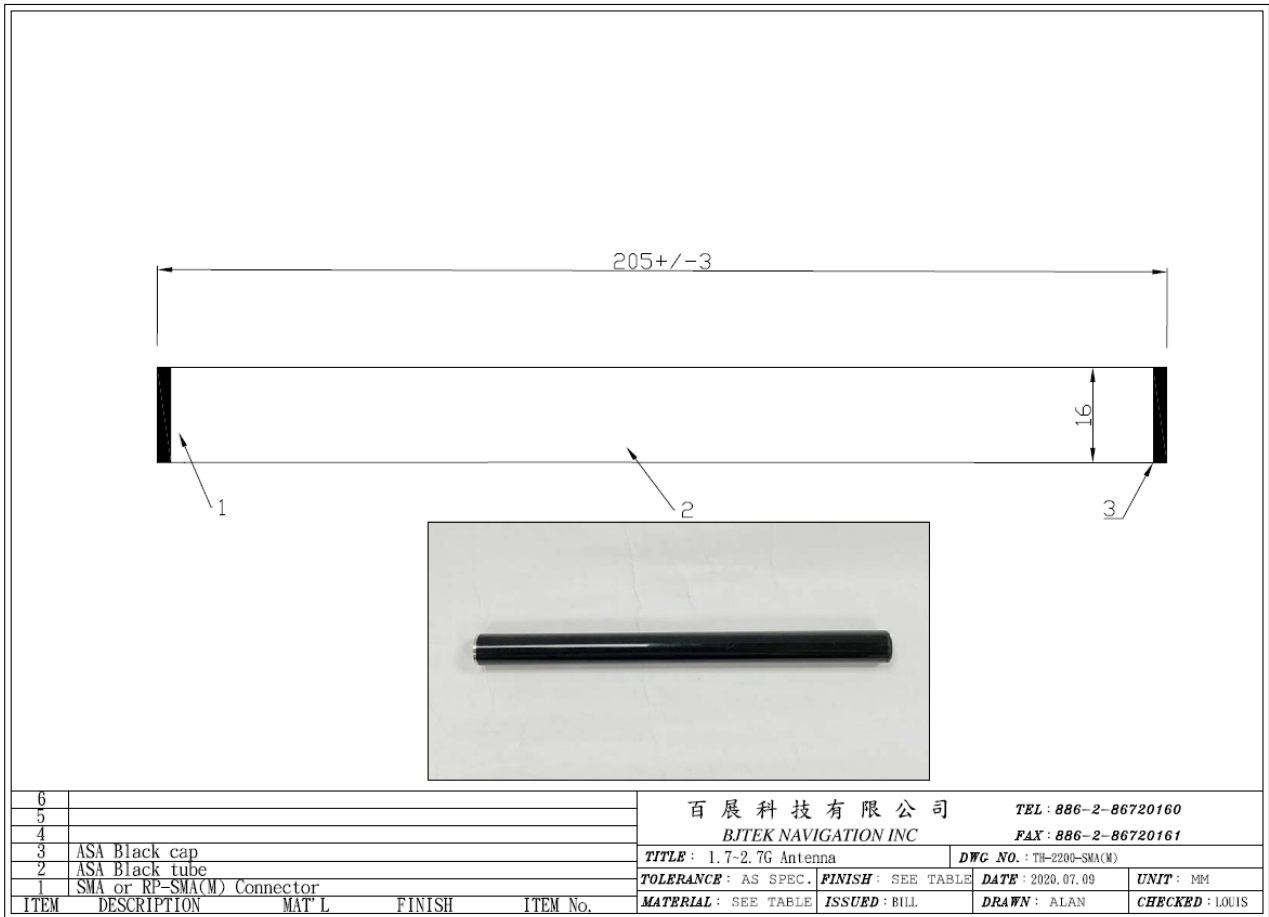


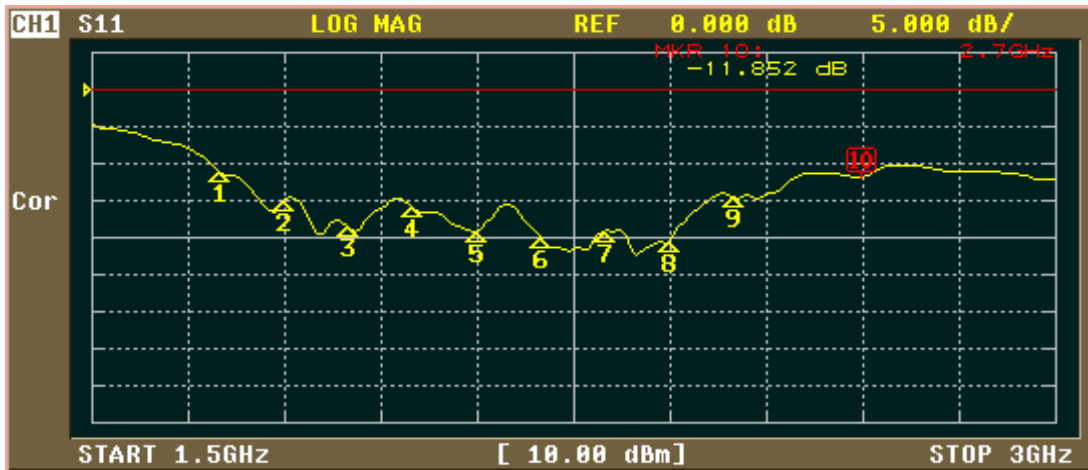
1. Electrical Properties

Parameter	Description
Frequency Band	1700-2700Mhz
Nominal Impedance	50 ohm
Polarization	Vertical
Electrical Wave	Dipole
Return Loss	Please See Data-1
V.S.W.R	2.0:1
Antenna Peak Gain	3dBi

2. Mechanical Properties

Parameter	Description
Antenna Type	External Antenna
Connector Type	SMA or RP-SMA(M)
Antenna Dimensions	205 mm \pm 3
Antenna Color	ASA-UV-Black
Operating Temperature Range	-40°C~+80°C
Storage Temperature Range	-40°C~+80°C
Waterproof	IPX7





FORMAT

LOG MAG 1

PHASE 2

DELAY 3

SMITH (R+jX) 4

SMITH (G+jB) 5

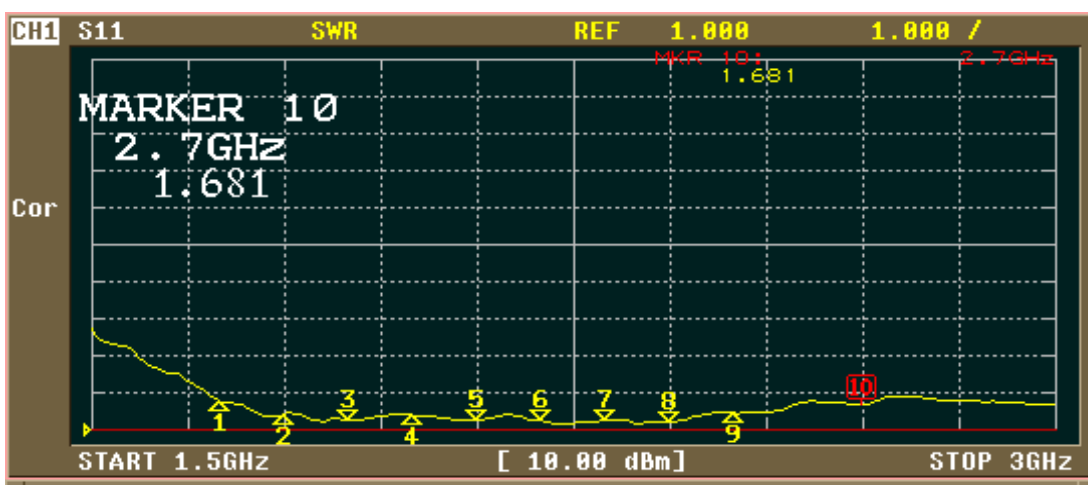
POLAR 6

LIN MAG 7

More 1/2 8

CH1 MARKER LIST

1:	1.700 000GHz	-11.023 dB
2:	1.800 000GHz	-14.965 dB
3:	1.900 000GHz	-18.529 dB
4:	2.000 000GHz	-15.947 dB
5:	2.100 000GHz	-19.147 dB
6:	2.200 000GHz	-20.015 dB
7:	2.300 000GHz	-19.108 dB
8:	2.400 000GHz	-20.568 dB
9:	2.500 000GHz	-14.636 dB
10:	2.700 000GHz	-11.852 dB



ACTIVATE MARKER

MARKER 6 1

MARKER 7 2

MARKER 8 3

MARKER 9 4

MARKER 10 5

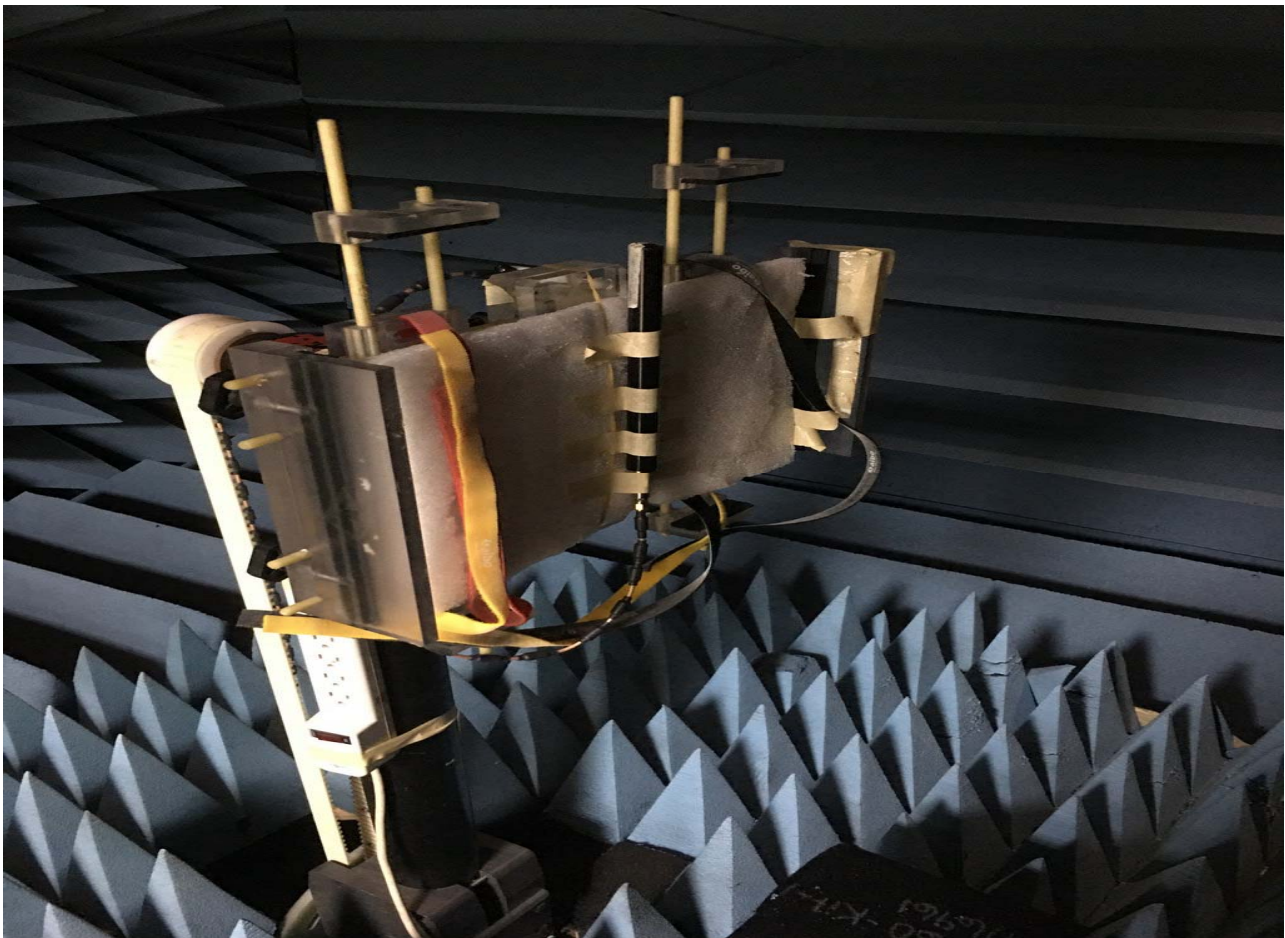
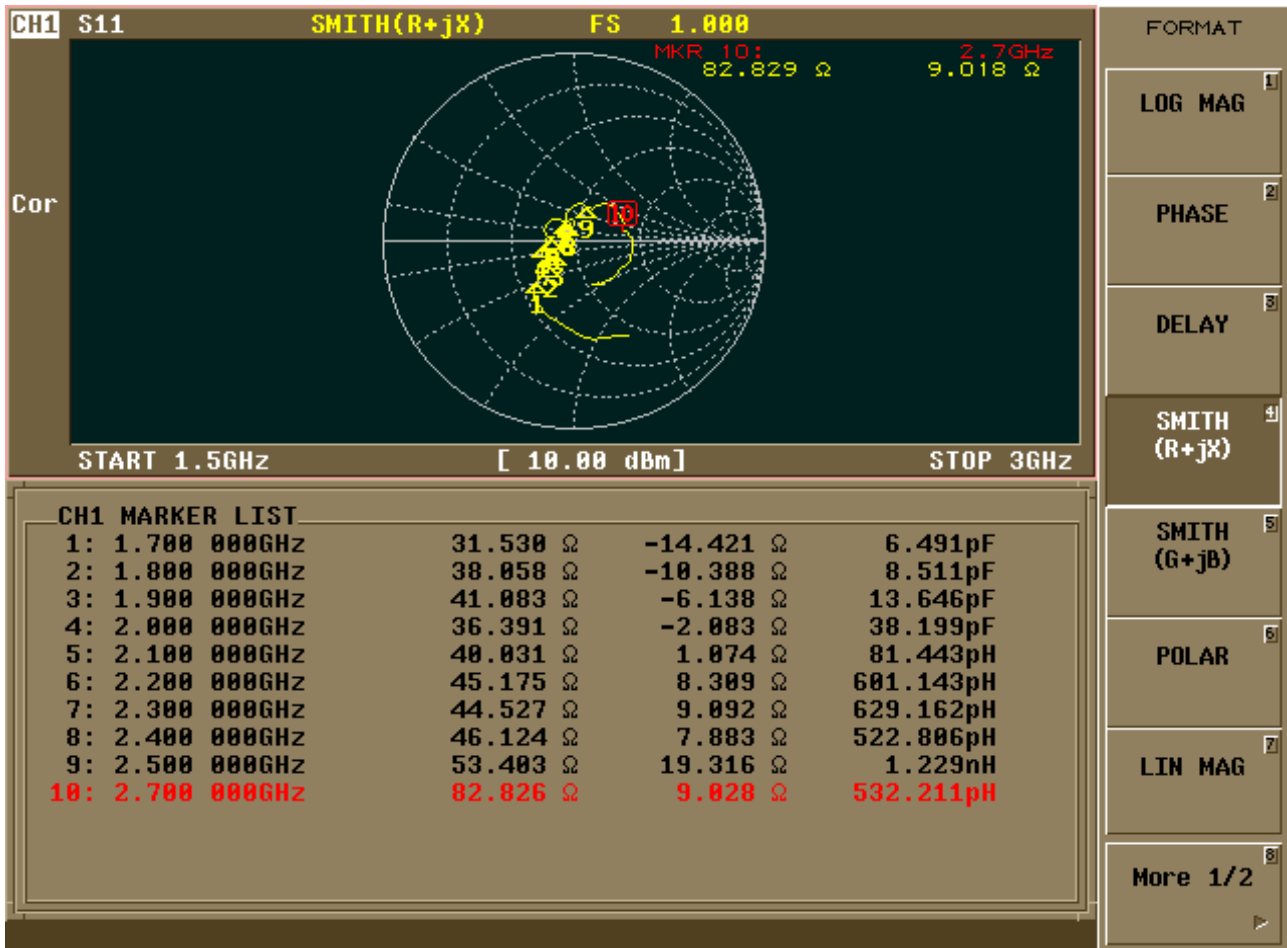
ACTIVATE MKR OFF 6

Return 7

More 2/2 8

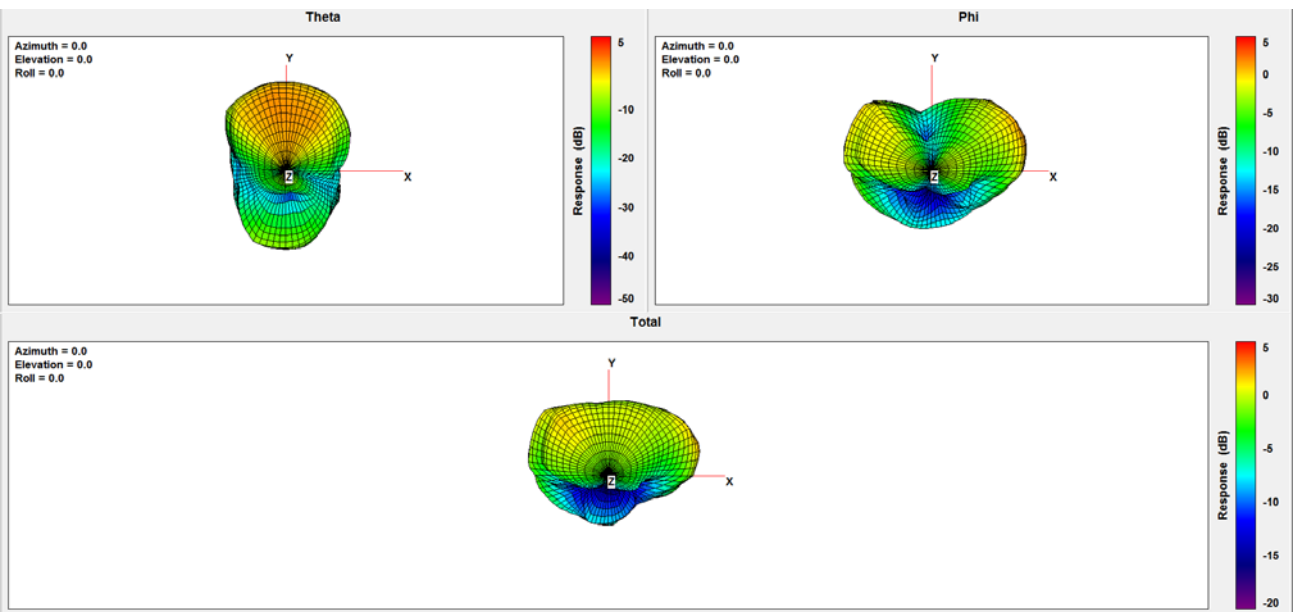
CH1 MARKER LIST

1:	1.700 000GHz	1.781
2:	1.800 000GHz	1.432
3:	1.900 000GHz	1.266
4:	2.000 000GHz	1.380
5:	2.100 000GHz	1.253
6:	2.200 000GHz	1.232
7:	2.300 000GHz	1.242
8:	2.400 000GHz	1.201
9:	2.500 000GHz	1.457
10:	2.700 000GHz	1.681

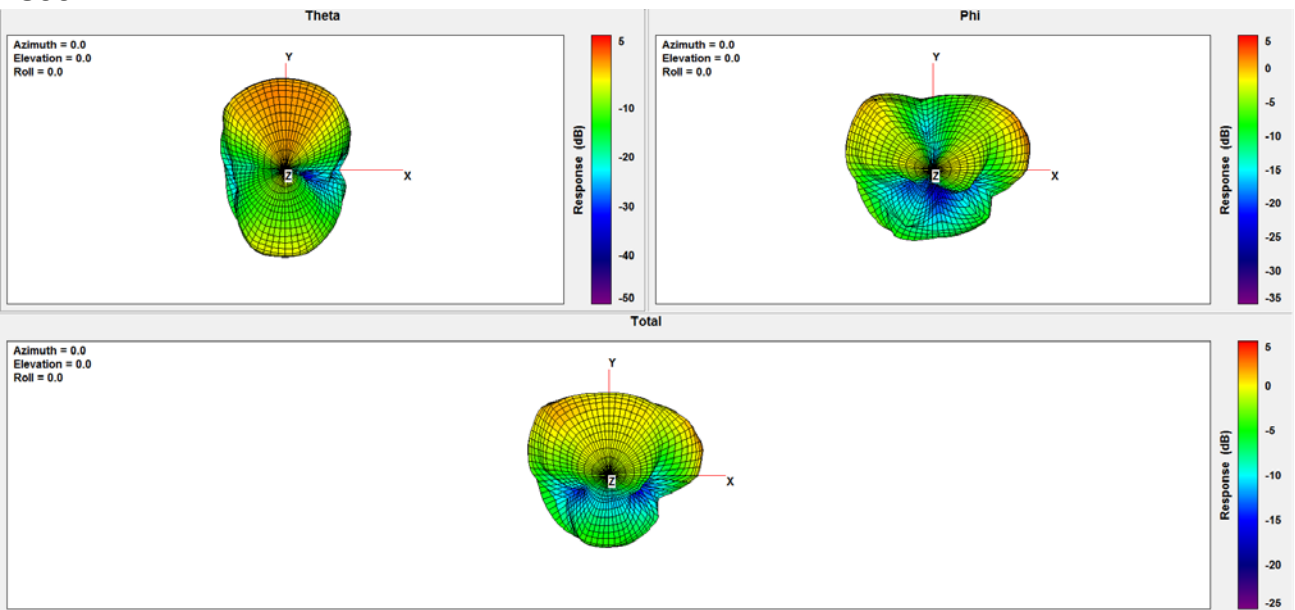


Frequency (MHz)	1700	1800	1900	2000	2100	2200	2300	2400	2500	2600	2700	2800	2900	3000
Peak Gain (dBi)	2.59	2.78	3.44	2.47	2.23	2.94	3.23	3.83	1.99	3.56	3.19	2.25	2.60	4.51
Efficiency (%)	55.56	58.29	62.83	51.93	56.27	70.10	64.64	68.21	38.70	57.25	56.33	54.30	52.74	60.85

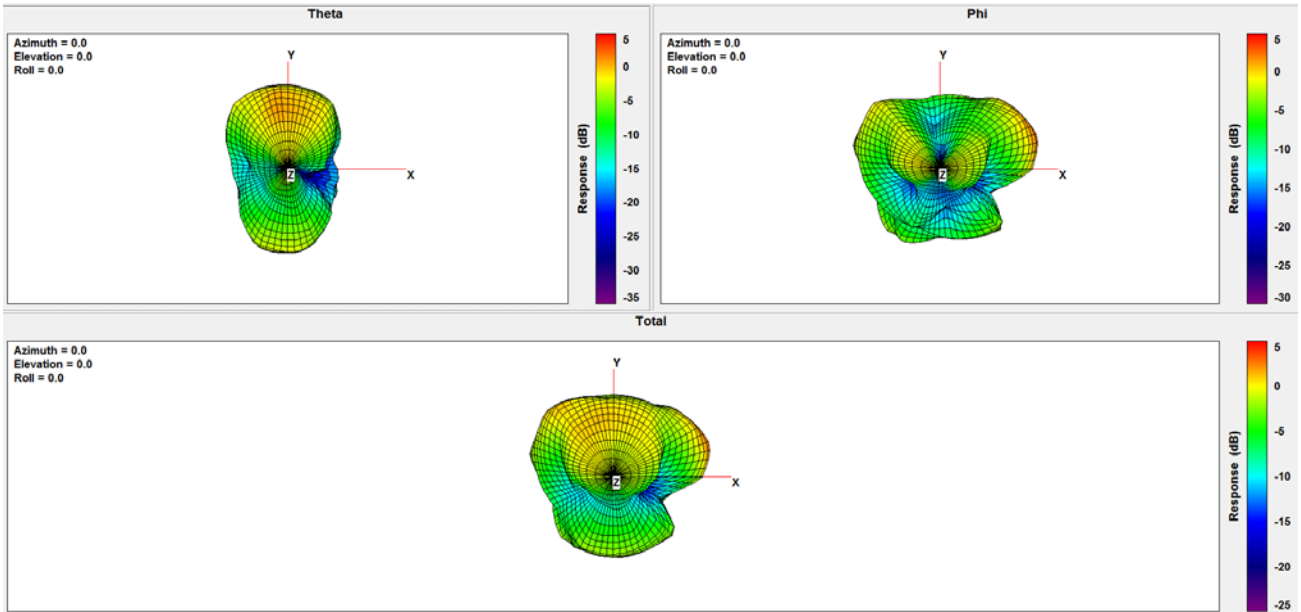
1700MHz:



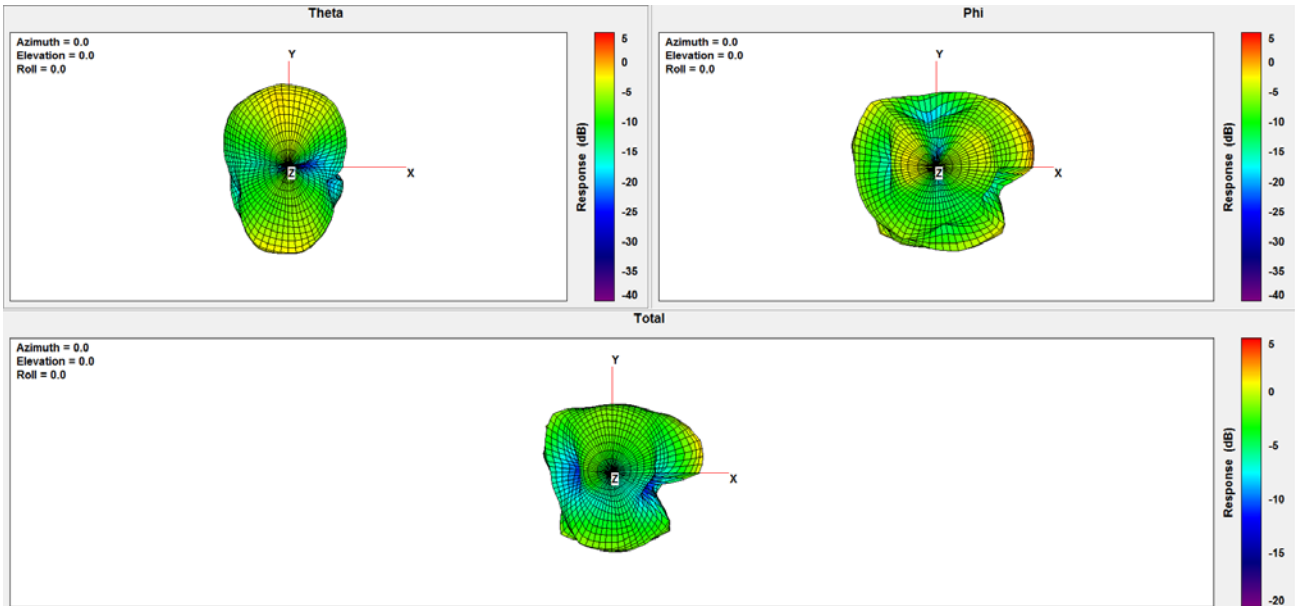
1800MHz:



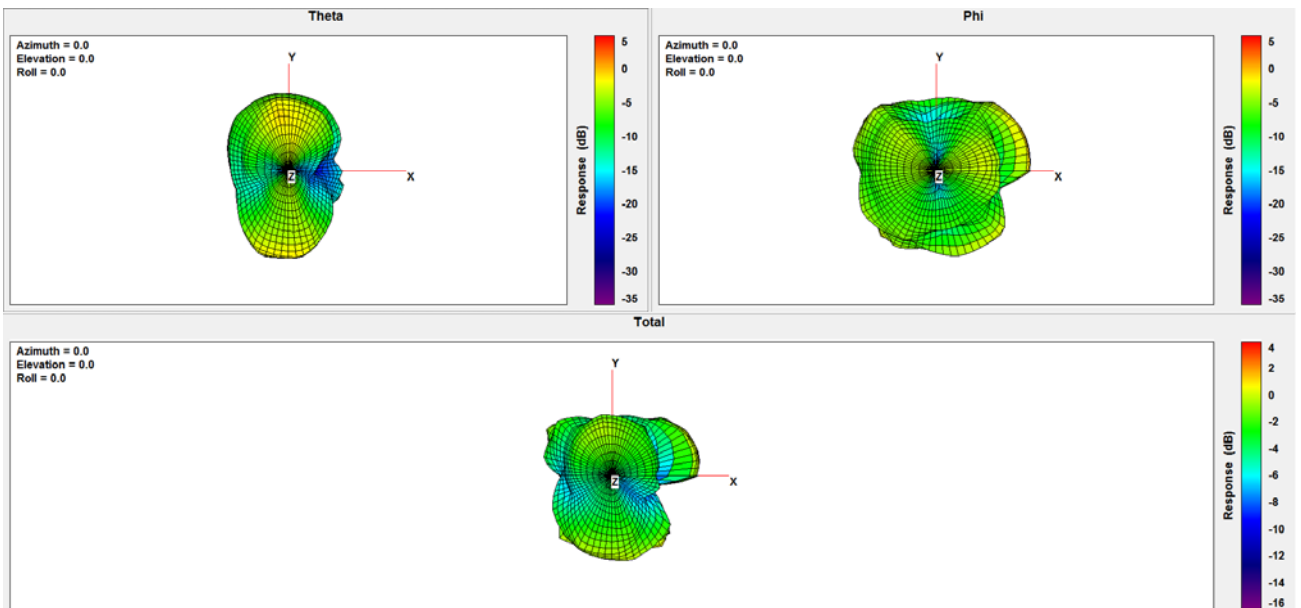
1900Mhz:



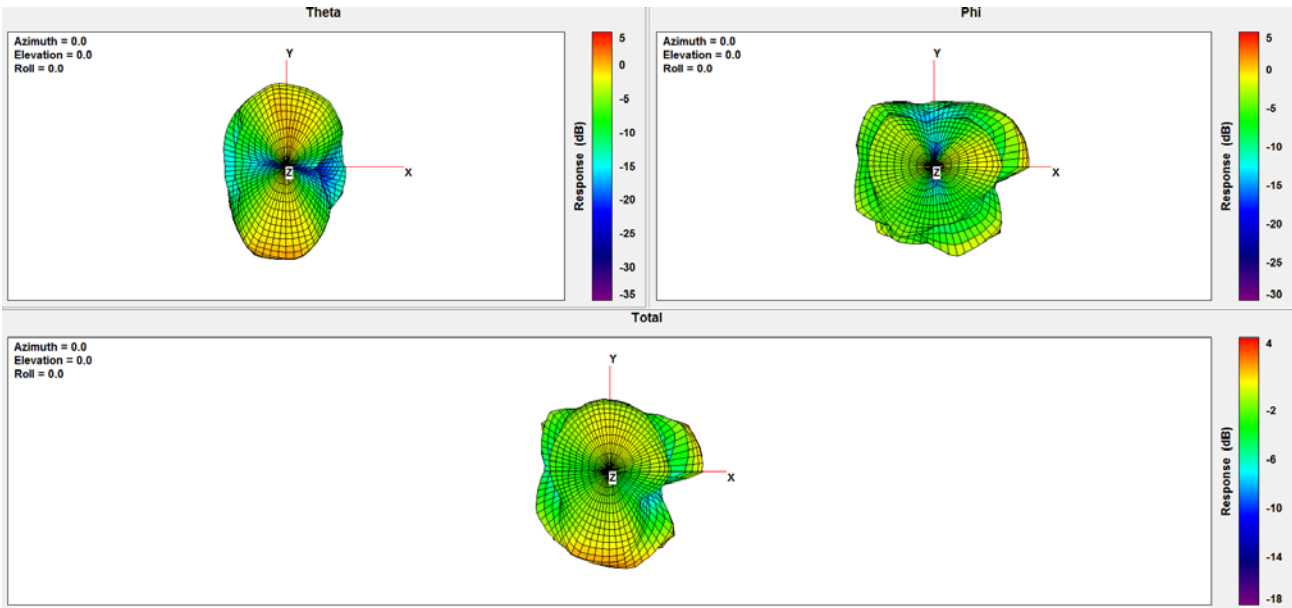
2000Mhz:



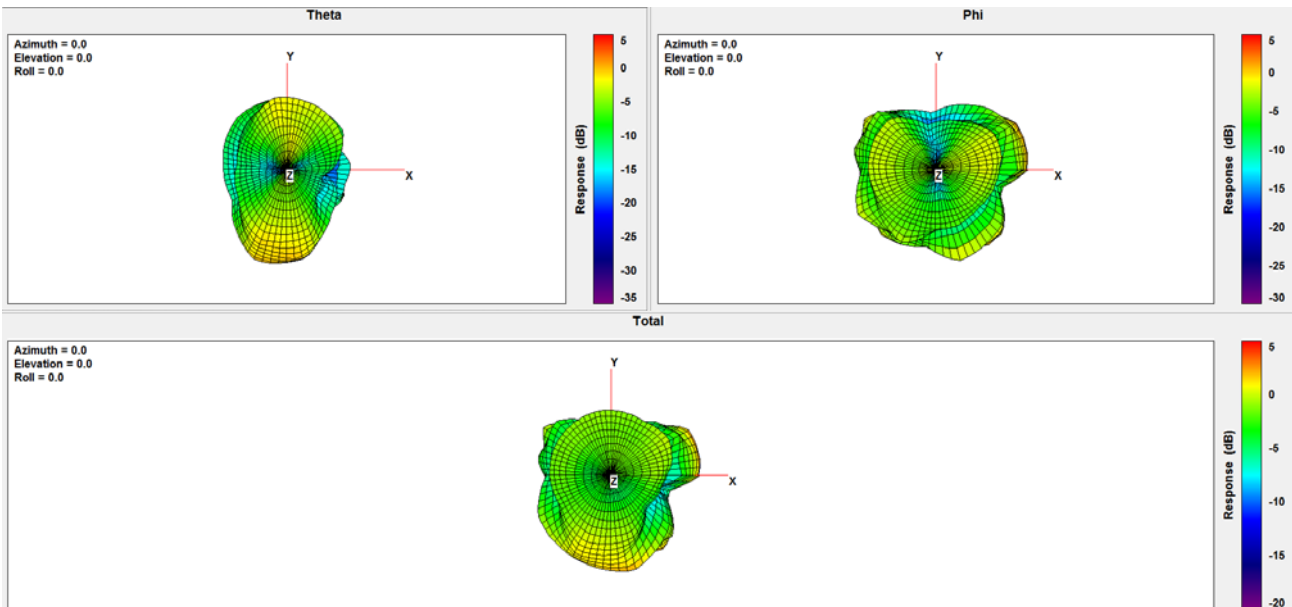
2100Mhz:



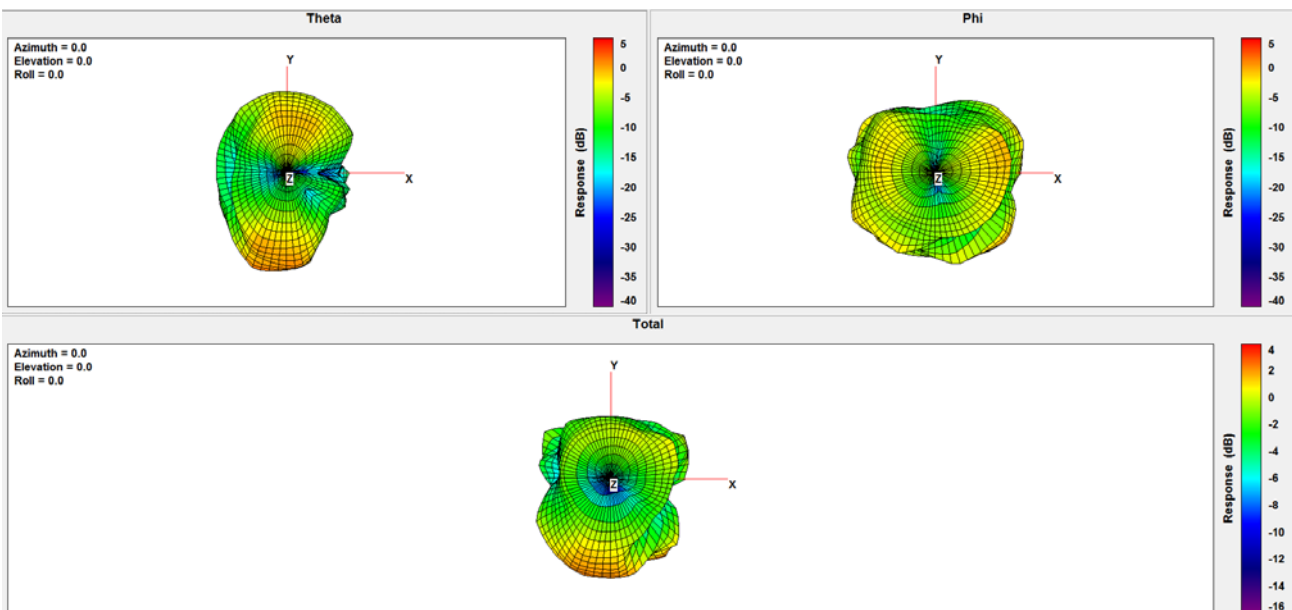
2200Mhz:



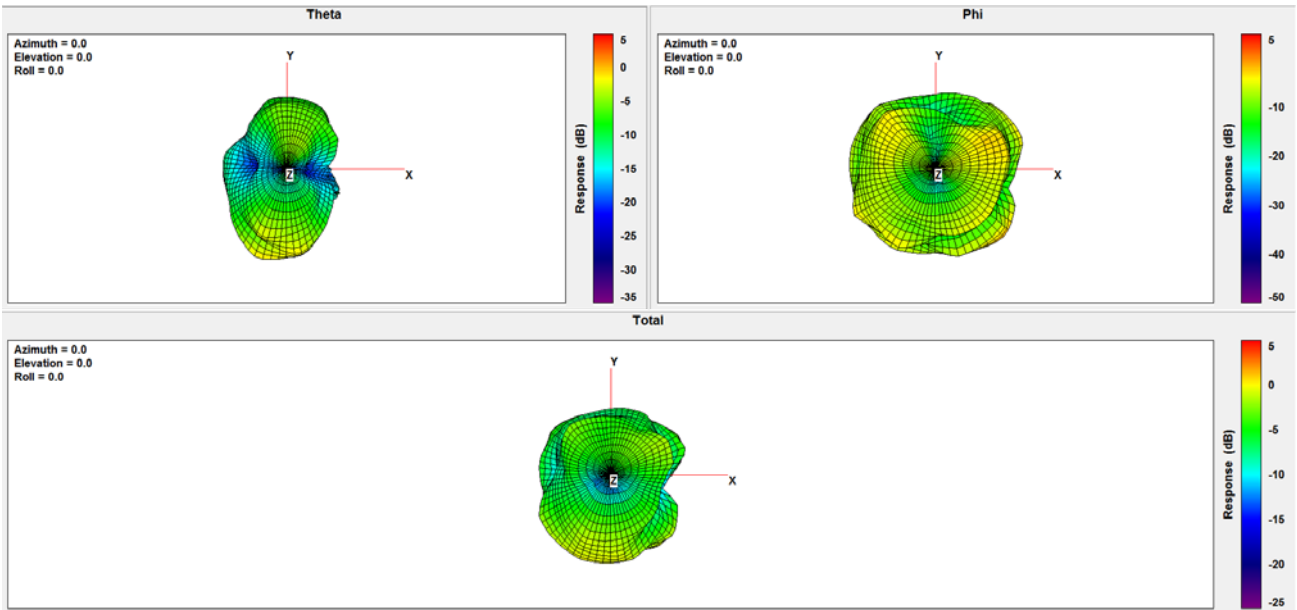
2300Mhz:



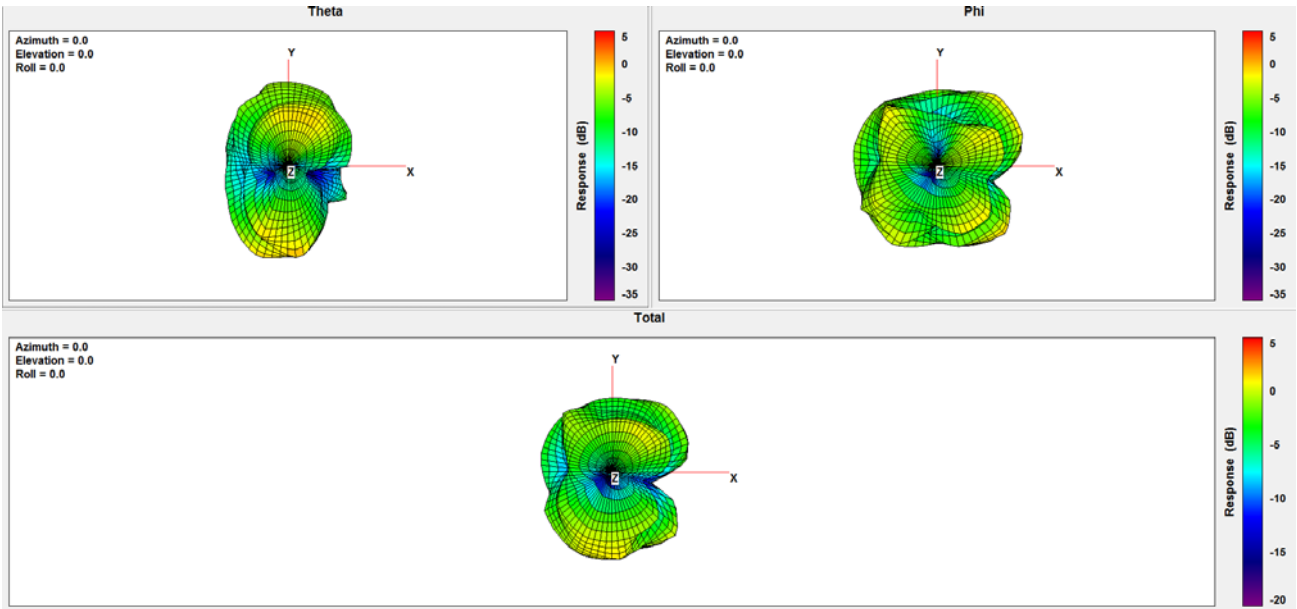
2400Mhz:



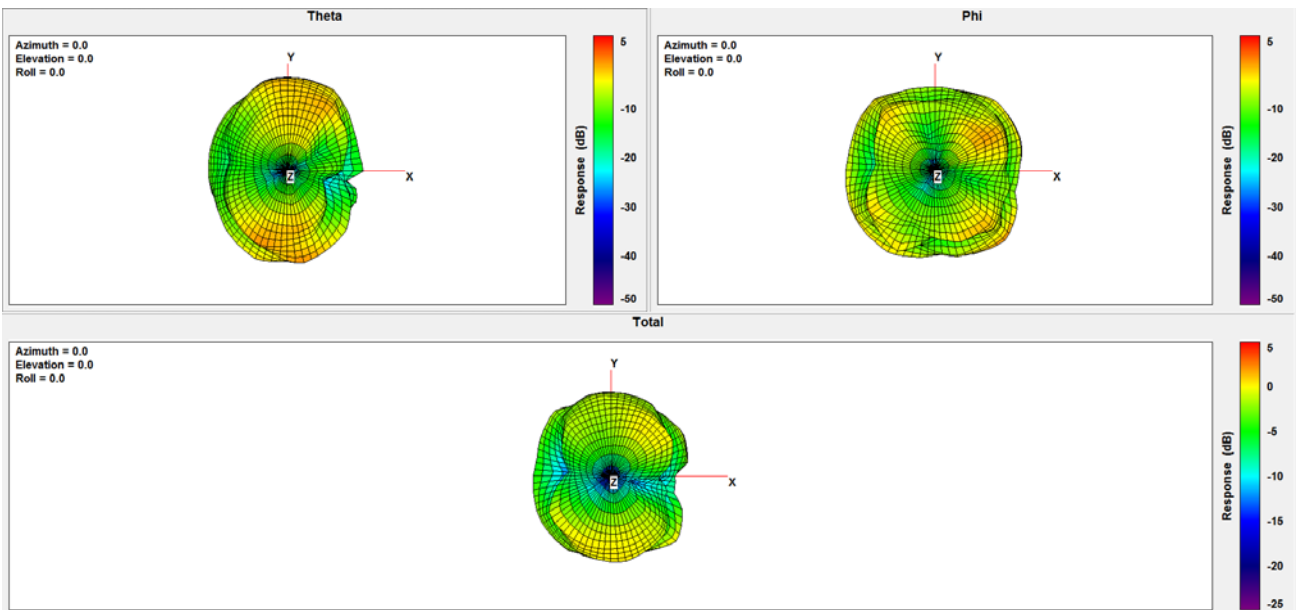
2500Mhz:



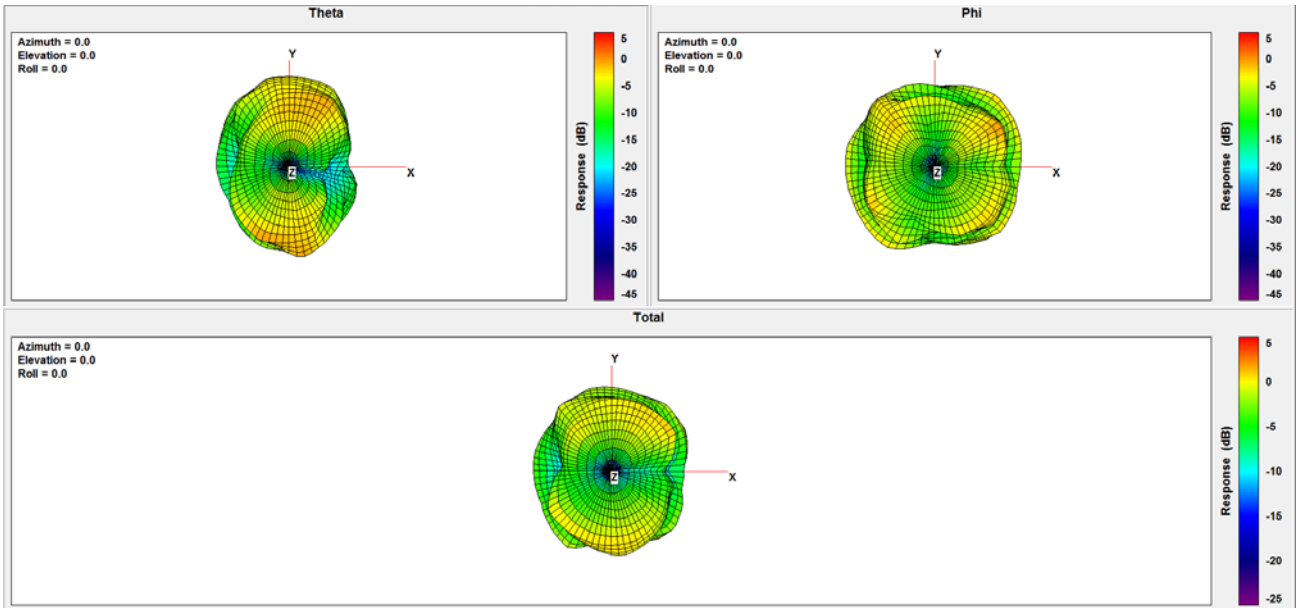
2600Mhz:



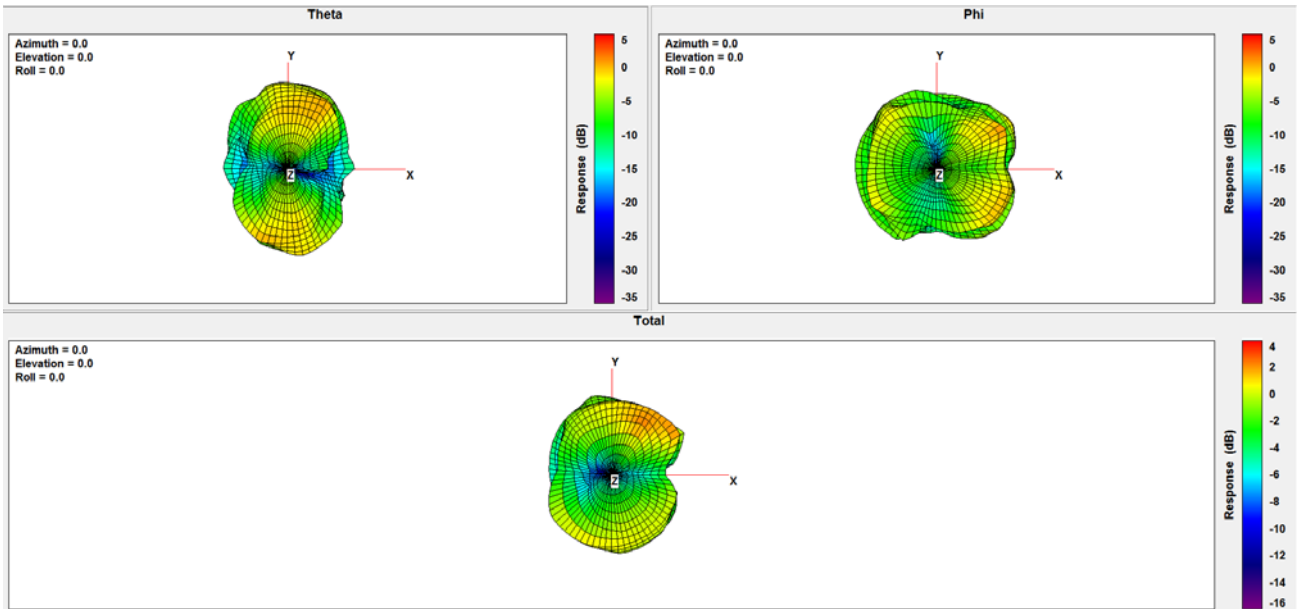
2700Mhz:



2800Mhz:



2900Mhz:



3000Mhz:

