

Outdoor Omni 2.25G Antenna

MODEL: TH-2250B

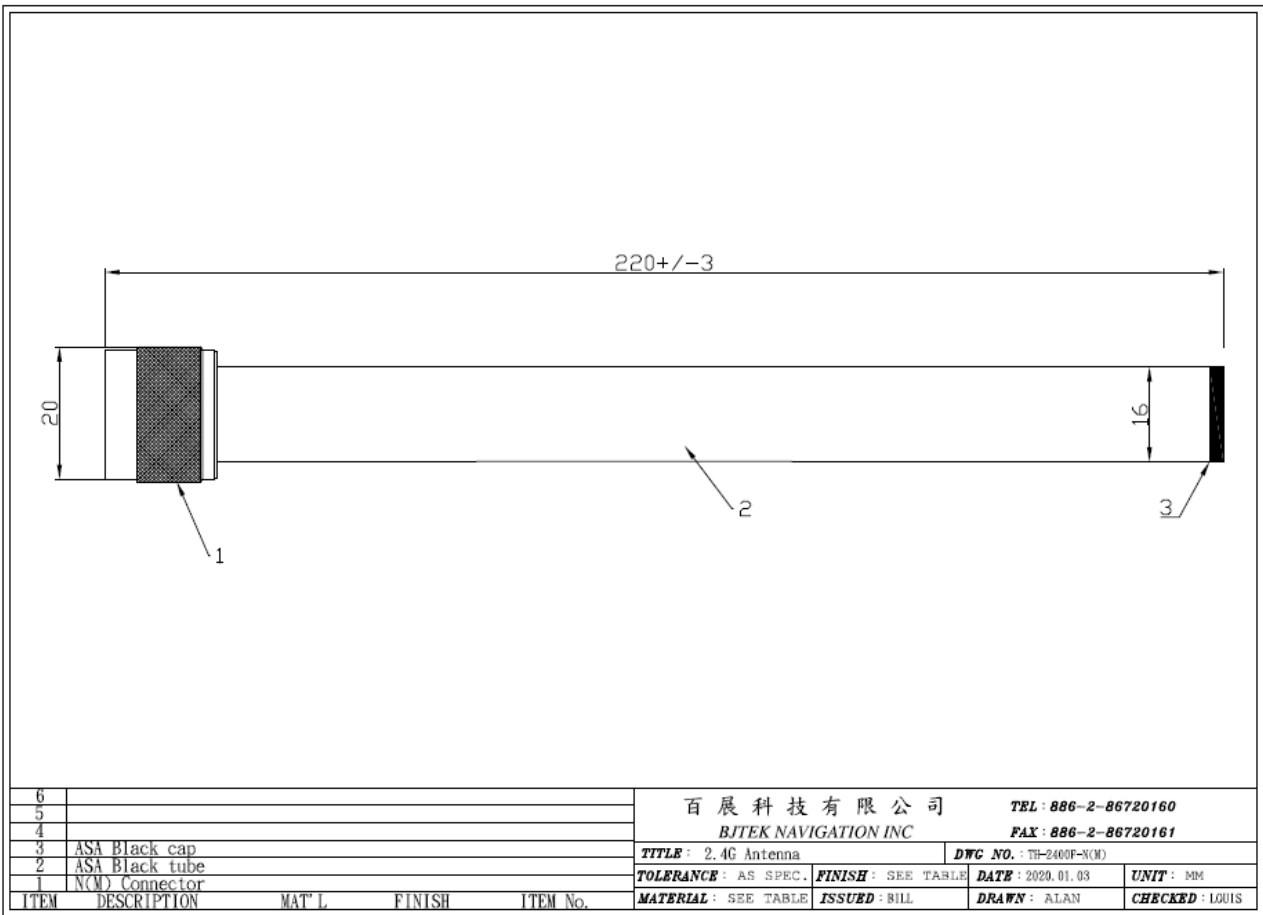


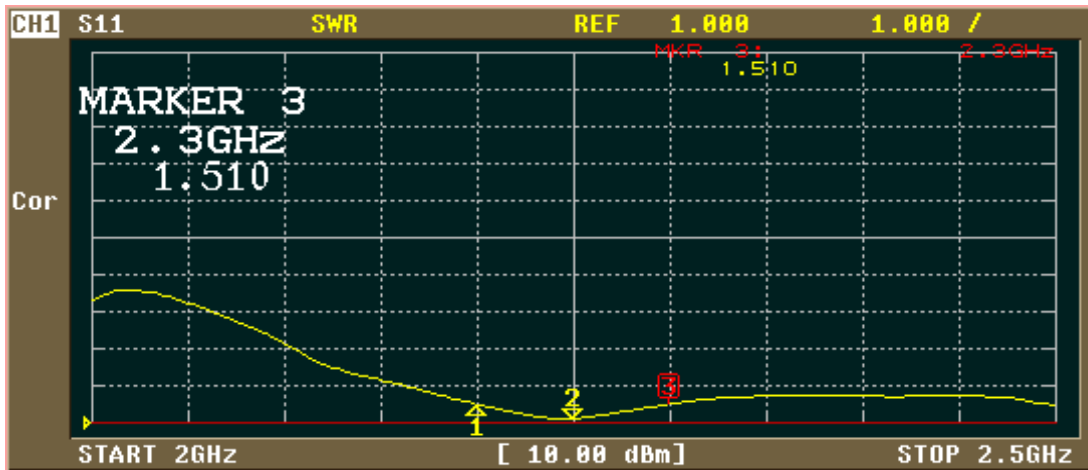
1. Electrical Properties

Parameter	Description
Frequency Band	2200-2300Mhz
Nominal Impedance	50 ohm
Polarization	Vertical
Electrical Wave	Dipole
Return Loss	Please See Data-1
V.S.W.R	2.0:1
Antenna Peak Gain	4.5dBi

2. Mechanical Properties

Parameter	Description
Antenna Type	External Antenna
Connector Type	N(M)
Antenna Dimensions	220 mm \pm 3
Antenna Color	ASA-UV-Black
Operating Temperature Range	-40°C~+80°C
Storage Temperature Range	-40°C~+80°C
Waterproof	IPX7





CH1 MARKER LIST

1:	2.200 000GHz	1.497
2:	2.250 000GHz	1.119
3:	2.300 000GHz	1.510
4:		
5:		
6:		
7:		
8:		
9:		
10:		

ACTIVATE MARKER

MARKER 1

MARKER 2

MARKER 3

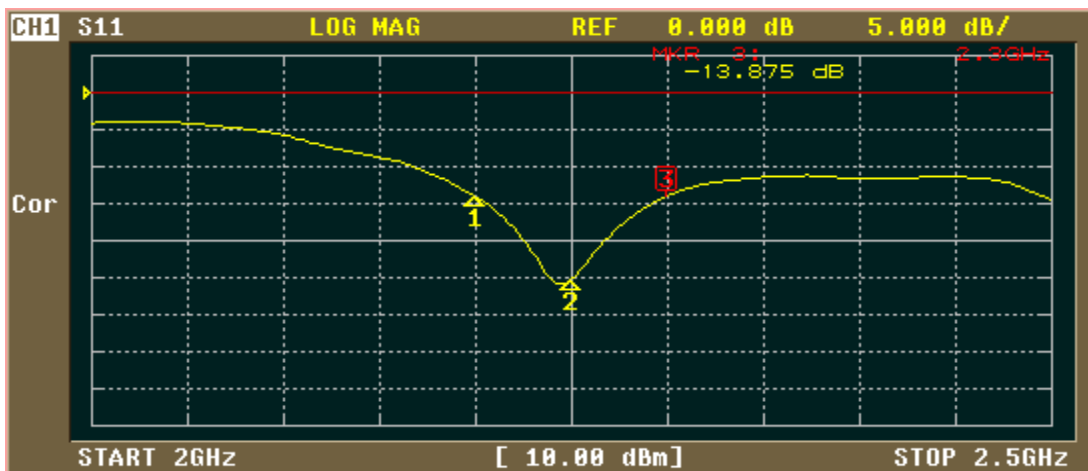
MARKER 4

MARKER 5

ACTIVATE MKR OFF

Return

More 1/2



CH1 MARKER LIST

1:	2.200 000GHz	-14.036 dB
2:	2.250 000GHz	-25.286 dB
3:	2.300 000GHz	-13.875 dB
4:		
5:		
6:		
7:		
8:		
9:		
10:		

FORMAT

LOG MAG

PHASE

DELAY

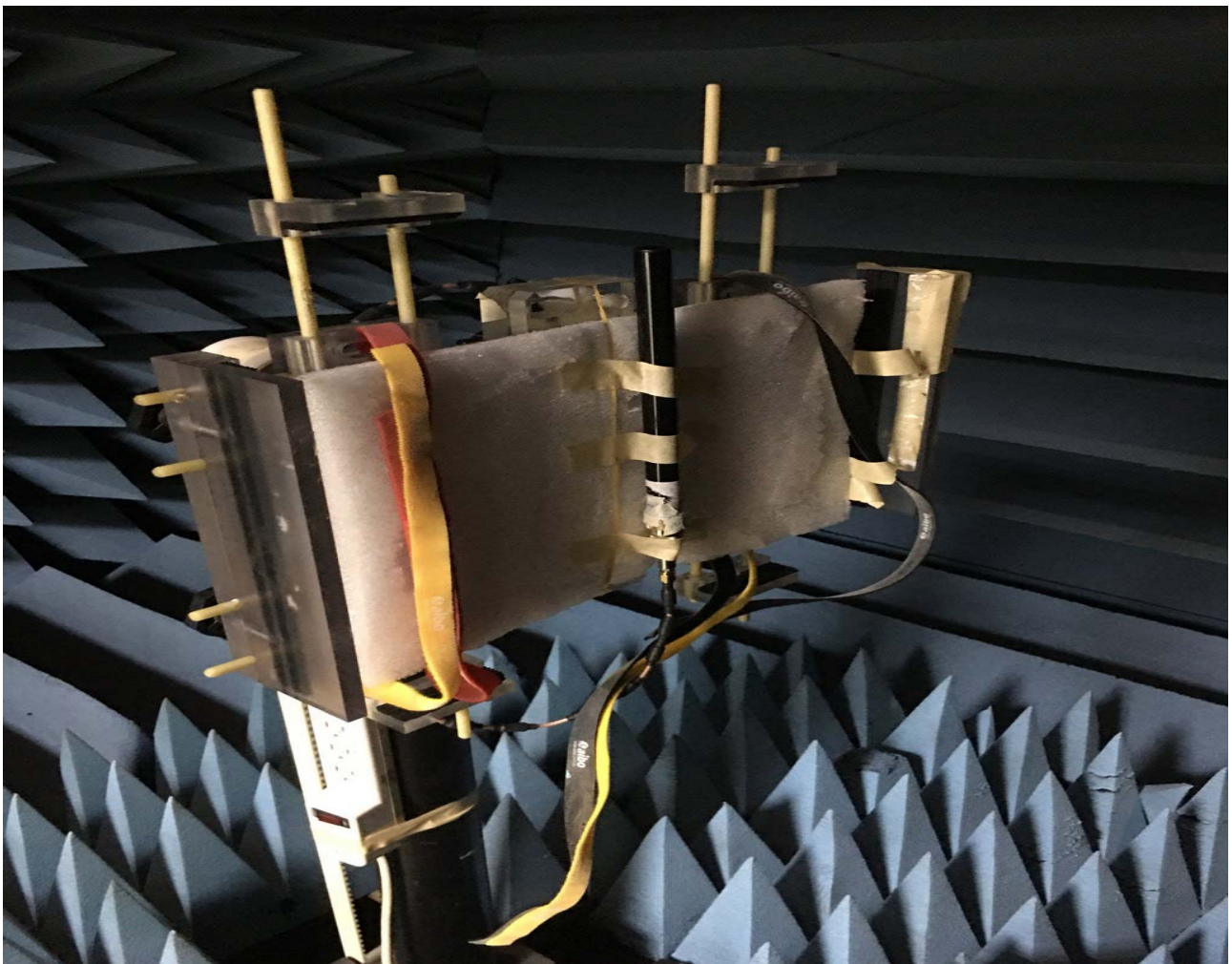
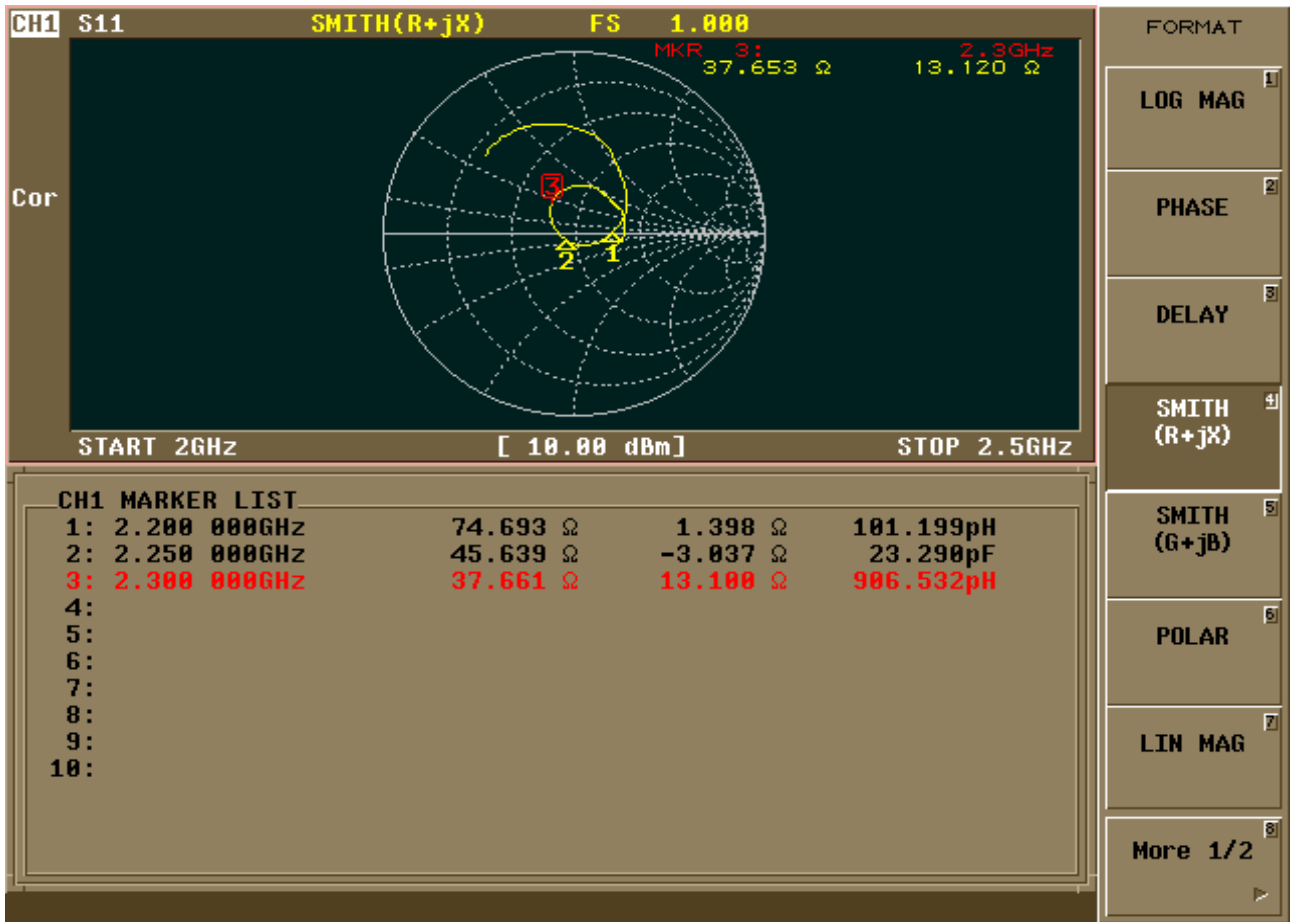
SMITH (R+jX)

SMITH (G+jB)

POLAR

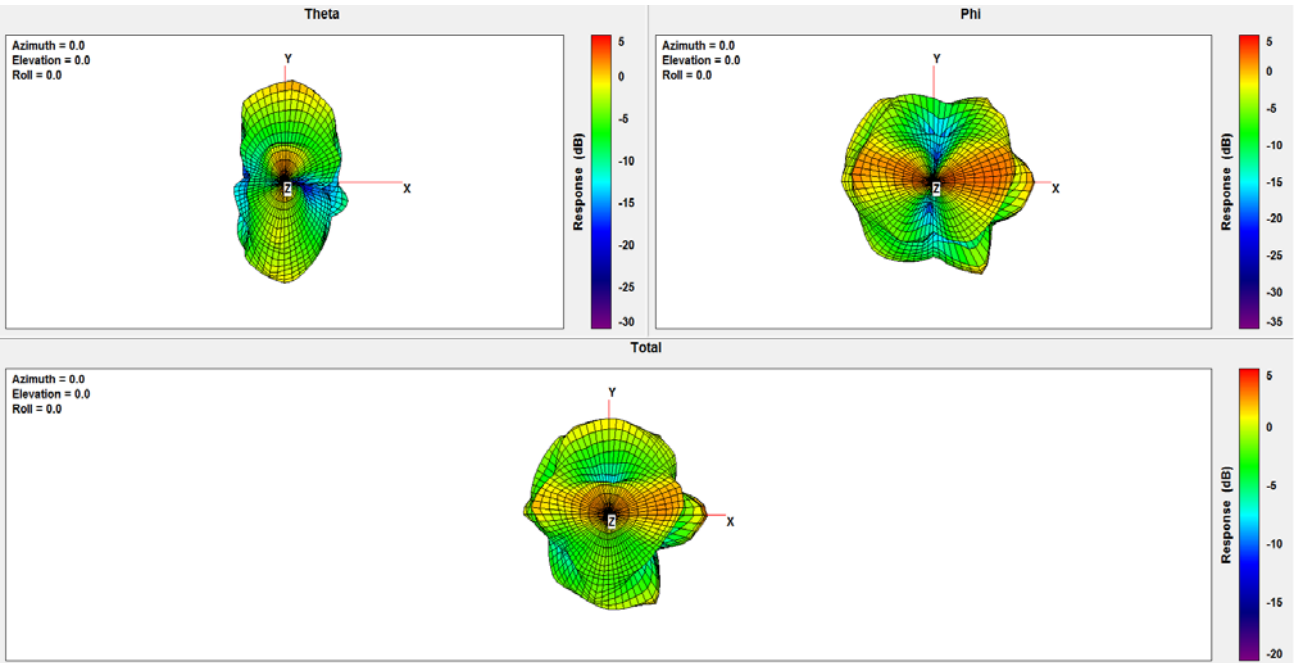
LIN MAG

More 1/2

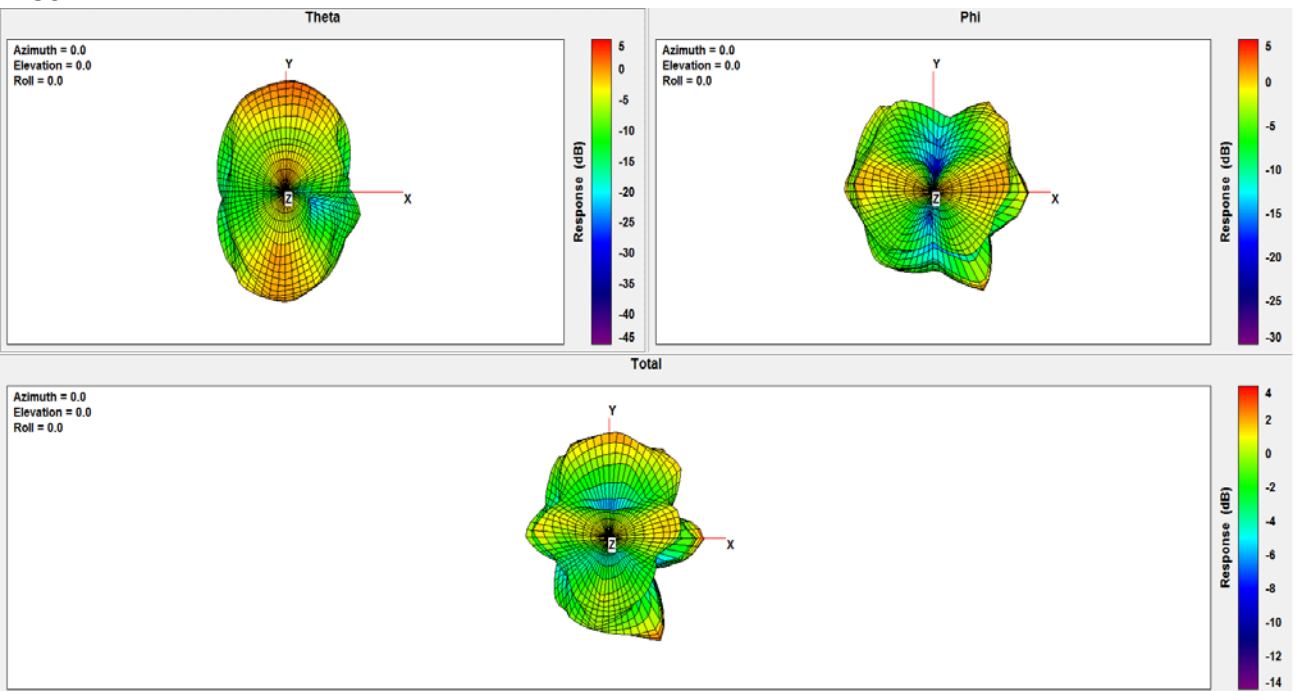


Frequency (MHz)	2200	2250	2300
Peak Gain (dBi)	4.97	3.77	4.55
Efficiency (%)	75.11	81.52	74.44

2200Mhz :



2250Mhz :



2300Mhz:

