

JPE LTE & GPS Passive Antenna

MODEL: TH-80-VE-PG2



1.. GENERAL DESCRIPTION

Model No	P/N
TH-80	TH80-SMA90M-VE-PG2

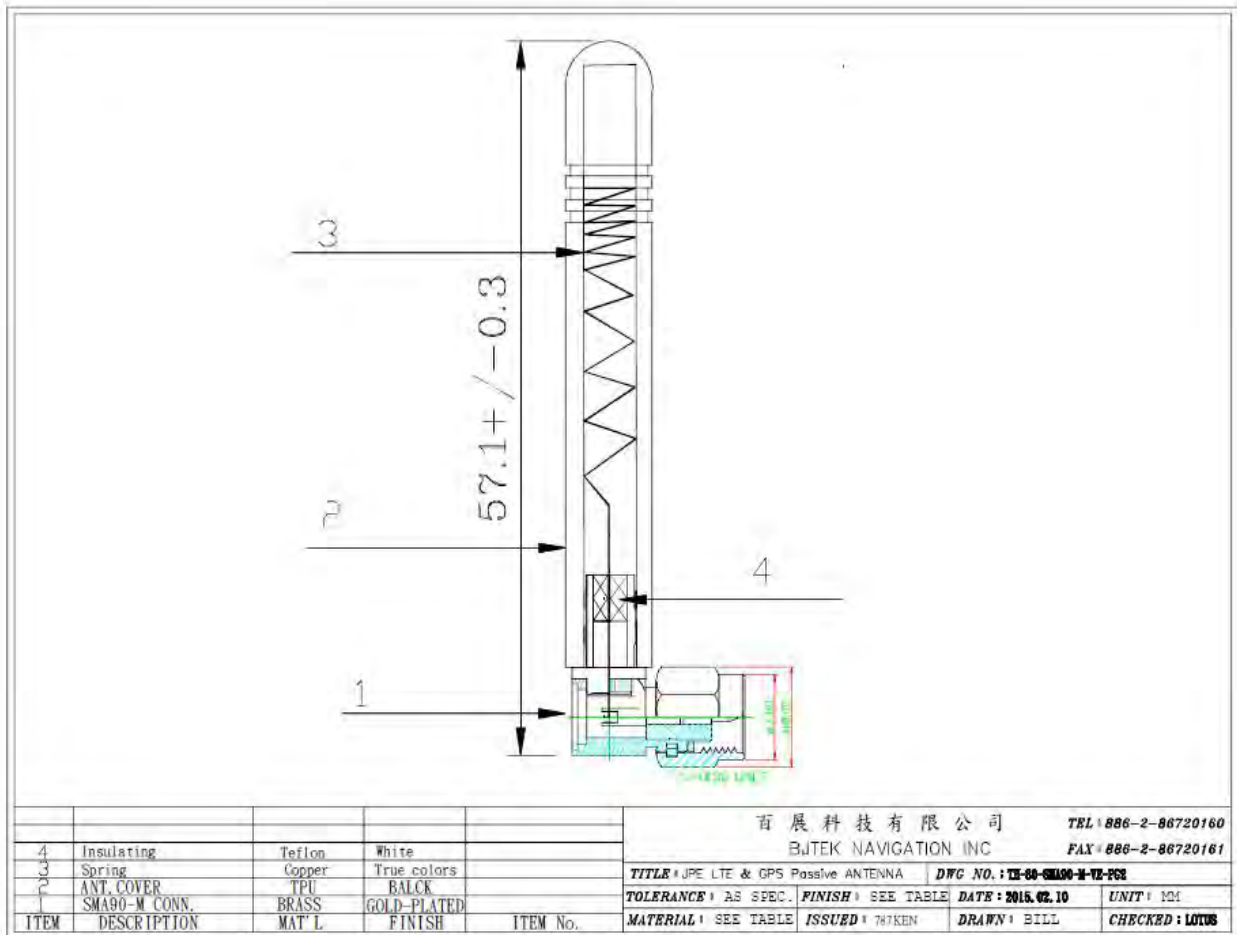
Below is a table summarizing the antenna design specification.

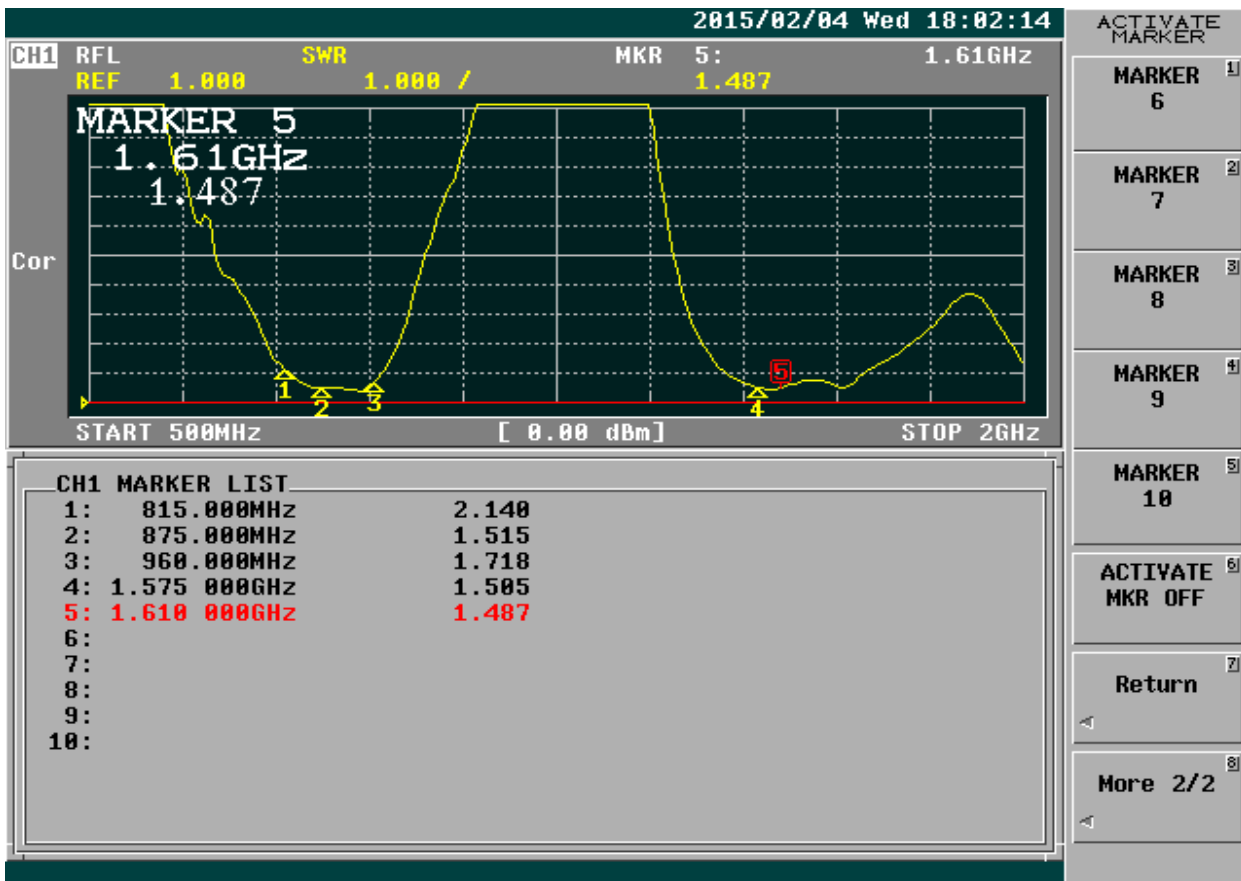
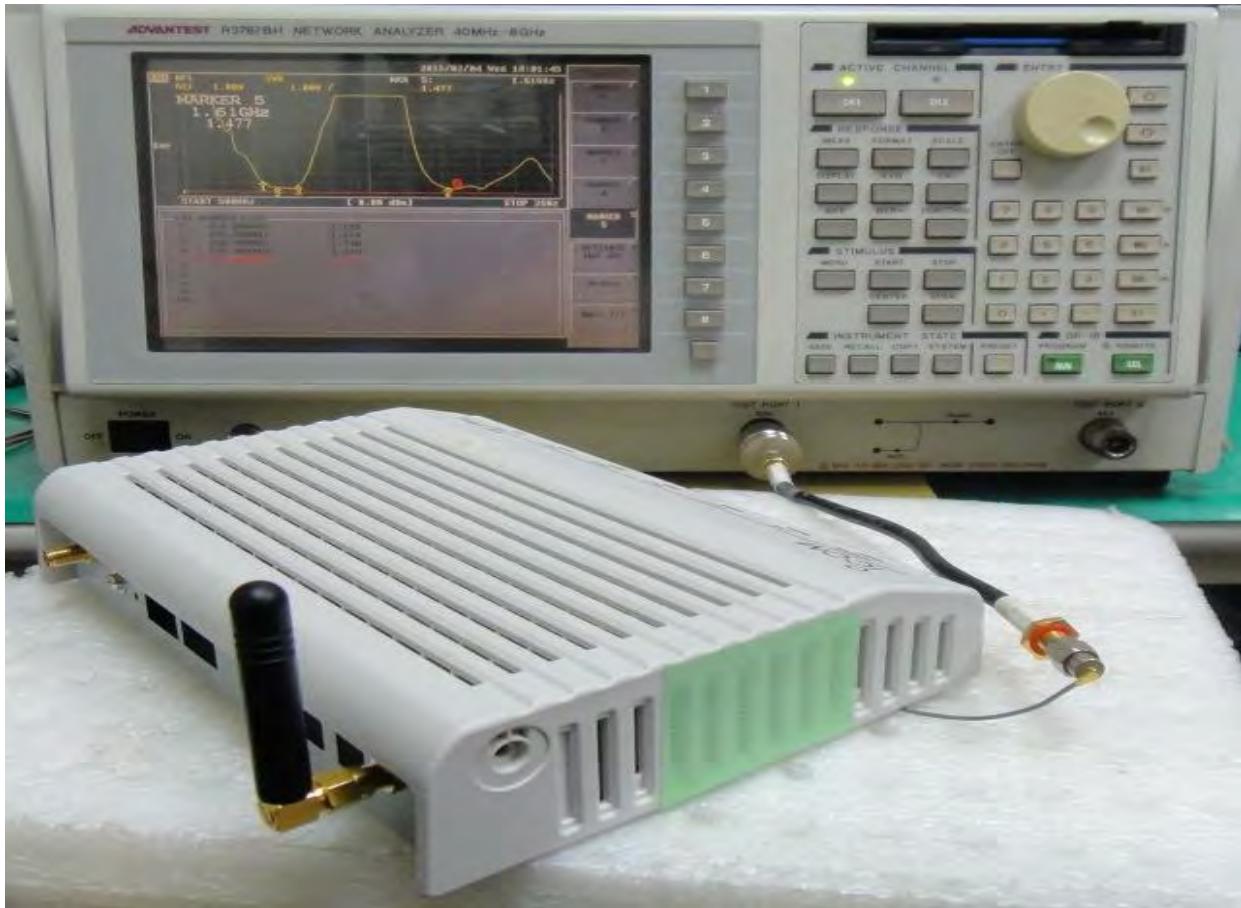
1.1 Electrical Properties

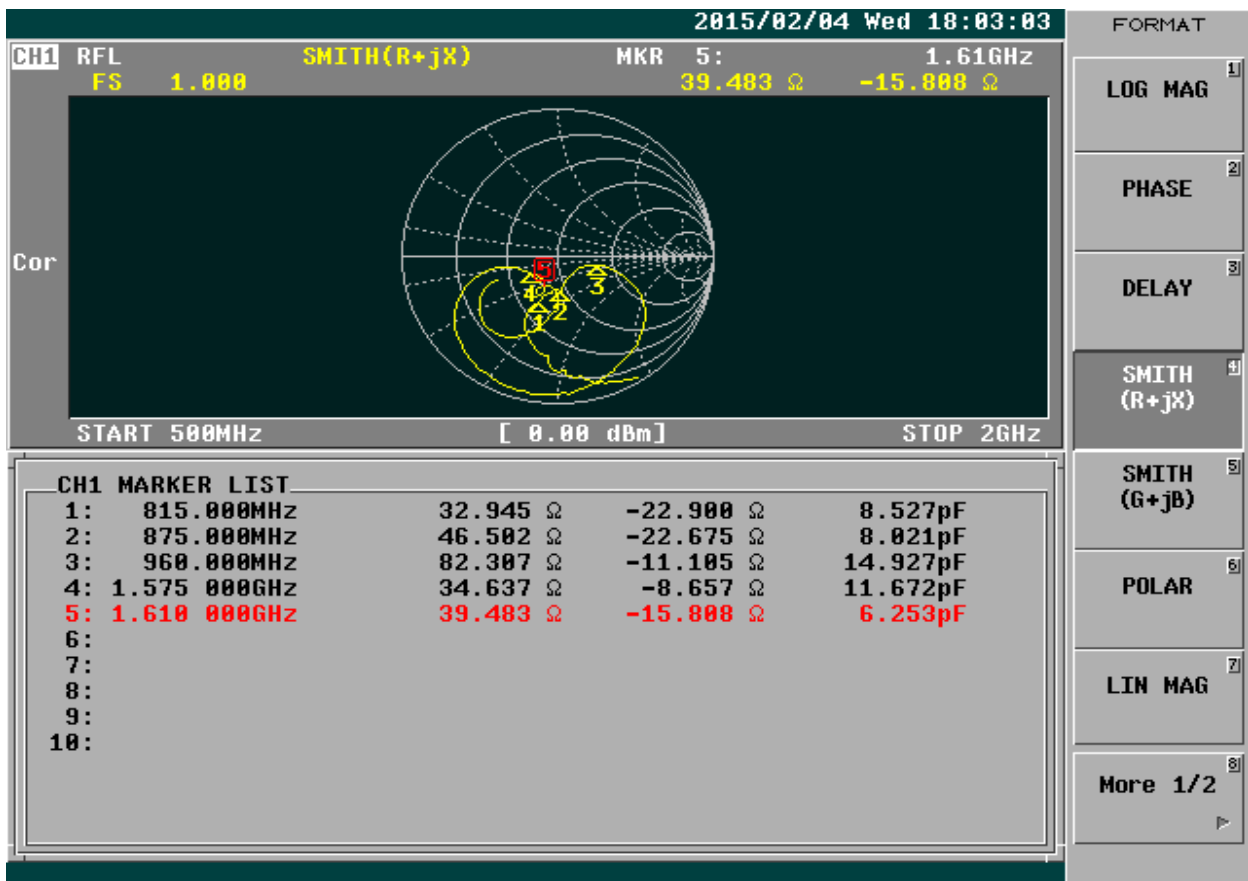
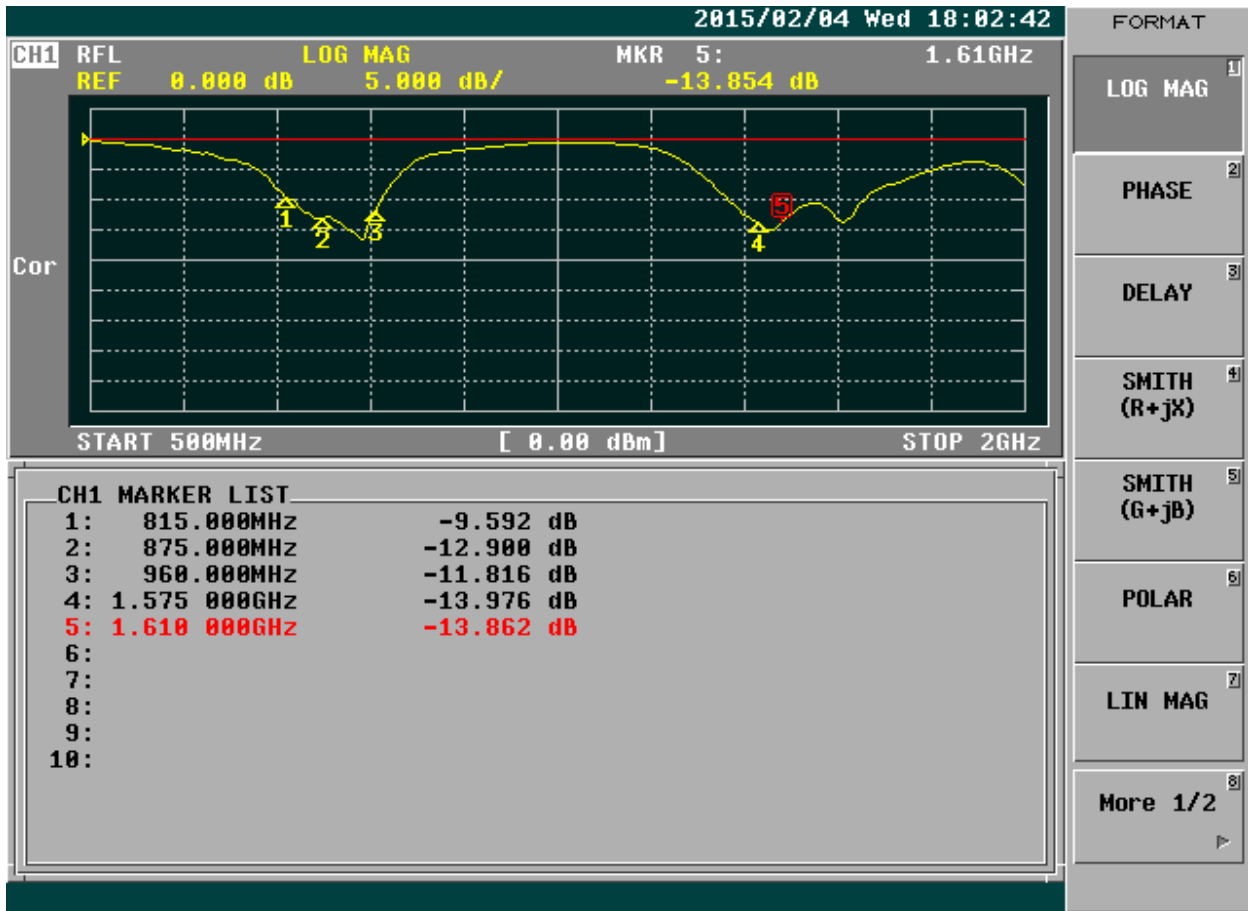
Parameter	Description
Frequency Band	815~870 & 1575 MHz
Nominal Impedance	50 ohm
Polarization	Vertical
Electrical Wave	1 /4 λ
Admitted Power radiation	1W
V.S.W.R	2.5:1 Max
Antenna Average Gain	0 dBi Type
Note: Gain includes the cable loss	

1.2 Mechanical Properties

Parameter	Description
Antenna Type	External Antenna
Material	TPU
Touch Type	Screw Type
Connector Type	SMA 90° (Male)
Antenna Dimensions	57.1mm±0.3
Antenna Color	Black
Operating Temperature Range	-30°C~+70°C
Storage Temperature Range	-35°C~+80°C







Test result:

Frequency (MHz)	815	830	860	875	1575
Average Gain (dB)	-2.13	-1.99	-1.85	-2.06	-1.53
Peak Gain (dBi)	0.88	0.99	1.06	0.85	3.16
Efficiency (%)	61.12	63.22	65.19	62.19	70.20

2D Radiation Patterns :

