

JPE LTE & GPS Passive Antenna

MODEL: TH-97B-VE-PG2



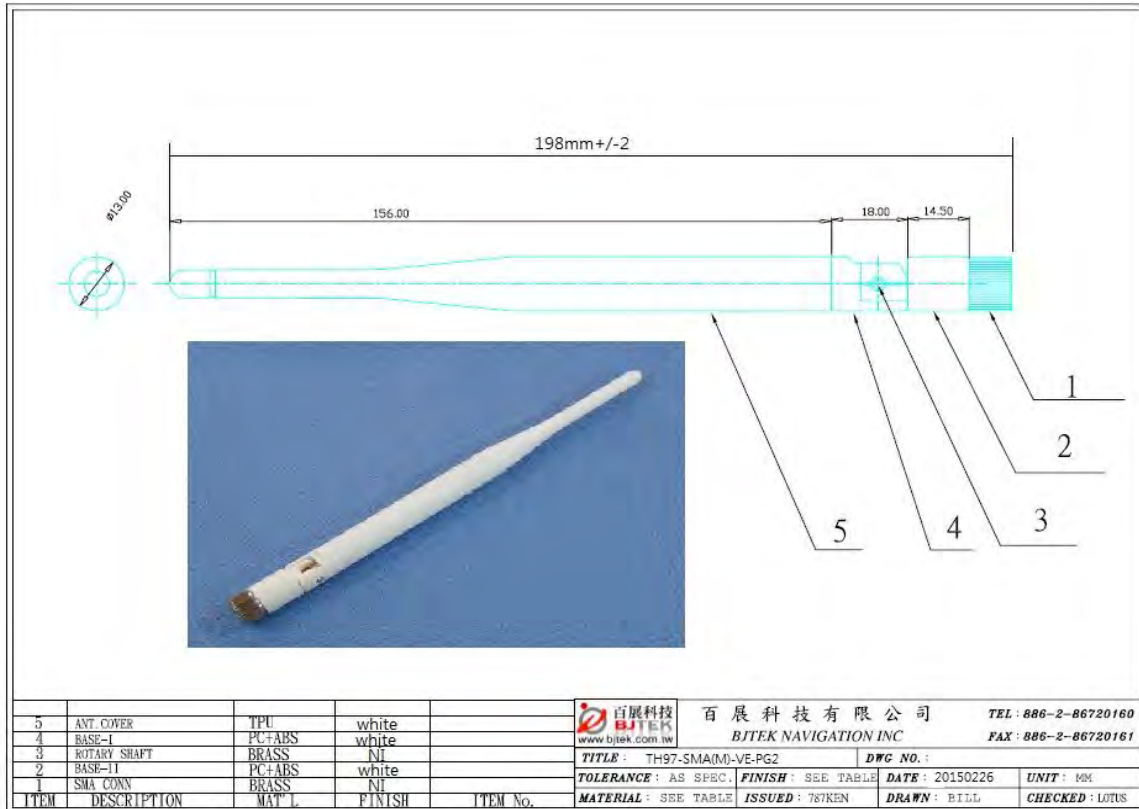
1.1 Electrical Properties

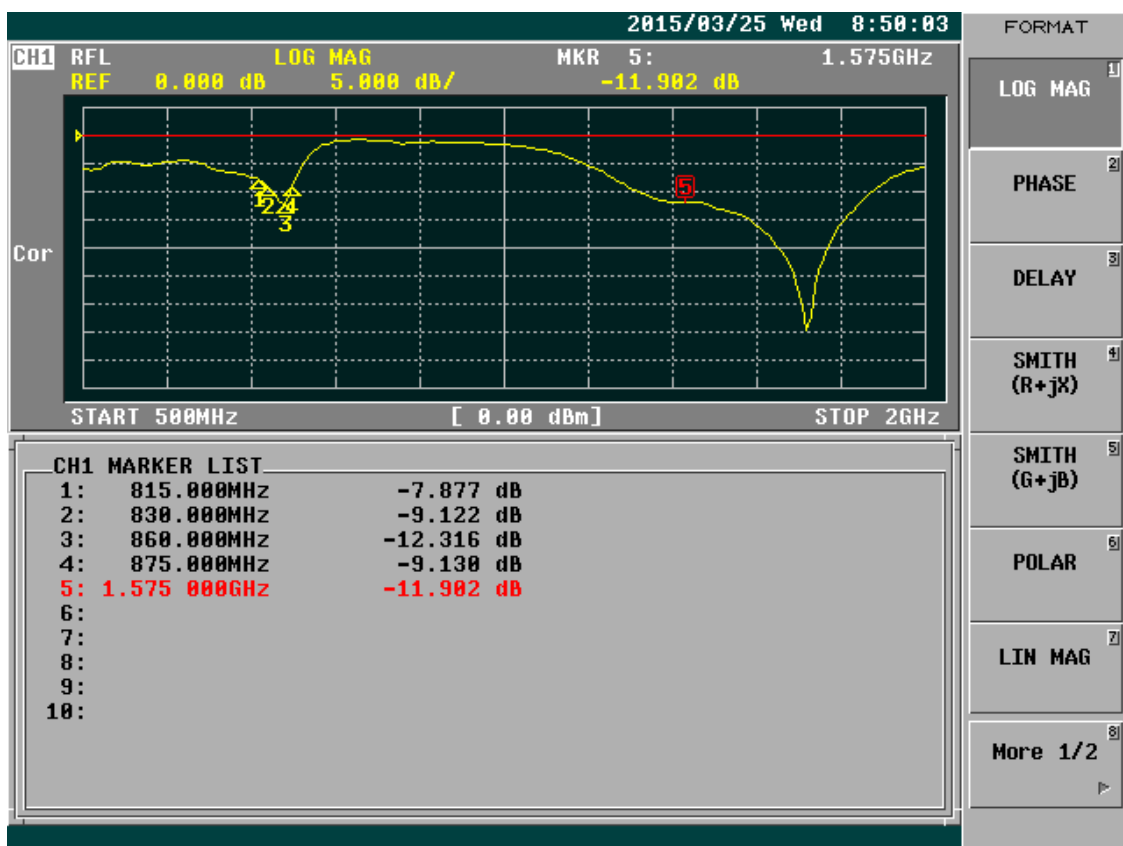
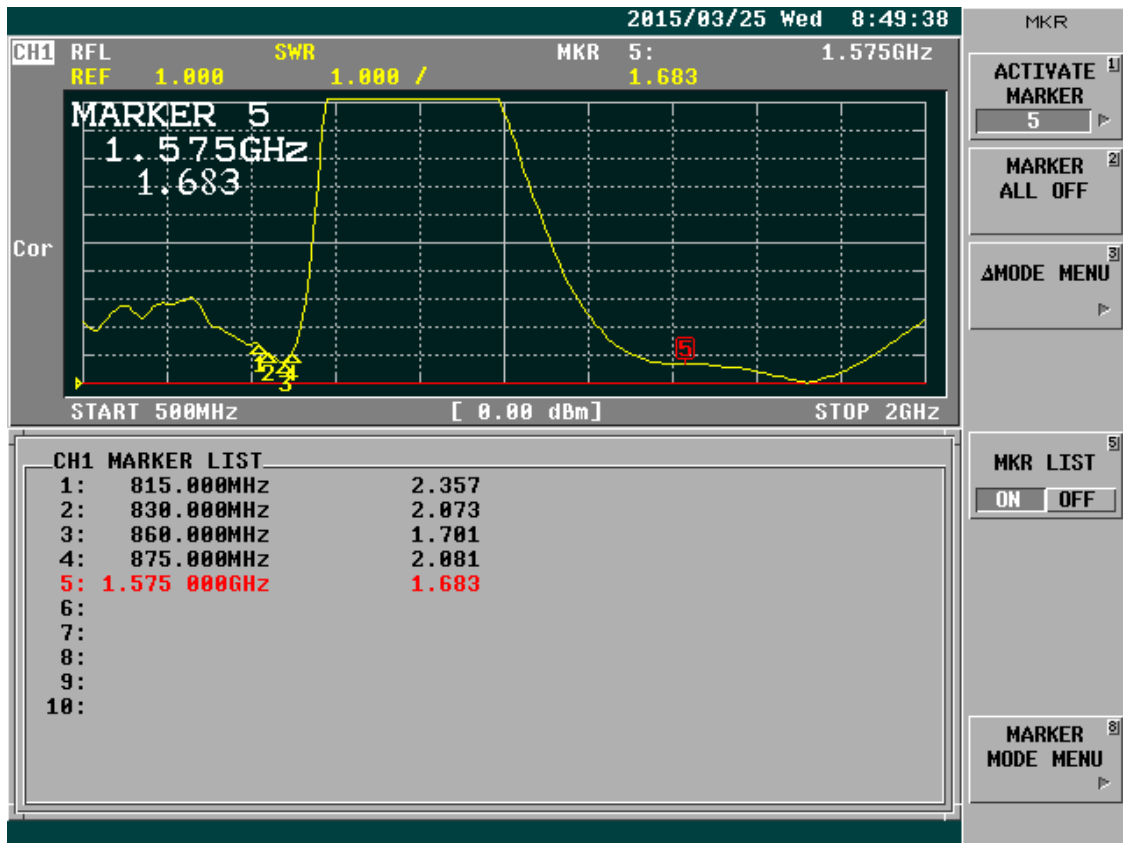
Parameter	Description
Frequency Band	815~875MHz & 1575Mhz
Nominal Impedance	50 ohm
Polarization	Vertical
Electrical Wave	Dipole
Return Loss	Please See Data-1
V.S.W.R	3.0:1 Max
Antenna Gain	1.5dBi Max
Note: Gain includes the cable loss	

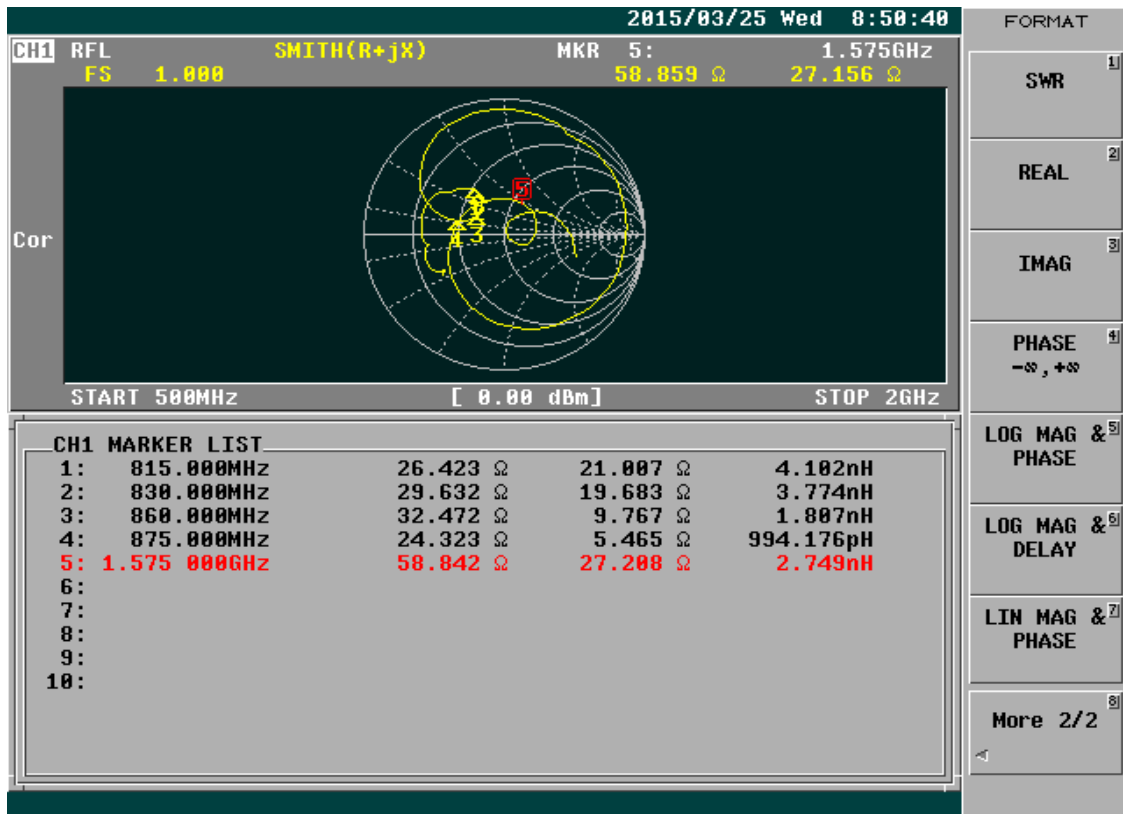
1.2 Mechanical Properties

Parameter	Description
Antenna Type	External Antenna
Antenna Cover	TPE
Touch Type	Screw Type
Connector Type	SMA 180°(Male)
Antenna Dimensions	198mm±2
Antenna Color	White
Operating Temperature Range	-20°C~+60°C
Storage Temperature Range	-30°C~+70°C

* This specification is subject to change without prior notice







Test result:

Frequency (MHz)	815	830	860	875	1575
Average Gain (dB)	-2.19	-2.05	-2.37	-3.14	-1.57
Peak Gain (dBi)	1.51	1.64	1.07	0.26	1.43
Efficiency (%)	60.27	62.24	57.86	48.44	69.55

2D Radiation Patterns :

