

# Five Band GSM with WIFI Antenna

## MODEL: GAF-5-GSM/WIFI

This document provides a five-band GSM + Wireless Antenna design;



### 1. GENERAL DESCRIPTION

Model No	P/N
	GAF-5-GSM/WIFI

Below is a table summarizing the antenna design specification.

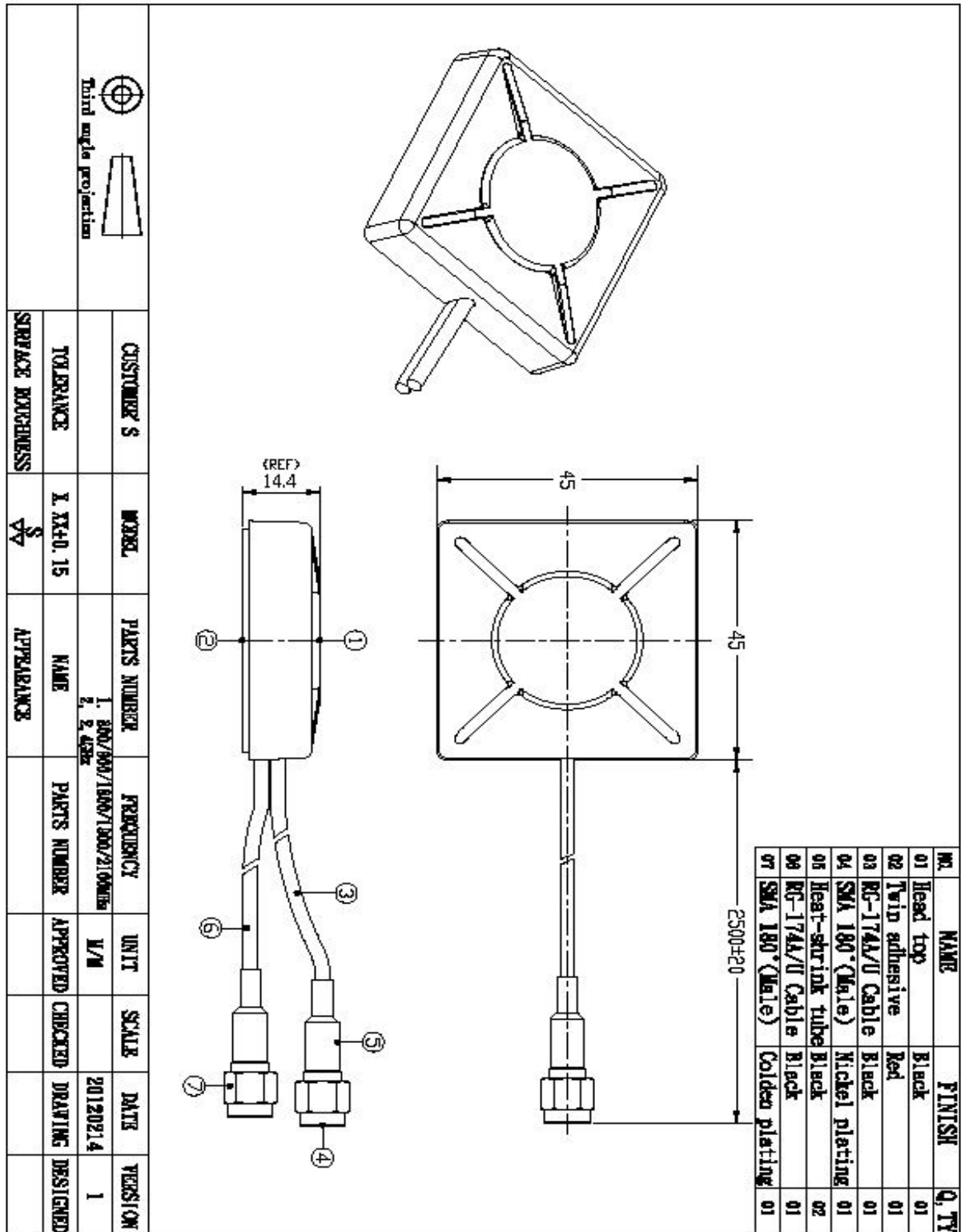
#### 1.1 Electrical Properties

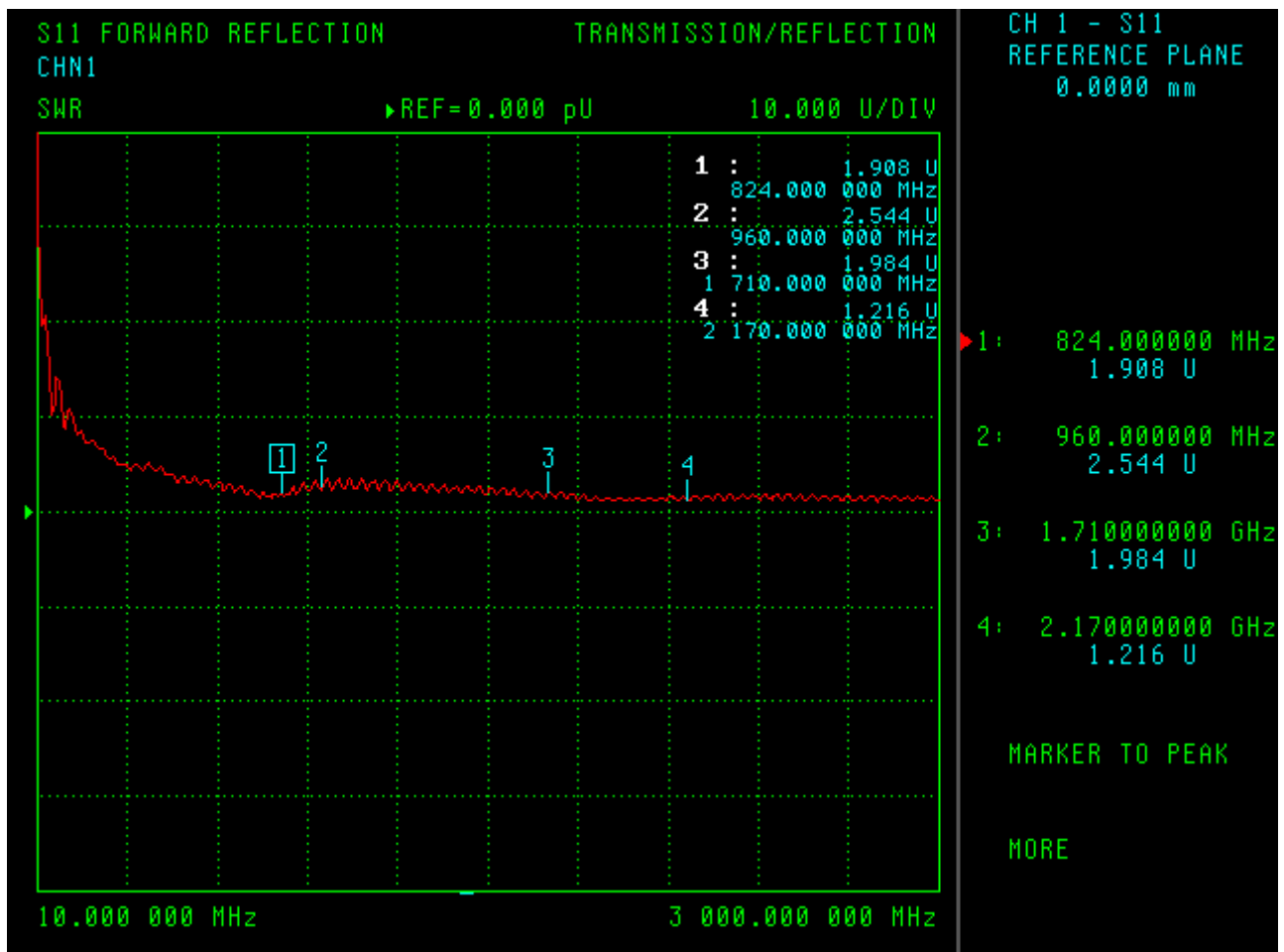
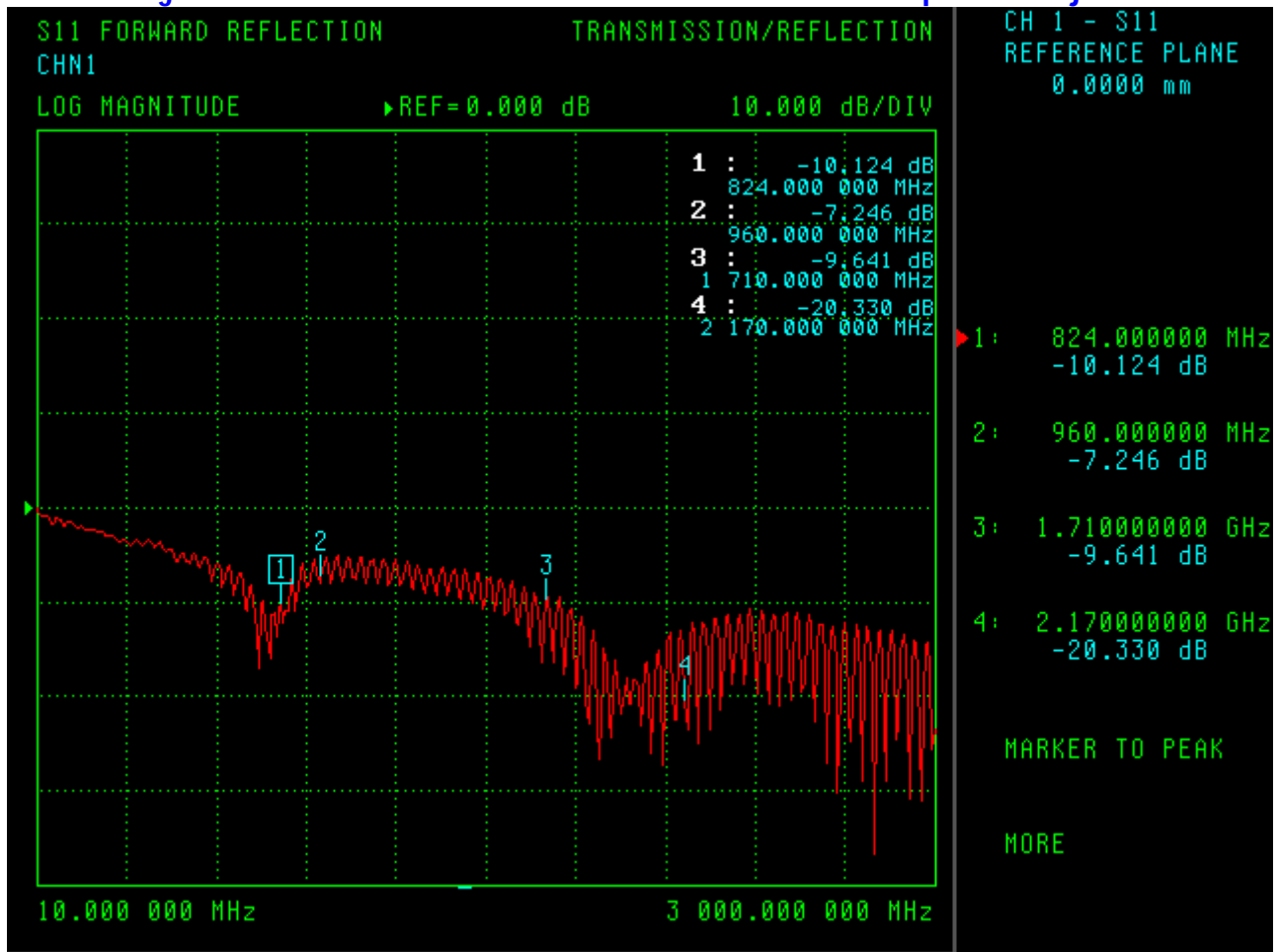
Parameter	Description	
Frequency Band	824~960/1710~2170MHz	2.4~2.5Ghz
Nominal Impedance	50 ohm	
Polarization	Vertical	
Electrical Wave	Dipole	
V.S.W.R	2.0:1	
Antenna Average Gain	0~5.0dBi	1.5db
Note: Gain includes the cable loss		

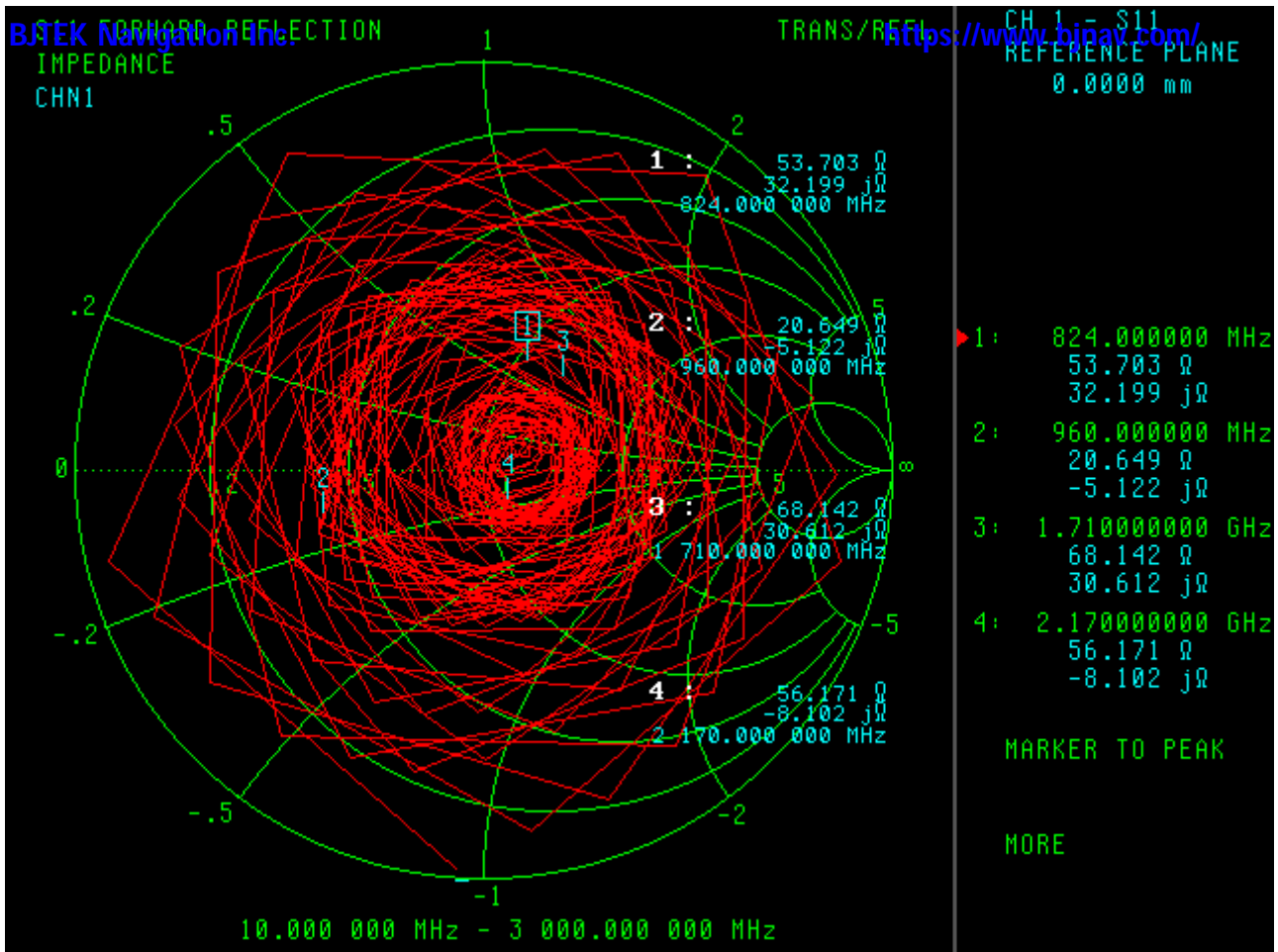
#### 1.2 Mechanical Properties

Parameter	Description
Antenna Material	ABS
Connector Type	SMA 180° male

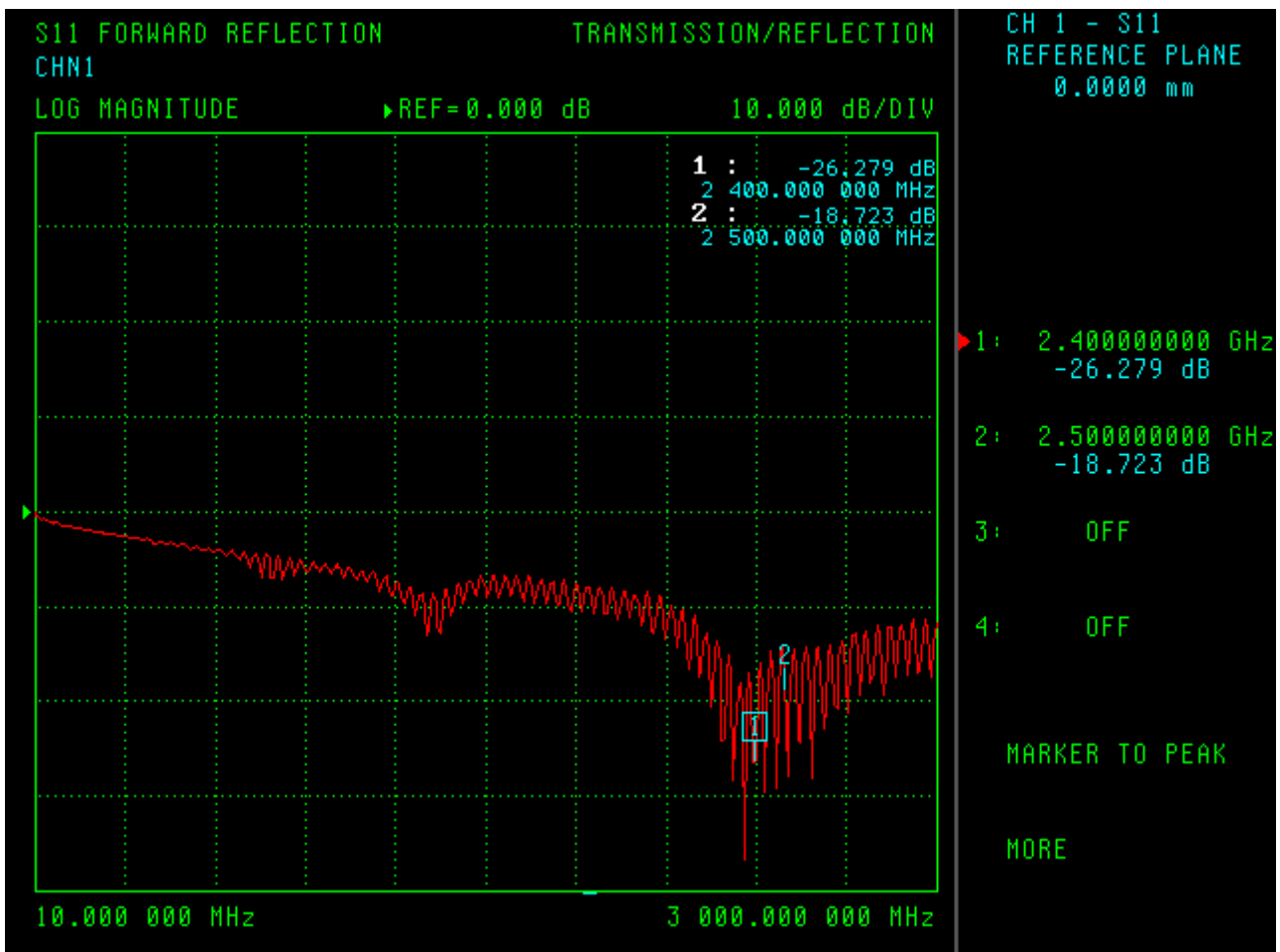
<b>BJTEK Navigation Inc.</b> Antenna Dimensions	45 x 45 mm	<a href="https://www.bjnav.com/">https://www.bjnav.com/</a>
Antenna Cable Total Length	2500mm ± 20 x 2	
Antenna Color	Black	
Operating Temperature Range	-20°C~+60°C	
Storage Temperature Range	-30°C~+70°C	

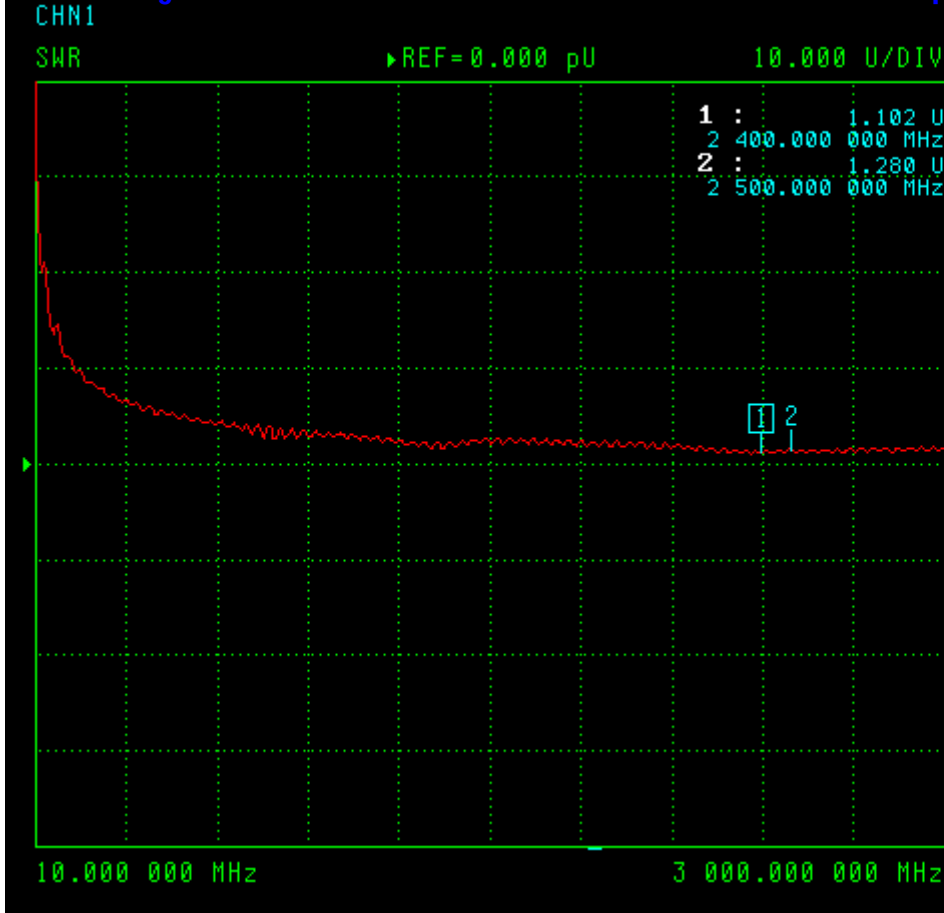






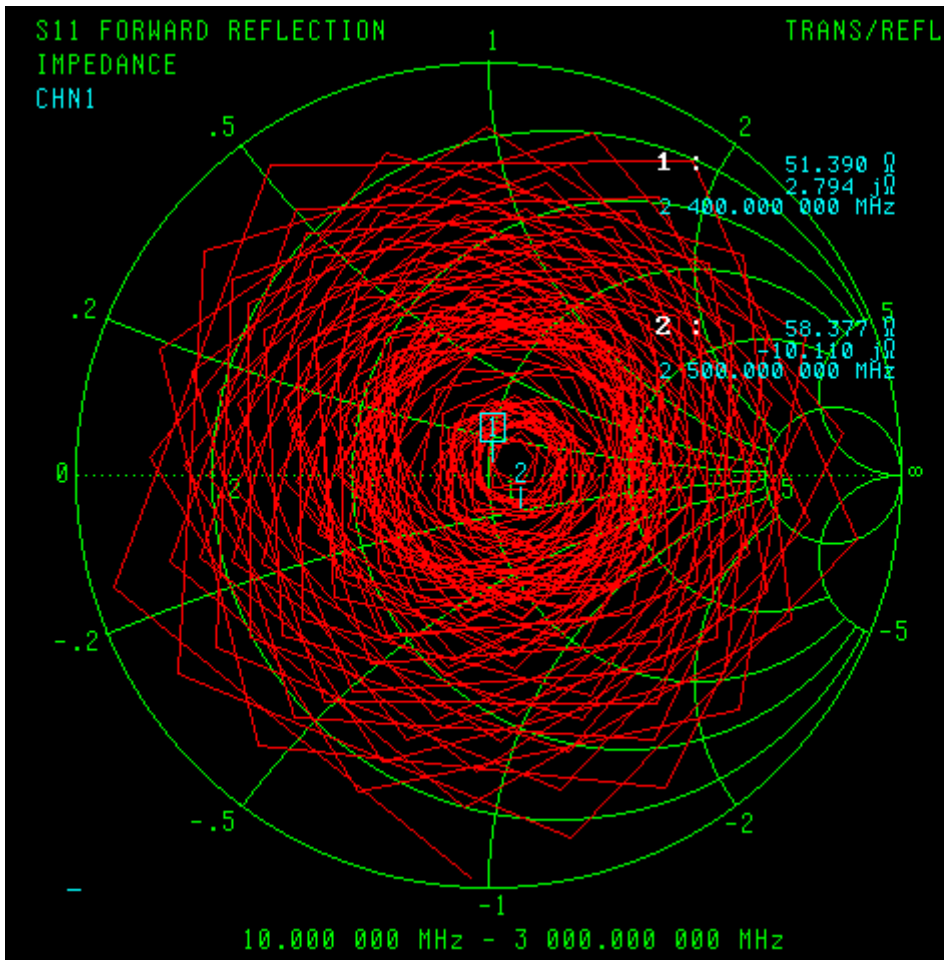
WIFI :





CH 1 - S11  
REFERENCE PLANE  
0.0000 mm

- 1: 2.400000000 GHz  
1.102 U
  - 2: 2.500000000 GHz  
1.280 U
  - 3: OFF
  - 4: OFF
- MARKER TO PEAK
- MORE



CH 1 - S11  
REFERENCE PLANE  
0.0000 mm

- 1: 2.400000000 GHz  
51.390 Ω  
2.794 jΩ
  - 2: 2.500000000 GHz  
58.377 Ω  
-10.110 jΩ
  - 3: OFF
  - 4: OFF
- MARKER TO PEAK
- MORE

