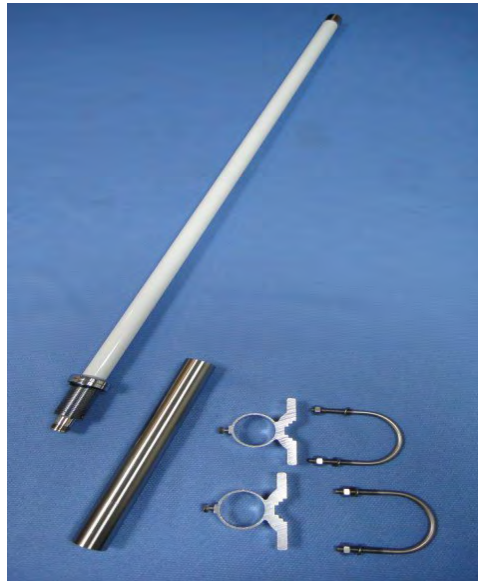


OUTSIDE GSM ANTENNA

MODEL: GSM-100B

Fiber Glass Antenna 850/900/1800/1900/2170Mhz



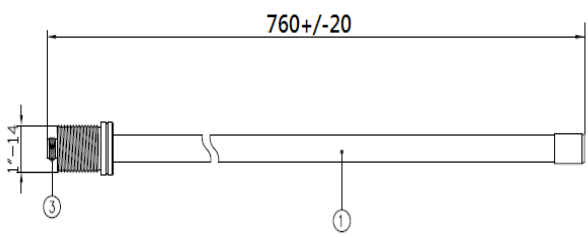
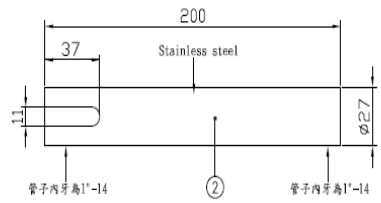
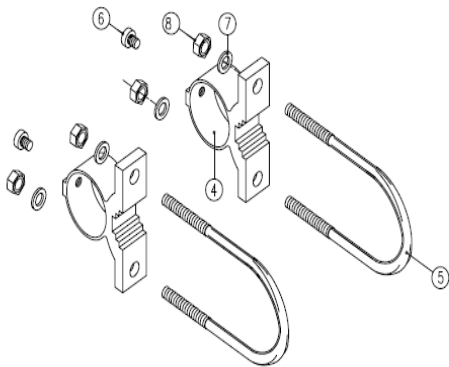
Specifications:

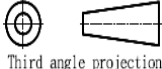
Frequency range:	850/900/1800/1900/2170Mhz
Gain:	7~9dBi
V.S.W.R:	<2.0
Impedence:	50 ohm
Connector:	N Type Female
Dimension:	760mm +/-10 x OD20mm
Weight:	620g
Polarization :	vertical
Power handling :	50W
Colour :	white
Rated wind velocity :	60m/s
Working Temperature :	-40~80°C
Lightning Protection :	Direct Ground
Touch Type :	1"-14 threaded (M) 200mm SUS TUBE 1"-14 threaded (F) X2 & SUS U-Circlip x 2

* This specification is subject to change without prior notice



NO.	NAME	Q, TY
01	Body	01
02	Copper tube(Stainless steel)	01
03	N (Female)	01
04	Clip retaining	02
05	U-Circlip	02
06	Hexagonal nut	02
07	Round iron washer	04
08	Hexagonal nut	04



 Third angle projection	CUSTOMER'S	MODEL	PARTS NUMBER	FREQUENCY	UNIT	SCALE	DATE	VERSION
					800/1900/2100MHz	M/M		20120704
	TOLERANCE	X. XX±0.15	NAME	PARTS NUMBER	APPROVED	CHECKED	DRAWING	DESIGNED
	SURFACE ROUGHNESS	\sqrt{S}	APPEARANCE					

