

# Drills a hole fixed GSM Antenna

## Model : GSM-60



### 1. GENERAL DESCRIPTION

Model No
GSM60-3M-SMA(M)

Below is a table summarizing the antenna design specification.

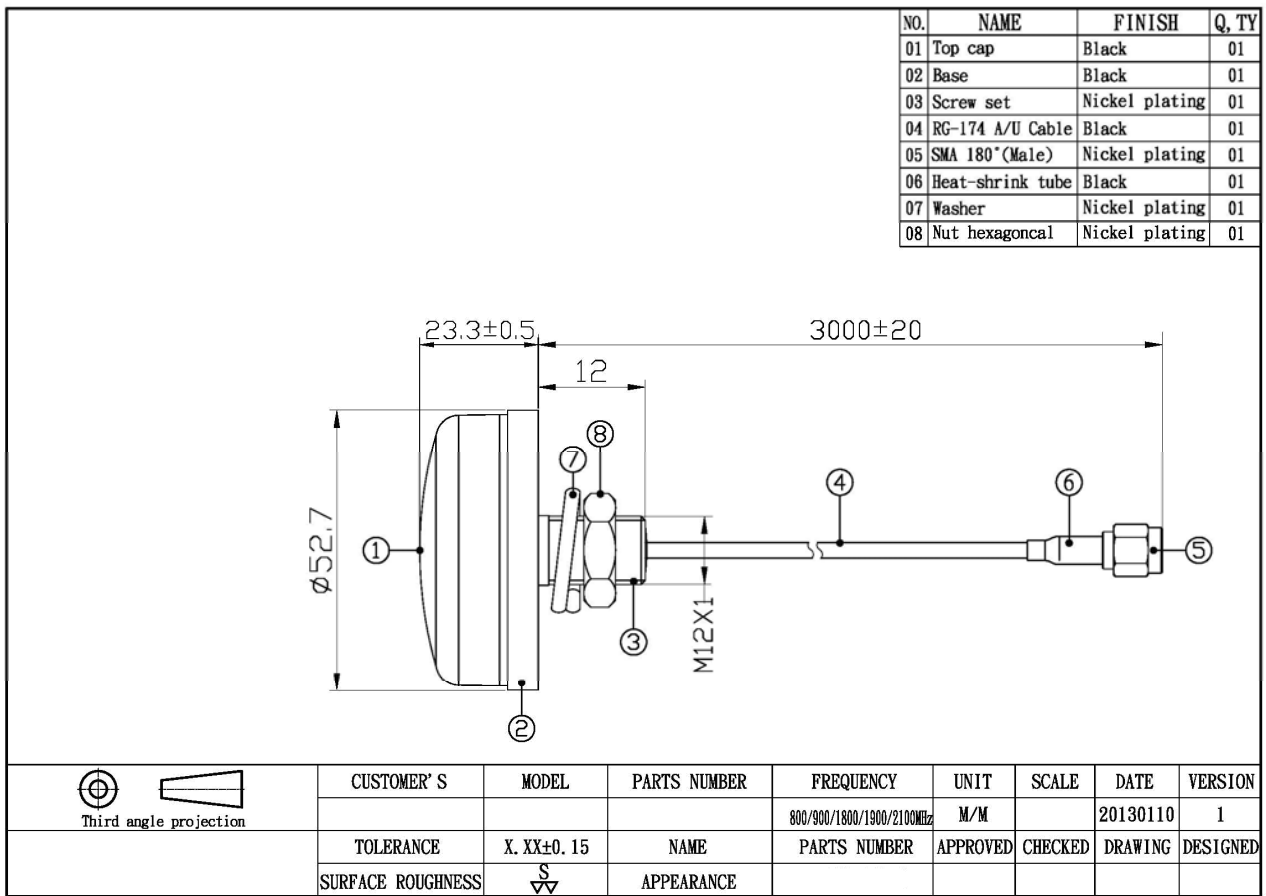
#### 1.1 Electrical Properties

Parameter	Description
Frequency Band	800/900/1800/1900/2100MHz
Nominal Impedance	50 ohm
V.S.W.R	2.0:1

#### 1.2 Mechanical Properties

Parameter	Description
Connector Type	SMA 180° (Male)
Antenna Dimensions	3000 mm ± 20
Antenna Cable Total Length	RG-174/AU
Antenna Color	Black
Operating Temperature Range	-30°C~+70°C
Storage Temperature Range	-40°C~+80°C

## 2. Appearance



## 3. FREQUENCY

