

Outdoor LTE/GSM/3G Antenna

MODEL: GSM-700



1. GENERAL DESCRIPTION

Model No	P/N
GSM700	GSM-700-0.5M-N(F)

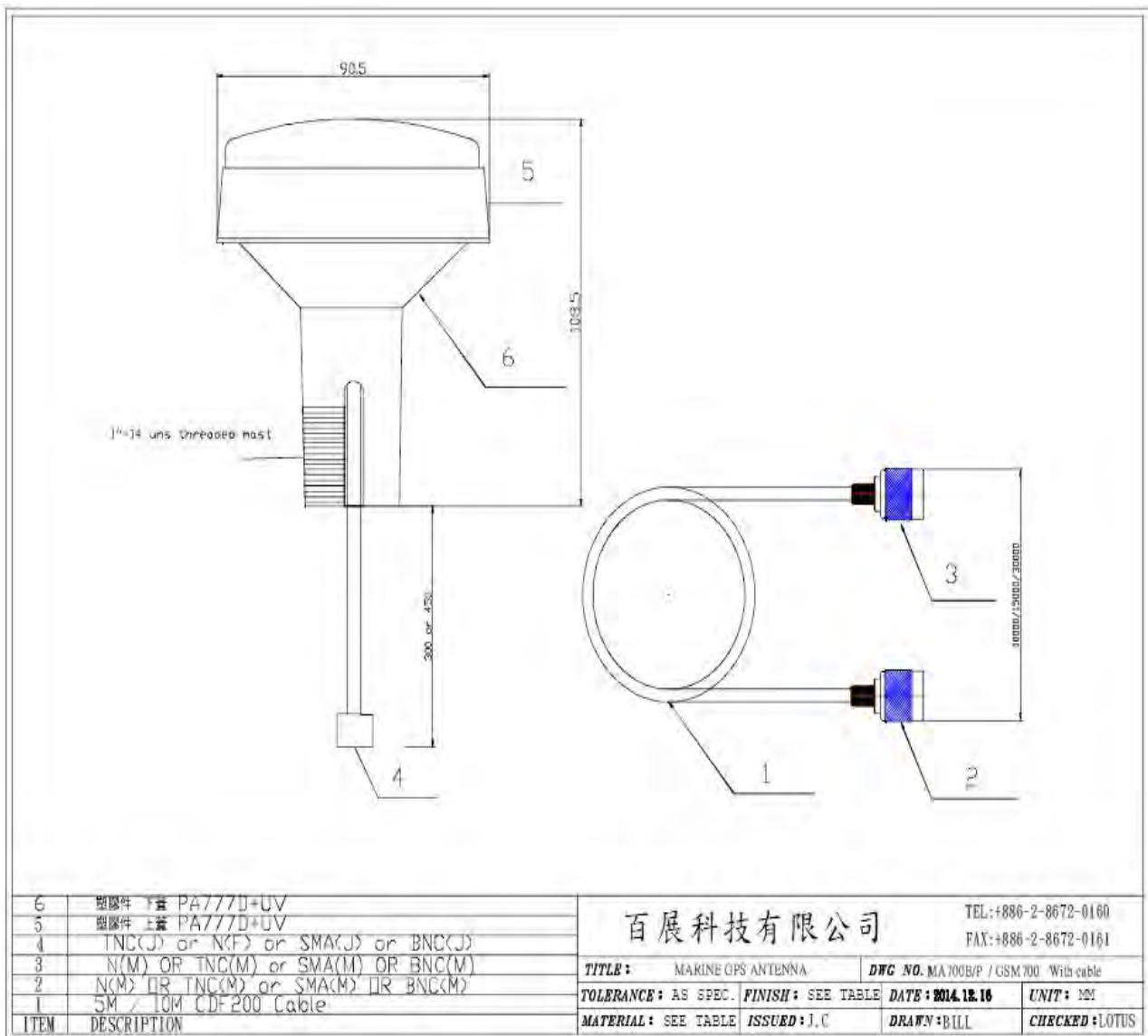
Below is a table summarizing the antenna design specification.

1.2 Electrical Properties

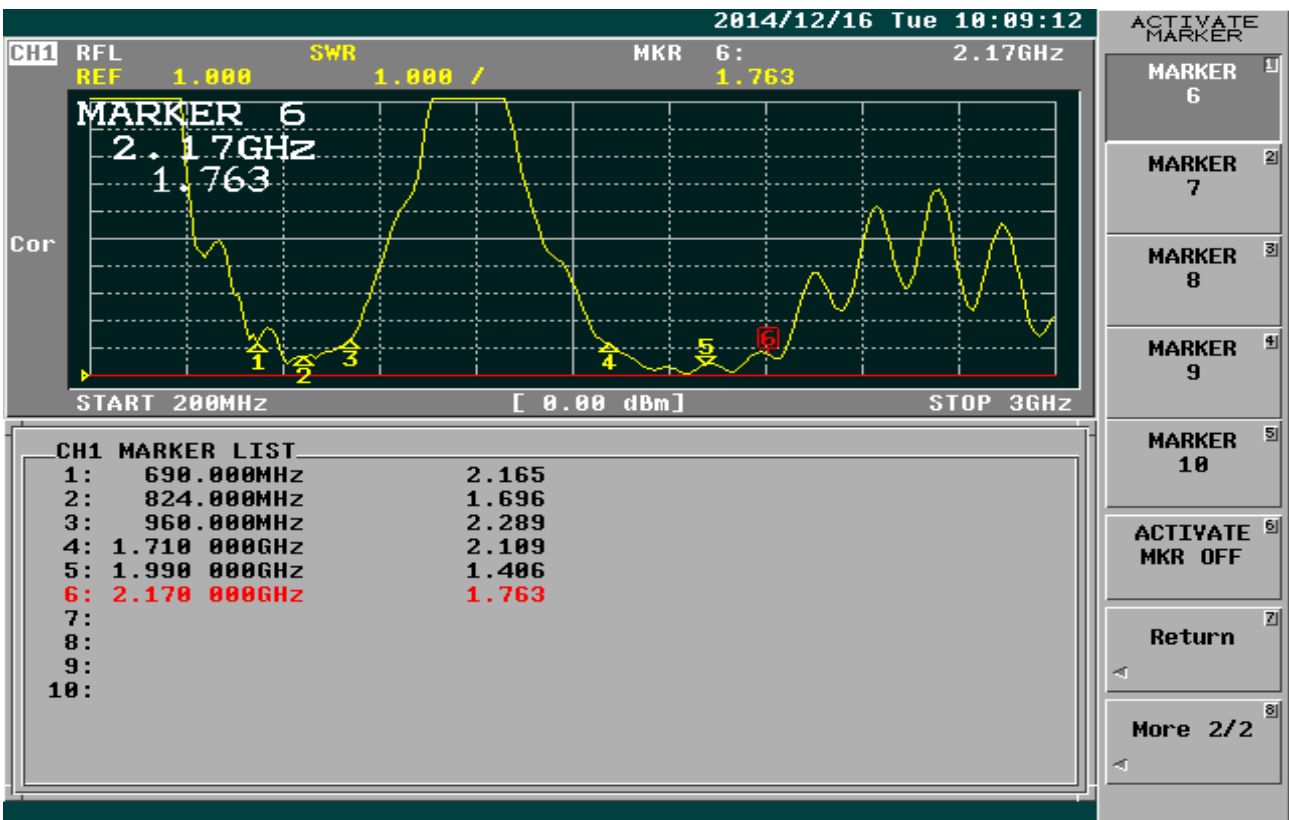
Parameter	Description
Frequency Band	690~960/1710~2170 Mhz
Nominal Impedance	50 ohm
Polarization	Vertical
Return Loss	-8db
V.S.W.R	2.5:1
Antenna Average Gain	0~3.5dBi (without cable)
Note: Gain includes the cable loss	

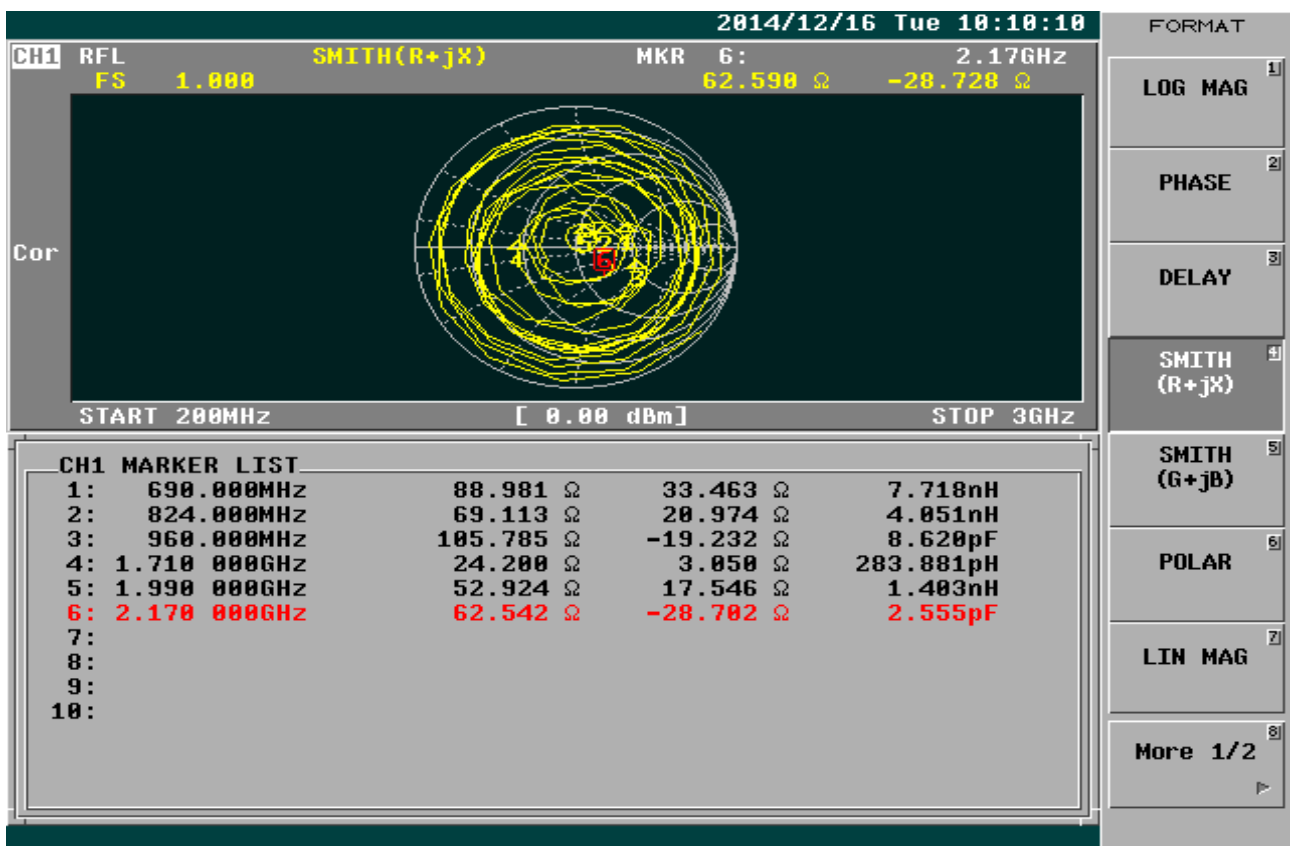
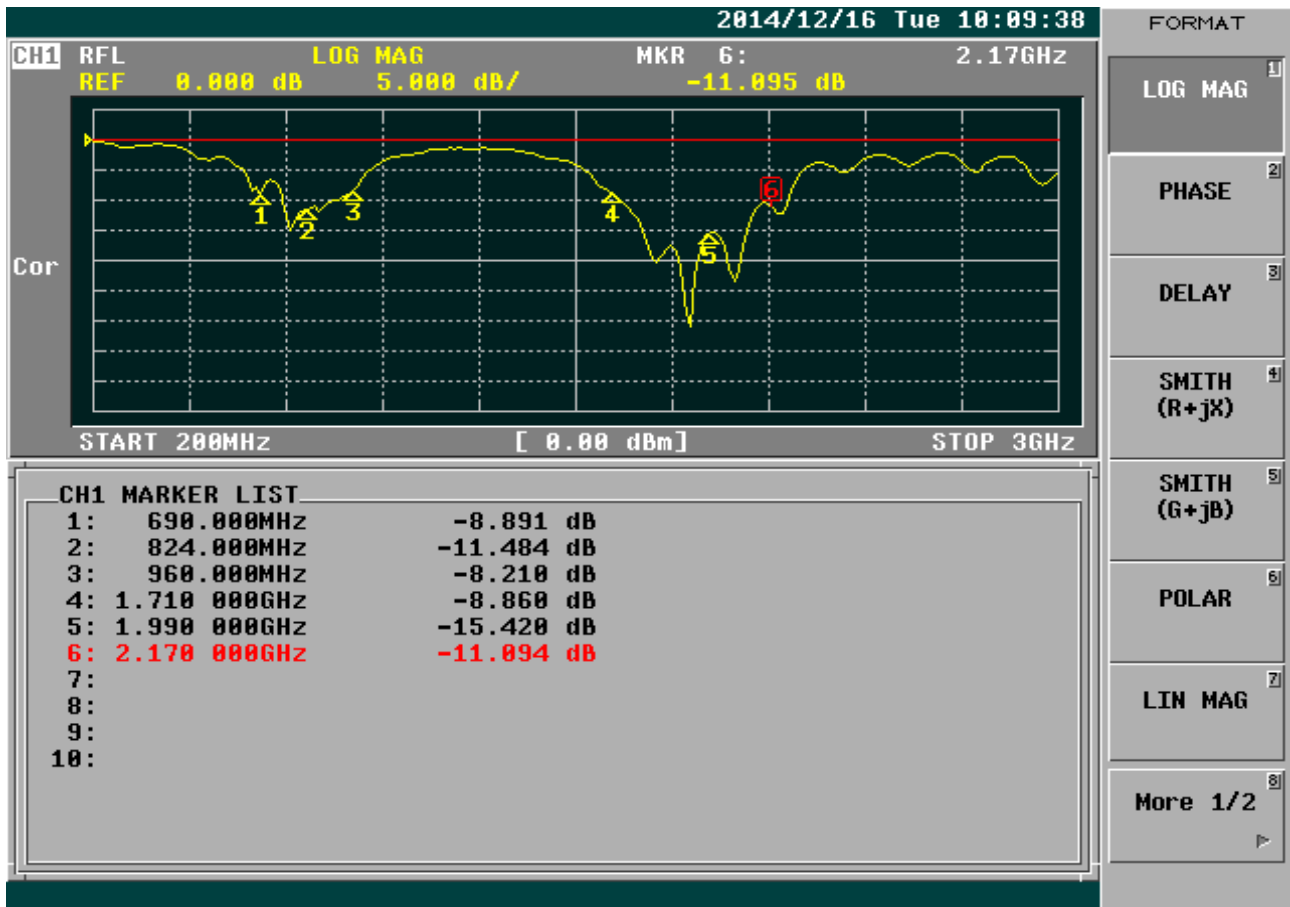
1.2 Mechanical Properties

Parameter	Description
Water Resistance	100% waterproof. IPX7
Connector Type	N(F) or SMA(F) or----
Antenna Dimensions	90mm(Dia.) x 108.5mm(H)
Antenna Cable Total Length	N(M)-CFD200-5M-SMA(M) or ---
Antenna Color	White
Operating Temperature Range	-30°C~+80°C
Storage Temperature Range	-40°C~+90°C



. FREQUENCY





Frequency (MHz)	690	824	869	960	1710	1920	2170	2500
Average Gain (dBi)	-1.13	-1.48	-1.99	-3.57	-2.73	-2.30	-3.15	-2.56
Peak Gain (dBi)	2.50	1.70	1.41	0.50	2.43	3.58	2.27	2.73
Efficiency (%)	77.06	71.14	63.21	43.96	53.38	58.94	48.37	55.51

