

# Marine GPS/ GLONASS & VHF Antenna

## MODEL: GVA-620G

FOR Marine VHF Radio & AIS SYSTEM & Orbcomm



### GPS antenna Specifications: GA62G

PHYSICAL CONDITION	
Constructions:	Polycarbonate radome, detachable cable/connector for easy mount, rubber-O-ring between top radome and screw base for waterproof
Dimensions:	60mm(Dia.) x 18.5mm(H)
Weight:	65grams (w/o cable & connector).
Color:	Standard in ivory white, other colours available upon request.
Mounting:	Bulkhead mount with 0.8 inch threaded wing nut (standard accessory).
Cable & Connector	
RF cable:	TNC(M) +10 meter RG58 +BNC(M) (standard) other length (optional)
Pulling strength:	6 Kg @ 5sec. molded plastic on connector end for strain relief.
Connector	TNC(F)
Antenna Element	
Center Frequency:	1575Mhz & 1596-1620 MHz
Polarization:	R.H.C.P. (Right Handed Circular Polarization).
Bandwidth	10 MHz min. @S11≤-10 dB, 24MHz typ. @S11<-8dB
Gain @ 10° Elevation:	2 dBi typical.
Axial Ratio:	3 dB max.
Output VSWR:	1.5 max
Output Impedance:	50 ohm
Low Noise Amplifier	
Power Gain:	1570 Mhz : 29db typ 1620 Mhz : 16db typ
Bandwidth:	50 MHz min.
BJTEK Navigation Inc.	1.5 typ

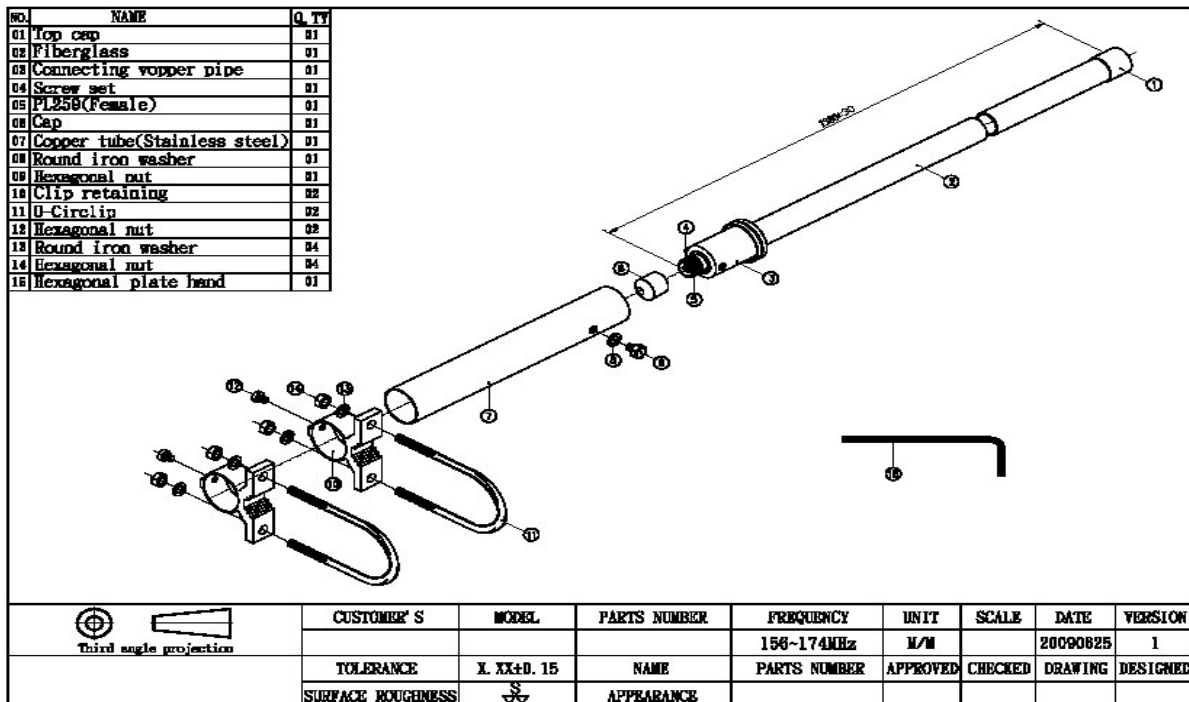
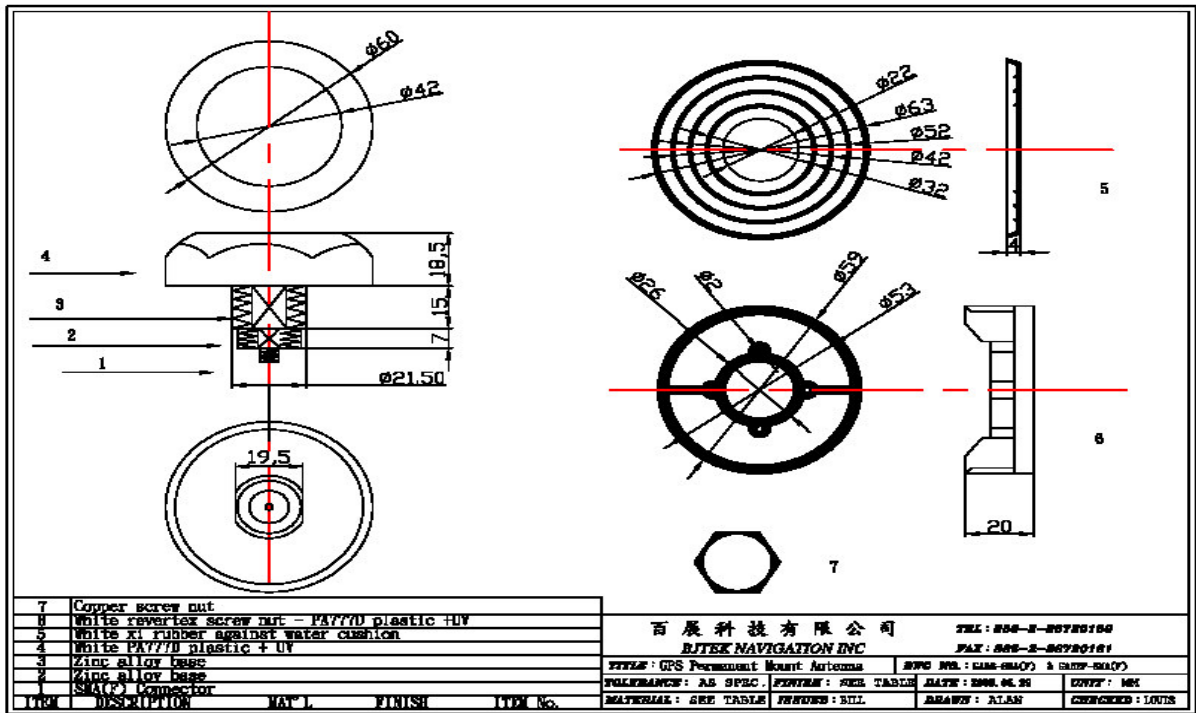
<b>Return Loss:</b>	20 dB min. @ Fo +/-50 Mhz.	<a href="https://www.bjnav.com/">https://www.bjnav.com/</a>
<b>Supply Voltages:</b>	2.3~5.5V DC.	
<b>Current Consumption:</b>	2.5V : 6.6mA Typ. 3V: 8.6mA Typ. 4V: 12.6mA Typ. 5V: 16.6mA Typ.	
<b>Output Impedance:</b>	50W ohm	
<b>Overall Performance: (antenna element, LNA &amp; coax cable)</b>		
<b>Center Frequency:</b>	1570 ~1620 Mhz.	
<b>Gain:</b>	At 90° vertical to sky 30 ± 4.5dBi (cable loss) Note:1 Mounted on the 60mm x 60mm square ground plane	
<b>Noise Figure:</b>	2.0 max.	
<b>Axial Ratio:</b>	3 dB max.	
<b>Bandwidth:</b>	10MHz min.	
<b>VSWR:</b>	2.0 max.	
<b>Output Impedance:</b>	50W ohm	
<b>Environmental</b>		
<b>Operating Temperature:</b>	-40°C~ +85°C.	
<b>Storage Temperature:</b>	-40°C~ +90°C.	
<b>Relative Humidity:</b>	95% non-condensing.	
<b>Water Resistance:</b>	100% waterproof.	

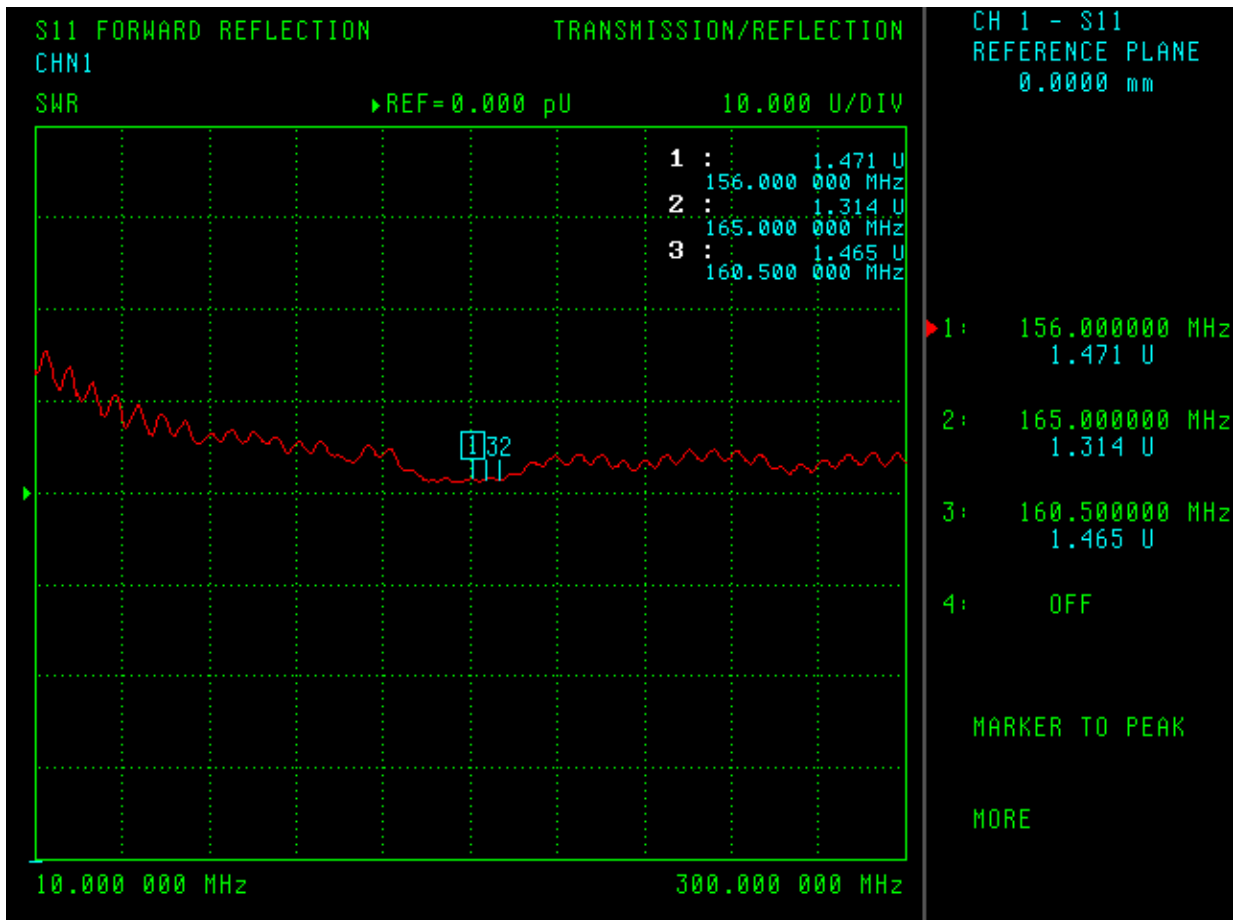
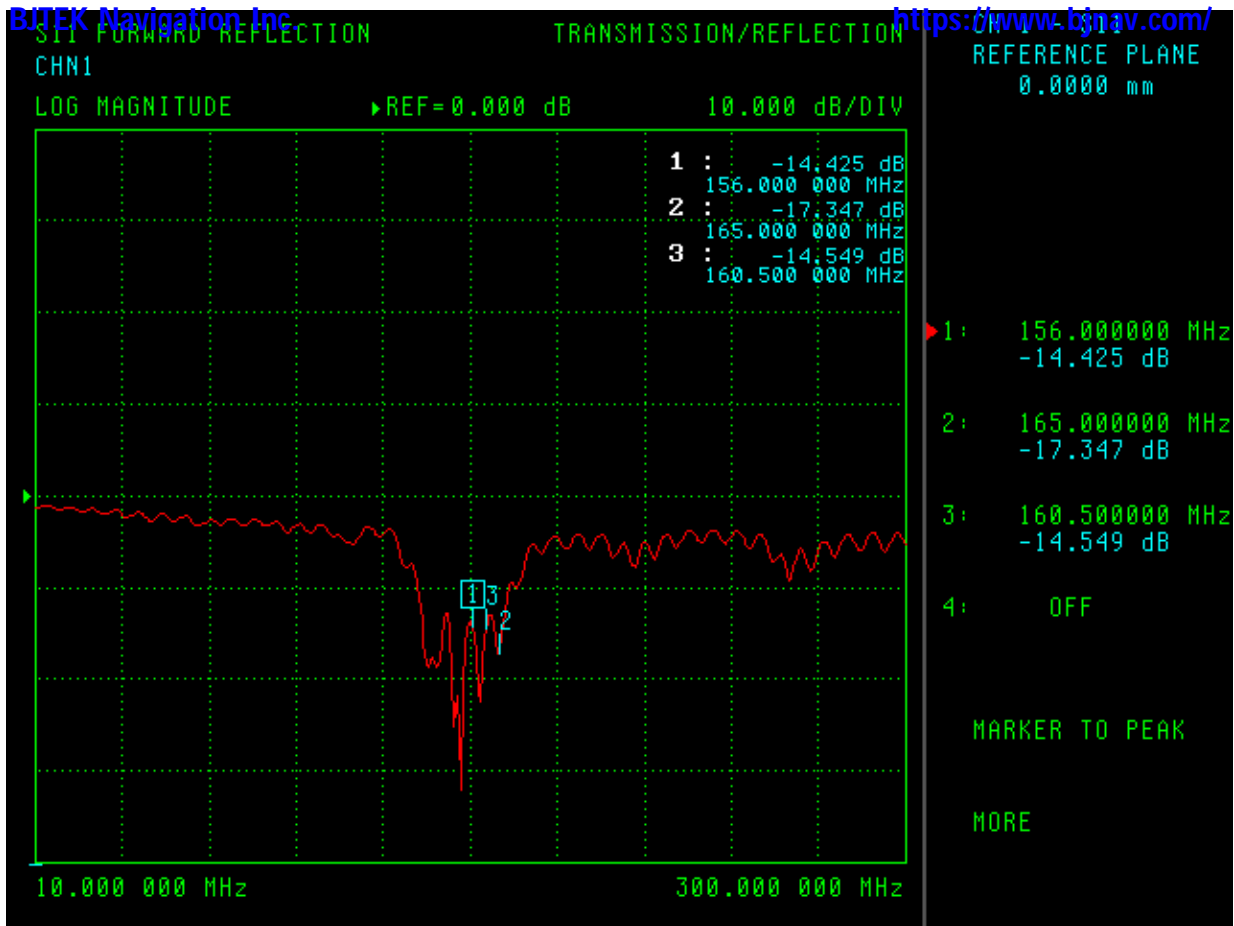
### Marine VHF Antenna Specifications: MVA-1400B

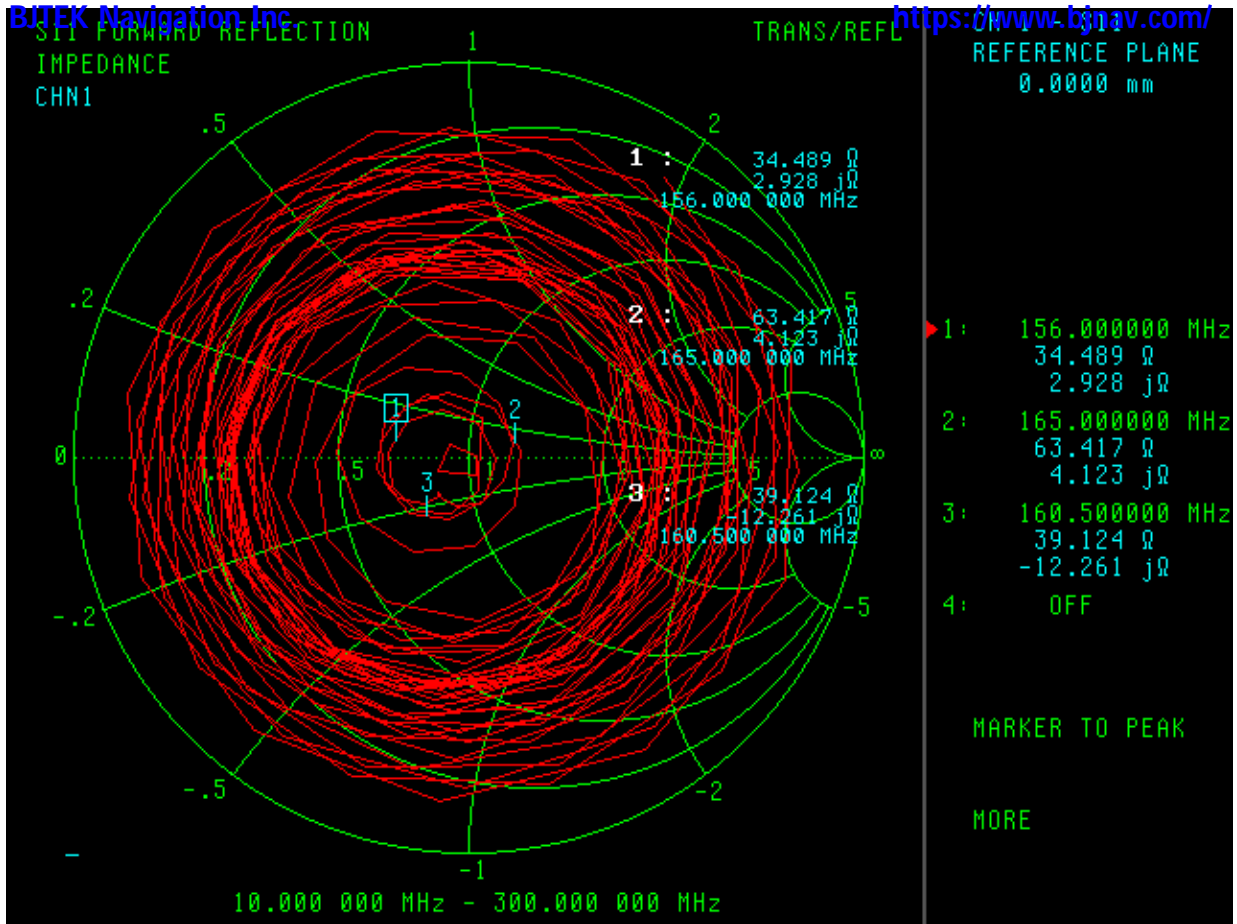
<b>Marinr VHF ANTENNA</b>	
<b>Fr :</b>	<b>156 ~ 165 Mhz</b>
<b>Gain:</b>	<b>3 ~6dB</b>
<b>Configuration :</b>	<b>1/2 wave</b>
<b>VSWR</b>	<b>2.0:1</b>
<b>Impedence:</b>	<b>50 ohm</b>
<b>Connector:</b>	<b>PL259(F) or N (F)</b>
<b>Ground</b>	<b>without</b>
<b>Dimension:</b>	<b>1380mm</b>
<b>Weight:</b>	<b>1Kg</b>

\* This specification is subject to change without prior notice

Data Updated: FEB.05, 2010







FB6 : SUS Base mounting

