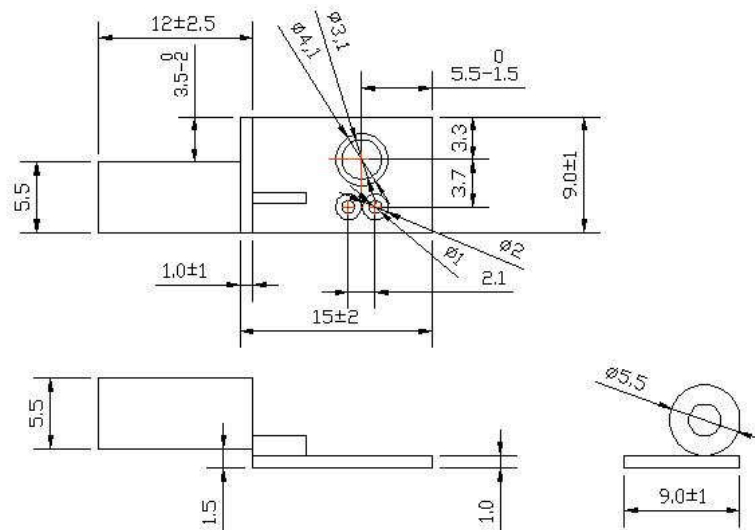


MODEL: IA-100

**Specifications:**

Frequency range:	824~960 / 1710~1990 / 1990~2170Mhz
-------------------------	------------------------------------

Gain:	0dB
--------------	-----

V.S.W.R:	2.5:1
-----------------	-------

Impedence:	50 ohm
-------------------	--------

Connector:	IPEX+30mm /40mm/50mm ---
-------------------	--------------------------

Dimension:	9.0 × 26.5 (L) × 6.5(H) mm +/- 2mm
-------------------	------------------------------------

Weight:	1g (With Connector)
----------------	---------------------

* This specification is subject to change without prior notice



2009/10/07 Wed 13:32:44

CH1 RFL SWR MKR 7: 1.52GHz
REF 1.800 1.800 / 1.410

MARKER 7
1.52GHz
1.410

Cor

START 40MHz [0.00 dBm] STOP 3GHz

CH1 MARKER LIST		
1:	824.000MHz	2.229
2:	960.000MHz	1.798
3:	1.710 000GHz	1.410
4:	1.990 000GHz	1.425
5:	2.170 000GHz	1.332
6:	2.400 000GHz	1.330
7:	1.520 000GHz	1.410
8:		
9:		
10:		

ACTIVATE MARKER

MARKER 6

MARKER 7

MARKER 8

MARKER 9

MARKER 10

ACTIVATE MKR OFF

Return

More 2/2