

UHF ANTENNA

Model : MA-410



1. GENERAL DESCRIPTION

P/N
MA-410-2.5-SMA(M)

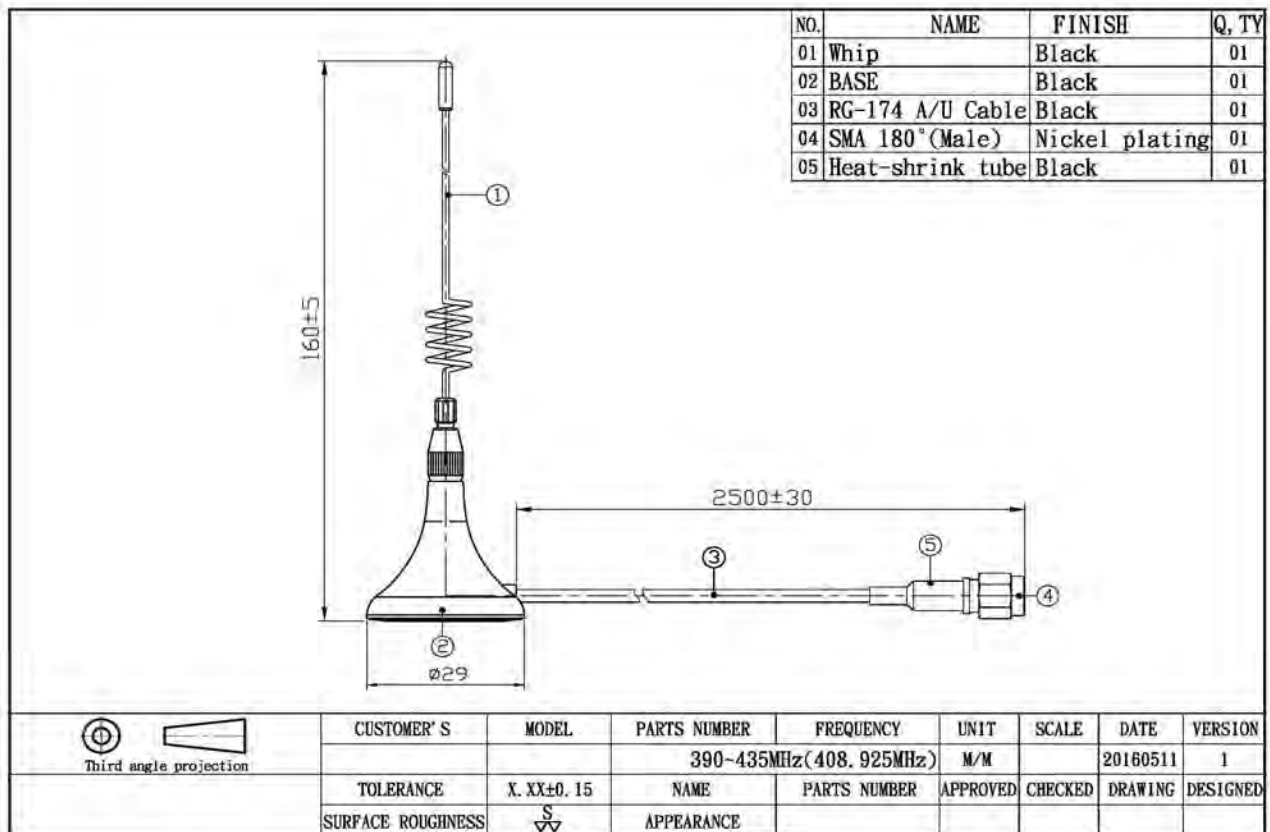
1.1 Electrica Properties

Parameter	Description
Frequency Band	390~435MHz(408.925MHz)
Nominal Impedance	50 ohm
Polarization	Vertical
V.S.W.R	2.0:1

1.2 Mechanical Properties

Parameter	Description
Antenna Type	External Antenna
Touch Type	Screw Type
Connector Type	SMA 180° (Male)/Nickel plating
Antenna Dimensions	160 mm ± 5
Antenna Cable Total Length	2500 mm +30
Antenna Color	Black
Operating Temperature Range	-30°C~+70°C
Storage Temperature Range	-30°C~+70°C

2. Appearance



3. Return Loss, V.S.W.R. and Smith Chart

