

# Outdoor 900Mhz Antenna

## MODEL: MA-96A



### 1. GENERAL DESCRIPTION

Model No	P/N
MA-96A	MA96A-1.5M-SMA(M)

Below is a table summarizing the antenna design specification.

#### 1.2 Electrica Properties

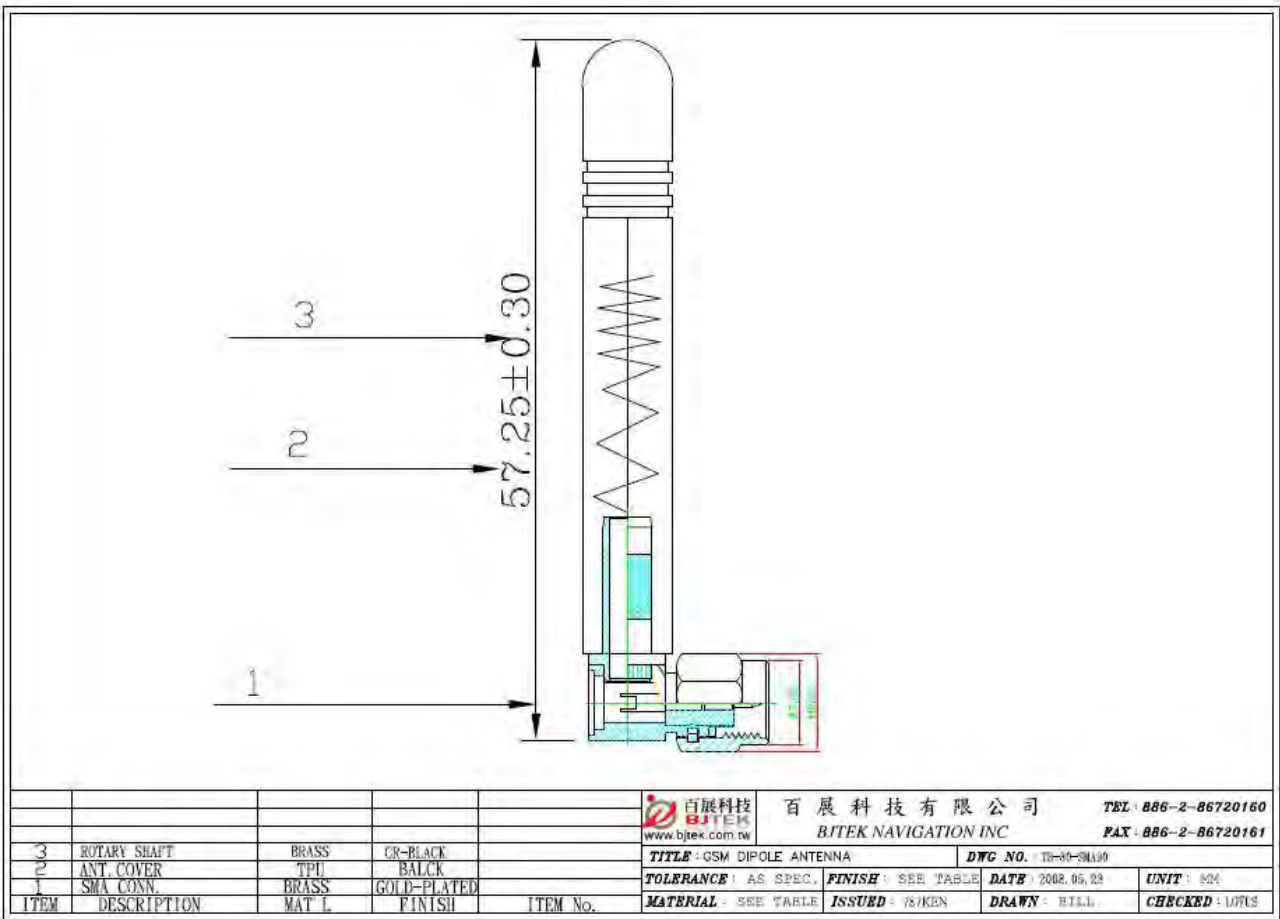
Parameter	Description
Frequency Band	860-960MHz
Nominal Impedance	50 ohm
Polarization	Vertical
Electrical Wave	Dipole
Return Loss	Please See Data-1
V.S.W.R	2.0:1
Antenna Average Gain	0~2dBi
Note: Gain includes the cable loss	

#### 1.2 Mechanical Properties

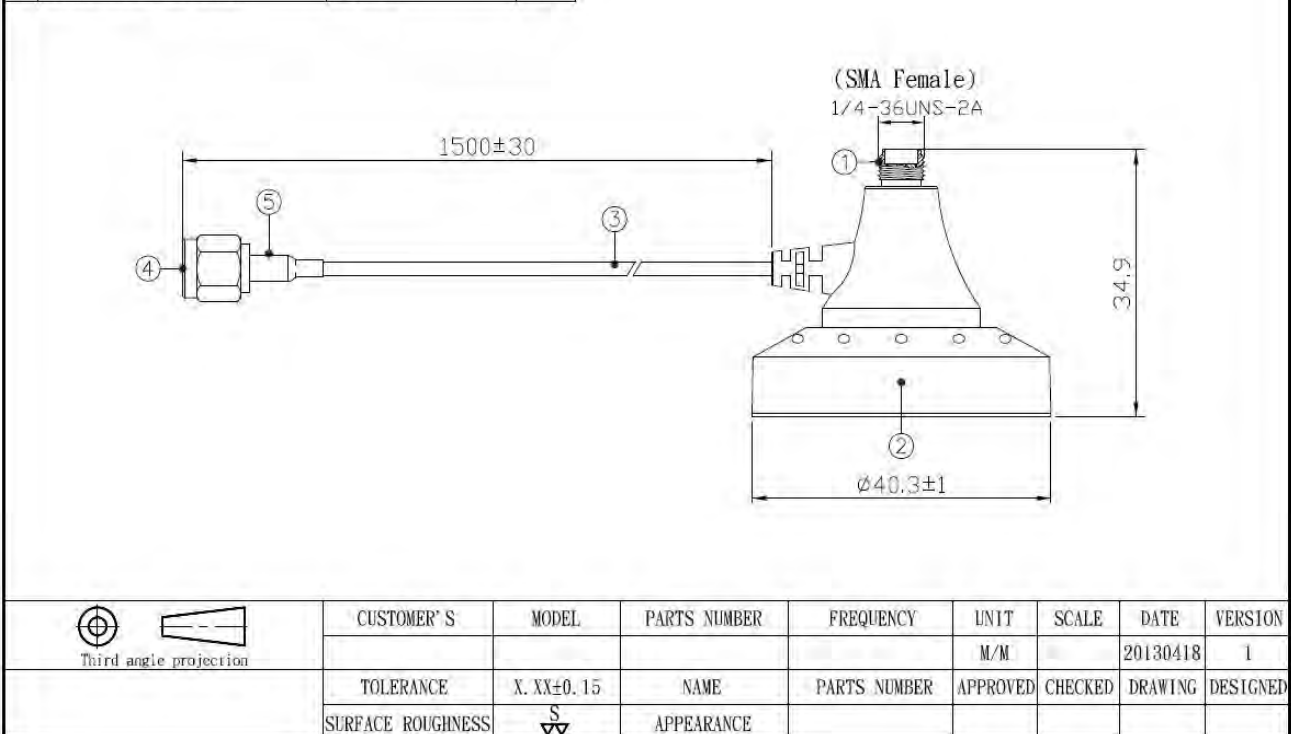
Parameter	Description
Antenna Type	External Antenna
Touch Type	Screw Type
Connector Type	SMA(M)

Antenna Dimensions	40.3(base OD) x 47.7(H) x 73.7(L)mm ± 3
Antenna Cable Total Length	1500 mm ± 20
Antenna Color	Black
Operating Temperature Range	-20°C~+60°C
Storage Temperature Range	-30°C~+70°C





NO.	NAME	FINISH	Q, TY
01	SMA 180°(Female)	Colden plating	01
02	Base ABS	Black	01
03	RG-174 A/U Cable	Black	01
04	SMA 180°(Male)	Colden plating	01
05	Heat-shrink tube	Black	01



2. Frequenc

