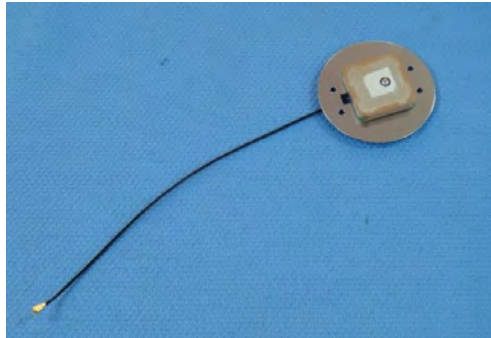


Ceramic 2.4G Antenna module

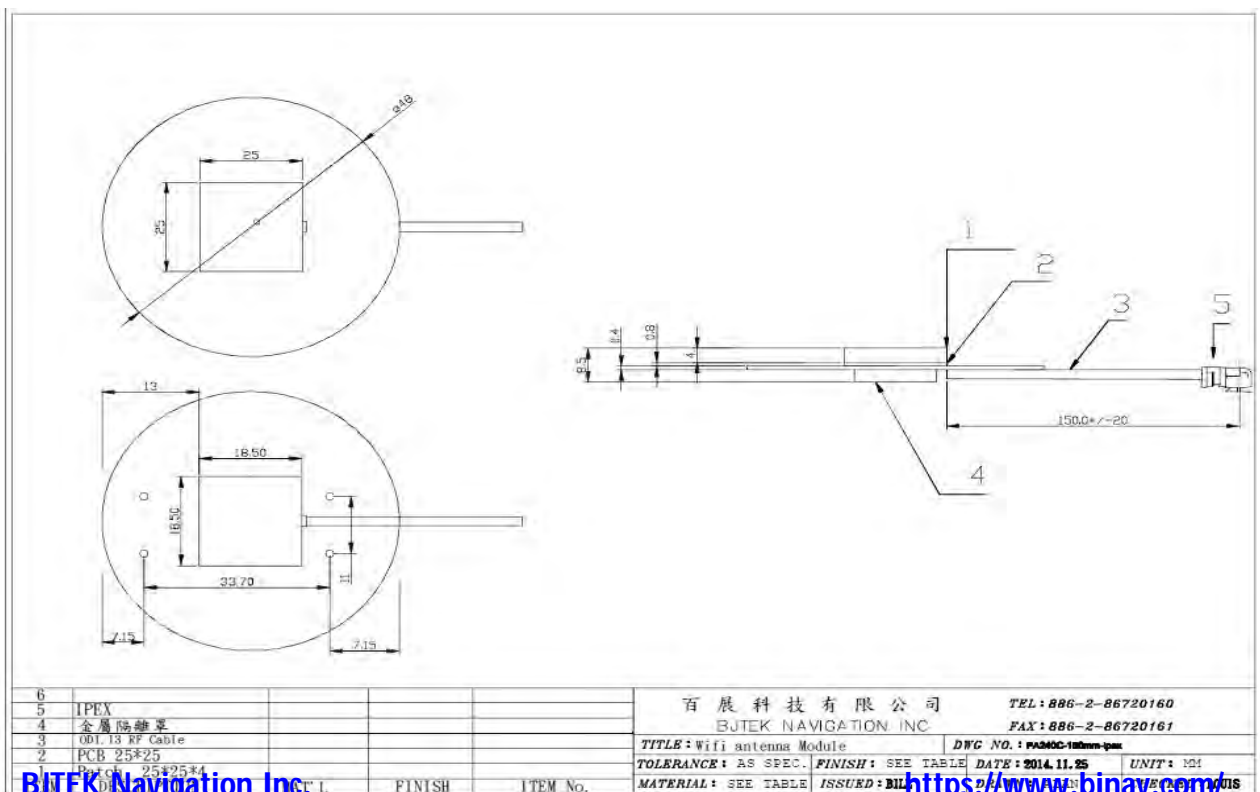
MODEL: PA-240C

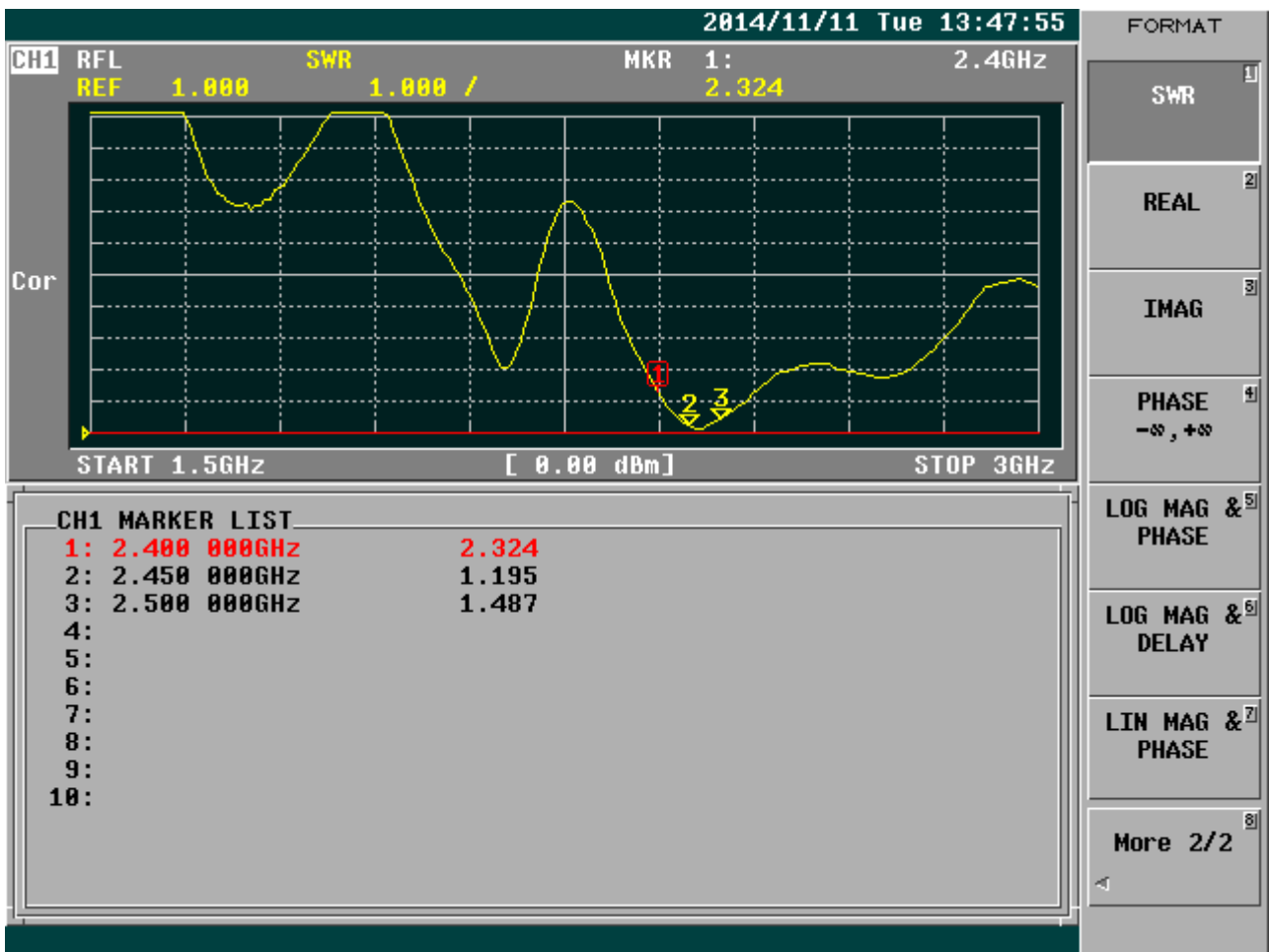
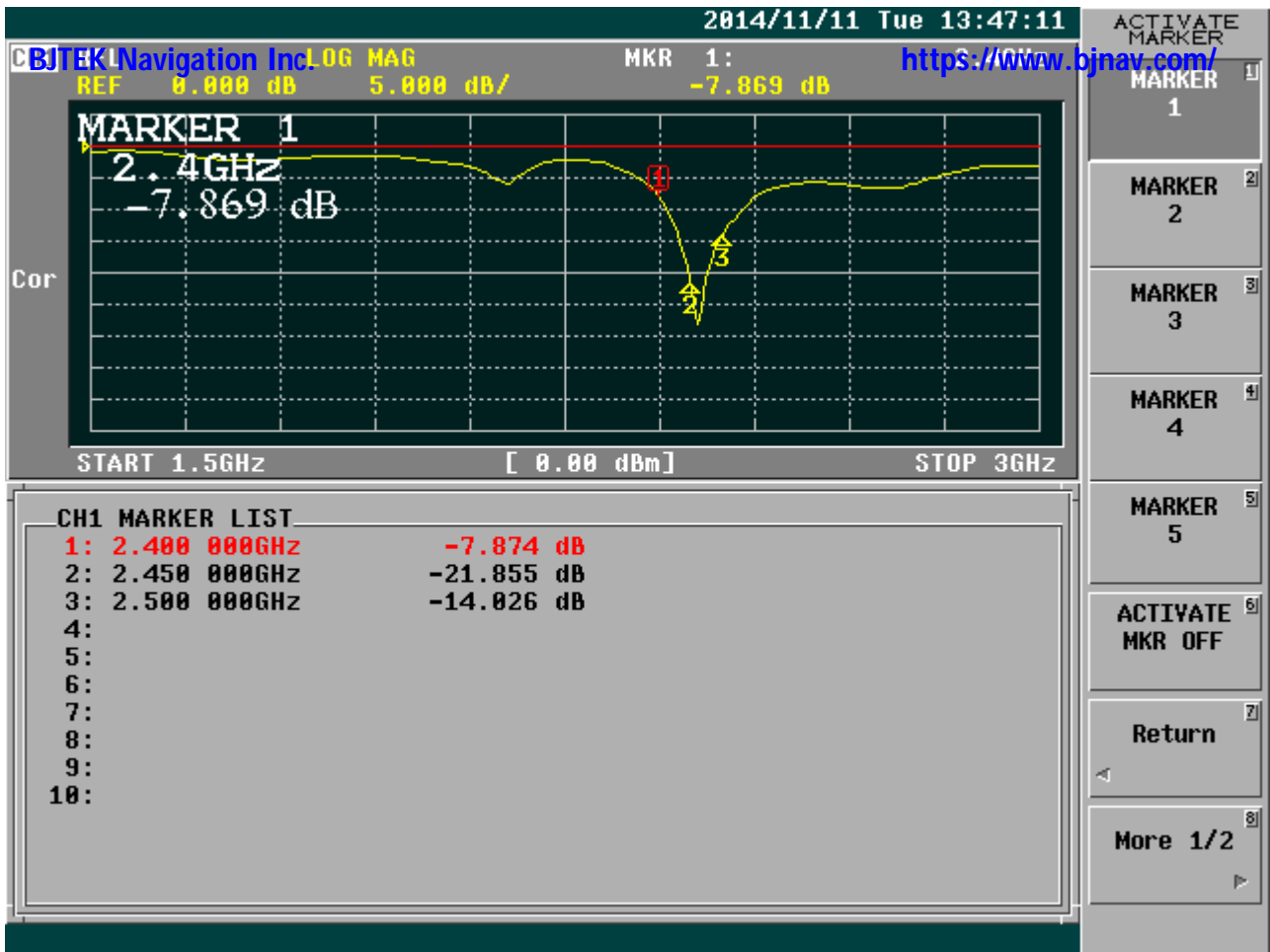
P/N:PA-240C-113-150-IPEX



SPECIFICATION-ELECTRIC

1.	FREQUENCE	2.400-2.500GHz
2.	Polarization	Right-hand Circular
3.	IMPEDANCE	50 Ohm
4.	V.S.W.R	2.5 Max
5.	GAIN	3 dBi
6.	OPERATING TEMPERATURE	-40°C to +85°C
7.	Size	48 X 8.5mm (+/-0.5mm)







Frequency (MHz)	2400	2450	2500
Average Gain(dBi)	-4.67	-2.69	-2.56
Peak Gain (dBi)	0.60	2.75	2.76
Efficiency (%)	34.10	53.80	55.42

