

CAR LTE / GSM Passive Antenna

MODEL: TC-821C

Inside Glass Antenna for 690~2700MHz



1. GENERAL DESCRIPTION

Model No	P/N
	TC-821C-3M-SMA(M)

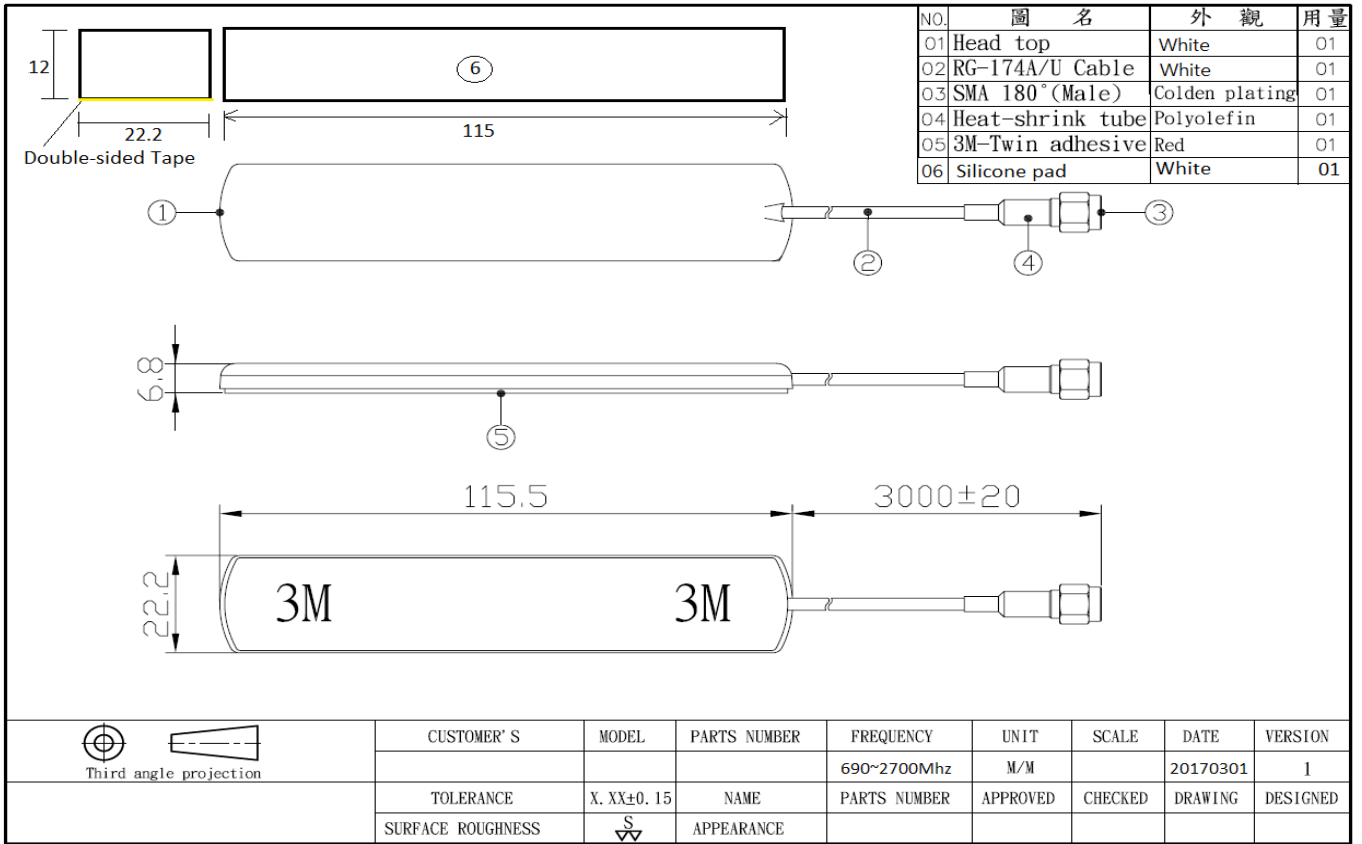
1.1 Electrical Properties

Parameter	Description
Frequency Band	690~960/1710~2700Mhz
Nominal Impedance	50 ohm
Polarization	Vertical
Electrical Wave	Dipole
V.S.W.R	2.5:1
Antenna Peak Gain	0dBi
Note: Gain includes the cable loss 1.2db/M	

1.2 Mechanical Properties

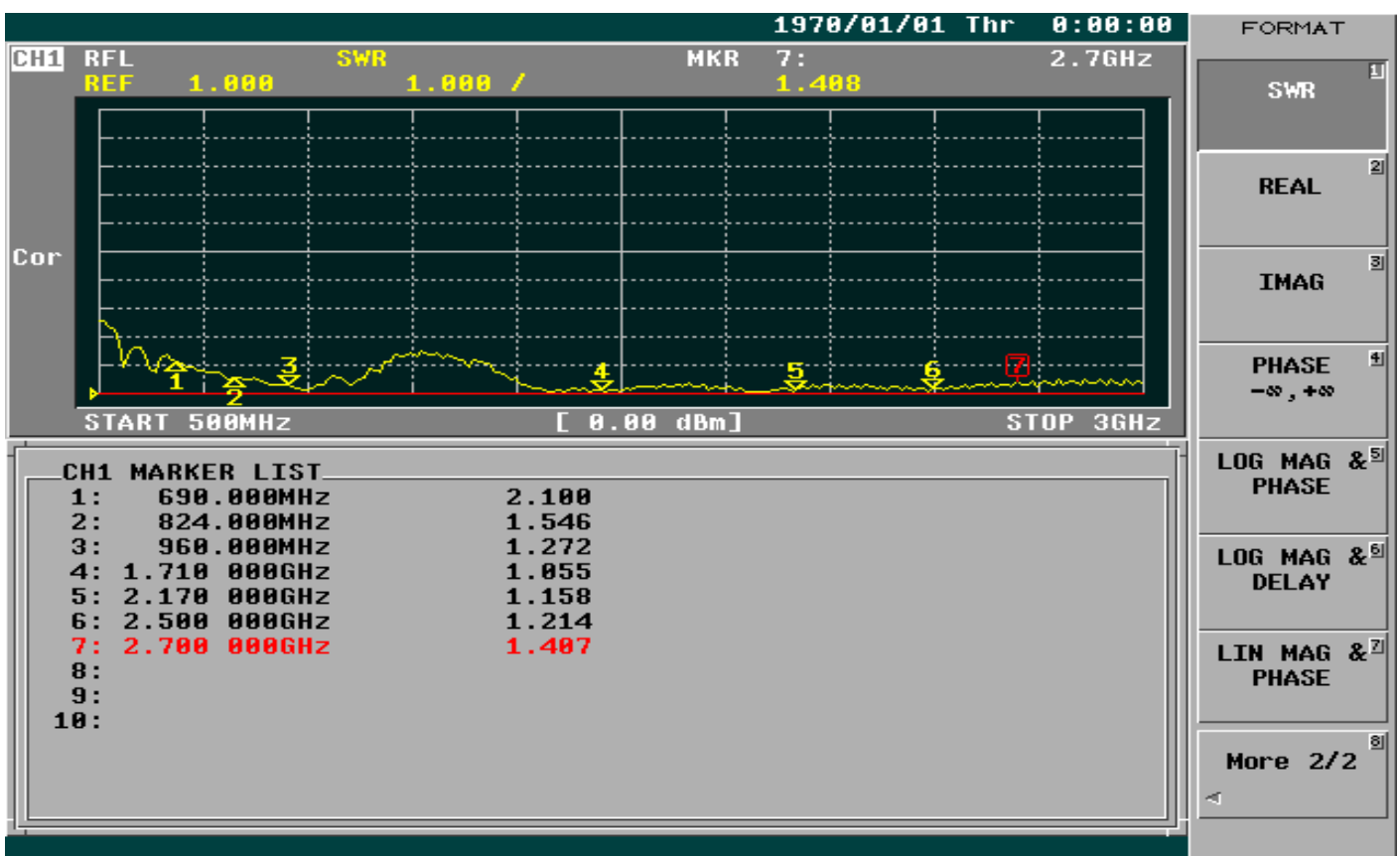
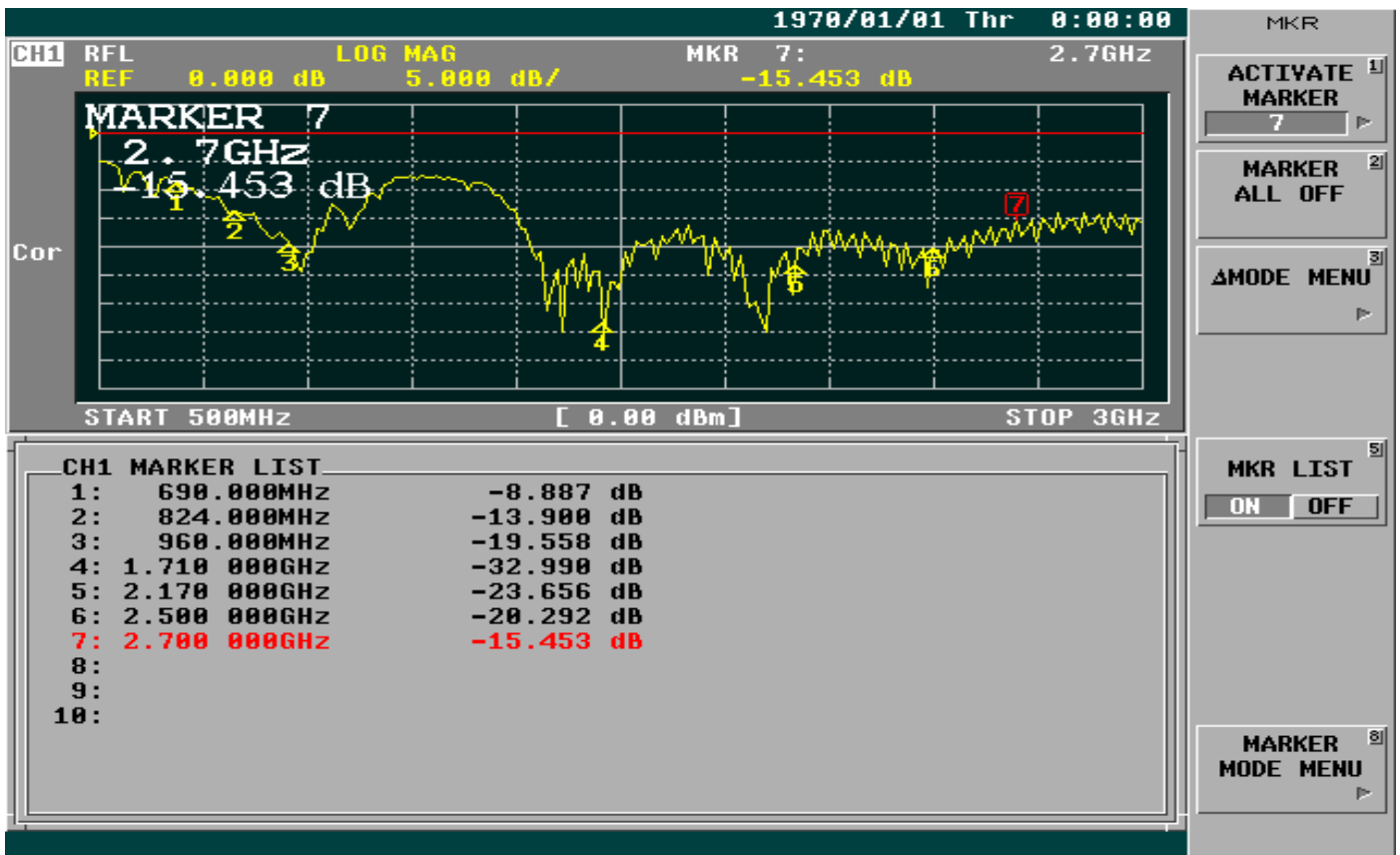
Parameter	Description
Antenna Material	ASA778T – UL94-HB
Connector Type	SMA 180° male
Antenna Dimensions	115 mm ± 5
Antenna Cable Total Length	RG174-3000mm ± 20 UL94-V0
Antenna Color	White
Operating Temperature Range	-40°C~+80°C
Storage Temperature Range	-40°C~+80°C
Waterproof	IPX7

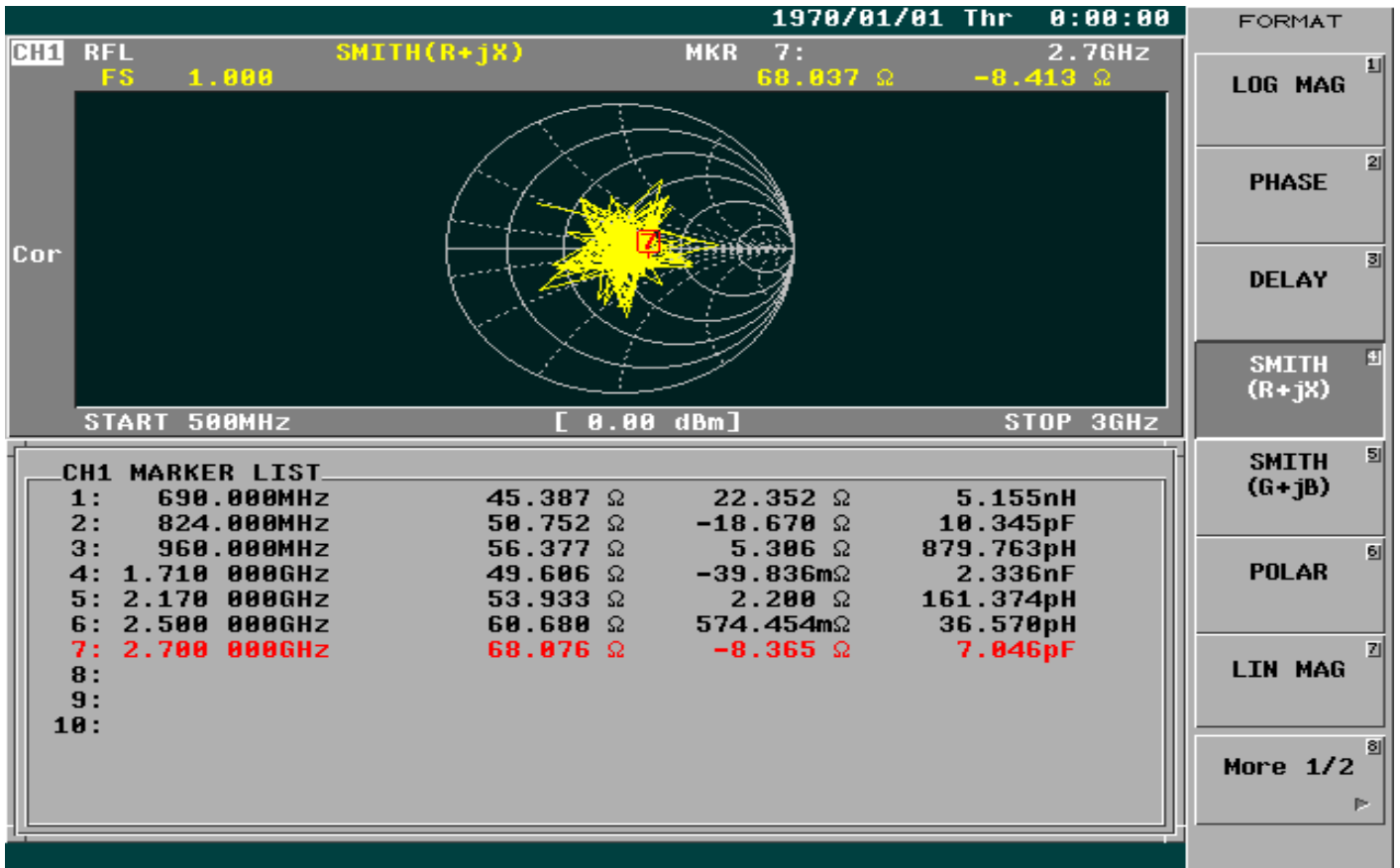
2. Appearance



3. FREQUENCY : free space







Test result:

Frequency (MHz)	698	815	830	860	875	960	1710	1990	2170	2400	2450	2500	2700
Peak Gain (dBi)	1.51	0.76	1.3	0.43	0.43	0.85	0.2	0.25	-0.1	-2.0	-1.7	-1.38	-1.84
Efficiency (%)	47.97	41.46	44.03	40.0	37.43	40.21	33.04	34.89	27.41	21.6	21.37	22.64	17.51

