

Car UHF Antenna

Model : TH-390B



1. GENERAL DESCRIPTION

P/N
TH-390B-PL259(M)

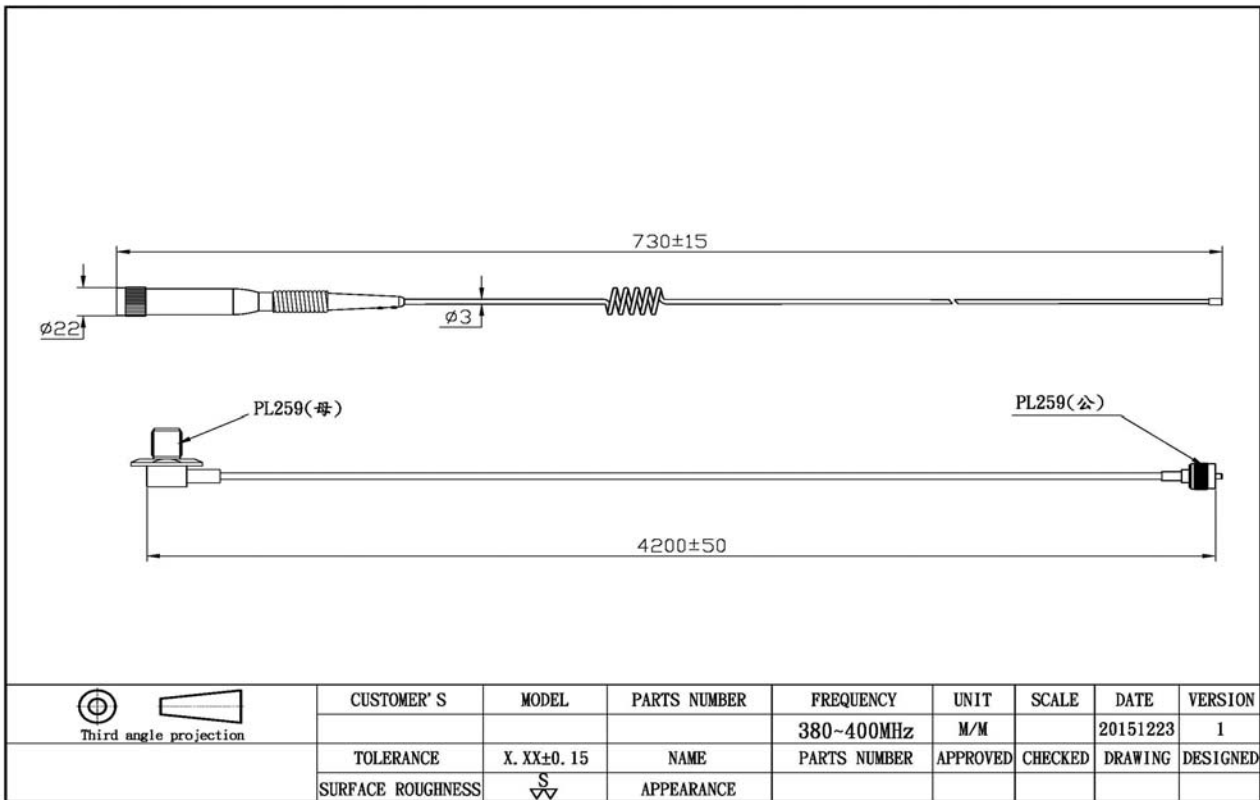
1.1 Electrical Properties

Parameter	Description
Frequency Band	380~400MHz
Nominal Impedance	50 ohm
Polarization	Vertical
V.S.W.R	2.0:1

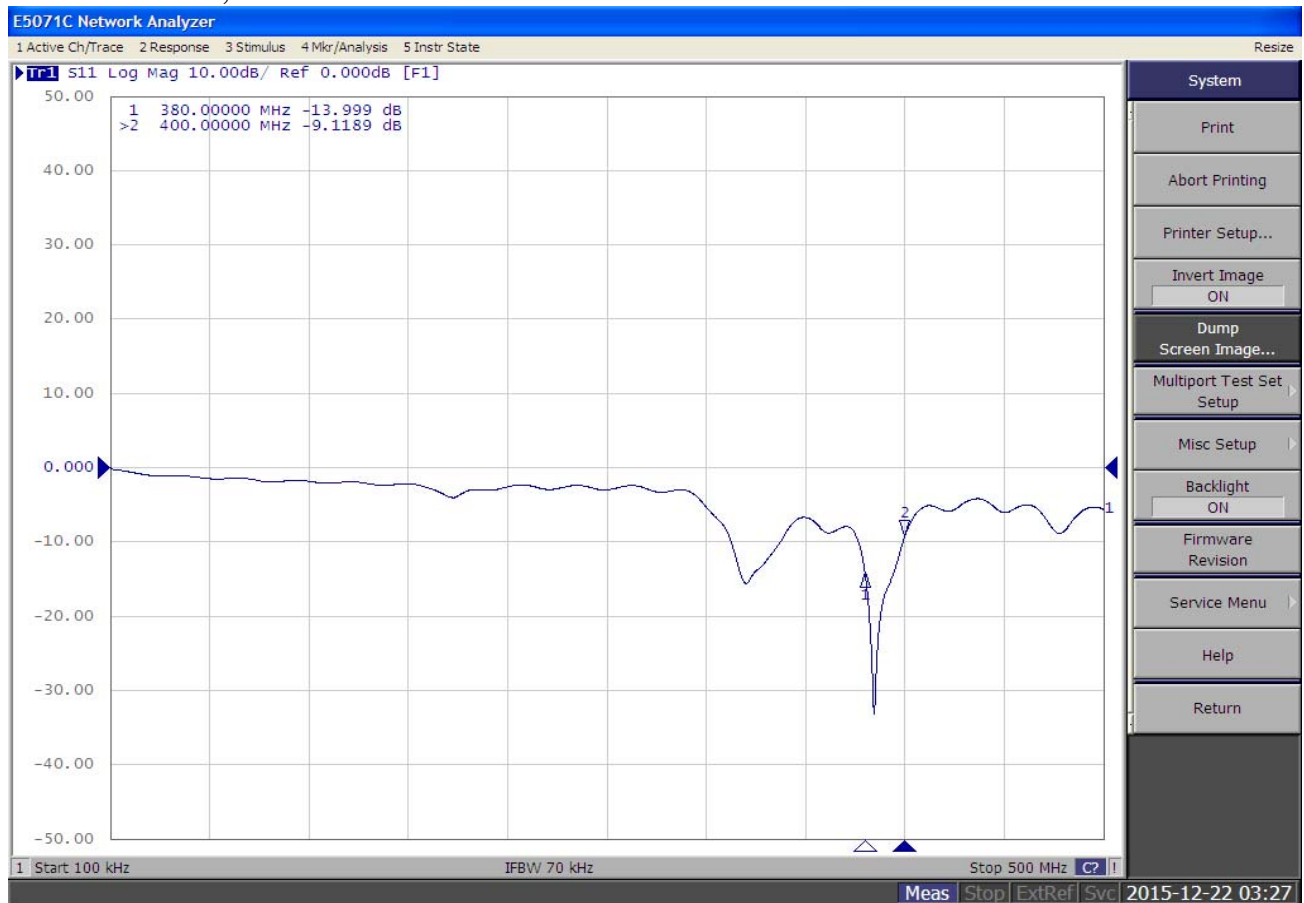
1.2 Mechanical Properties

Parameter	Description
Antenna Type	External Antenna
Touch Type	Screw Type
Connector Type	PL 259 (Male)
Antenna Dimensions	730 mm \pm 15/CFD200 Cable:4200 mm \pm 50(PL 259 Female+PL 259 Male)
Operating Temperature Range	-30°C~+80°C
Storage Temperature Range	-30°C~+80°C

2. APPEARANCE:



3. Return Loss, V.S.W.R. and Smith Chart

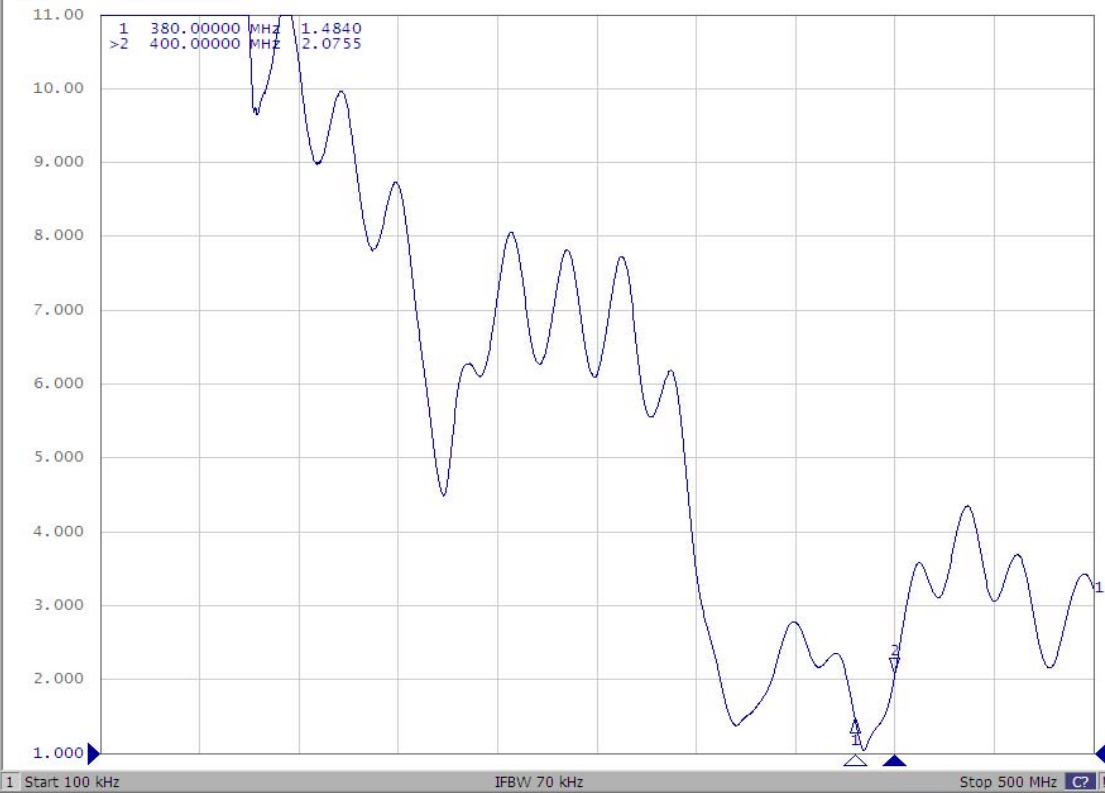


E5071C Network Analyzer

1 Active Ch/Trace 2 Response 3 Stimulus 4 Mkr/Analysis 5 Instr State

Resize

Tr1 S11 SWR 1.000/ Ref 1.000 [F1]



- Format
- SWR
- Log Mag
- Phase
- Group Delay
- Smith
- Polar
- Lin Mag
- SWR
- Real
- Imaginary
- Expand Phase
- Positive Phase
- Return

1 Start 100 kHz IFBW 70 kHz Stop 500 MHz

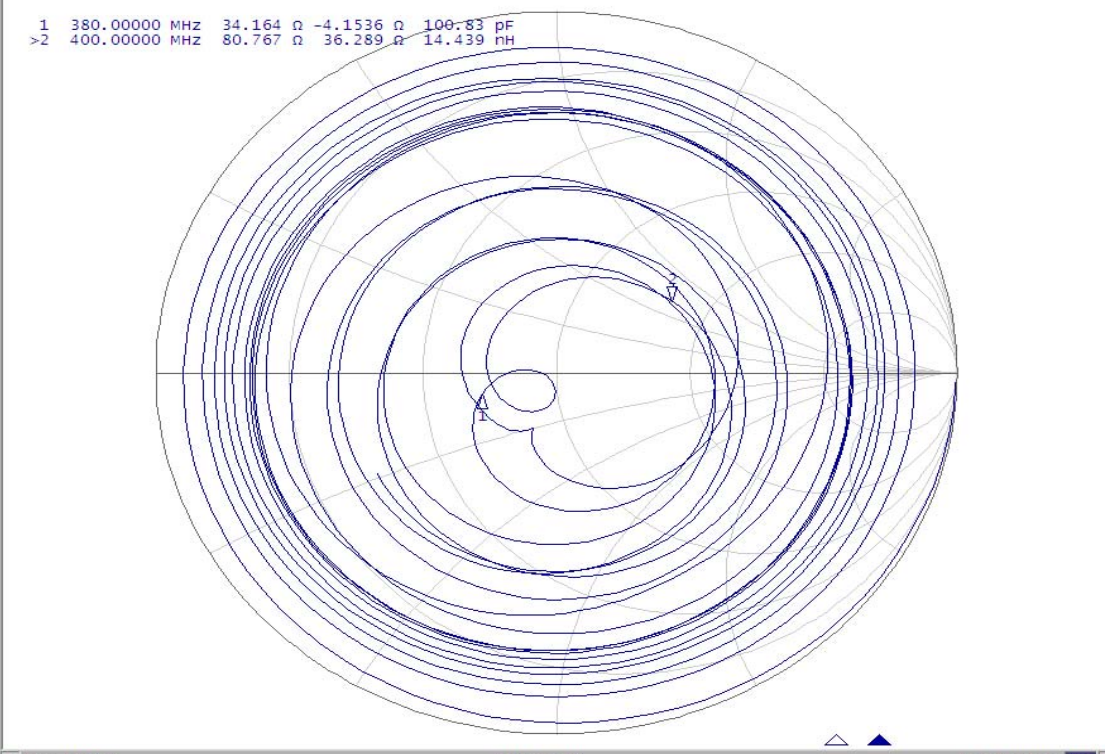
Meas Stop ExtRef Svc 2015-12-22 03:28

E5071C Network Analyzer

1 Active Ch/Trace 2 Response 3 Stimulus 4 Mkr/Analysis 5 Instr State

Resize

Tr1 S11 smith (R+jX) scale 1.000u [F1]



- Format
- Smith (R+jX)
- Log Mag
- Phase
- Group Delay
- Smith
- R + jX
- Polar
- Lin Mag
- SWR
- Real
- Imaginary
- Expand Phase
- Positive Phase
- Return

1 Start 100 kHz IFBW 70 kHz Stop 500 MHz

Meas Stop ExtRef Svc 2015-12-22 03:28