

## 2.4/5.8G WIFI Antenna

### MODEL: TH-2458D



#### 1.. GENERAL DESCRIPTION

Model No	P/N
TH-2458D	TH2458D-SMA(M)

Below is a table summarizing the antenna design specification.

#### 1.1 Electrical Properties

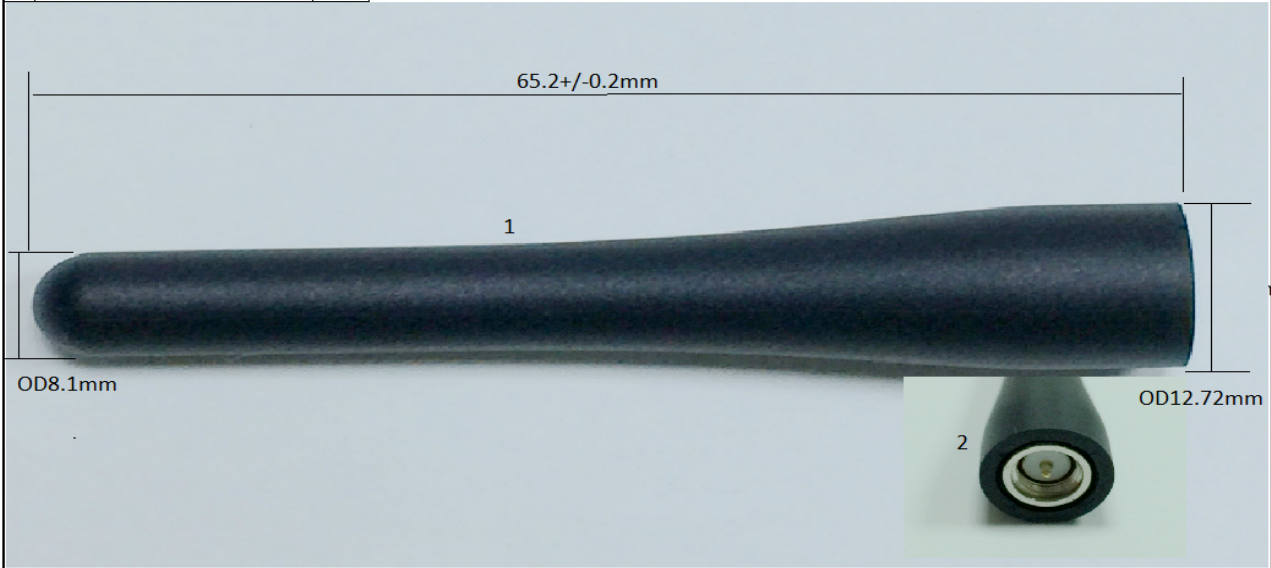
Parameter	Description
Frequency Band	2.4~2.5 & 5.1~5.85GHz
Nominal Impedance	50 ohm
Polarization	Vertical
Electrical Wave	$1/4 \lambda$
Admitted Power radiation	1W
V.S.W.R	3.0:1 Max
Antenna Average Gain	3-5 dB
Note: Gain includes the cable loss	

#### 1.2 Mechanical Properties

Parameter	Description
Antenna Type	External Antenna
Material	TPU
Touch Type	Screw Type
Connector Type	SMA (Male)

Antenna Dimensions	OD12.4 x 50.4mm±0.5
Antenna Color	Black
Operating Temperature Range	-30°C~+70°C
Storage Temperature Range	-35°C~+80°C
Waterproof	IPX7 (Must match the silicone pad - optional)

NO.	NAME	Q, TY
01	TPU Tube	01
02	SMA(M)	01

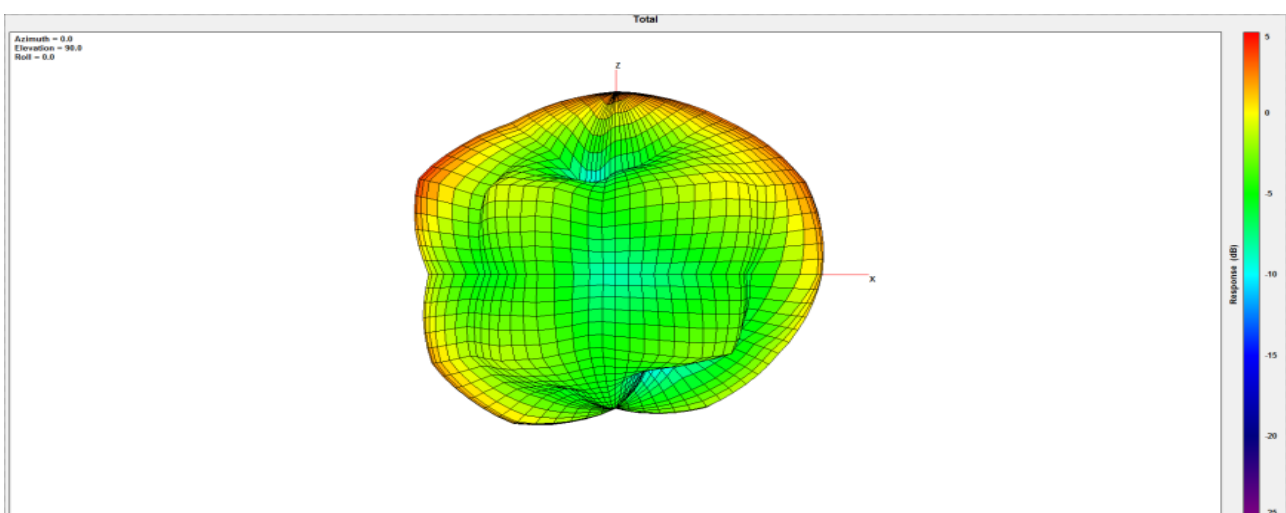
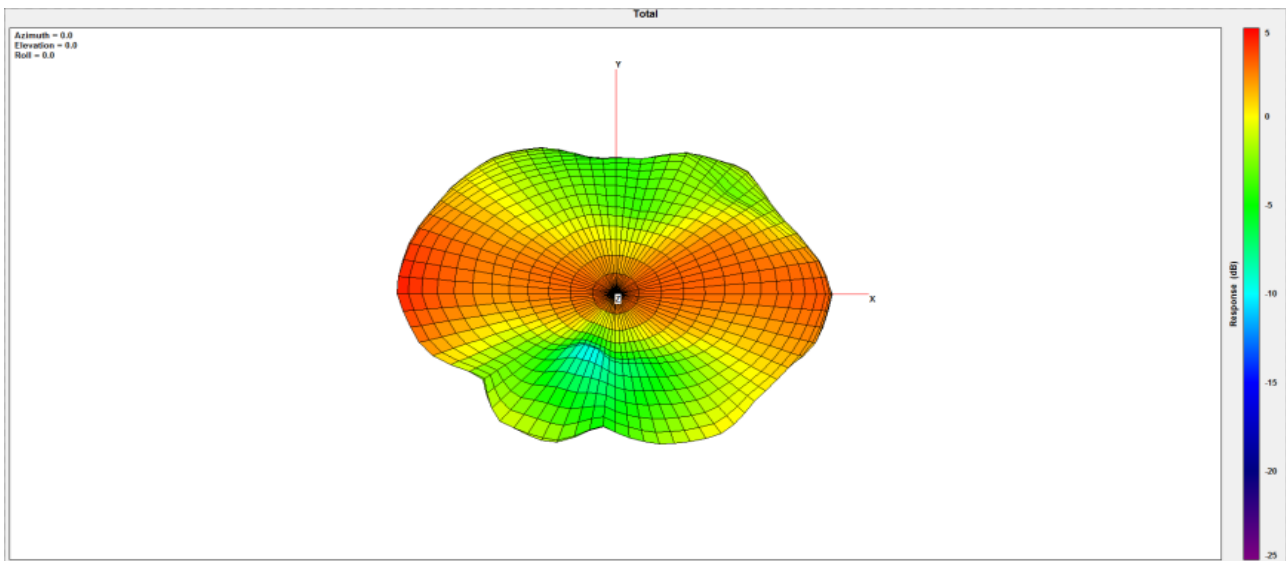


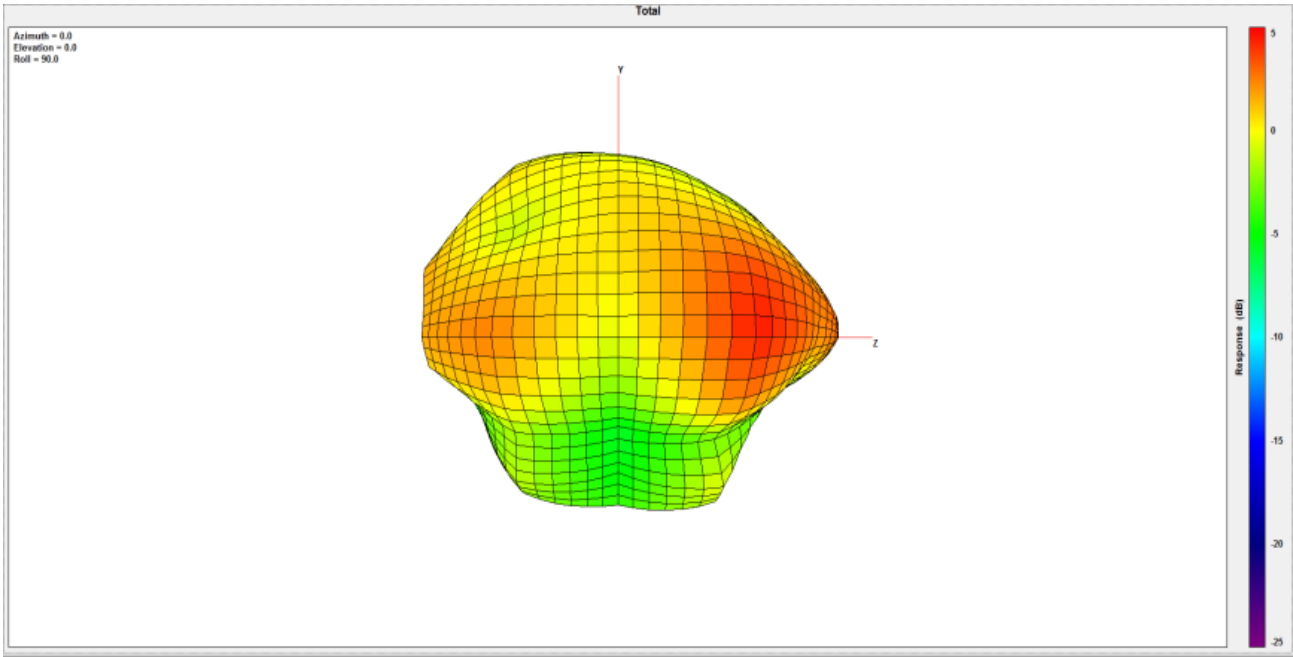
 Third angle projection	CUSTOMER'S	MODEL	PARTS NUMBER	FREQUENCY	UNIT	SCALE	DATE	VERSION
		TH2458D		2.4~2.5/5.1~5.85GHZ	M/M		20160318	1
	TOLERANCE	X.XX±0.15	NAME	PARTS NUMBER	APPROVED	CHECKED	DRAWING	DESIGNED
	SURFACE ROUGHNESS	$\sqrt{\text{V}}$	APPEARANCE					



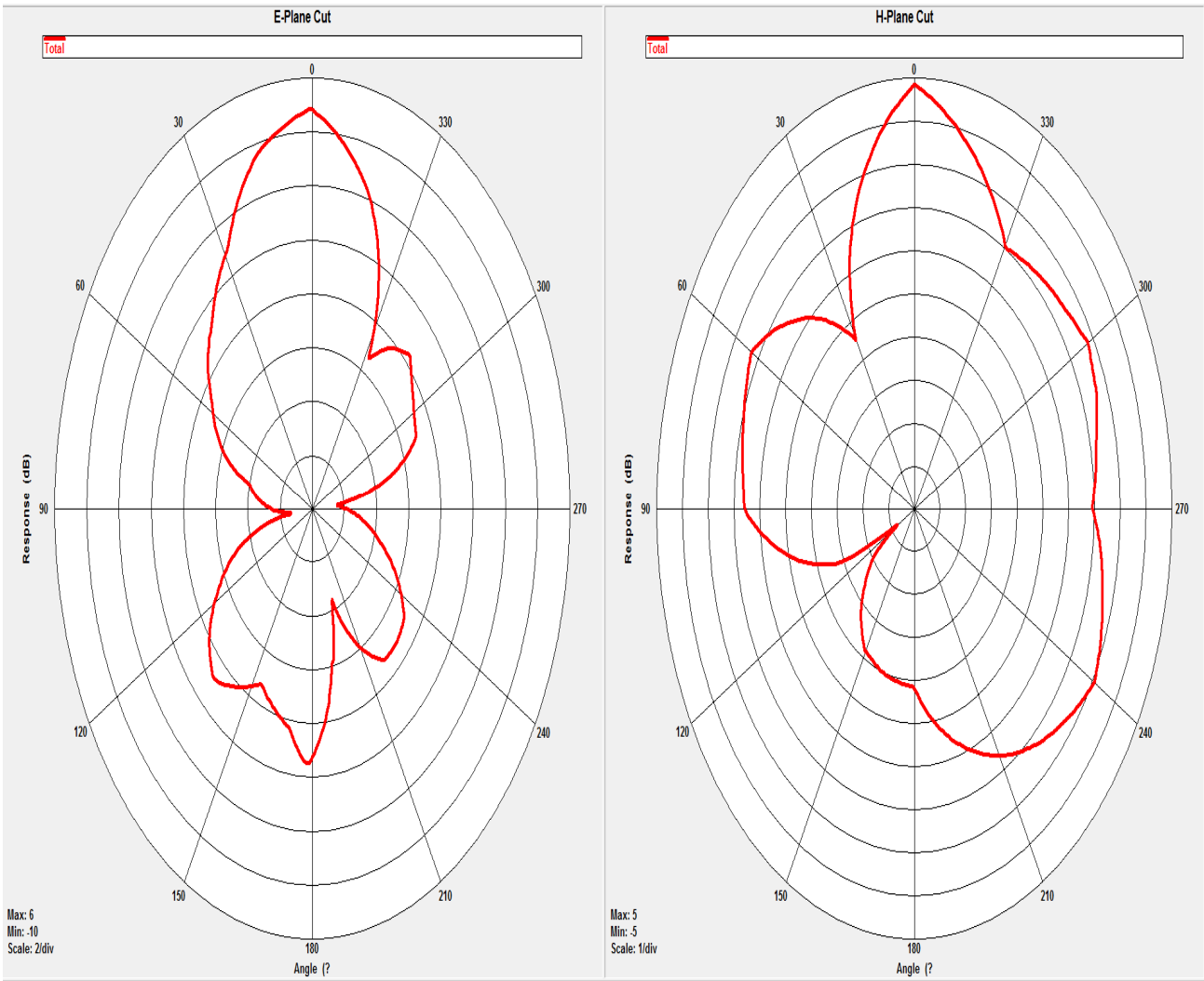
Frequency	Average Gain	Peak Gain	Efficiency
2400	-1.42	4.08	72.14
2450	-1.21	4.83	75.70
2500	-1.28	5.25	74.39
5150	-0.56	4.60	87.82
5250	-0.32	4.79	92.79
5350	-0.10	5.52	97.78
5470	-0.87	4.57	81.93
5600	-0.73	4.25	84.60
5725	-0.61	4.65	86.86
5785	-1.40	4.08	72.37
5850	-1.77	3.69	66.47

## 2400MHz 3D Radiation Pattern

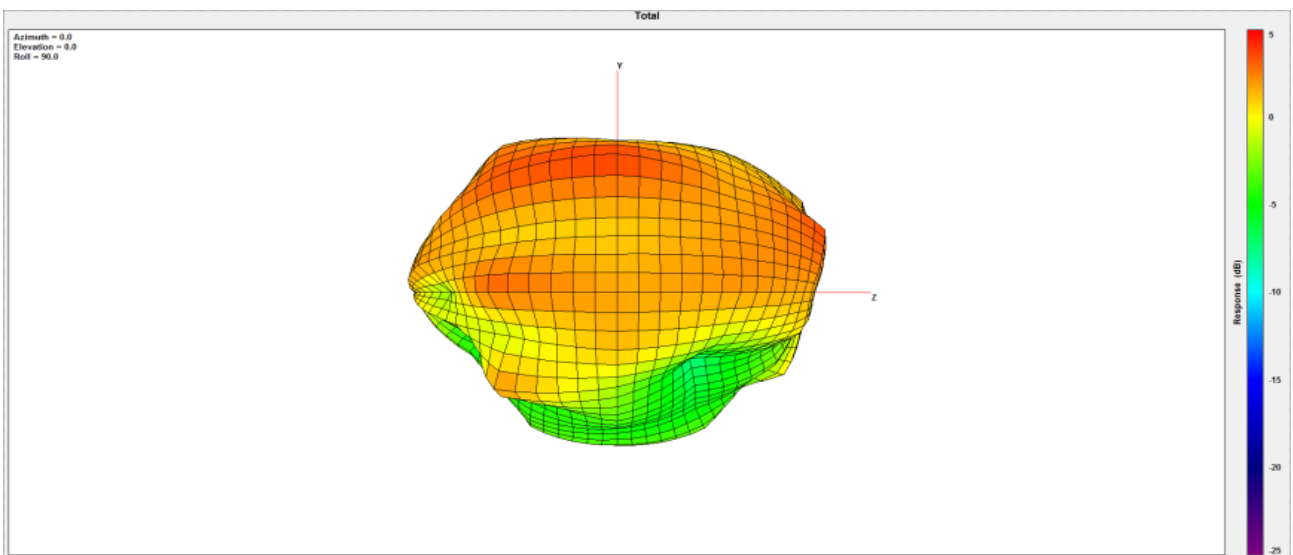
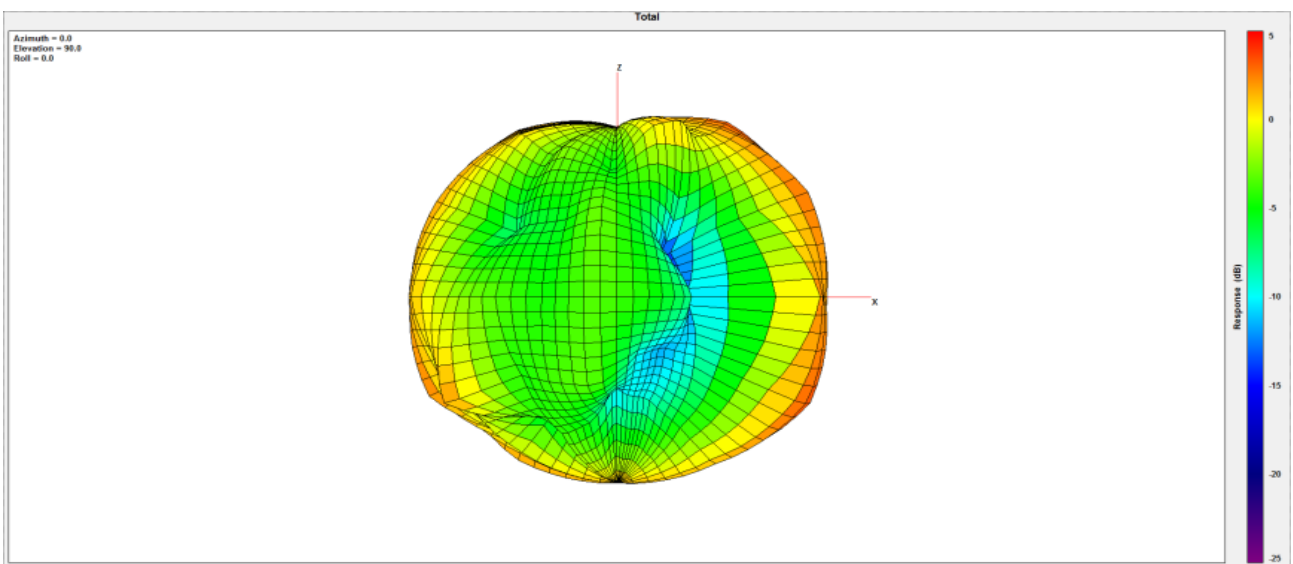
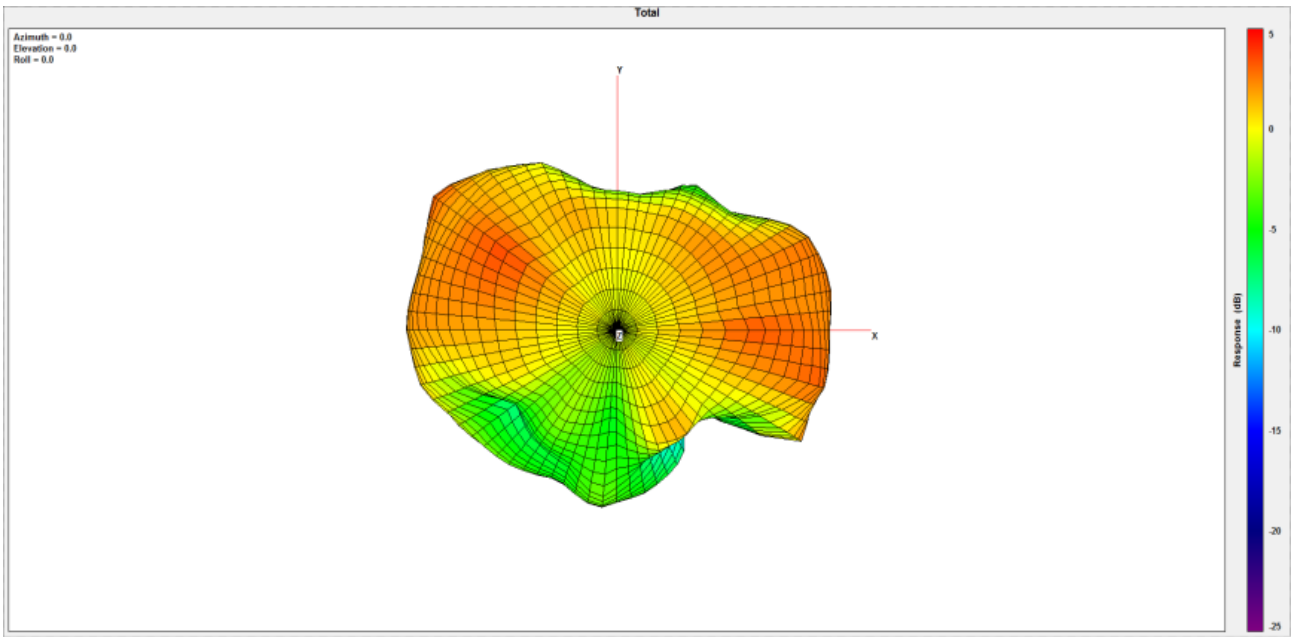




## 2400MHz 2D Radiation Pattern



# 5600MHz 3D Radiation Pattern



# 5600MHz 2D Radiation Pattern

